

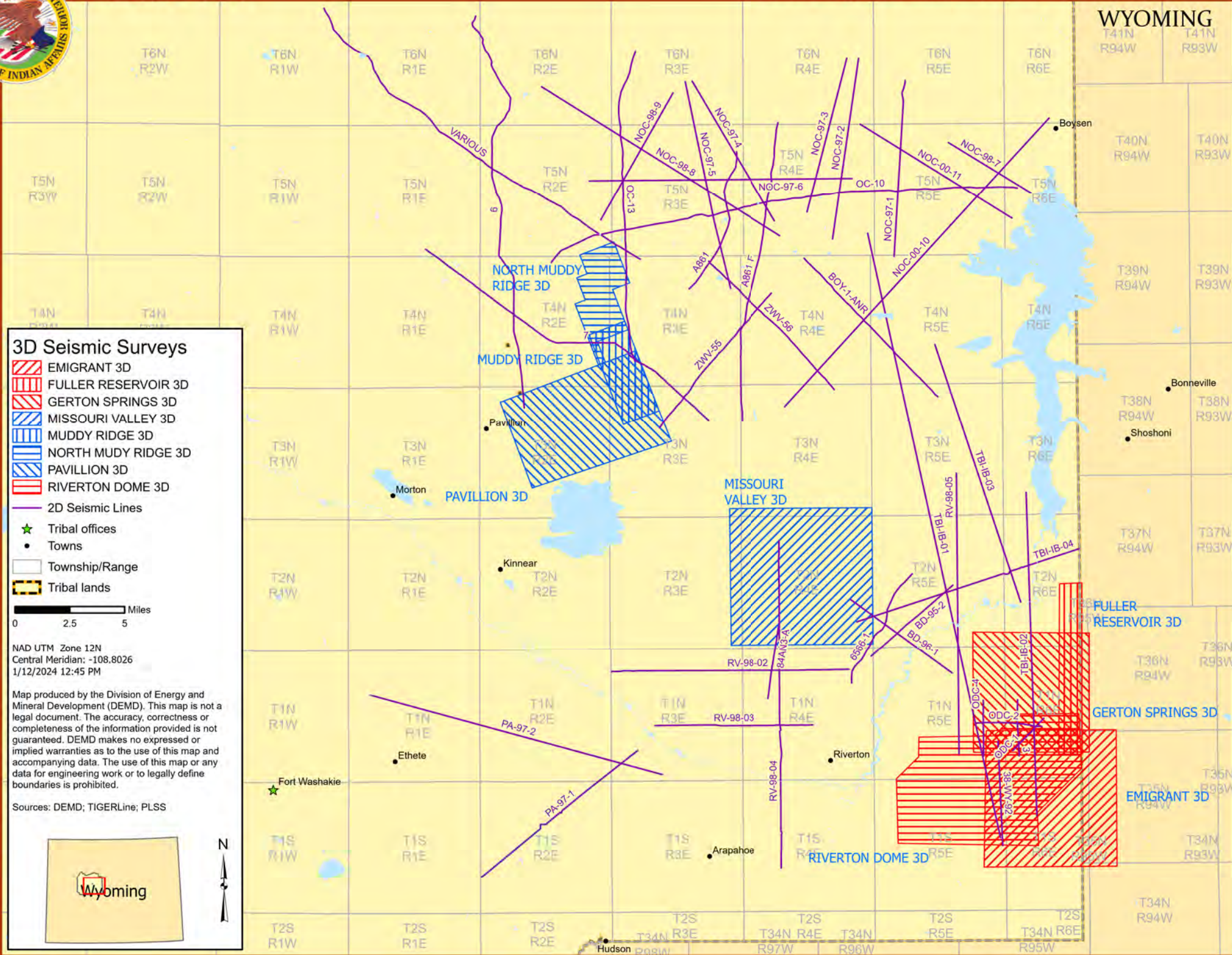


SEISMIC MAP

North Arapaho and Eastern Shoshone Tribes

WIND RIVER RESERVATION - EAST

WYOMING



3D Seismic Surveys

- EMIGRANT 3D
- FULLER RESERVOIR 3D
- GERTON SPRINGS 3D
- MISSOURI VALLEY 3D
- MUDDY RIDGE 3D
- NORTH MUDDY RIDGE 3D
- PAVILLION 3D
- RIVERTON DOME 3D

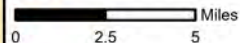
— 2D Seismic Lines

★ Tribal offices

• Towns

□ Township/Range

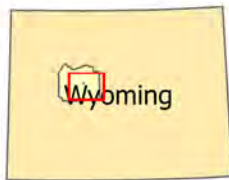
▨ Tribal lands



NAD UTM Zone 12N
 Central Meridian: -108.8026
 1/12/2024 12:45 PM

Map produced by the Division of Energy and Mineral Development (DEMD). This map is not a legal document. The accuracy, correctness or completeness of the information provided is not guaranteed. DEMD makes no expressed or implied warranties as to the use of this map and accompanying data. The use of this map or any data for engineering work or to legally define boundaries is prohibited.

Sources: DEMD; TIGERLine; PLSS



2D SEISMIC LINES

NAME	PROD	MILES	LOC	SHOT
3	SEC	2.56	T1N R6E	1974
6	F	19.27	T6N R2E	1978
7	F	15.49	T4N R2E	1979
8-25-70	F	18.87	T6N R1E	1970
38-WY-92	F	4.74	T1N R5E	1992
84AN3-A	S SEC	2.04	T1N R4E	
6566-1	F	5.91	T2N R5E	1972
A861	O	6.98	T5N R3E	
A861-F	F	13.81	T5N R4E	1973
BD-95-2	F, S, M	4.94	T2N R5E	1995
BD-96-1	F, S, M	5.72	T2N R5E	1995
BOY-1-ANR	F	8.78	T4N R4E	1975
NOC-00-10	F, S, M	17.85	T5N R5E	2000
NOC-00-11	F, S, M	8.14	T5N R5E	2000
NOC-97-1	F, M	8.08	T5N R5E	1997
NOC-97-2	F, S, M	8.34	T6N R4E	1997
NOC-97-3	F, M	7.25	T6N R4E	1997
NOC-97-4	F, S, M	7.42	T6N R3E	1997
NOC-97-5	F, S, M	9.67	T6N R3E	1997
NOC-97-6	F, S, M	12.00	T5N R3E	1997
NOC-98-7	F, M	4.42	T5N R5E	1998
NOC-98-8	F, S, M	12.84	T6N R2E	1998
NOC-98-9	F, S, M	6.67	T6N R3E	1998
OC-10	F	21.94	T5N R3E	1974
OC-13	F	14.34	T6N R3E	1974
ODC-1	O	2.05	T1N R6E	
ODC-2	SEC	2.99	T1N R5E	1974
ODC-4	SEC	2.54	T1N R5E	1974
PA-97-1	F, S, M	9.36	T1S R2E	1997
PA-97-2	F, S, M	13.77	T1N R2E	1997
RV-98-02	F, M	10.88	T1N R4E	1998
RV-98-03	F, M	7.24	T1N R4E	1998
RV-98-04	F, M	14.98	T1N R4E	1998
RV-98-05	F, M	12.81	T2N R5E	1998
TBI-IB-01	F, S, M	28.19	T4N R5E	2001
TBI-IB-02	F, S, M	14.74	T2N R6E	2001
TBI-IB-03	F, S, M	12.37	T4N R5E	2001
TBI-IB-04	F, S, M	10.72	T2N R5E	2001
ZWV-55	F	8.02	T4N R3E	
ZWV-56	F	8.21	T4N R3E	1983

3D SEISMIC SURVEYS

NAME	PROD	SQ MI	LOC	SHOT
EMIGRANT 3D	M	37.15	T1N R6E	
FULLER 3D	F	8.10	T1N R6E	
GERTON SPRINGS 3D	F	28.91	T1N R6E	1994
MISSOURI VALLEY 3D	F	40.40	T2N R4E	1994
MUDDY RIDGE 3D	F, M	7.65	T4N R2E	1993
NORTH MUDDY RIDGE 3	S, M	7.80	T4N R2E	2015
PAVILLION 3D	F, S	28.60	T4N R2E	1994
RIVERTON DOME 3D	O	38.39	T1N R6E	

UNMAPPED DATA

NAME	PROD	MILES	SHOT
3	F	9.00	1973
39-WY-92	F, S	4.40	1992
8-25-70	F	18.87	1970
A861-D	SEC	8.25	1973
A-872	SEC	14.56	1973
AHC-82-WRB-60	F	9.89	1982
E. RIVERTON DOME 3D	O		

