

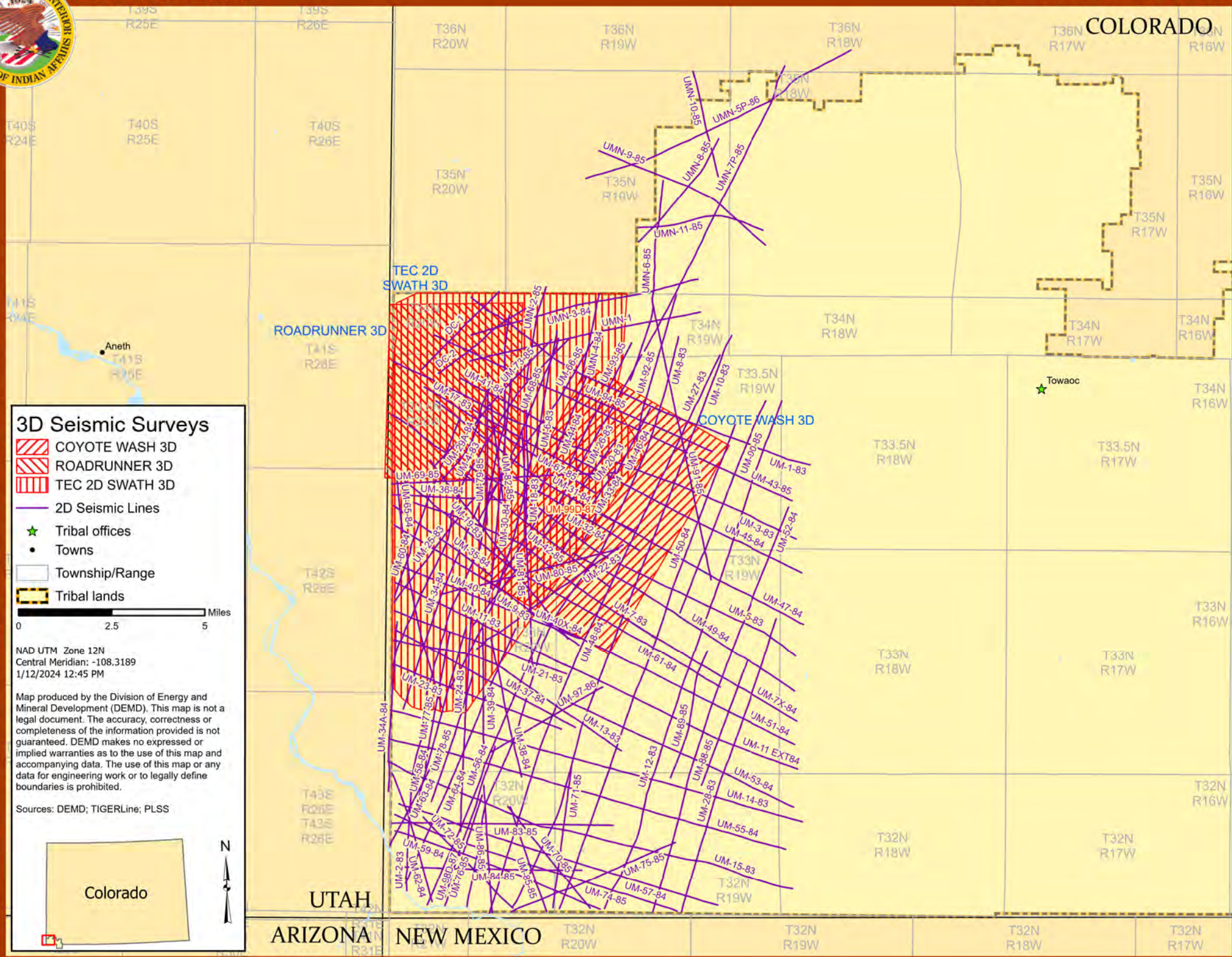


SEISMIC MAP

Ute Mountain Ute Tribe

COLORADO

UTE MOUNTAIN UTE RESERVATION - A



3D Seismic Surveys

- COYOTE WASH 3D
- ROADRUNNER 3D
- TEC 2D SWATH 3D
- 2D Seismic Lines
- Tribal offices
- Towns
- Township/Range
- Tribal lands

0 2.5 5 Miles

NAD UTM Zone 12N
Central Meridian: -108.3189
1/12/2024 12:45 PM

Map produced by the Division of Energy and Mineral Development (DEMD). This map is not a legal document. The accuracy, correctness or completeness of the information provided is not guaranteed. DEMD makes no expressed or implied warranties as to the use of this map and accompanying data. The use of this map or any data for engineering work or to legally define boundaries is prohibited.

Sources: DEMD; TIGERLine; PLSS

Colorado

UTAH

ARIZONA

NEW MEXICO

Towaoc

Aneth

TEC 2D SWATH 3D

ROADRUNNER 3D

COYOTE WASH 3D

2D SEISMIC LINES

NAME	PROD	MILES	LOC	SHOT	NAME	PROD	MILES	LOC	SHOT	NAME	PROD	MILES	LOC	SHOT
DC-1	S	2.94	T34N R20W	1986	UM-42-85	F	4.98	T33.5N R20W	1984	UM-88-85	F, S, M	3.58	T33N R19W	1985
DC-2	S	2.94	T34N R20W	1986	UM-43-85	F, S, M	10.62	T34N R20W	1984	UM-89-85	F, S, M	3.57	T33N R19W	1985
UM-1-83	F, S, M	10.26	T34N R20W	1983	UM-44-84	F	5.44	T34N R19W	1984	UM-90-85	F, S, M	6.14	T33.5N R19W	1985
UM-2-83	F	15.85	T34N R20W	1983	UM-45-84	F, S, M	6.85	T33.5N R19W	1984	UM-91-85	F, S, M	7.62	T34N R19W	1985
UM-3-83	F, S, M	11.87	T33.5N R20W	1983	UM-46-84	F	3.96	T33.5N R19W	1984	UM-92-85	F, S, M	4.24	T34N R19W	1985
UM-4-83	F, S, M	10.21	T34N R19W	1983	UM-47-84	F, S, M	6.54	T33.5N R19W	1984	UM-93-85	F	3.69	T34N R19W	1985
UM-5-83	F, S, M	12.68	T33.5N R20W	1983	UM-48-84	F, S, M	12.34	T33.5N R19W	1984	UM-94-85	F, S, M	4.38	T33.5N R20W	1985
UM-6-83	F	10.07	T34N R19W	1983	UM-49-84	F, S, M	7.03	T33N R19W	1984	UM-97-86	F, S, M	3.46	T33N R20W	1985
UM-7-83	F, S, M	7.50	T33.5N R20W	1983	UM-50-84	F, S, M	13.84	T33.5N R19W	1984	UM-98D-87	F	3.15	T32N R20W	1987
UM-8-83	F, S, M	16.48	T34N R19W	1983	UM-51-84	F, S, M	8.15	T33N R20W	1984	UM-99D-87	F	2.75	T33.5N R20W	1987
UM-9-83	F	5.93	T33.5N R20W	1983	UM-52-84	F, S, M	11.47	T33.5N R19W	1984	UMN-1	F, S, M	6.35	T34N R20W	1984
UM-10-83	F, S, M	16.48	T34N R19W	1983	UM-53-84	F, S, M	6.73	T33N R19W	1984	UMN-2-85	F	2.57	T34N R19W	1985
UM-11-83	F	5.13	T33N R20W	1983	UM-55-84	F, S, M	11.08	T33N R20W	1984	UMN-3-84	F, S, M	6.28	T34N R20W	1984
UM-11 EXT84	F, S, M	7.69	T33N R20W	1984	UM-56-84	F, S, M	7.96	T33N R20W	1984	UMN-4-84	F	2.37	T34N R19W	1984
UM-12-83	F, S, M	14.47	T33.5N R19W	1983	UM-57-84	F, S, M	8.99	T32N R20W	1984	UMN-5P-86	F, S, M	7.98	T35N R19W	1986
UM-13-83	F, S, M	6.92	T33N R20W	1983	UM-58-84	F, S, M	4.98	T33N R20W	1984	UMN-6-85	F, S, M	5.47	T34N R19W	1985
UM-14-83	F, S, M	11.47	T33N R20W	1983	UM-59-84	F, S, M	5.90	T32N R20W	1984	UMN-7P-85	F, S, M	8.56	T34N R19W	1985
UM-15-83	F, S, M	11.47	T33N R20W	1983	UM-60-84	F	5.15	T33.5N R20W	1984	UMN-8-85	F, S, M	3.54	T35N R19W	1985
UM-17-83	F	5.43	T33.5N R20W	1983	UM-61-84	F, S, M	10.57	T33.5N R20W	1984	UMN-9-85	F, S, M	5.22	T35N R19W	1985
UM-18-83	F	3.69	T33.5N R20W	1983	UM-62-84	F, S, M	3.62	T33N R20W	1984	UMN-10-85	F, S, M	2.91	T35N R19W	1985
UM-19-83	F	6.05	T33.5N R20W	1983	UM-63-84	F, S, M	2.81	T33N R20W	1984	UMN-11-85	F, S, M	3.46	T35N R19W	1985
UM-20-83	F	6.29	T33.5N R20W	1983	UM-64-84	F, S, M	7.46	T33N R20W	1984					
UM-21-83	F	4.93	T33N R20W	1983	UM-65-84	F	6.41	T33.5N R20W	1984					
UM-22-83	F	4.83	T33.5N R19W	1983	UM-66-85	F	5.25	T34N R19W	1985					
UM-23-83	F	4.82	T33N R20W	1983	UM-67-85	F	4.41	T33.5N R20W	1985					
UM-24-83	F, S, M	6.54	T33N R20W	1983	UM-68-85	F	5.34	T34N R19W	1985					
UM-25-83	F, S, M	4.11	T33.5N R20W	1983	UM-69-85	F	6.01	T33.5N R20W	1985					
UM-26-83	F	5.43	T34N R19W	1983	UM-70-85	F, S, M	3.52	T32N R20W	1985					
UM-27-83	F, S, M	4.64	T34N R19W	1983	UM-71-85	F, S, M	3.81	T33N R19W	1985					
UM-28-83	F, S, M	8.29	T33N R19W	1983	UM-72-85	F, S, M	3.44	T32N R20W	1985					
UM-29A-84	F	3.10	T33.5N R20W	1984	UM-73-85	F	4.67	T34N R19W	1985					
UM-30-84	F	6.10	T33.5N R20W	1984	UM-74-85	F, S, M	8.03	T32N R20W	1985					
UM-31-84	F	6.40	T33.5N R20W	1984	UM-75-85	F, S, M	4.78	T32N R20W	1985					
UM-32-84	F	4.26	T33.5N R20W	1984	UM-76-85	F, S, M	4.27	T33N R20W	1985					
UM-33-84	F	2.73	T33.5N R19W	1984	UM-77-85	F, S, M	3.69	T33N R20W	1985					
UM-34-84	F	6.02	T33.5N R20W	1984	UM-78-85	F, S, M	3.55	T33N R20W	1985					
UM-34A-84	F	4.56	T33N R20W	1984	UM-79-85	F	4.07	T33.5N R20W	1985					
UM-35-84	F	3.26	T33.5N R20W	1984	UM-7X-84	F, S, M	5.15	T33N R19W	1984					
UM-36-84	F	3.23	T33.5N R20W	1984	UM-80-85	F	4.89	T33N R20W	1985					
UM-37-84	F, S, M	5.52	T33N R20W	1984	UM-81-85	F	6.38	T33.5N R20W	1985					
UM-38-84	F, S, M	3.78	T33N R20W	1984	UM-82-85	F	2.64	T33.5N R20W	1985					
UM-39-84	F	3.12	T33N R20W	1984	UM-83-85	F, S, M	5.94	T32N R20W	1985					
UM-40-84	F	2.93	T33N R20W	1984	UM-84-85	F, S, M	4.75	T32N R20W	1985					
UM-40X-84	F	3.00	T33N R20W	1984	UM-85-85	F, S, M	2.99	T32N R20W	1985					
UM-41-84	F	3.53	T33.5N R20W	1984	UM-86-85	F, S, M	3.44	T32N R20W	1985					

3D SEISMIC SURVEYS

NAME	PROD	SQ MI	LOC	SHOT
COYOTE WASH 3D	F, S, M	27.05	T33.5N R20W	2004
ROADRUNNER 3D	F, S, M	16.85	T33.5N R20W	2004
TEC 2D SWATH 3D	F, S, M	56.84	T33.5N R20W	1991/2007

