



# SEISMIC MAP

OsageNation

OSAGE RESERVATION - B

## 3D Seismic Surveys

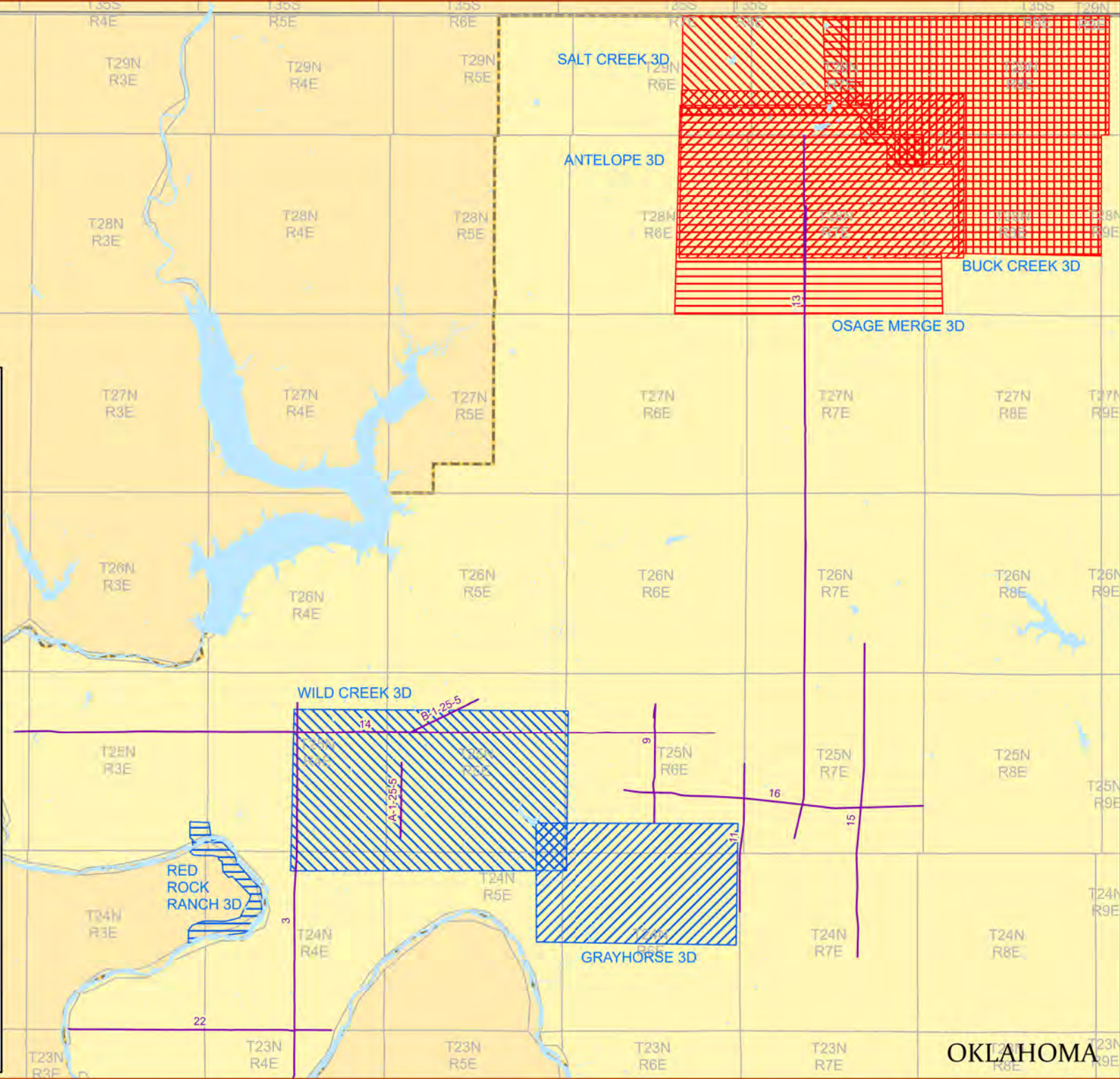
- ANTELOPE 3D
- BUCK CREEK 3D
- GRAYHORSE 3D
- OSAGE MERGE 3D
- RED ROCK RANCH 3D
- SALT CREEK 3D
- WILDCREEK 3D
- 2D Seismic Lines
- Towns
- Township/Range
- Tribal lands

0 1.25 2.5 5 Miles

NAD UTM Zone 12N  
Central Meridian: -96.5250  
1/16/2024 4:36 PM

Map produced by the Division of Energy and Mineral Development (DEMD). This map is not a legal document. The accuracy, correctness or completeness of the information provided is not guaranteed. DEMD makes no expressed or implied warranties as to the use of this map and accompanying data. The use of this map or any data for engineering work or to legally define boundaries is prohibited.

Sources: DEMD; TIGERLine; PLSS



OKLAHOMA

## 2D SEISMIC LINES

NAME	PROD	MILES	LOC	SHOT
3	S	13.81	T24N R4E	1986
9	S	4.98	T25N R6E	1986
11	S	5.03	T25N R6E	1986
13	S	33.73	T25N R7E	1986
14	S	23.82	T25N R3E	1986
15	S	12.24	T25N R7E	1986
16	S	10.18	T25N R6E	1986
22	S	8.93	T24N R4E	1986
A-1-25-5	F	2.55	T25N R4E	1991
B-1-25-5	F	2.54	T25N R4E	1991

## 3D SEISMIC SURVEYS

NAME	PROD	SQ MI	LOC	SHOT
ANTELOPE 3D	F, M	54.52	T28N R7E	1997
BUCK CREEK 3D	F, M	56.24	T29N R8E	
GRAYHORSE 3D	M	28.03	T25N R5E	1997
OSAGE MERGE 3D	P	116.86	T29N R5E	2014
RED ROCK RANCH 3D	F, S, M, E	3.27	T25N R3E	6/2011
SALT CREEK 3D	F, S, M, E	21.73	T28N R7E	2012
WILDCREEK 3D	F, M	51.36	T25N R5E	1997

