

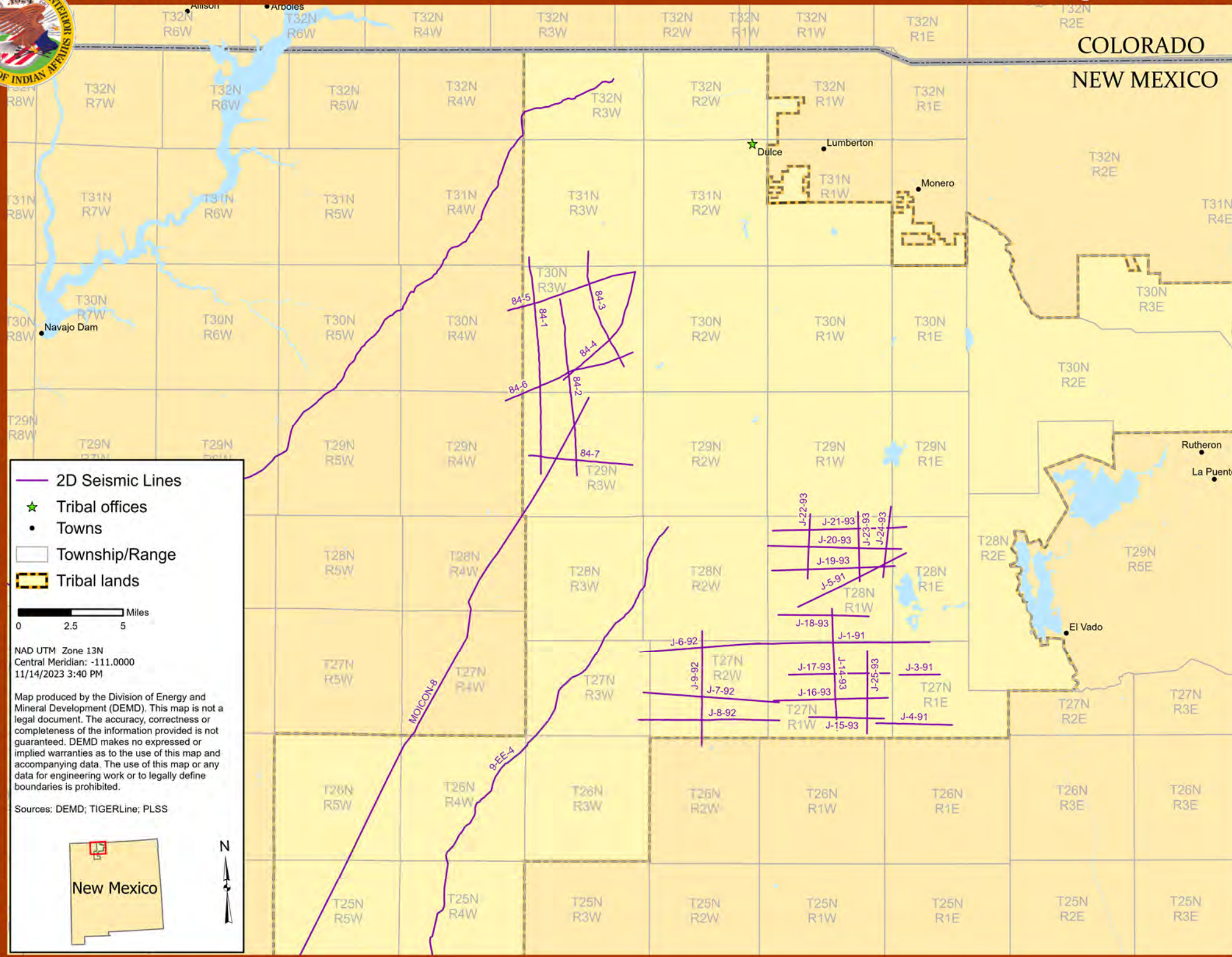


SEISMIC MAP

Jicarilla Apache Nation

JICARILLA RESERVATION - NORTH

COLORADO
NEW MEXICO



- 2D Seismic Lines
- Tribal offices
- Towns
- Township/Range
- Tribal lands

0 2.5 5 Miles

NAD UTM Zone 13N
Central Meridian: -111.0000
11/14/2023 3:40 PM

Map produced by the Division of Energy and Mineral Development (DEMD). This map is not a legal document. The accuracy, correctness or completeness of the information provided is not guaranteed. DEMD makes no expressed or implied warranties as to the use of this map and accompanying data. The use of this map or any data for engineering work or to legally define boundaries is prohibited.

Sources: DEMD; TIGERLine; PLSS

New Mexico

2D SEISMIC LINES

NAME	PROD	MILES	LOC	SHOT
9-EE-3	F, S	95.23	T32N R3W	1969
9-EE-4	F, S	77.93	T28N R2W	1969
84-1	S, M	10.41	T31N R3W	1984
84-2	S, M	8.51	T30N R3W	1984
84-3	S, M	5.89	T31N R3W	1984
84-4	S, M	6.46	T30N R3W	1984
84-5	S, M	6.39	T30N R3W	1984
84-6	S, M	6.56	T30N R3W	1984
84-7	S, M	4.99	T29N R3W	1984
J-1-91	F, S, M, G	8.69	T27N R1E	1991
J-3-91	F, S, M, G	1.96	T27N R1E	1991
J-4-91	F, S, M	3.65	T27N R1E	1991
J-5-91	F, S, M, G	5.79	T28N R1E	1991
J-6-92	F, M	5.78	T27N R2W	1992
J-7-92	F, S, M	7.22	T27N R1W	1992
J-8-92	F, S, M	6.78	T27N R1W	1992
J-9-92	F, S, M	5.67	T28N R2W	1992
J-14-93	F, S, M	5.83	T28N R1W	1994
J-15-93	F, M	3.59	T27N R1W	1994
J-16-93	F, M	5.48	T27N R1W	1994
J-17-93	F, M	4.83	T27N R1W	1994
J-18-93	F, M	4.33	T28N R1W	1994
J-19-93	F, M	5.88	T28N R1E	1993
J-20-93	F, M	6.39	T28N R1E	1993
J-21-93	F, M	6.42	T28N R1E	1993
J-22-93	F, M	3.09	T29N R1W	1994
J-23-93	F, M	3.32	T29N R1W	1994
J-24-93	F, M	3.40	T29N R1W	1993
J-25-93	F, S, M	3.96	T7N R1W	1993
MOICON-8	F, M	39.00	T29N R3W	1996

