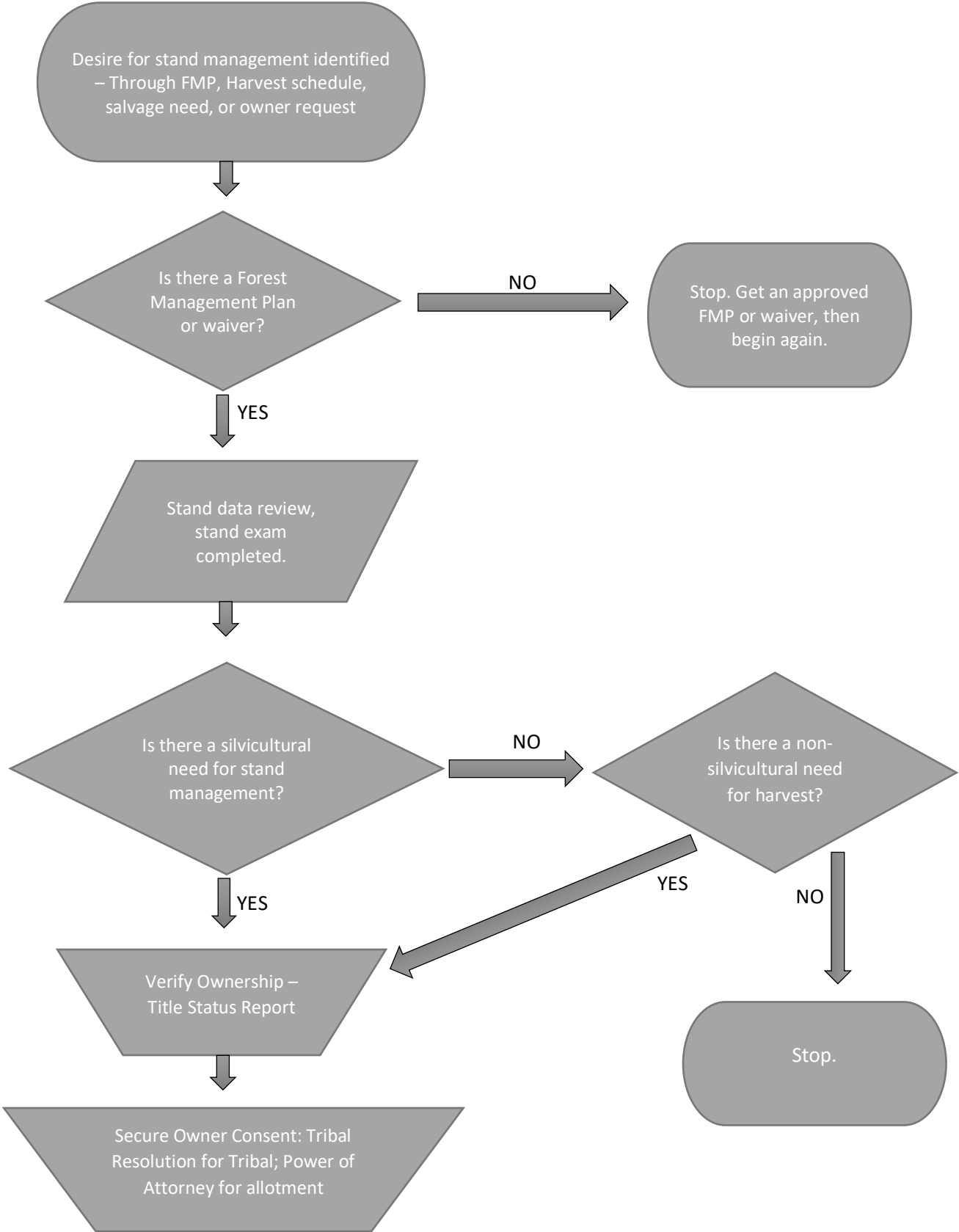
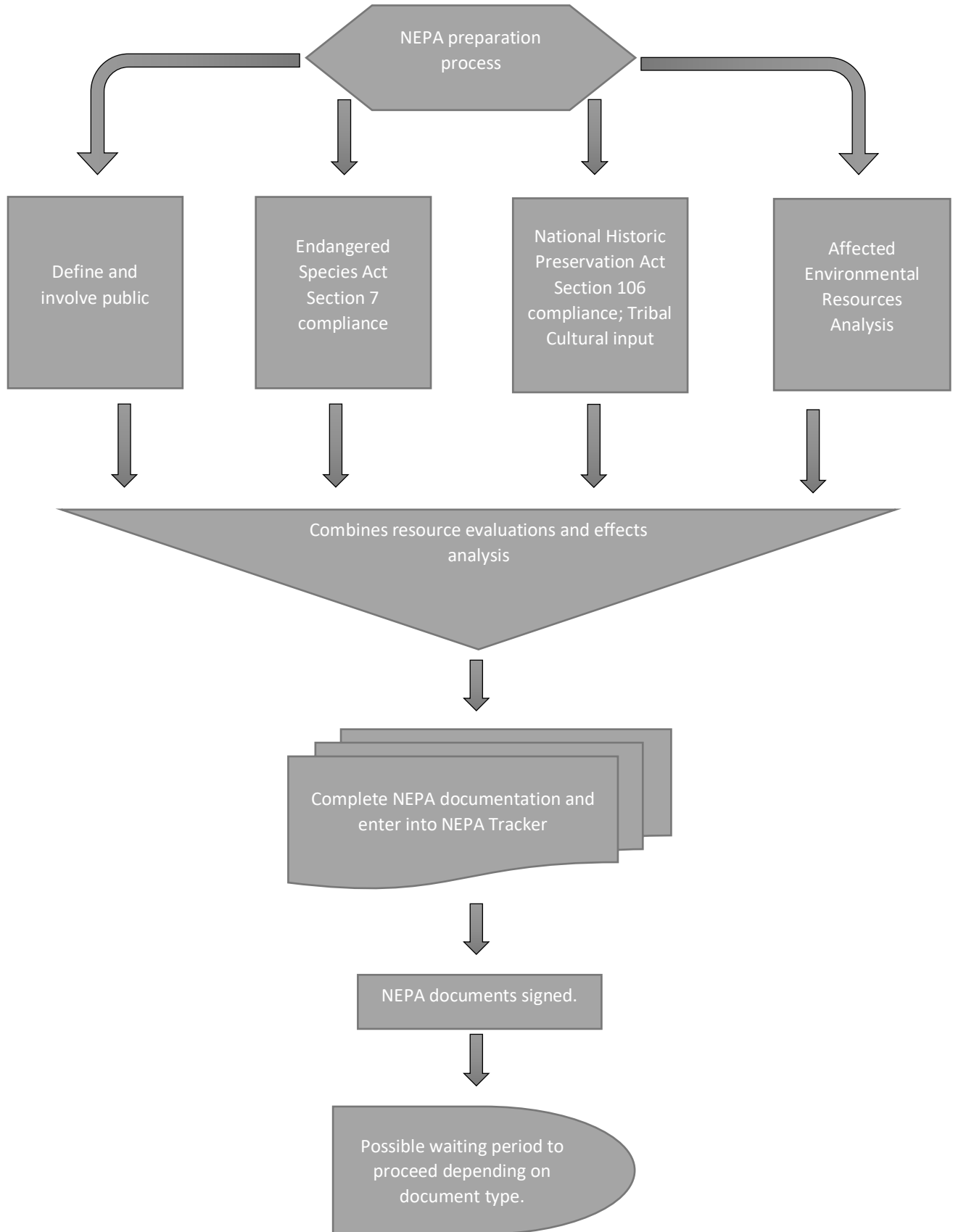


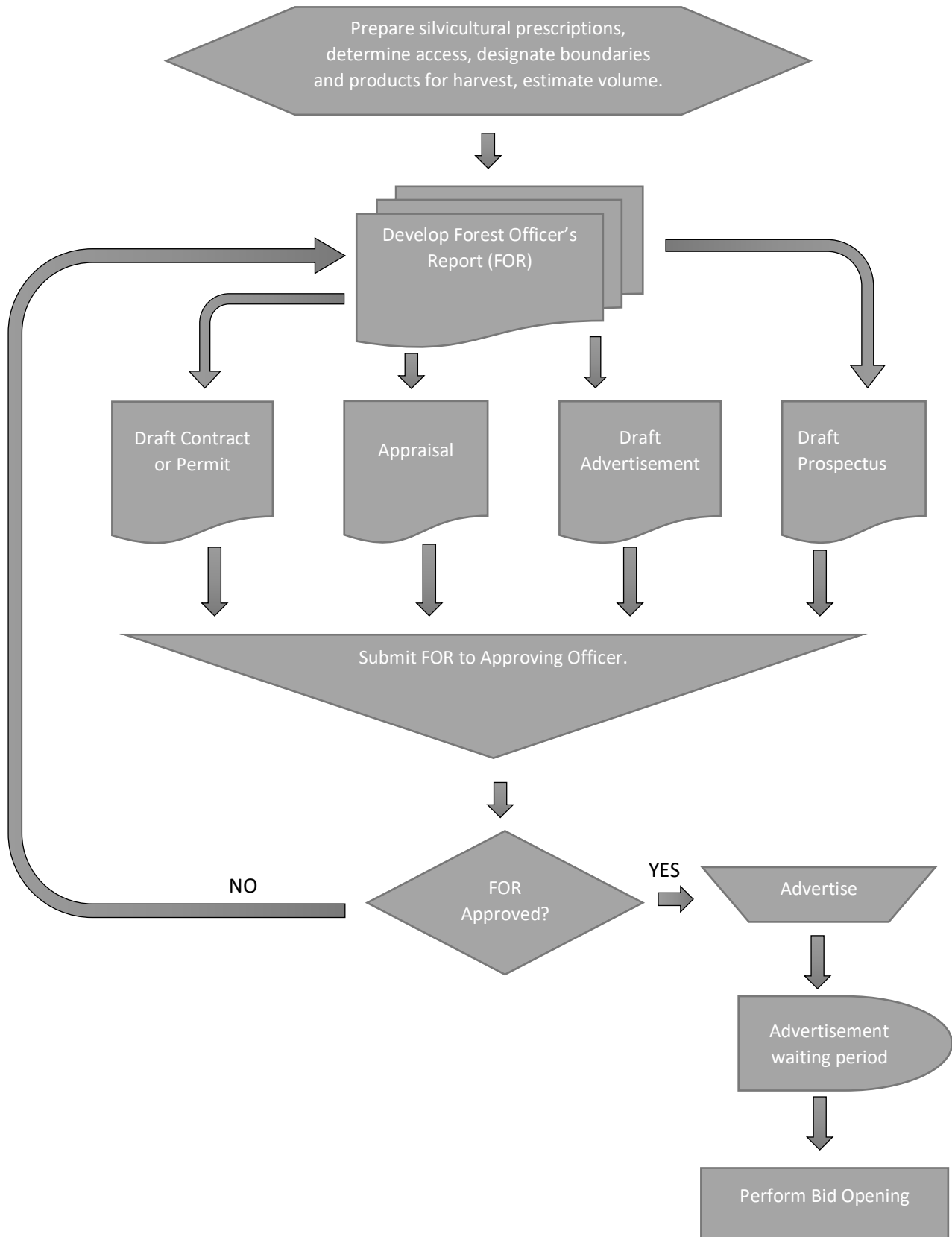
**Timber Sale Process  
(Identify need for management)**



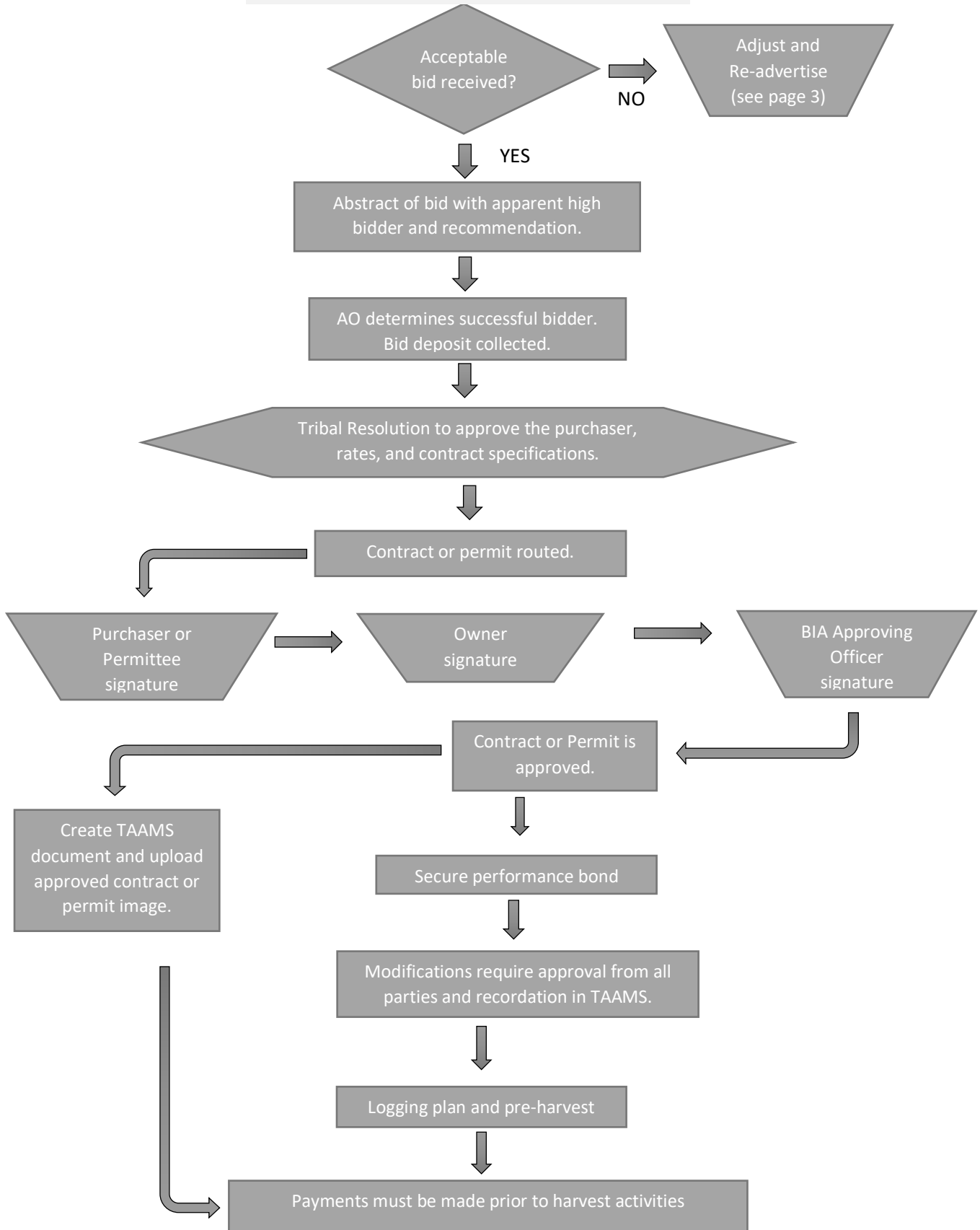
**Timber Sale Process  
(Environmental Compliance)**



## Timber Sale Process (Preparation to Bid Opening)



**Timber Sale Process  
(Bid opening and administrative actions)**



# Timber Sale Process (Harvesting)

Invoice for advance payments, advance deposits, installment payment or full payment. Payments received prior to harvest operations.

Harvest of forest products.

Scaling is performed, scale is entered into TAAMS.

Scale report and Report of Timber Cut are generated.

Funds are applied and distributed to owners and other accounts through TAAMS.

Are there enough funds to pay for the remainder of the forest products to be harvested?

NO

YES

TAAMS invoicing for payments continues to ensure adequate funds prior to harvest.

Is the harvest complete and all other contract obligations satisfied?

YES

NO

Harvesting is completed.

**Timber Sale Process  
(Closure of contract or permit)**

