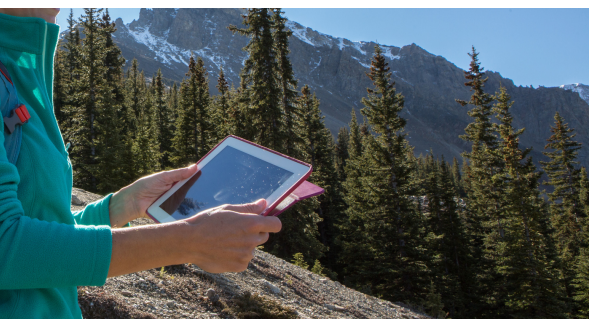


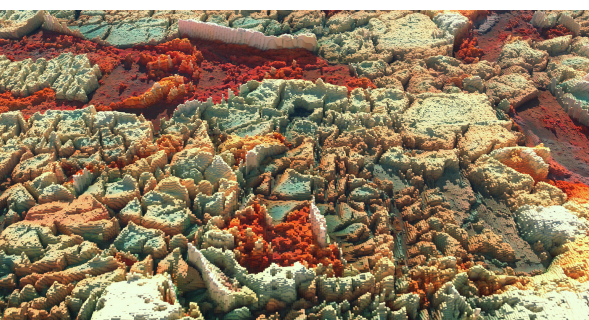
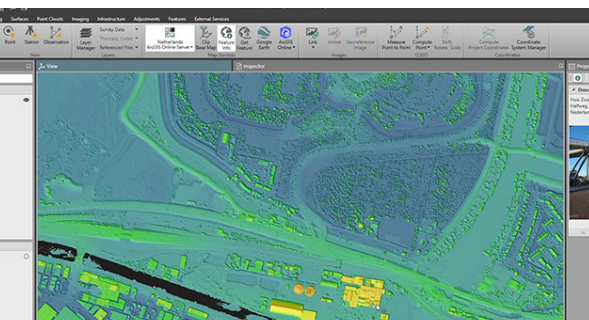
U.S. BUREAU OF INDIAN AFFAIRS

PAID INTERNSHIPS

GEOSPATIAL SUPPORT



**PROTECT NATIVE-OWNED LANDS
AND HELP TRIBES UTILIZE
THEIR NATURAL RESOURCES**



The Branch of Geospatial Support provides The Bureau of Indian Affairs and all federally recognized Tribes with Geographic Information Systems (GIS) services, training, and support. By utilizing GIS systems, Tribes can map and manage their cultural and natural resources and contribute to critical datasets that benefit Indian Country. We use GIS applications like ArcGIS, XTools, Avenza Maps Pro, and DigitalGlobe to support land management programs. Pathways Trainees can take advantage of the following:

- **Full-Time or Part-Time** positions available every Fall, Spring, and Summer (*Remote options available*)
- **Fully paid** with accrued sick leave and time off
- **Tuition Assistance and Scholarships**
- **Opportunity to automatically convert to a full-time position after graduation**

APPLY ON [USAJOBS.GOV](https://www.usajobs.gov)

For more information:



OTSPathways@bia.gov



www.bia.gov/bia/ots



PATHWAYS PROGRAM INTERNSHIPS

GEOSPATIAL SUPPORT



PROGRAM REQUIREMENTS

Pathways Internship Program Participants must:

- Be at least 18 years old
- Be accepted or enrolled in an accredited college, university, or technical school; Tribal College and University (TCU) students are highly encouraged to apply!
- Maintain part-time or full-time student status (i.e. you must take at least 6 credit hours every semester/term)
- Must have and maintain a cumulative GPA of 2.0 or higher

Some positions require:

- Ability to obtain and maintain a security clearance
- Medical exam, Drug Testing
- Driver's License

CAREER PATH EXAMPLES

- Geographic Information System Specialist
- Natural Resources Specialist
- Program Analyst
- Data Analyst
- GIS Coordinator
- Cartographer
- Geographer
- Interactive/UX Designer
- Data Management Support Specialist

PRIORITY DEGREE FIELDS

- Geographic Information Systems (GIS)
- GIS Systems Management
- Geomatics
- Land Surveying
- Geology
- Cartography
- Natural Resource Management
- Computer Science
- Environmental Science