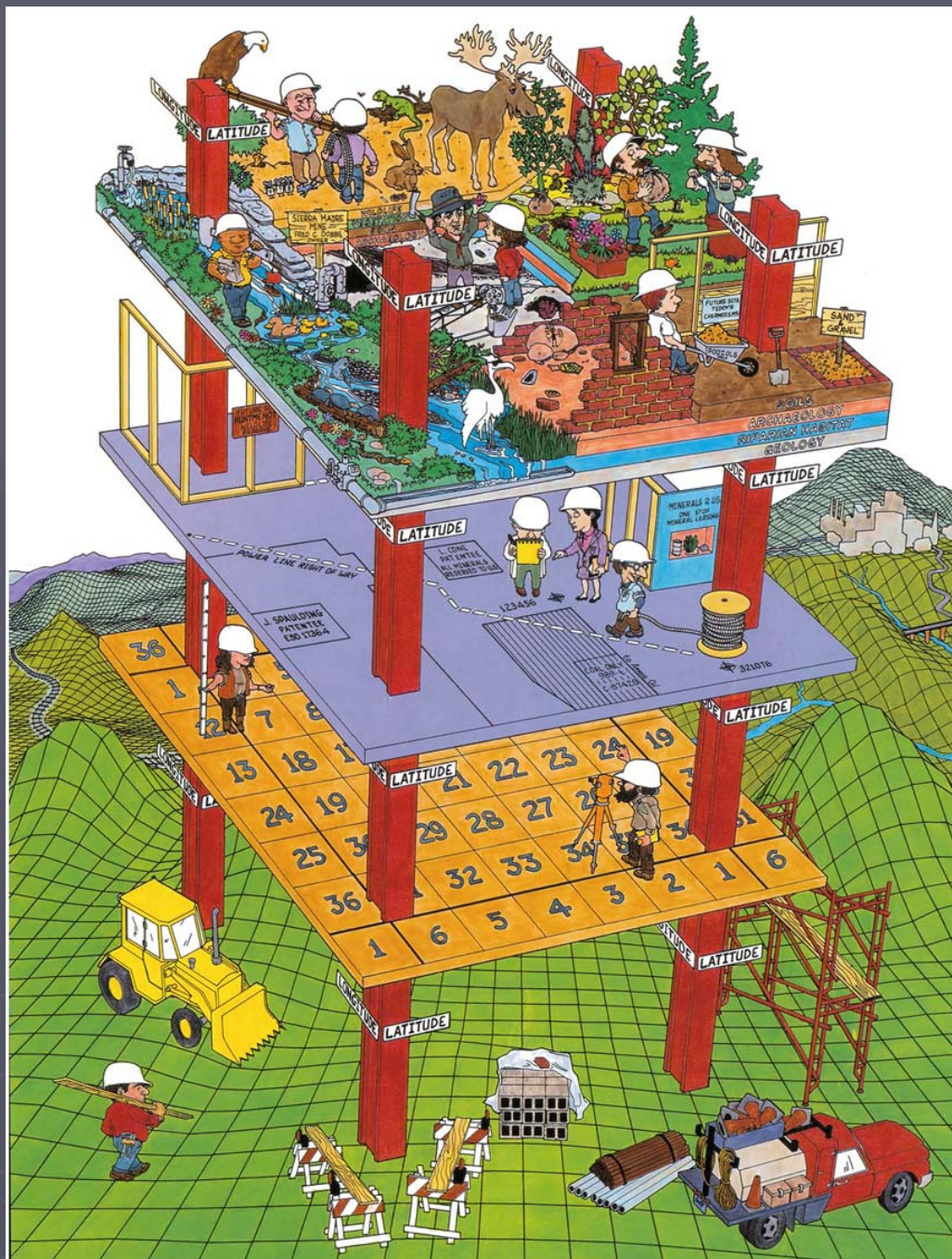




BIA Midwest GIS Round Table Discussion



Topics of Discussion

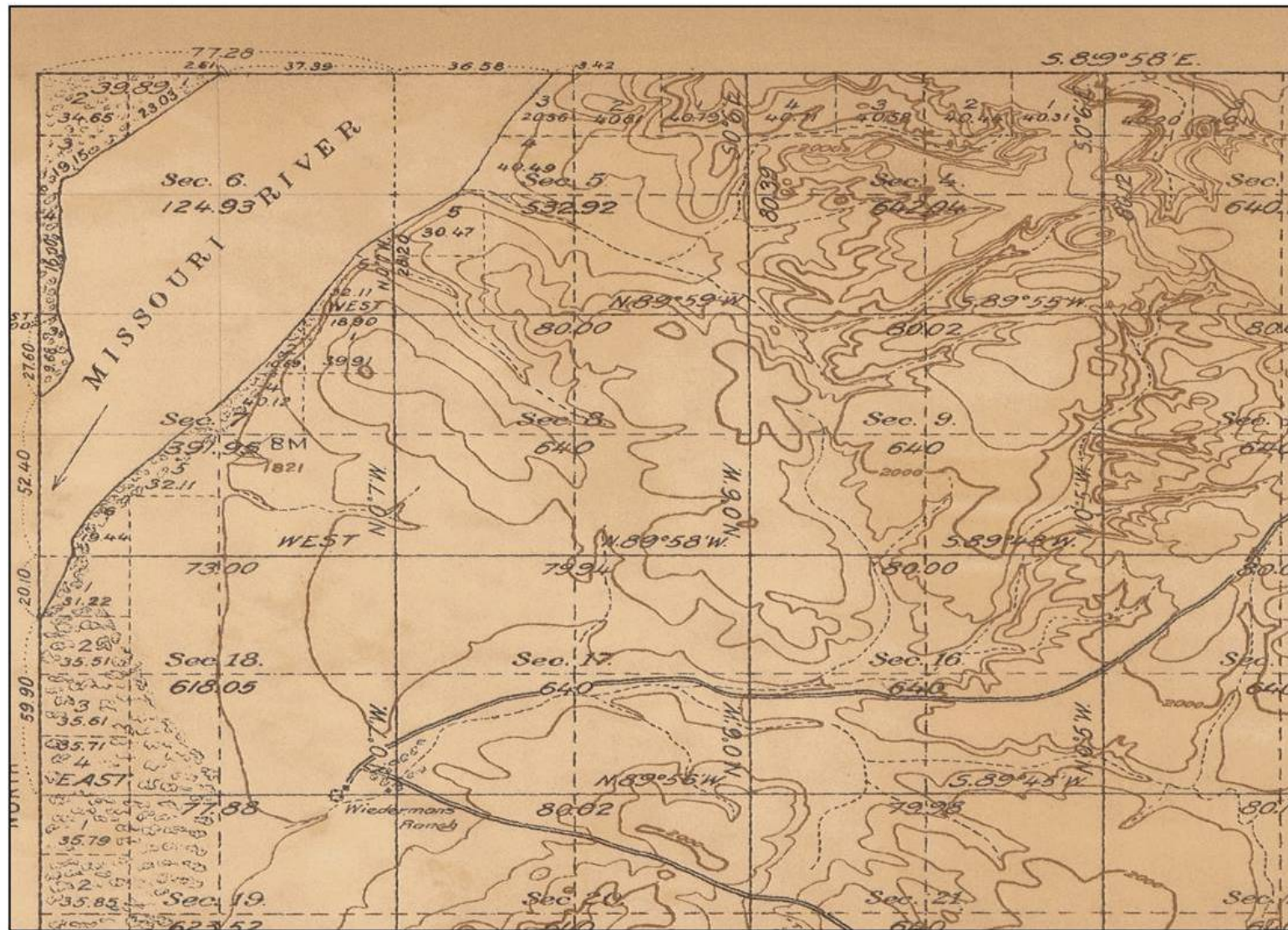
- ▶ What does BIA Nationally have for GIS information?
- ▶ What does Midwest have for GIS Information?
- ▶ What are Midwest's goals for GIS?
- ▶ What do Tribes have for GIS Information?
- ▶ What are Tribe's goals for GIS Information?
- ▶ How do we move forward to share data?

GIS at BIA National level

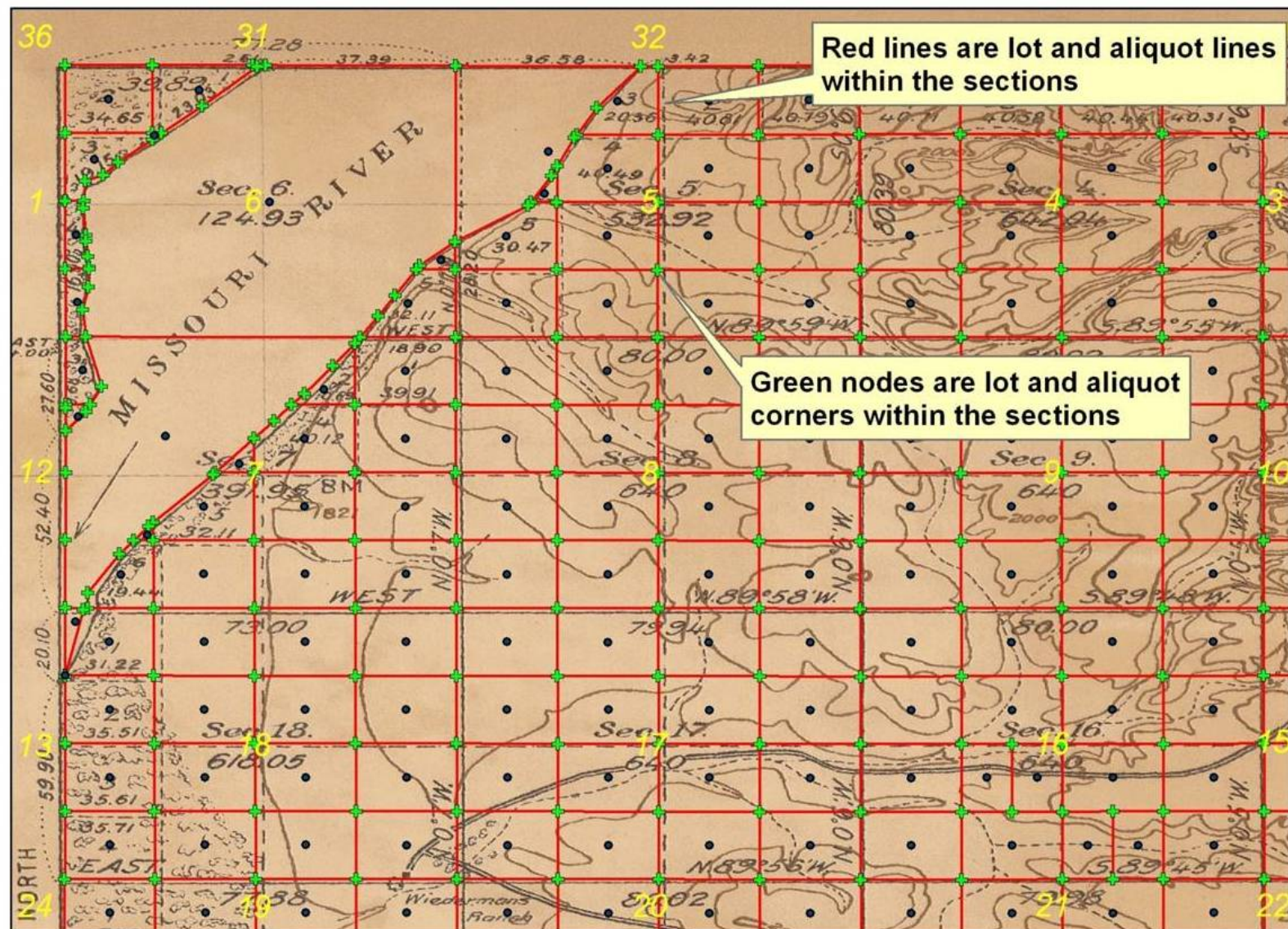
► Branch of Geospatial Support

- Under Division of the Land Titles and Records.
- Provides Software, Training, & Support.
- GCDB Mapping from Buy Back Program.
- Efforts begun to graphically represent TAAAM Parcel Information from Buy Back Mapping.
- Planned maintenance of data.
- Currently no GIS shared layers or data.

General Land Office Plat for T. 151 N., R. 93 W., 5th PM



BLM'S Geographic Coordinate Database (GCDB)



GIS at BIA Midwest Region

- ▶ Wide array of levels of information
 - ▶ GeoDB, GCDB, Digitized
 - ▶ Have LTM04 and LTM07 for Tribes
 - ▶ Very few updates to parcel layers since 2007
 - ▶ Currently no web based app to view GIS data.
 - ▶ Currently no filled GIS positions in Region.

GeoDB Schema

► Admin

- CTY4, QUAD3, INDEX, OAM4, SBD4, LDB4, & GEO1

► OWN

- PLS4, RBD4, LMT4, LTM7, LSTR4, & TWP4

► CULTRES

- ARC1, ARC4, & BLG1

GeoDC Schema

- ▶ HYDRO

- ▶ SPT1, STR2, STR4, LAK4, & NWI1

- ▶ LANDCOVER

- ▶ SCT4, LCT4, SLS4, & OGI4

- ▶ TRANS

- ▶ RDS2, RRS2, & UTL2

- ▶ TOPO

- ▶ STAS

Midwest GIS Goals

- ▶ Have a web based platform where program can edit own layer but view all
- ▶ Have data agree and match tribes information
- ▶ Create and implement plan for maintenance, new trust parcels, leases, and ROW as recorded in TAAMS.
- ▶ Fill Staffing to meet demands and maintenance

Result from Survey

- ▶ 18 Respondents
- ▶ Number of Staff utilizing GIS Information
 - Range from 2 -10 staff but most have other programs and Departments utilizing data

Response for Types of Data

- ▶ Parcel data
- ▶ Land use/cover
- ▶ Forestry
- ▶ Housing/Facilities
- ▶ Utilities
- ▶ Leases
- ▶ Survey Information
- ▶ Roads
- ▶ Hydrology
- ▶ U.S. Census Data
- ▶ Enrollment
- ▶ Habitat
- ▶ Soils
- ▶ Cultural Sites/Arc.

Willingness to Share Data

- ▶ 1 - Yes
- ▶ 4 - I think so / Potentially
- ▶ 11 - Limited or General Information - Depends on Sensitivity of Data
- ▶ 2 - No

Willingness to Fund / Collaborate

- ▶ 1 - Yes Aerial Photography
- ▶ 1 - Aerial Photography agreement w/ County
- ▶ 1 - Yes to co-write grant proposals
- ▶ 7 - Uncertain/Maybe/Unkown
- ▶ 4 - Depends on Type of Data collected
- ▶ 3 – No/No resources to fund Project

Interest in Demonstrating Need for GIS

- ▶ 5 – Very Interested
- ▶ 8 – Somewhat Interested
- ▶ 3 – Not Interested

What are Tribes doing & any goals ??

Round Table discussion



How can we organize sharing and communication?

- ▶ Formation of Midwest GIS users Group
 - ▶ Definition & Standardation of Layers and data
 - ▶ Prioritize Layers and information
 - ▶ Sharing site
 - ▶ Message board
 - ▶ Annual or Semi-Annual Meeting/Conference
 - ▶ \$\$\$
 - ▶ Training @ MWRO from BIA Geospatial Services
 - ▶ Legislative or Policy Actions

GLO Records www.glorerecords.blm.gov

