



United States Department of the Interior

BUREAU OF INDIAN AFFAIRS
Great Plains Regional Office
115 Fourth Avenue S.E., Suite 400
Aberdeen, South Dakota 57401



IN REPLY REFER TO:
DESCRM
MC-208

NOV 01 2011

MEMORANDUM

TO: Superintendent, Fort Berthold Agency

FROM: Acting Regional Director, Great Plains Region

SUBJECT: Environmental Assessment Addendum and Finding of No Significant Impact

In compliance with the regulations of the National Environmental Policy Act (NEPA) of 1969, as amended, an Addendum has been completed and a Finding of No Significant Impact (FONSI) has been issued. The addendum authorizes land use for gathering pipelines connecting the Skunk Creek #23-14C well to the Arrow Two Shields Butte #2-24-12H/Skunk Creek #2-24-25H gathering pipeline system on the Fort Berthold Indian Reservation.

All the necessary requirements of the National Environmental Policy Act have been completed. Attached for your files is a copy of the EA Addendum, FONSI and Notice of Availability. The Council on Environmental Quality (CEQ) regulations require that there be a public notice of availability of the FONSI (40 C.F.R. Part 1506.6(b)). Please post the attached notice of availability at the Agency and Tribal buildings for 30 days.

If you have any questions, please call Marilyn Bercier, Regional Environmental Scientist, Division of Environment, Safety and Cultural Resources Management, at (605) 226-7656.

Attachment

cc: Tex Hall, Chairman, Three Affiliated Tribes (with attachment)
Elgin Crows Breast, Tribal Historic Preservation Officer (with attachment)
Derek Enderud, BLM, Bureau of Land Management (with attachment)
Michael Madson, SWCA (with attachment)
Jonathon Shelman, Corps of Engineers (with attachment)
Jeff Hunt, Fort Berthold Agency

**Finding of No Significant Impact
Dakota-3 E&P**

**Addendum to Environmental Assessment to Authorize Land Use for Gathering Pipelines
Connecting the Skunk Creek #23-14C Well to the Arrow Two Shields Butte #2-24-
12H/Skunk Creek #2-24-25H Gathering Pipeline System**

**Fort Berthold Indian Reservation
Dunn County, North Dakota**

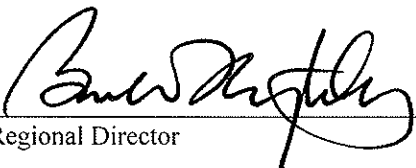
The U.S. Bureau of Indian Affairs (BIA) has received a proposed Addendum to Environmental Assessment authorizing land use for gathering pipelines connecting the Skunk Creek #23-14C Well to the Arrow Two Shields Butte #2-24-12H/Skunk Creek #2-24-25H Gathering Pipeline System on the Fort Berthold Indian Reservation in McKenzie County, North Dakota. Associated federal actions by BIA include determinations of effect regarding cultural resources, approvals of leases, rights-of-way and easements, and a positive recommendation to the Bureau of Land Management regarding the Applications for Permit to Drill.

The potential of the proposed actions to impact the human environment is analyzed in the attached Environmental Assessment (EA), as required by the National Environmental Policy Act. Based on the recently completed EA, I have determined that the proposed projects will not significantly affect the quality of the human environment. No Environmental Impact Statement is required for any portion of the proposed activities.

This determination is based on the following factors:

1. Agency and public involvement was solicited and environmental issues related to the proposal were identified.
2. Protective and prudent measures were designed to minimize impacts to air, water, soil, vegetation, wetlands, wildlife, public safety, water resources, and cultural resources. The remaining potential for impacts was disclosed for both the proposed action and the No Action alternative.
3. Guidance from the U.S. Fish and Wildlife Service has been fully considered regarding wildlife impacts, particularly in regard to threatened or endangered species. This guidance includes the Migratory Bird Treaty Act (16 U.S.C. 703 et seq.) (MBTA), the National Environmental Policy Act of 1969, as amended (42 U.S.C. 4321 et seq.) (NEPA), the Bald and Golden Eagle Protection Act (16 U.S.C. 668-668d, 54 Stat. 250) (BGEPA), Executive Order 13186 "Responsibilities of Federal Agencies to Protect Migratory Birds", and the Endangered Species Act (16 U.S.C. 1531 et seq.) (ESA).
4. The proposed actions are designed to avoid adverse effects to historic, archaeological, cultural and traditional properties, sites and practices. Compliance with the procedures of the National Historic Preservation Act is complete.
5. Environmental justice was fully considered.
6. Cumulative effects to the environment are either mitigated or minimal.
7. No regulatory requirements have been waived or require compensatory mitigation measures.
8. The proposed projects will improve the socio-economic condition of the affected Indian community.

Acting


Regional Director


Date

ENVIRONMENTAL ASSESSMENT Addendum

United States Bureau of Indian Affairs

**Great Plains Regional Office
Aberdeen, South Dakota**



Dakota-3 E&P Company, LLC

**Addendum to Environmental Assessment to Authorize Land Use for Gathering Pipelines
Connecting the Skunk Creek #23-14C Well to the Arrow Two Shields Butte #2-24-
12H/Skunk Creek #2-24-25H Gathering Pipeline System**

Fort Berthold Indian Reservation

October 2011

For information contact:
Bureau of Indian Affairs, Great Plains Regional Office
Division of Environment, Safety and Cultural Resources Management
115 4th Avenue SE, Aberdeen, South Dakota 57401
(605) 226-7656

TABLE OF CONTENTS

	<u>Page</u>	
1. Purpose and Need for the Proposed Action	1	
2. Authorities	1	
3. Legal Land Description for Proposed Action	1	
4. Scope of Work for Proposed Action.....	1	
5. Materials Information and Corrosion Rates.....	2	
Steel Pipe.....	2	
Fiberspar® or Similar Pipe	2	
6. Spill Response Plan	2	
7. Pipeline Marking Procedures.....	3	
8. Quality Control/Quality Assurance Measures	3	
9. Valve Locations	3	
10. Reclamation.....	3	
Interim Reclamation.....	3	
Final Reclamation	4	
11. Trust Resources.....	5	
12. Applicable National Environmental Policy Act (NEPA) Document(s).....	5	
13. Other Relevant Documentation.....	6	
<i>Environmental Assessment for Drilling of Oil & Gas Wells: Skunk Creek #16-23-14-2H, Skunk Creek #16-23-14-2H3, Skunk Creek #16-23-14-1H, Two Shield Butte #14-19-18-4H, Two Shield Butte #14-19-18-4H3, Two Shields Butte #14-19-18-3H, Two Shields Butte #14-19-18-2H3, Two Shields Butte #13-22-16-1H, Two Shields Butte #13-22-16-1H3, Two Shields Butte #13-22-33-16H, Skunk Creek #13-18-7-4H, Skunk Creek #13-18-7-4H3, Skunk Creek #13-18-7-3H, Skunk Creek #16-18-7-1H, Skunk Creek #16-18-7-1H3, Skunk Creek #16-18-7-2H (April 2011).</i>		6
14. NEPA Adequacy Criteria.....	6	

LIST OF FIGURES

<u>Figure</u>	<u>Page</u>
Figure 1. Proposed Skunk Creek #23-14HC gathering pipeline alignment.....	7

LIST OF APPENDICES

Appendix

A. Pipeline Layout and Pipeline Right-of-Way for Skunk Creek #23-14HC

*Addendum to Environmental Assessment to Authorize Land Use for Gathering Pipelines
Connecting the Skunk Creek #23-14HC Well to the Arrow Two Shields Butte #2-24-12H/Skunk
Creek #2-24-25H Gathering Pipeline System*

1. Purpose and Need for the Proposed Action

Dakota-3 E&P Company, LLC (Dakota-3) is proposing to construct a gathering oil, gas, and water pipeline system within Fort Berthold Indian Reservation. Developments have been proposed on land held in trust by the United States in Dunn County, North Dakota. The Bureau of Indian Affairs (BIA) is the surface management agency for potentially affected tribal lands and individual allotments. The BIA also holds title to subsurface mineral rights. The economic development of available resources and associated BIA actions are consistent with BIA's general mission. Leasing and development of mineral resources offer substantial economic benefits to the Three Affiliated Tribes of the Mandan, Hidatsa, and Arikara Nations and to individual tribal members.

The Skunk Creek #16-23-14 Well Pad was the subject of an April 2011 Finding of No Significant Impact (FONSI) under the previous operator, Kodiak Oil and Gas. Since that time, Dakota-3 assumed operator status and changed the name of the well pad to the Skunk Creek #23-14HC. The purpose of the proposed action is to authorize the land use by Dakota-3 for the construction and installation of one set of gathering pipelines; one oil line, one gas line, and one water line, all of which will not individually exceed a diameter of 8 inches. The proposed gathering pipelines would transport oil, gas, and produced water from productive wells to markets and disposal facilities. A buried electrical line may be installed in the future.

2. Authorities

Oil and gas exploration and development activities are conducted under authority of the Indian Mineral Leasing Act of 1938 (25 United States Code [USC] 396a, et seq.), the Indian Mineral Development Act of 1982 (25 USC 2101, et seq.), and the Energy Policy Act of 2005 (42 USC 15801, et seq.).

3. Legal Land Description for Proposed Action

The Skunk Creek #23-14HC gathering pipelines would originate from the northwest corner of the well pad, in the SE¼ of Section 23, Township (T) 149 North (N), Range (R) 93 West (W), then run northeast through the NW¼ of Section 24, T149N, R93W, and terminate in the SW¼ SW¼ of Section 13, T149N, R93W, all in Dunn County, North Dakota.

4. Scope of Work for Proposed Action

Dakota-3 proposes to construct and install oil, gas, and water gathering pipelines that would join the Skunk Creek #23-14HC well to the Arrow Two Shields Butte #2-24-12H/Skunk Creek #3-24-25H gathering pipelines. Approximately 4,556 feet of right-of-way would be required to connect with the Arrow Two Shields Butte #2-24-12H/Skunk Creek #3-24-25H gathering pipelines. Oil, gas, and water pipelines would be buried in either two 2.5-foot-wide trenches, spaced 5.0 feet apart, or one 5.0-foot-wide trench. Oil and gas pipelines would be no greater

*Addendum to Environmental Assessment to Authorize Land Use for Gathering Pipelines
Connecting the Skunk Creek #23-14HC Well to the Arrow Two Shields Butte #2-24-12H/Skunk
Creek #2-24-25H Gathering Pipeline System*

than 8 inches in diameter and constructed of steel. The water pipeline would also be no greater than 8 inches in diameter and constructed of Fiberspar[®] or similar material.

All construction disturbances would occur within a 100-foot-wide temporary right-of-way (ROW) and permanent surface disturbance would occur within a 50-foot ROW between the Skunk Creek #23-14HC well pad and the Arrow Two Shields Butte #2-24-12H/Skunk Creek #3-24-25H gathering pipelines, which have been surveyed for impacts to natural and cultural resources with no significant findings. In total, approximately 10.46 acres will be temporarily disturbed as a result of activities associated with the construction of the proposed gathering pipeline. Pipeline plats are provided in Appendix A.

5. Materials Information and Corrosion Rates

D3 proposes to construct the pipelines according to the specifications used by Arrow Pipeline, LLC (Arrow). These specifications may vary if D3 uses different materials and methods to install the pipelines. If the technical specifications of the materials vary from those contained herein, D3 will provide the BIA with a revised technical specification explanation that contains the same or similar information as disclosed below.

Steel Pipe

D3 proposes to construct the oil and gas pipelines using new steel pipe rated by the American Petroleum Institute (API) as 5L X52. D3 would ensure that each steel pipe segment is coated with approximately 14 to 16 millimeters of fusion bonded epoxy coating. Further, D3 would deploy an active cathodic protection system for all steel pipe, which further reduces the likelihood of external corrosion. Arrow would ensure that each steel pipe segment is allotted a 1/16-inch corrosion allowance; however, because of the non-corrosive nature of Bakken crude and the low concentrations of hydrogen sulfide, D3 does not anticipate any external or internal corrosion during the operating lifetime of the pipe, which, at a minimum, is estimated to be 50 years.

Fiberspar[®] or Similar Pipe

D3 proposes to construct the produced water pipeline using a material known as Fiberspar or one with the same corrosion resistant characteristics as Fiberspar. This type of material is not subject to internal or external corrosion.

6. Spill Response Plan

Arrow has developed a Spill Response Plan (Plan) (Middick 2011¹) for the Phase 3SW pipeline. The spill preventative measures and monitoring protocols, notification procedures, spill detection and on-scene spill mitigation procedures, response activities, contacts, training and drill procedures, and response plan review and update procedures, as referenced in the Plan, apply to the proposed pipelines, so long as Arrow remains the operator. A copy of the

¹ Middick, Andy. 2011. *Operations Monitoring and Spill Response Plan*. Blackshare Environmental Solutions. Oklahoma City, Oklahoma.

*Addendum to Environmental Assessment to Authorize Land Use for Gathering Pipelines
Connecting the Skunk Creek #23-14HC Well to the Arrow Two Shields Butte #2-24-12H/Skunk
Creek #2-24-25H Gathering Pipeline System*

Plan has been filed with the BIA and Arrow has legally committed to adhering to the procedures and requirements as defined by federal law (Title 49 Code of Federal Regulations [CFR] 194). D3 has committed to developing a project specific spill response plan that will be submitted to the BIA prior to the commencement of construction activities.

7. Pipeline Marking Procedures

D3 adheres to the requirements of 49 CFR 192.707 with regard to the marking of buried pipelines. Specifically, D3 would place pipeline markers within 1,000 feet of one another, at all public road crossings, railroad crossings, creek crossings, fence crossings, and at all points of major direction change.

8. Quality Control/Quality Assurance Measures

D3 would purchase steel pipe that is rated as API 5L X52 and would inspect all pipe while at the mill to ensure quality. D3 would ensure that external epoxy coating is applied to a minimum thickness of 14 millimeters. During construction, all welds are visually inspected for quality and completeness by qualified professionals. Once welds have passed visual inspection, they are subjected to 100 percent Non Destructive Testing. After passing these tests, the weld areas are covered for corrosion protection. After the weld areas have been covered, the external coating of the pipe is inspected using a jeepmeter to detect holes and cracks. The pipe is lowered into the trench and buried. Prior to being put into service, the steel pipe is hydrotested to approximately 1.5 times the minimum design pressure of 1,180 pounds per square inch gauge (psig).

The produced water pipe is designed to sustain a minimum pressure of 750 psig and is hydrotested to approximately 900 psig prior to being approved for service.

9. Valve Locations

Two valves would be installed at each end of the proposed pipelines. One valve would be installed at the well location while the second valve would be installed at the proposed tie-in with the Phase 2SE pipeline. The installation of two valves would allow D3 to isolate the proposed gathering pipelines if required.

10. Reclamation

Interim Reclamation

Reclamation would continue to occur over the life of the pipelines. Initial reclamation would be required after initial construction and then following any maintenance work or additions of infrastructure. Reclamation would be required before final abandonment of the decommissioned pipeline. A successful reclamation would at all times be the responsibility of the system's operator.

*Addendum to Environmental Assessment to Authorize Land Use for Gathering Pipelines
Connecting the Skunk Creek #23-14HC Well to the Arrow Two Shields Butte #2-24-12H/Skunk
Creek #2-24-25H Gathering Pipeline System*

Trenches would be back-filled immediately after the pipe is installed and testing is complete, assuming frozen or saturated soils are not present. Back-fill piles would be stored opposite of the topsoil piles during construction. If construction is to occur during winter, D3 will partially fill the trench with useable, non-frozen, back-fill soil to the extent possible and cover the entire ROW including the trench with straw. The trench would be back-filled and topsoil distributed as soon as practicable after the soil has defrosted. Topsoil piles would be covered to eliminate the potential for rill erosion and subsequent loss of soil during spring snow melt and precipitation events.

Applicable short- and long-term best management practices would be used to minimize and control erosion in disturbed areas. To reduce compaction, the ROW would be plowed before the stockpiled topsoil is distributed.

The disturbed areas would be reclaimed and contoured as soon as possible after construction is complete (fall/spring). The ROW would be covered with stockpiled topsoil and reseeded with a seed mixture determined by the BIA. D3 would control noxious weeds within the ROW and other applicable facilities by approved chemical or mechanical methods. If seeding of the ROW does not occur due to growing season constraints, D3 will deploy approved weed-free hay across the entire ROW. The presence of hay across the ROW will reduce the potential for excessive erosion as a result of spring snow melt and precipitation.

The entire ROW would be monitored for erosion, subsidence, or noxious weeds. In areas where problems are found to occur, reclamation efforts would continue until the BIA feels the ROW is successfully reclaimed. Reclamation is considered successful when:

- seeded areas are established;
- adjacent vegetative communities spread back into the disturbed areas; and
- noxious weeds are under control.

If after two growing seasons the new seeding is not successful, the BIA may require additional efforts to establish vegetation. For noxious weeds, a survey was conducted on the ROW prior to the construction commencing. The BIA has developed a weed management plan to treat known or likely to occur noxious weed species.

Final Reclamation

Final reclamation would occur when the pipeline is decommissioned. All disturbed areas would be reclaimed, reflecting the BIA's view of oil and gas exploration and production as temporary intrusions on the landscape. All facilities would be removed. Work areas would be leveled or backfilled as necessary, scarified, recontoured, and seeded. It is economically and environmentally unfeasible to excavate and remove the decommissioned pipeline. Instead it would be purged with water of any natural gas remaining in the lines and abandoned in place.

*Addendum to Environmental Assessment to Authorize Land Use for Gathering Pipelines
Connecting the Skunk Creek #23-14HC Well to the Arrow Two Shields Butte #2-24-12H/Skunk
Creek #2-24-25H Gathering Pipeline System*

11. Trust Resources

A cultural resource inventory of this pipeline route was conducted by personnel of SWCA Environmental Consultants, using an intensive pedestrian methodology. Approximately 34.6 acres were inventoried on May 24, 2011 (Leroy and Reinhart 2011). No historic properties were located that appear to possess the quality of integrity and meet at least one of the criteria (36 CFR 60.6) for inclusion on the National Register. As the lead federal agency, and as provided for in 36 CFR 800.5, on the basis of the information provided, BIA reached a determination of no historic properties affected for this undertaking. This determination was communicated to the THPO on September 28, 2011; however the THPO did not respond within the allotted 30 day comment period.

Leroy, Adam, and Damien Reinhart

(2011) A Class I and Class III Cultural Resource Inventory of the Skunk Creek 23-14HC Gathering Pipeline, Fort Berthold Indian Reservation, Dunn County, North Dakota. SWCA Environmental Consultants for Dakota-3 E & P Company, LLC, Denver.

A natural resource inventory of the proposed alignment was conducted by SWCA ecologists on May 24, 2011. BIA environmental specialist Jeff Desjarlais approved the proposed location on the same date. No threatened or endangered species or habitat, migratory birds and active nests, or bald and golden eagles and active/inactive nests, were observed during the field survey and are not anticipated to be impacted by construction activities.

Potential direct impacts to natural resources may include the loss of native vegetation and wildlife habitat, soil disturbance, and erosion during construction that may adversely affect air and water quality. Impacts would be mitigated by using best management practices during construction to minimize disturbance. Once construction activities are completed, reclamation would take place within 6 months and would include the return of topsoil and contouring, and seeding of native vegetation.

Potential indirect impacts include noise and other disturbances to wildlife during construction and the introduction of noxious weeds. Impacts would be mitigated through avoidance of any federally listed threatened or endangered species or wetlands, avoidance of nesting migratory birds, implementing best management practices to control the introduction of noxious weeds, and minimizing the length of time between trenching, pipeline burial, and reclamation. These mitigation measures are consistent with the approved National Environmental Policy Act (NEPA) document, which received a finding of no significant impact (FONSI) (March 2010).

12. Applicable National Environmental Policy Act (NEPA) Document(s)

Environmental Assessment: Arrow Midstream Holdings, LLC, Oil, Gas, and Water Gathering System Phase 1B - South (BIA 12 – 14) (March 2010).

Addendum to Environmental Assessment to Authorize Land Use for Gathering Pipelines Connecting the Skunk Creek #23-14HC Well to the Arrow Two Shields Butte #2-24-12H/Skunk Creek #2-24-25H Gathering Pipeline System

13. Other Relevant Documentation

Addendum to Environmental Assessment to Authorize Land Use for Gathering Pipelines Connecting the Two Shields Butte #2-24-12H/Skunk Creek #2-24-25H Well Pad and the Two Shields Butte #3-24-12H/Skunk Creek #3-24-25H Well Pad to the Arrow Phase 1B South Pipeline (October 2010).

Environmental Assessment for Drilling of Oil & Gas Wells: Skunk Creek #16-23-14-2H, Skunk Creek #16-23-14-2H3, Skunk Creek #16-23-14-1H, Two Shield Butte #14-19-18-4H, Two Shield Butte #14-19-18-4H3, Two Shields Butte #14-19-18-3H, Two Shields Butte #14-19-18-2H3, Two Shields Butte #13-22-16-1H, Two Shields Butte #13-22-16-1H3, Two Shields Butte #13-22-33-16H, Skunk Creek #13-18-7-4H, Skunk Creek #13-18-7-4H3, Skunk Creek #13-18-7-3H, Skunk Creek #16-18-7-1H, Skunk Creek #16-18-7-1H3, Skunk Creek #16-18-7-2H (April 2011).

14. NEPA Adequacy Criteria

This document has identified previously prepared NEPA documents including, *Environmental Assessment: Arrow Midstream Holdings, LLC, Oil, Gas, and Water Gathering System Phase 1B – South (BIA 12 – 14)* and *Addendum to Environmental Assessment to Authorize Land Use for Gathering Pipelines Connecting the Two Shields Butte #2-24-12H/Skunk Creek #2-24-25H Well Pad and the Two Shields Butte #3-24-12H/Skunk Creek #3-24-25H Well Pad to the Arrow Phase 1B South Pipeline (October 2010)*, which adequately describe the environmental consequences of the newly proposed action described herein, and meet the following NEPA Adequacy Criteria.

1. The proposed action is substantially the same action and at the site specifically analyzed in the existing NEPA document.
2. The range of alternatives is reasonable with respect to the current proposed action in the existing NEPA document, which appropriately considers and analyzes current environmental concerns, interests, and resource values.
3. The existing analysis and conclusions are adequate in the existing NEPA document. The analysis is still valid in light of new studies or resource assessment information.
4. The methodology and analytical approach used in the existing NEPA document continues to be appropriate for the proposed action.
5. The direct and indirect impacts of the proposed action are unchanged from those identified in the existing NEPA document.
6. The cumulative impacts that would result from implementation of the proposed action are unchanged from those analyzed in the existing NEPA document.
7. A 30-day comment period involving public input and interagency review was used in the development of the existing NEPA document.

*Addendum to Environmental Assessment to Authorize Land Use for Gathering Pipelines
Connecting the Skunk Creek #23-14HC Well to the Arrow Two Shields Butte #2-24-12H/Skunk
Creek #2-24-25H Gathering Pipeline System*

Contains Privileged Information -- Do Not Release

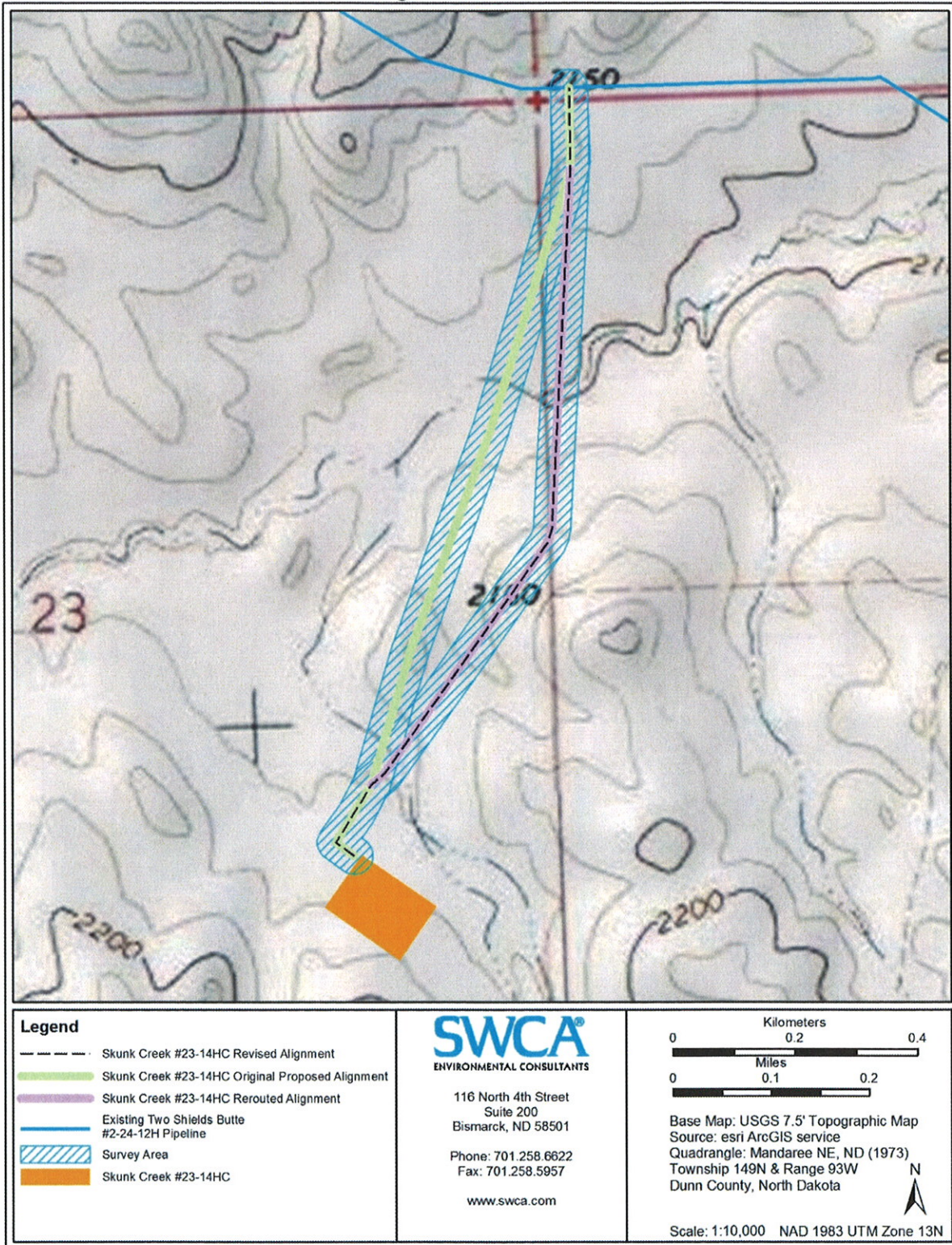


Figure 1. Proposed Skunk Creek #23-14HC gathering pipeline alignment

*Addendum to Environmental Assessment to Authorize Land Use for Gathering Pipelines
Connecting the Skunk Creek #23-14HC Well to the Arrow Two Shields Butte #2-24-12H/Skunk
Creek #2-24-25H Gathering Pipeline System*



United States Department of the Interior

BUREAU OF INDIAN AFFAIRS
Great Plains Regional Office
115 Fourth Avenue S.E., Suite 400
Aberdeen, South Dakota 57401



IN REPLY REFER TO:
DESCRM
MC-208

SEP 28 2011

Elgin Crows Breast, THPO
Mandan, Hidatsa and Arikara Nation
404 Frontage Road
New Town, North Dakota 58763

Dear Mr. Crows Breast:

We have considered the potential effects on cultural resources of an oil well pad and a gathering pipeline in Dunn County, North Dakota. Approximately 83.64 acres were intensively inventoried using a pedestrian methodology. Potential surface disturbances are not expected to exceed the areas depicted in the enclosed reports. Seven archaeological sites No historic properties were located which appear to possess the quality of integrity and meet at least one of the criteria (36 CFR 60.4) for inclusion on the National Register of Historic Places. No properties were located that appear to qualify for protection under the American Indian Religious Freedom Act (42 USC 1996).

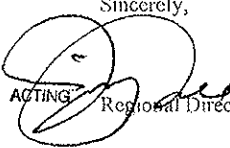
As the surface management agency, and as provided for in 36 CFR 800.5, we have therefore reached a determination of **no historic properties** affected for these undertakings. Catalogued as BIA Case Number AAO-1948/FB/11, the proposed undertakings, locations, and project dimensions are described in the following reports:

Leroy, Adam, and Damien Reinhart
(2011) A Class I and Class III Cultural Resource Inventory of the Skunk Creek 23-14HC Gathering Pipeline, Fort Berthold Indian Reservation, Dunn County, North Dakota. SWCA Environmental Consultants for Dakota-3 E & P Company, LLC, Denver.

Schleicher, Jolene, and Chandler S. Herson
(2011) A Class I and Class III Cultural Resources Inventory of the Paul Peter Coffee #35H Well Pad and Utility Corridor, Fort Berthold Indian Reservation, Dunn County, North Dakota. SWCA Environmental Consultants for Dakota-3 E&P Company, LLC, Denver.

If your office concurs with this determination, consultation will be completed under the National Historic Preservation Act and its implementing regulations. We will adhere to the Standard Conditions of Compliance.

If you have any questions, please contact Dr. Carson N. Murdy, Regional Archaeologist, at (605) 226-7656.

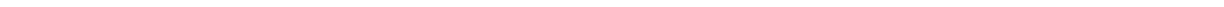
Sincerely,

ACTING Regional Director

Enclosures

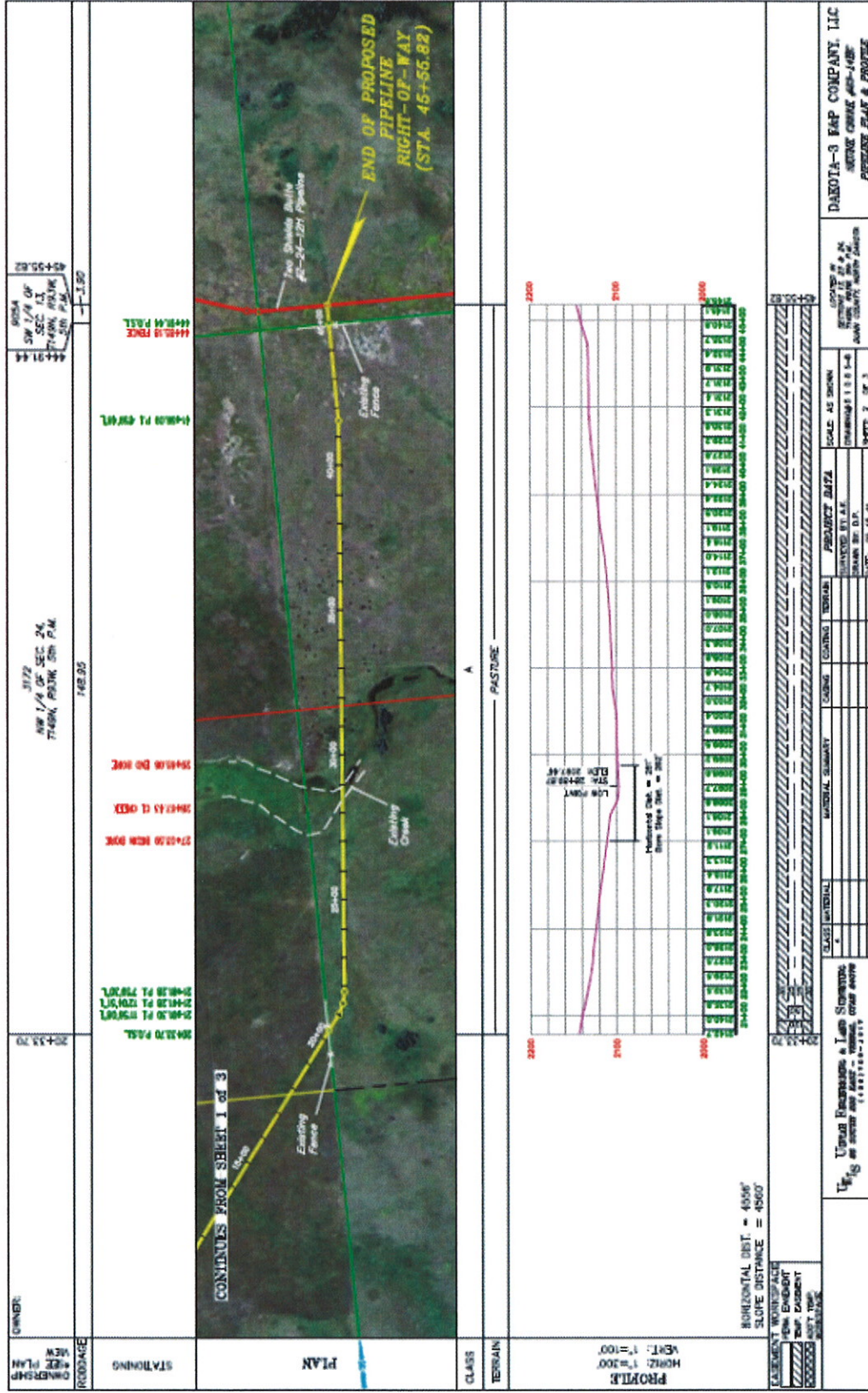
cc: Chairman, Three Affiliated Tribes
Superintendent, Fort Berthold Agency

APPENDIX A

Pipeline Layout and Pipeline Right-of-Way For Skunk Creek #23-14HC



Addendum to Environmental Assessment to Authorize Land Use for Gathering Pipelines Connecting the Skunk Creek #23-14HC Well to the Arrow Two Shields Butte #2-24-12H/Skunk Creek #2-24-25H Gathering Pipeline System



Notice of Availability and Appeal Rights

Dakota-3 E&P: Addendum to Environmental Assessment to Authorize Land Use for Gathering Pipelines Connecting the Skunk Creek #23-14C Well to the Arrow Two Shields Butte #2-24-12H/Skunk Creek #2-24-25H Gathering Pipeline System

The Bureau of Indian Affairs (BIA) is planning to issue administrative approvals related to an Addendum to Environmental Assessment to Authorize Land Use for Gathering Pipelines Connecting the Skunk Creek #23-14C Well to the Arrow Two Shields Butte #2-24-12H/Skunk Creek #2-24-25H Gathering Pipeline System on the Fort Berthold Reservation as shown on the attached map. Construction by Dakota-3 E&P Resources is expected to begin in 2011.

An environmental assessment (EA) determined that proposed activities will not cause significant impacts to the human environment. An environmental impact statement is not required. Contact Earl Silk, Superintendent at 701-627-4707 for more information and/or copies of the EA and the Finding of No Significant Impact (FONSI).

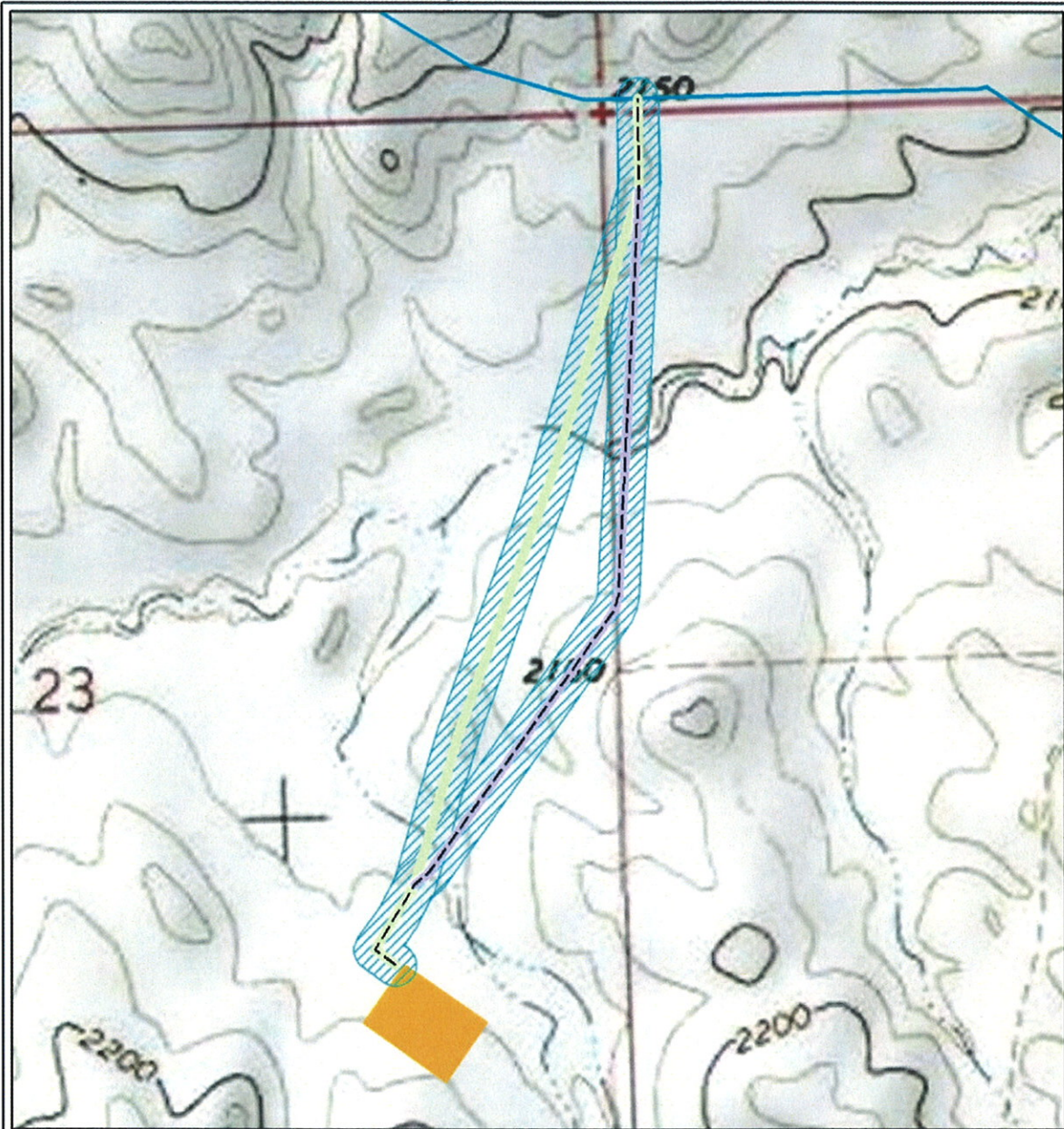
The FONSI is only a finding on environmental impacts – it is not a decision to proceed with an action and *cannot* be appealed. BIA's decision to proceed with administrative actions *can* be appealed until December 1, 2011, by contacting:

**United States Department of the Interior
Office of Hearings and Appeals
Interior Board of Indian Appeals
801 N. Quincy Street, Suite 300, Arlington, Va 22203.**

Procedural details are available from the BIA Fort Berthold Agency at 701-627-4707.

Project locations.

Contains Privileged Information -- Do Not Release



Legend	
	Skunk Creek #23-14HC Revised Alignment
	Skunk Creek #23-14HC Original Proposed Alignment
	Skunk Creek #23-14HC Rerouted Alignment
	Existing Two Shields Butte #2-24-12H Pipeline
	Survey Area
	Skunk Creek #23-14HC

SWCA[®]
 ENVIRONMENTAL CONSULTANTS

116 North 4th Street
 Suite 200
 Bismarck, ND 58501

Phone: 701.258.6622
 Fax: 701.258.5957

www.swca.com

Kilometers
 0 0.2 0.4

Miles
 0 0.1 0.2

Base Map: USGS 7.5' Topographic Map
 Source: esri ArcGIS service
 Quadrangle: Mandaree NE, ND (1973)
 Township 149N & Range 93W
 Dunn County, North Dakota

N

Scale: 1:10,000 NAD 1983 UTM Zone 13N