

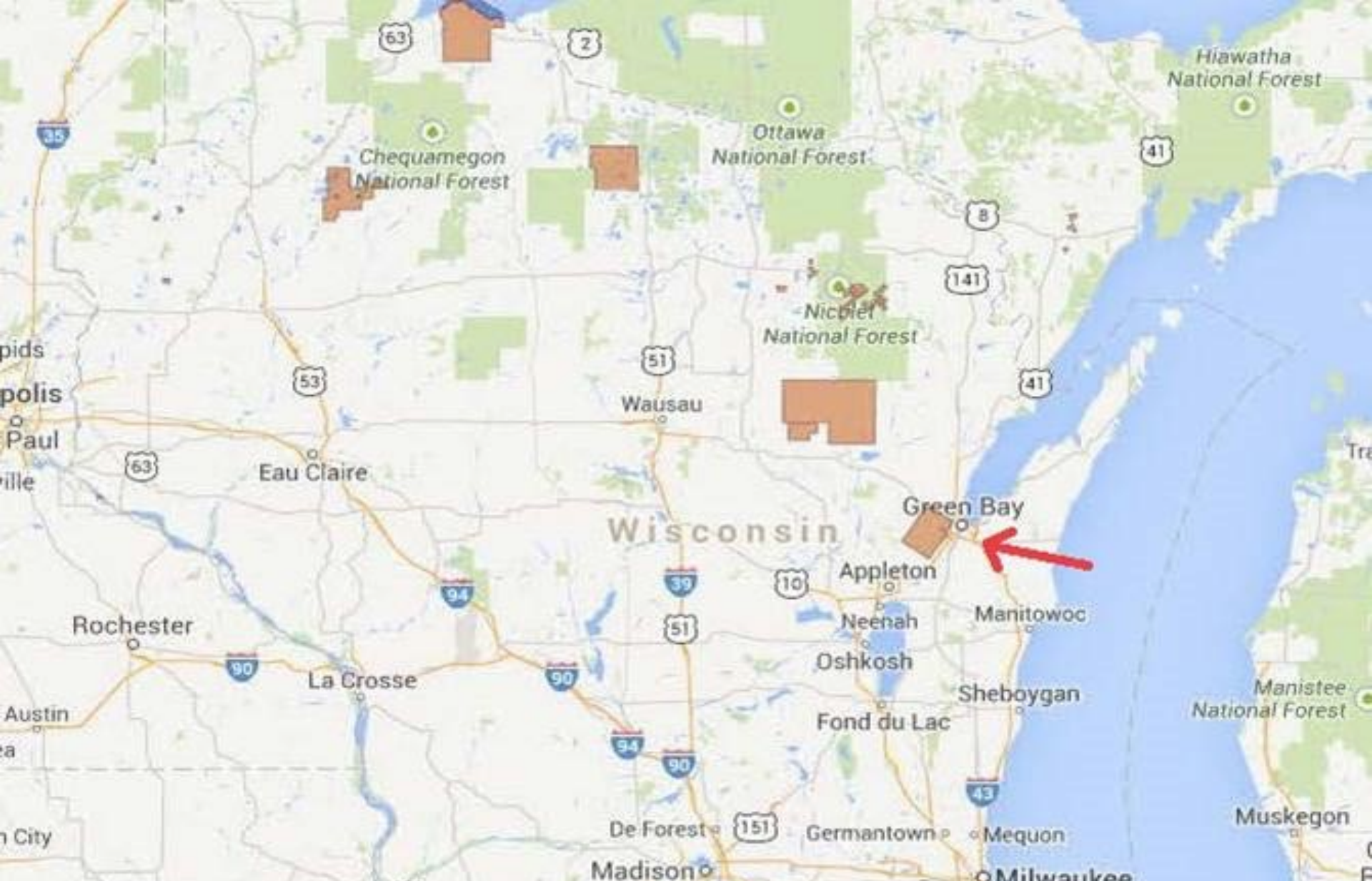
# Tribal Perspective – Fee to Trust

prepared for:

BIA Partners in Action

July 19, 2018





A good mind. A good heart. A strong fire.





# Fee to Trust Consortium

- Began in 2004
- BIA staff dedicated to processing applications
- Land will move into trust faster
- The Nation sent 210 applications by 2007
- 165 applications/properties in trust
- 38 applications are being processed

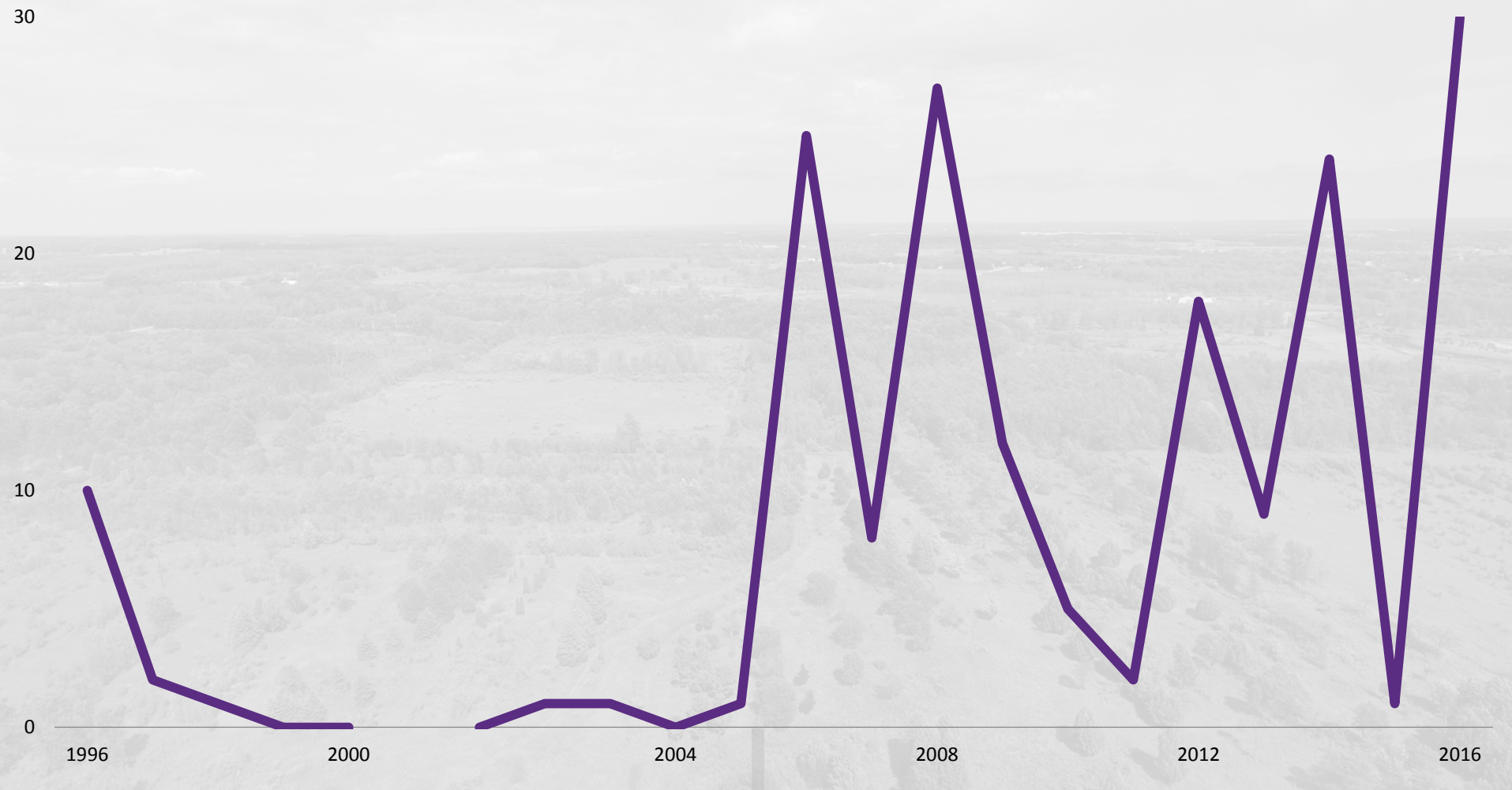
# **Land Moving into Trust Faster**

- **In 2004 the average was 4 properties in trust per year**
- **Our current average since the consortium is now 12 properties in trust per year**



# Pre-Consortium

# Consortium



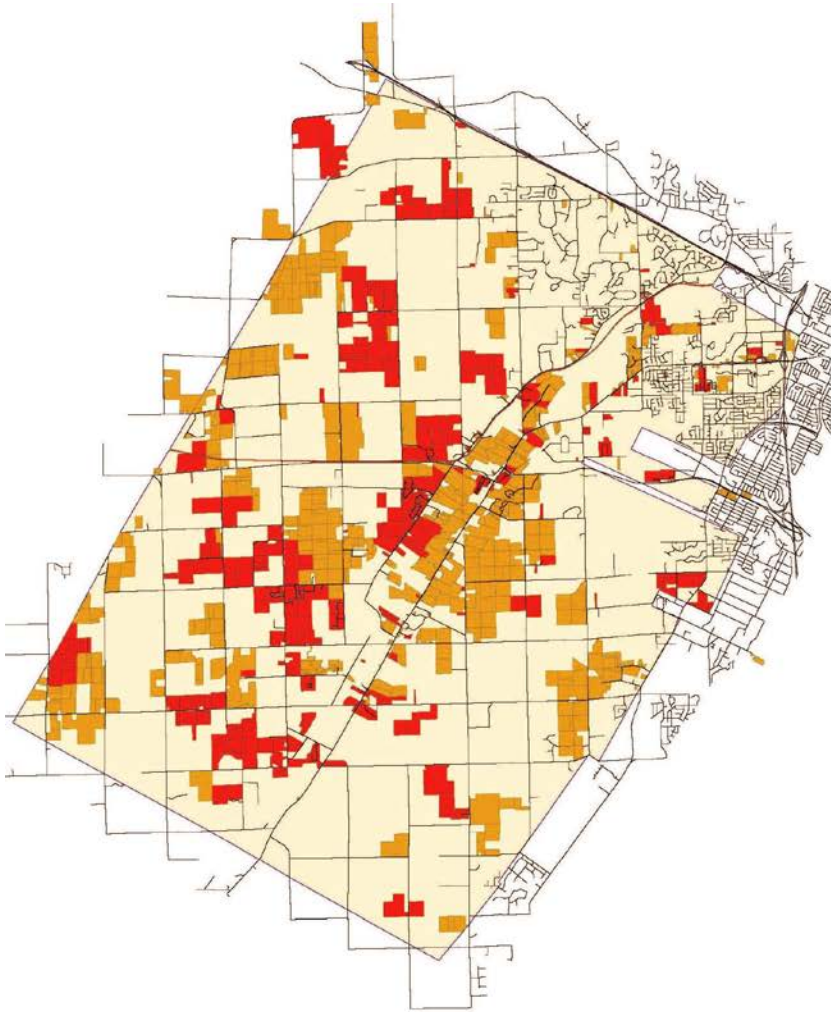
A good mind. A good heart. A strong fire.



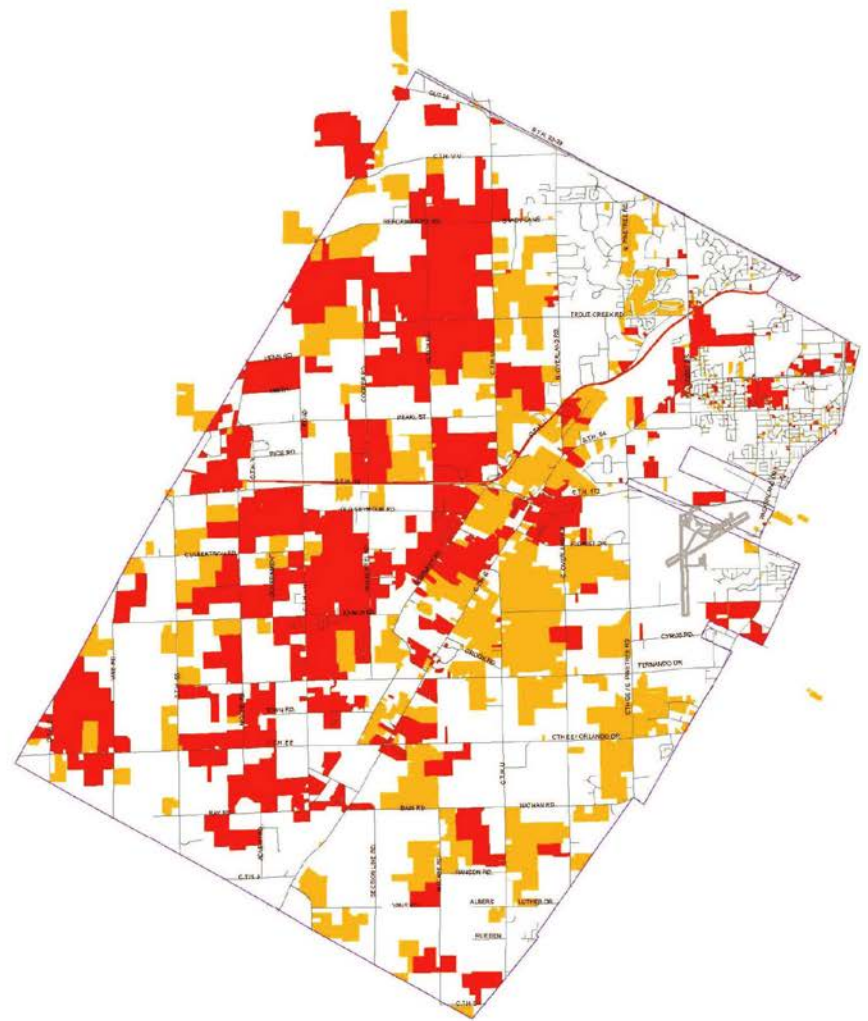
# Acres in Trust

- In the 2004 ownership map we had **7,284 acres held in trust and 10,093 in Fee**
- The current ownership map shows **14,507 acres of land in trust and 11,404 in Fee**

# 2004



# 2016

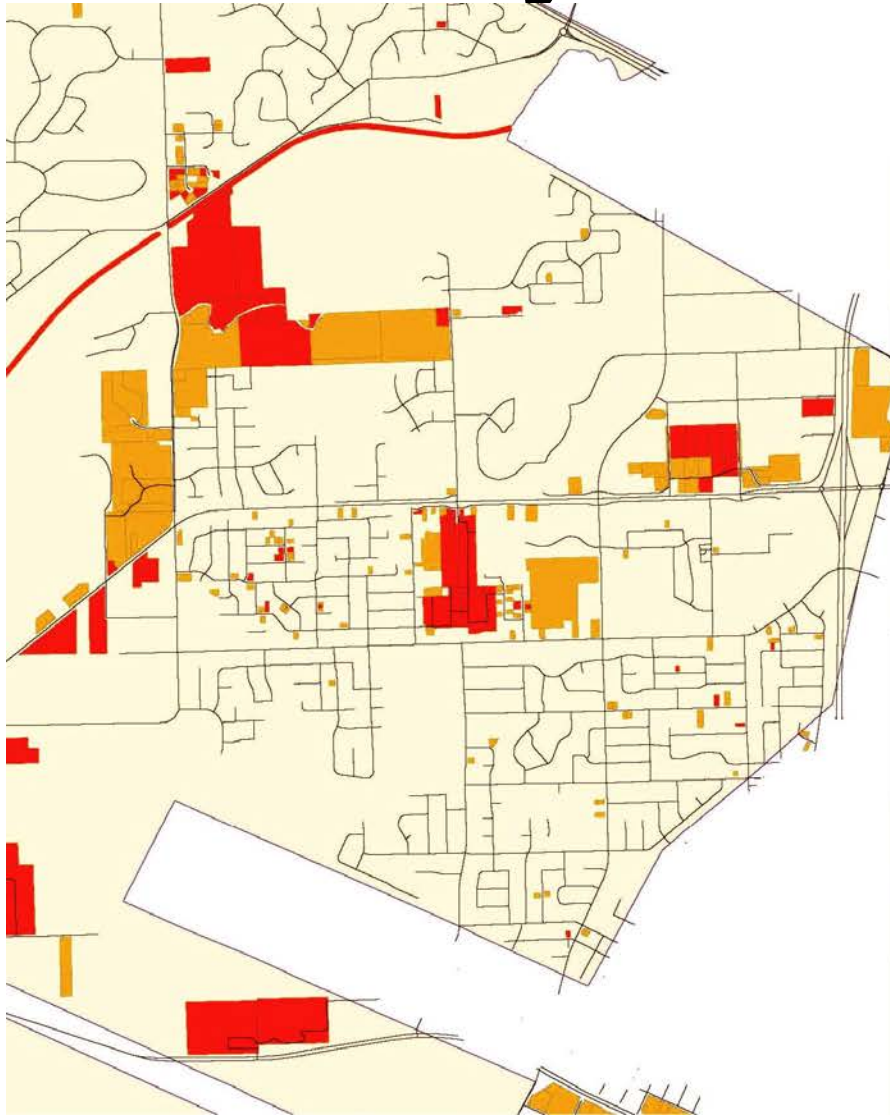


A good mind. A good heart. A strong fire.





# Green Bay Area



A good mind. A good heart. A strong fire.





# Taxes

2006	<b>\$327,489.25</b>
2007	<b>\$15,439.74</b>
2008	<b>\$18,961.02</b>
2009	<b>\$20,349.48</b>
2010	<b>\$5,918.84</b>
2011	<b>\$1,469.28</b>
2012	<b>\$66,208.04</b>
2013	<b>\$45,359.10</b>
2014	<b>\$177,158.97</b>
2015	<b>\$15,224.93</b>
2016	<b>\$109,327.65</b>

A good mind. A good heart. A strong fire.



# **Oneida Fee to Trust Process**

- **Service Agreements**
- **Clearing title exceptions**
- **Any clean up to the property**

A good mind. A good heart. A strong fire.





# Questions?

**Oneida Nation  
Land Management  
470 Airport Road, Oneida WI 54155  
Office (920)869-1690 or  
1-800-684-1697  
[www.oneidanation.org/land](http://www.oneidanation.org/land)**

A good mind. A good heart. A strong fire.

