



Office of Trust Funds Investments

OTFI Overview
Market Information

2018 Partners In Action Conference
“New Horizons, Honored Past”
Wednesday July 18, 2018

Office of Trust Funds Investments



Pamela Jurgensen, Director

505-816-1102

Richard Zakrzewski, Senior Investment Officer

505-816-1112

Western and Pacific

Sonny Holladay, Investment Officer

505-816-1104

Great Plains, Rocky Mountain, and Eastern Oklahoma

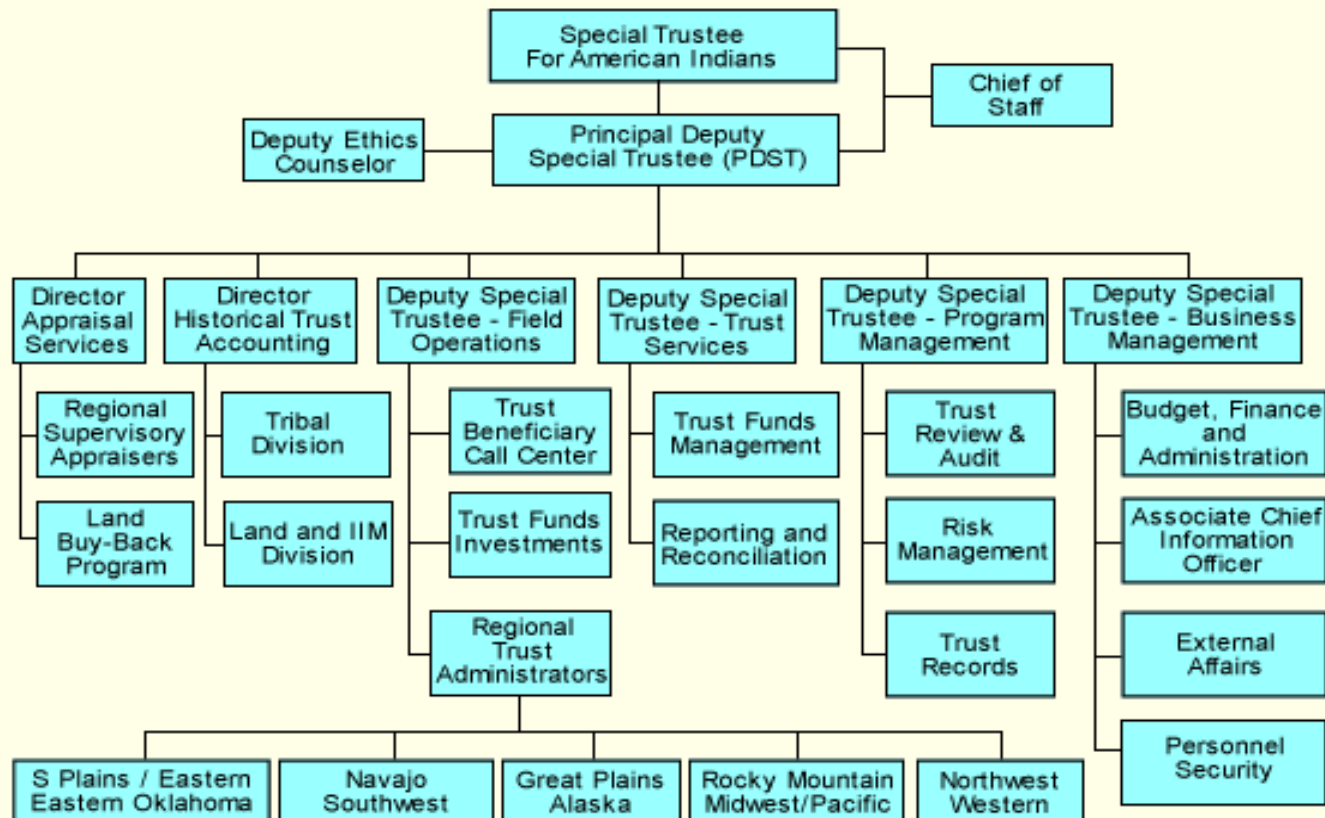
Douglas Billey, Investment Officer

505-816-1113

Northwest, Southern Plains, Eastern, Southwest, Midwest,
Navajo and Alaska

Office of Trust Funds Investments

OST STAFF DIRECTORY



Office of Trust Funds Investments

- **Office of Trust Funds Investments** is responsible for:
 - Providing investment management of approximately \$4.1 billion tribal trust funds and the \$869 million IIM fund, in accordance with applicable laws, regulations and policies
 - Planning, developing, operating and controlling the buying, selling and trading of investment instruments
 - Providing technical advice and assistance on investment-related matters to Indian tribes, Fiduciary Trust Officers and OST senior management

Office of Trust Funds Investments

How We Manage Accounts

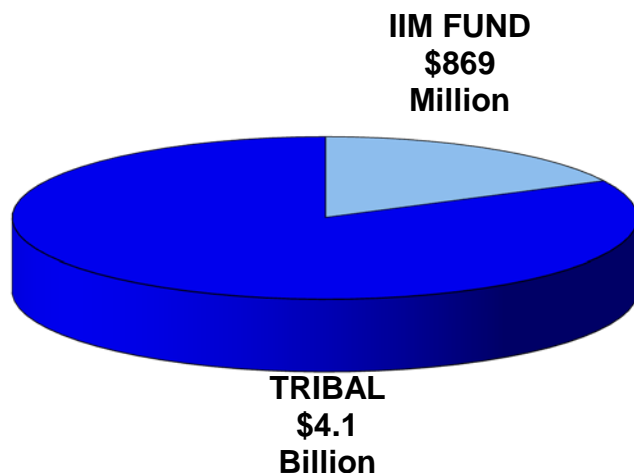
- **25 U.S.C. 162a limits investments U.S. Government fixed income securities**
- **Treasury and Agency fixed income securities**
- **OST Investment Policy**
- **OST Investment Committee**
- **Communication with the tribal representatives and the Fiduciary Trust Officer**
- **Current Market Conditions**
- **Investment strategy**
- **Investment Objectives**

Tribal Account Needs and Objectives

- **Liquidity:** Sufficient funds need to be maintained in short-term investments which are readily available to meet expected distributions. Funds may be withdrawn on short notice.
- **Income:** Account funds should be used to generate current income to meet tribal operating needs.
- **Long-Term:** Account funds are not expected to be withdrawn in the foreseeable future.

Office of Trust Funds Investments

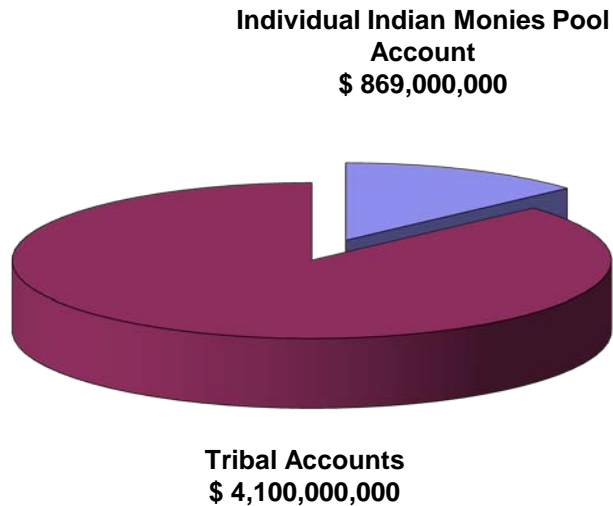
Funds Managed
As of September 30, 2017
(approximate amounts in millions)



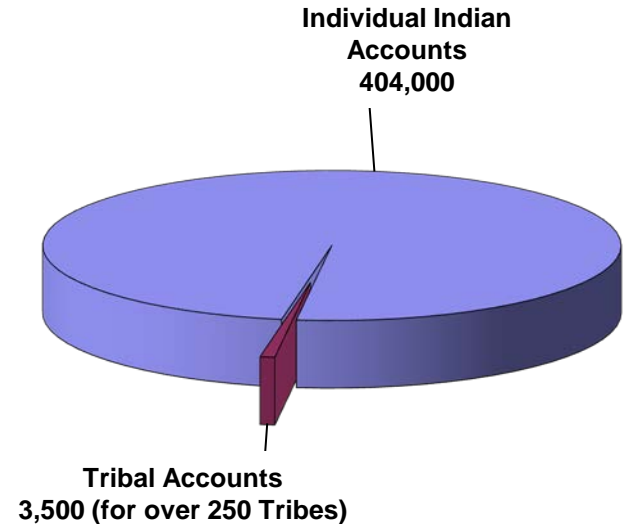
- Investment Services and Resources
- Portfolio review and management
- Portfolio accounting
- Portfolio analytics
- Formal compliance reviews
- Bloomberg market information system
- Access to primary and secondary dealers

Office of Trust Funds Investments

Monetary Trust Assets as of 9/30/17



Trust Accounts Under Management as of 9/30/17



Office of Trust Funds Investments

Market Information

Graph of the Federal Open Market
Committee Decisions

Yield Graph of the U.S. Treasury 10 Year Bond

Annual U.S. Treasury Yield Curve Comparison

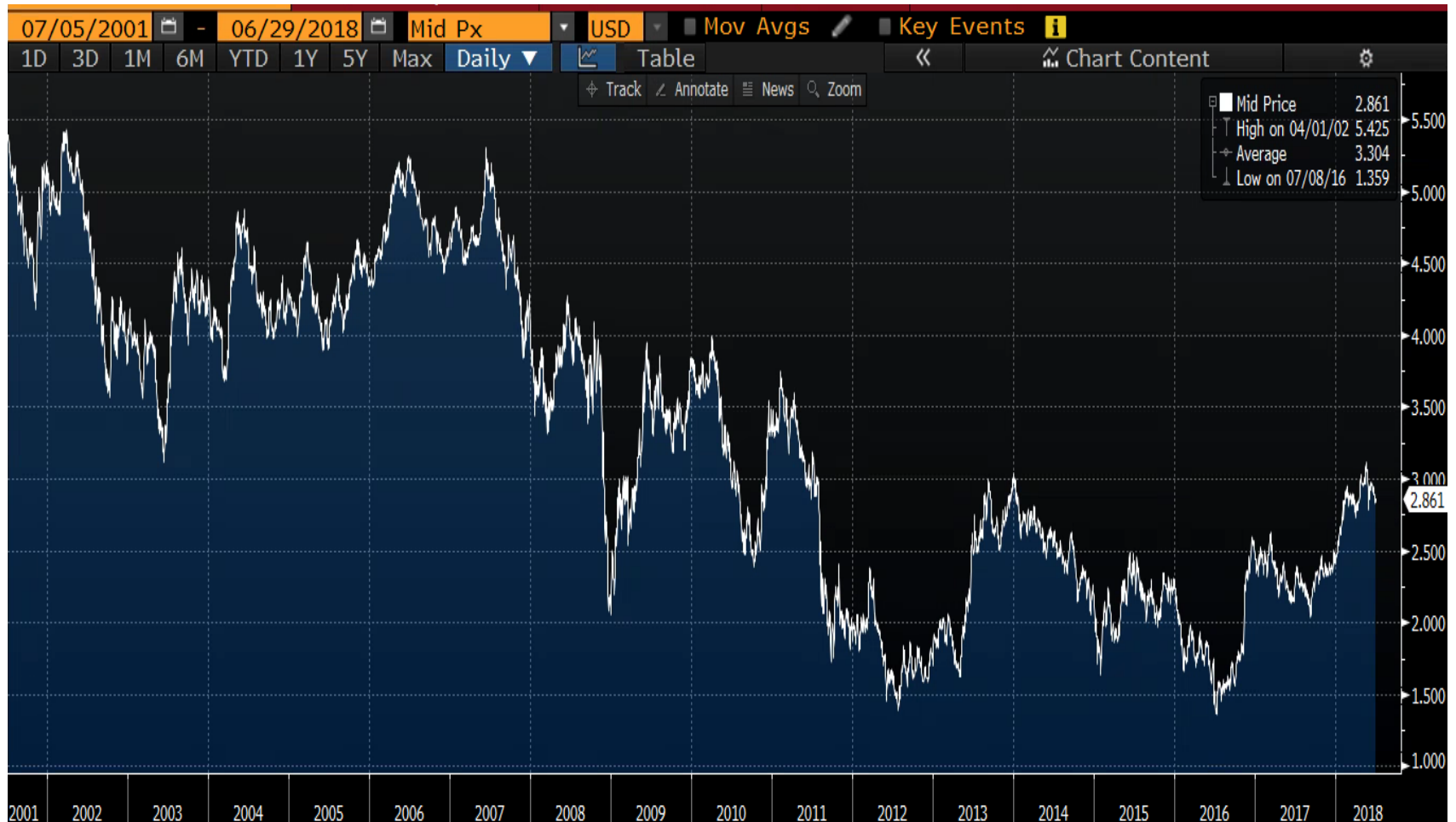
Office of Trust Funds Investments

Graph of the Federal Open Market Committee Decisions



Office of Trust Funds Investments

Yield Graph of the U.S. Treasury 10 Year Bond



Office of Trust Funds Investments

Annual U.S. Treasury Yield Curve Comparison

