

Midwest Region Forest Development Program

**Partners In Action Conference
Potawatomi Casino and Hotel**

Milwaukee, WI

July 17-19, 2018

**Forest Development Forester
Midwest Regional Office, Bloomington MN 55437**

- **§ 163.32 Forest development.**

- Forest development pertains to forest land management activities undertaken to improve the sustainable productivity of commercial Indian forest land.
- The program consists of reforestation, timber stand improvement projects, and related investments to enhance productivity of commercial forest land with emphasis on accomplishing on-the-ground projects.
- Forest development funds will be used to re-establish, maintain, and/or improve growth of commercial timber species and control stocking levels on commercial forest land.
- Forest development activities will be planned and executed using benefit/cost analyses as one of the determinants in establishing priorities for project funding.

Types of FD Projects

- **3.1 General.** Forest Development (FD) program activities are composed of silvicultural treatments and program support activities.
 - Land that is producing, or is capable of producing, crops of industrial wood and is not withdrawn from timber use by statute or administrative regulation Commercial Forest Land from Glossary of Wildland Fire Terminology (2012) by National Wildfire Coordinating Group (Commercial includes Tribal Traditional forest product uses, Benedict & Emery 2018)
- **3.2 Silvicultural Treatment Activities.** Site preparation;
 - reforestation; and commercial forest stand improvement (CFSI).
- **A. Site Preparation.** These methods are further divided into:
 - mechanical methods (mechanized and hand treatments); prescribed fire; and chemical methods of site preparation.
- **B. Reforestation.** Promotion of natural regeneration includes seed collection, direct seeding, seedling production and care, and tree planting methods;
 - regeneration methods; regeneration evaluation and monitoring, including survey methods; plantation maintenance; and limited access road repair.
- **C. CFSI.** Types of projects;
 - pre-commercial thinning, understory sanitation, prescribed burning, pruning, release cuttings, and fertilization; and the coordination of projects with other facets of the program, e.g., timber sales, fuels management, and other natural resources.

[Forest Development Handbook September 2006idc008870.pdf](#)

[2006 Forest Development Manual Part 53 Chapter 5.pdf](#)

FD Projects

- **4.3 Methods of Site Preparation.** For the purposes of this handbook, site preparation methods will be grouped into three principle categories: mechanical, prescribed fire, and chemical.
 - 1. Mechanized Site Preparation
 - 2 Hand Site Preparation
 - 3. Prescribed Fire:
- **N. Can hazardous fuels funding be used for treating FD project slash? Yes in specific instances.**
 - With some advance planning, to cost-share thinning projects and their resulting slash/fuel treatment with the hazardous fuels reduction programs (both wildland urban interface (WUI) and Non-WUI) that are managed by the BIA National Interagency Fire Center (NIFC). It should be NOTED that these programs cannot be used exclusively for the treatment of activity fuels.
- Refer to *Chapter 6.6C* of this *Handbook Volume* for more information.

Annual Reporting

- Memos for Forestry Reporting are sent to the Regions in Late August or early September from Central Office for annual reporting deadlines.
- New for FY 18
 - Second Year for reporting in FIRST
 - New FD Update Spreadsheets
 - Updated Instructions
 - Formulas are protected
 - All values are reported as the actual value: i.e. Dollars
 - The Accomplishment Spreadsheet has drop down lists for Type and Metrics
 - [Draft Updated 9-28-17 Illustration 1 - FD Planned projects.xls](#)
 - [Draft Updated 10-4-17 Illustration 2a Accomplishment and 2b - Inventory.xls](#)

Forest Development Requests and Accomplishments FIRST

Planned and Accomplishments & Inventory Spreadsheets are still required, even with the new Reporting Application Forest Information Statistics & Tracking (FIRST).

The new spreadsheets have improved instructions and protected calculations. Also All funding is in actual dollars instead of Thousands of dollars. This will match what is in FIRST, <https://firstapp.bofrp.solutions/Account/Login>

Final Fixes and enhancements for FIRST should be ready by September.

The following slides show FD funding and Carry Over Trends for 2007-2017.

NOTE: Due to delays with Central Office finding a permanent home for FIRST year end reports and funding requests may have to be submitted to the region and central office using spreadsheets this year.

Commercial Timber Sale Activity 2009 MRO Spreadsheet

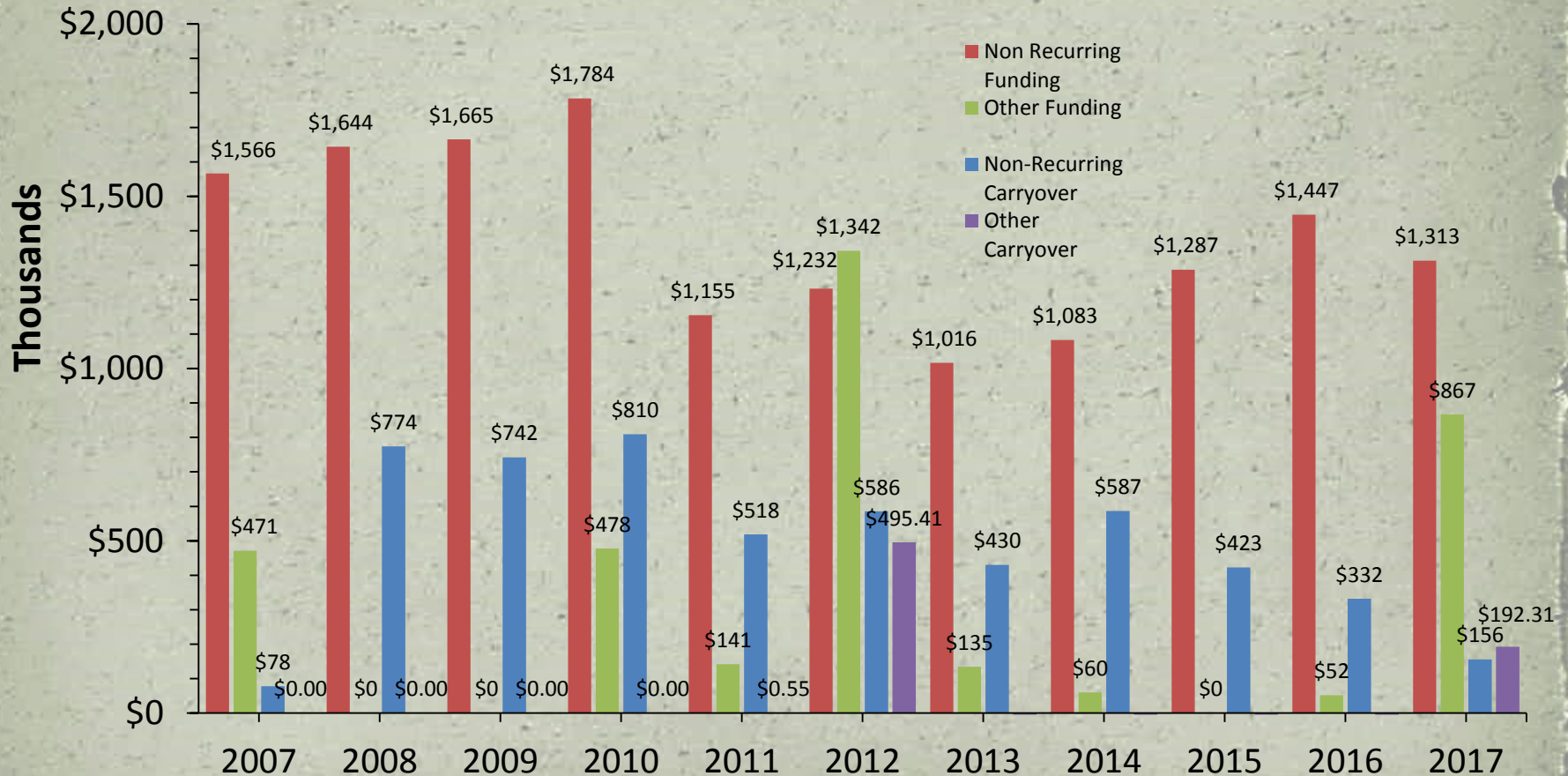
This is the spreadsheet created by Midwest Region in 2009 to report Commercial Timber sales accomplishments. A Regional FD Addendum was written to address collecting Commercial Timber Sales Activity ([Link](#)). The Addendum served to clarify the National Handbook on proper use of FD Non-Recurring Funds.

Since 2014 two of the three Agencies have not used this report and is **no longer** required since it is not a national requirement.

Commercial Timber Sale Activity												
Location or Project Name	Natural	Regeneration	Artificial Regeneration		Precommercial Thinning		Other Projects				Admin. Costs	Carry Over
	Acres	\$M	Acres	\$M	Acres	\$M	Type	Accomp.	Metric	\$M	\$M	\$M
Regional Office												
Upper Sioux												
Lower Sioux												
Sac & Fox												
Shakopee Mdewakanton												
Minnesota Agency												

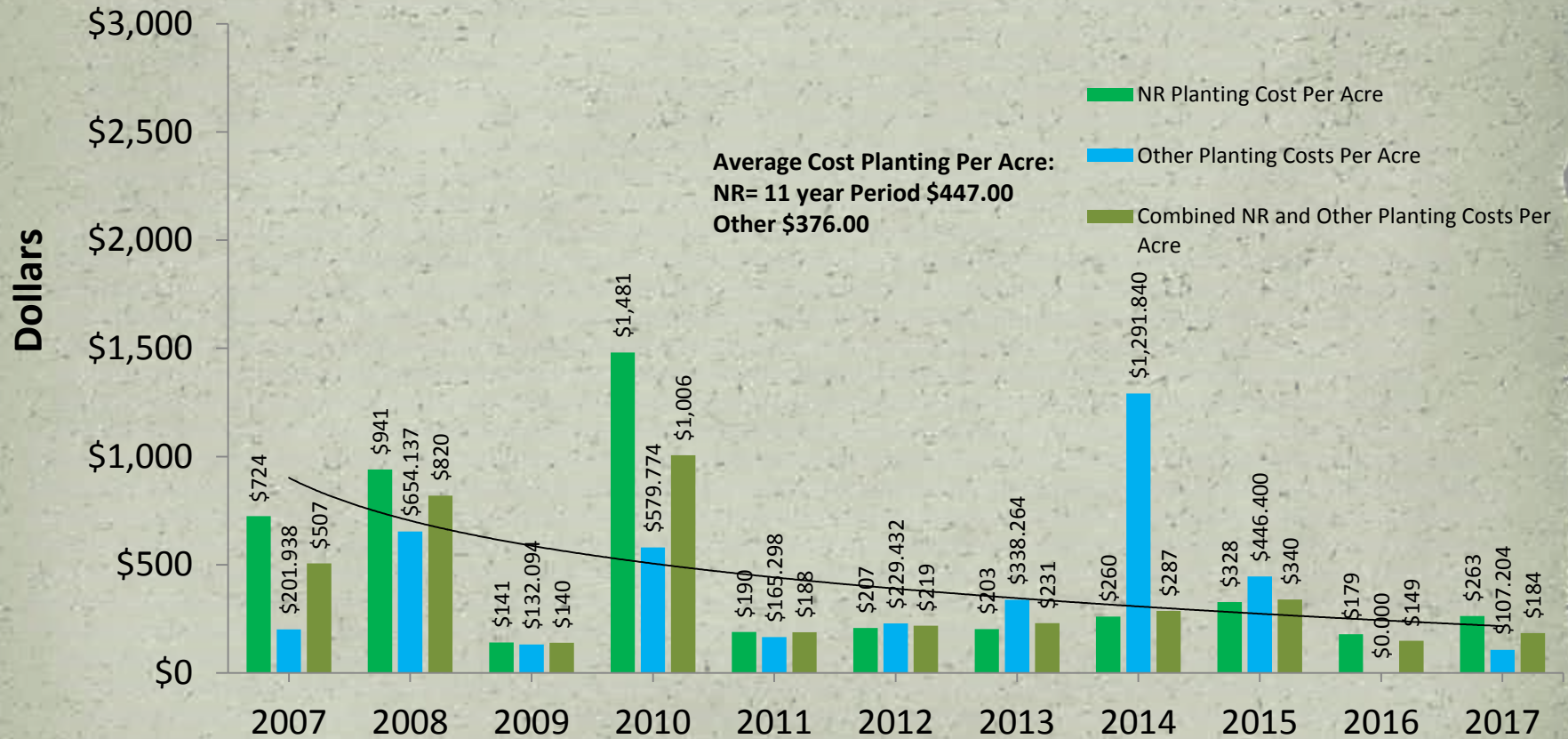
FD Funding Trends

2007-2017 Forest Development Non Recurring , Other Funding



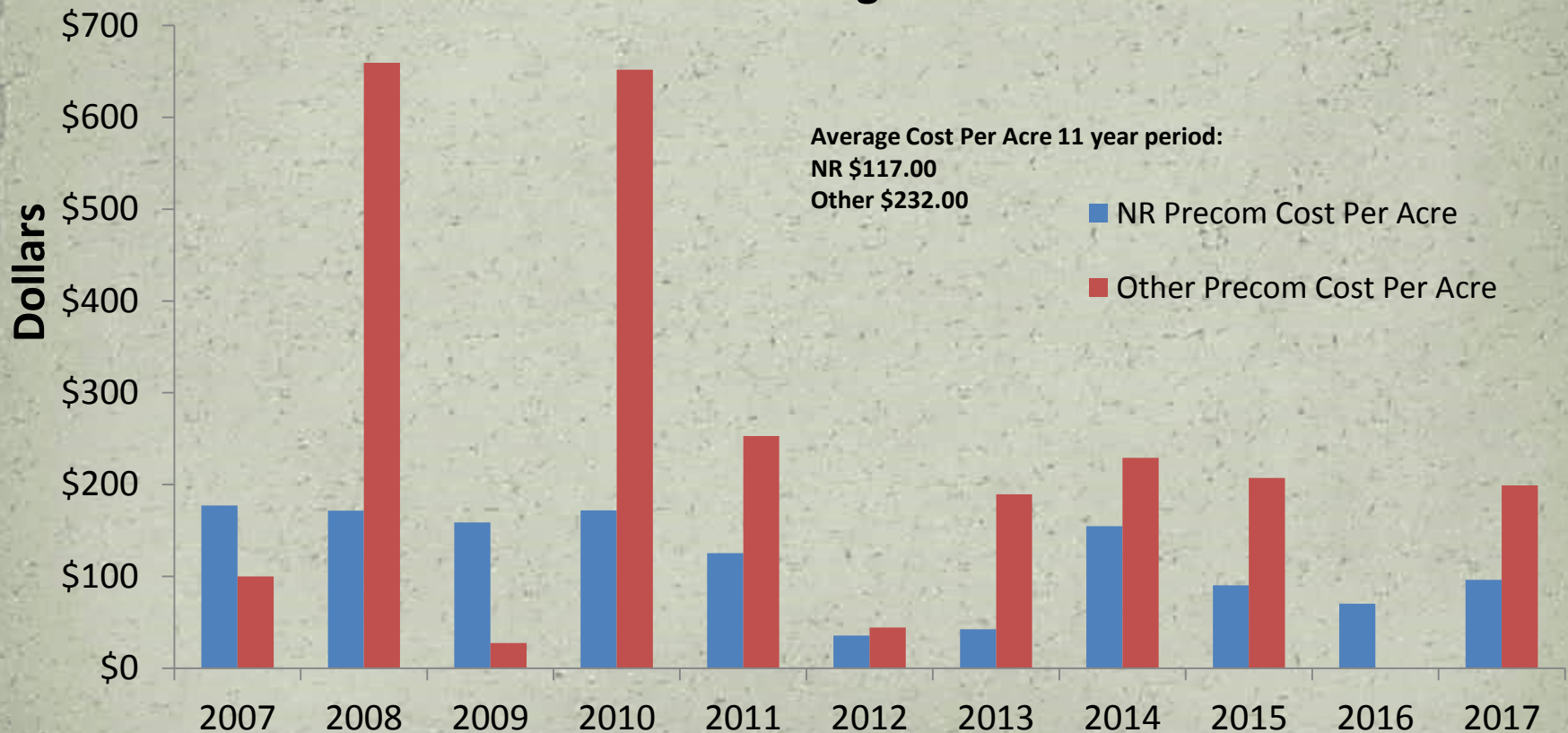
FD Funding Planting Costs/Acre

2007-2017 Planting Cost Per Acre Non-Recurring & Other Funding and Combined Costs Per Acre



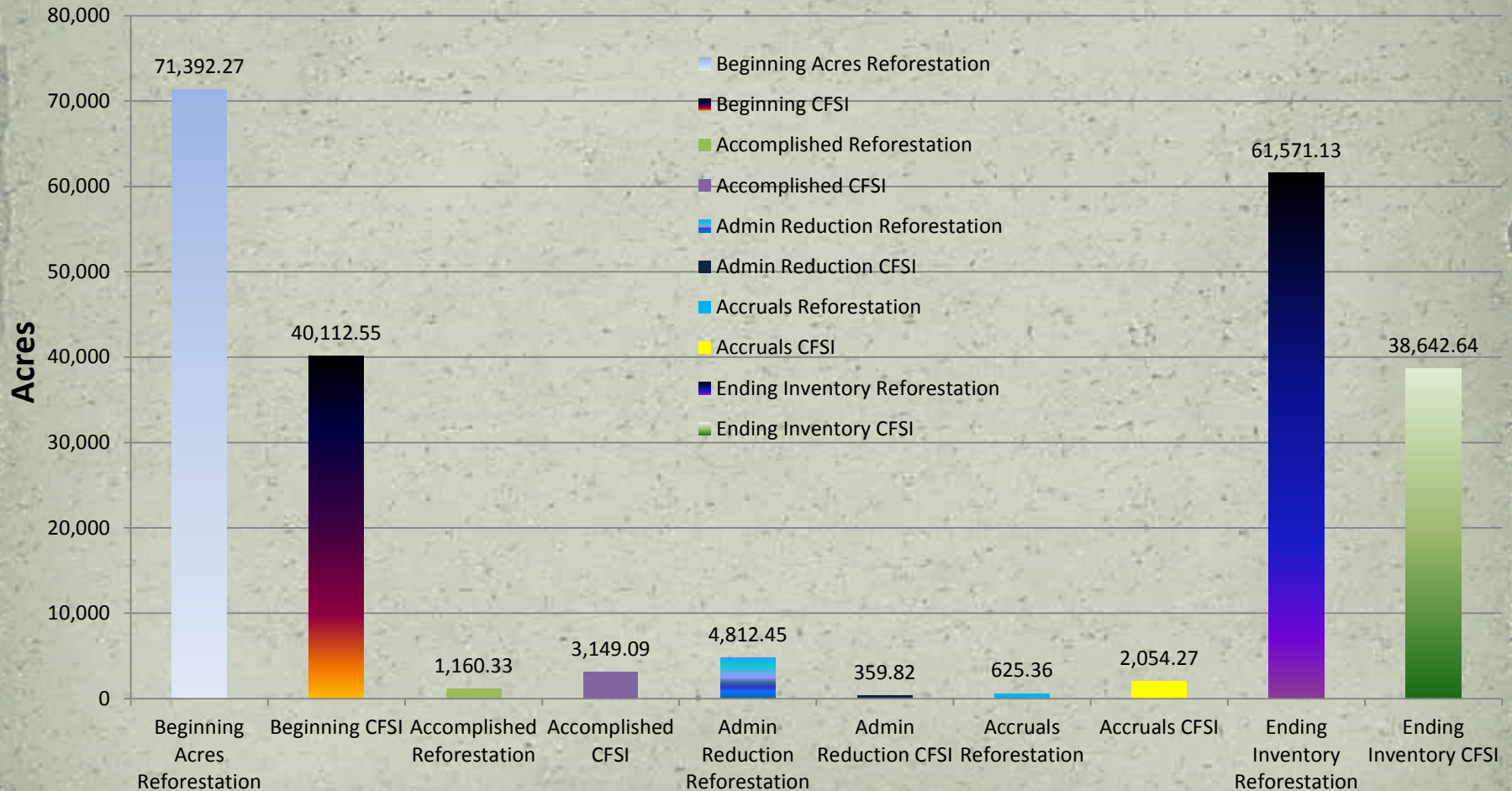
FD Funding Pre-Commercial Thinning Cost/Acre

2007-2017 Non-Recurring & Other Pre- Commercial Thinning Cost Per Acre



FD Inventory 11 Year Average

2007-2017 Inventory 11 Year Average Inventory







??????

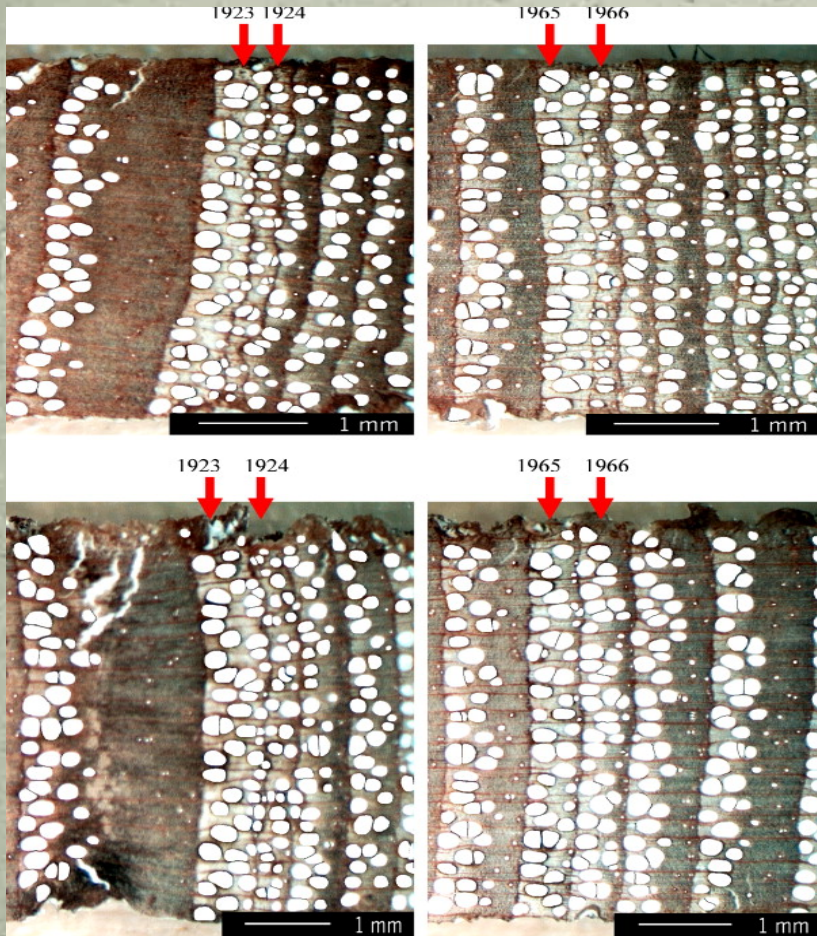


Image Source: Kames, 2009 Thesis,
<https://www.sciencedirect.com/science/article/pii/S1125786510000299?via%3DiHub>

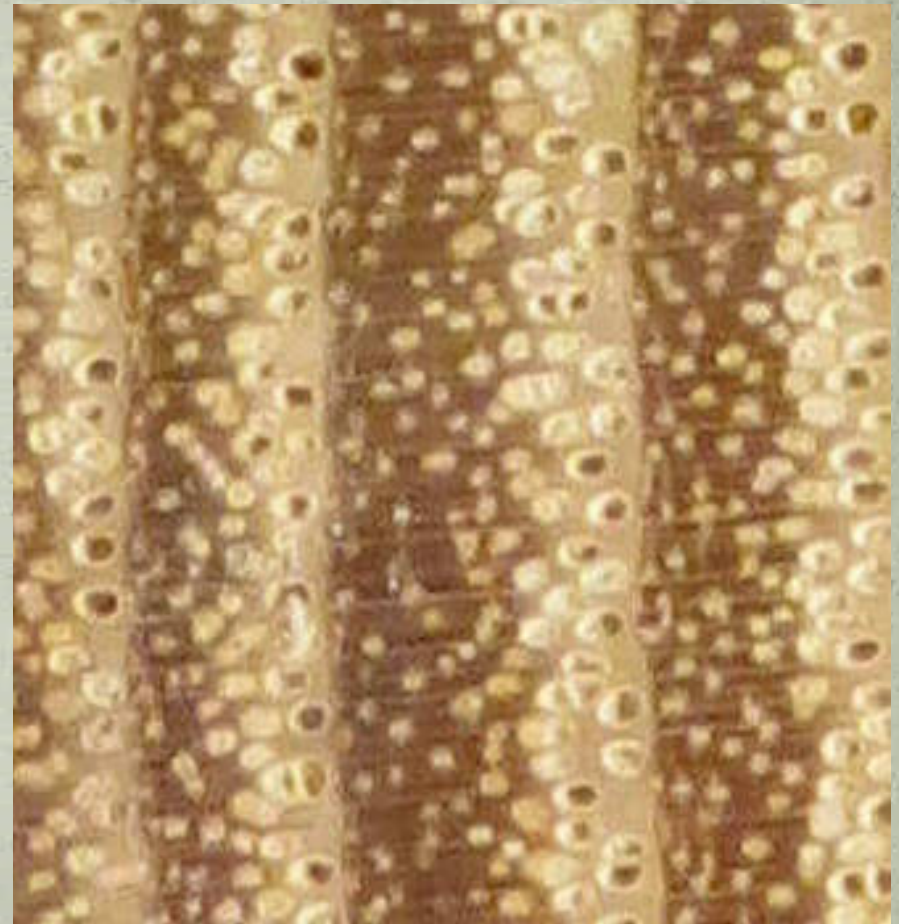


Image Source:
http://www.hobbithouseinc.com/personal/woodpics/_anatomy/ring_porous/ash/_ash.htm