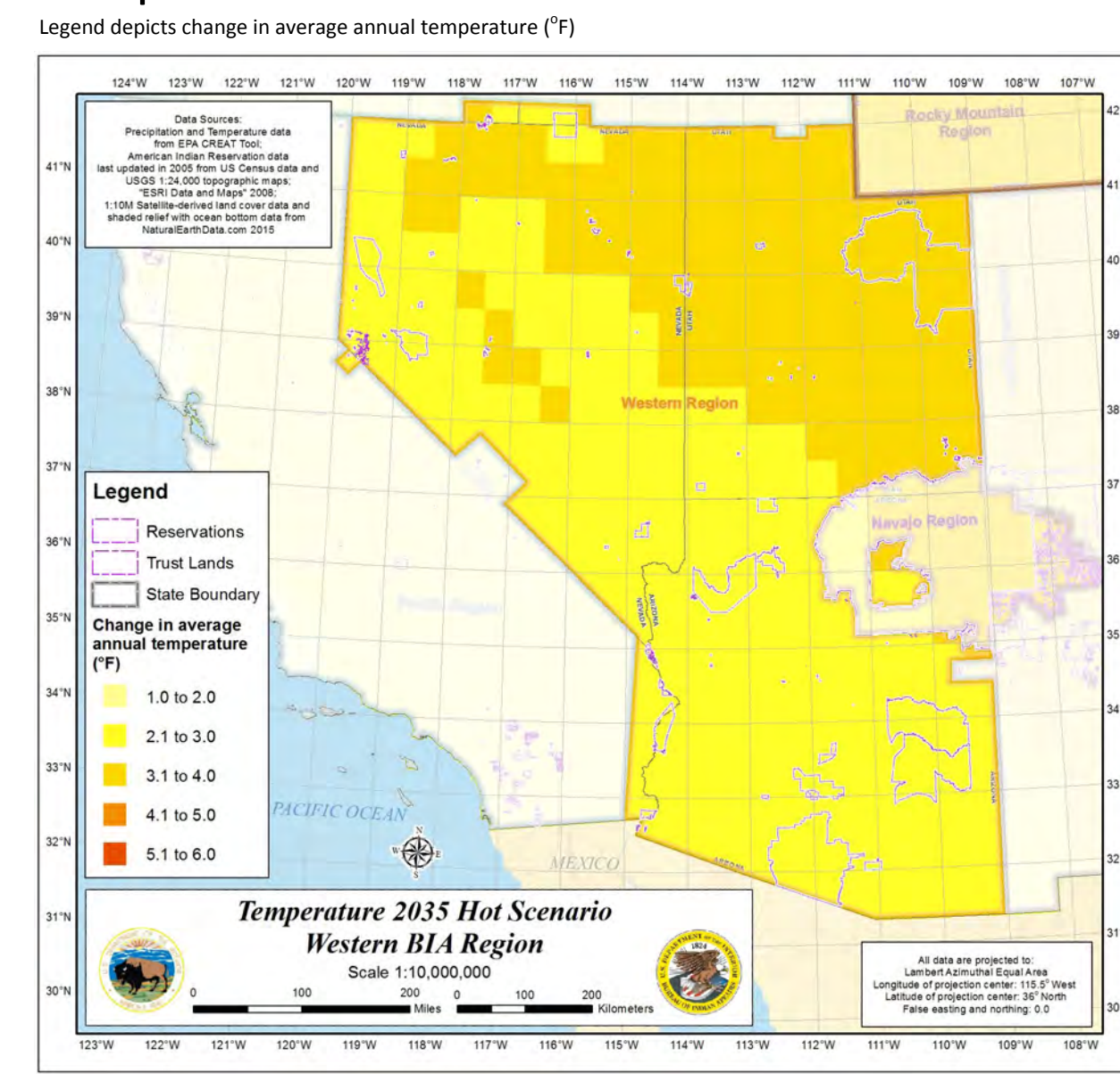
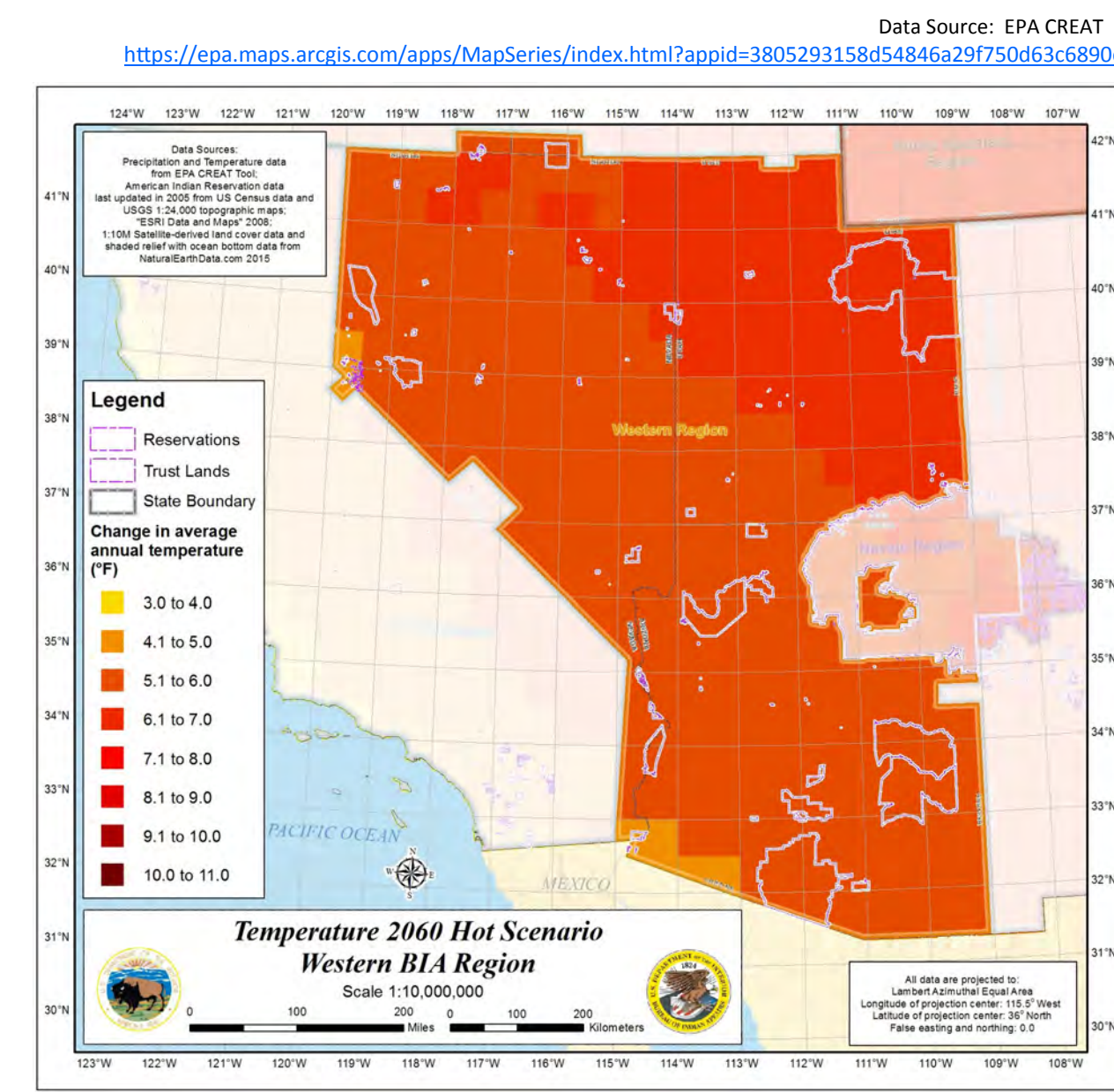


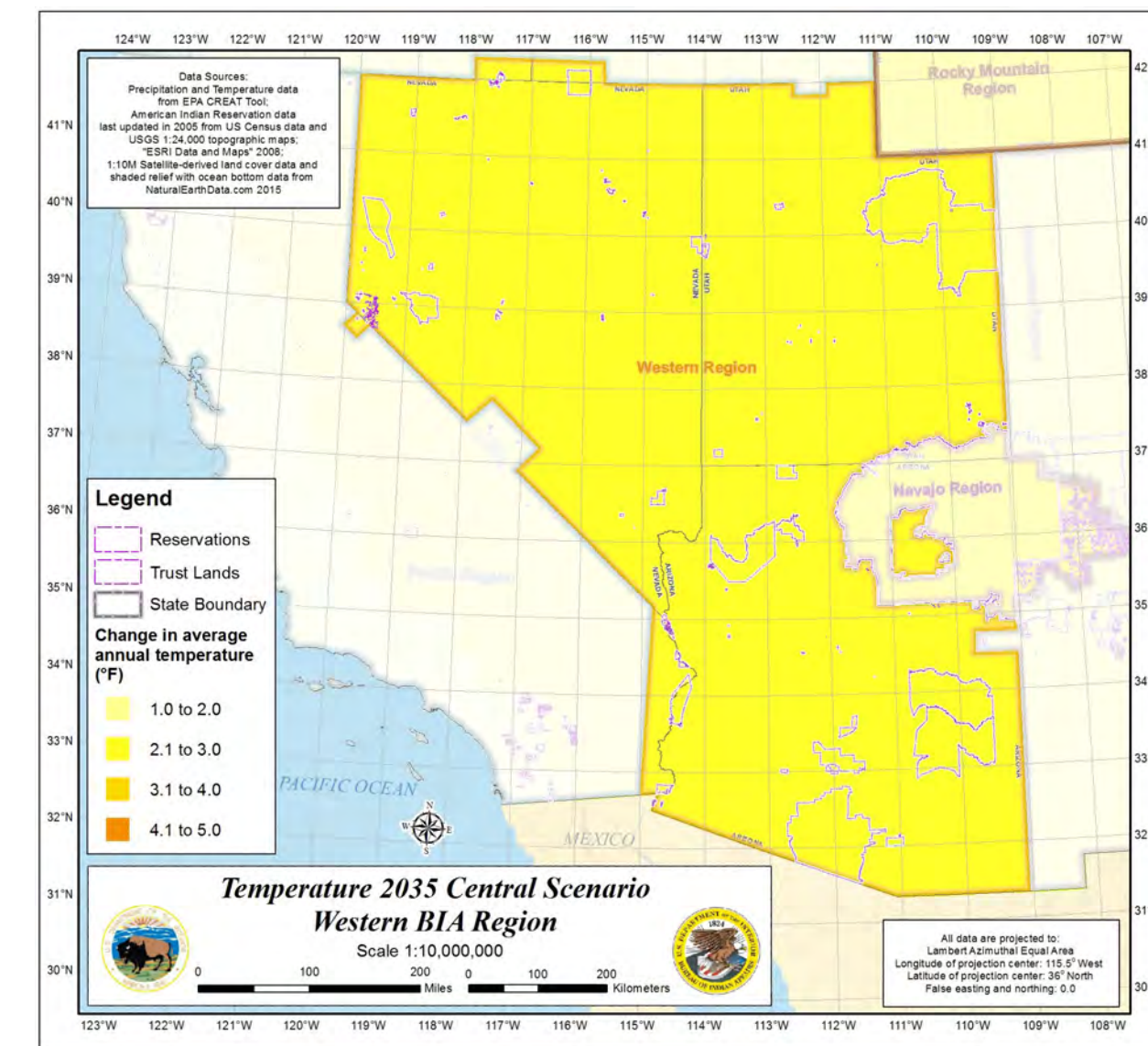
Temperature Scenarios



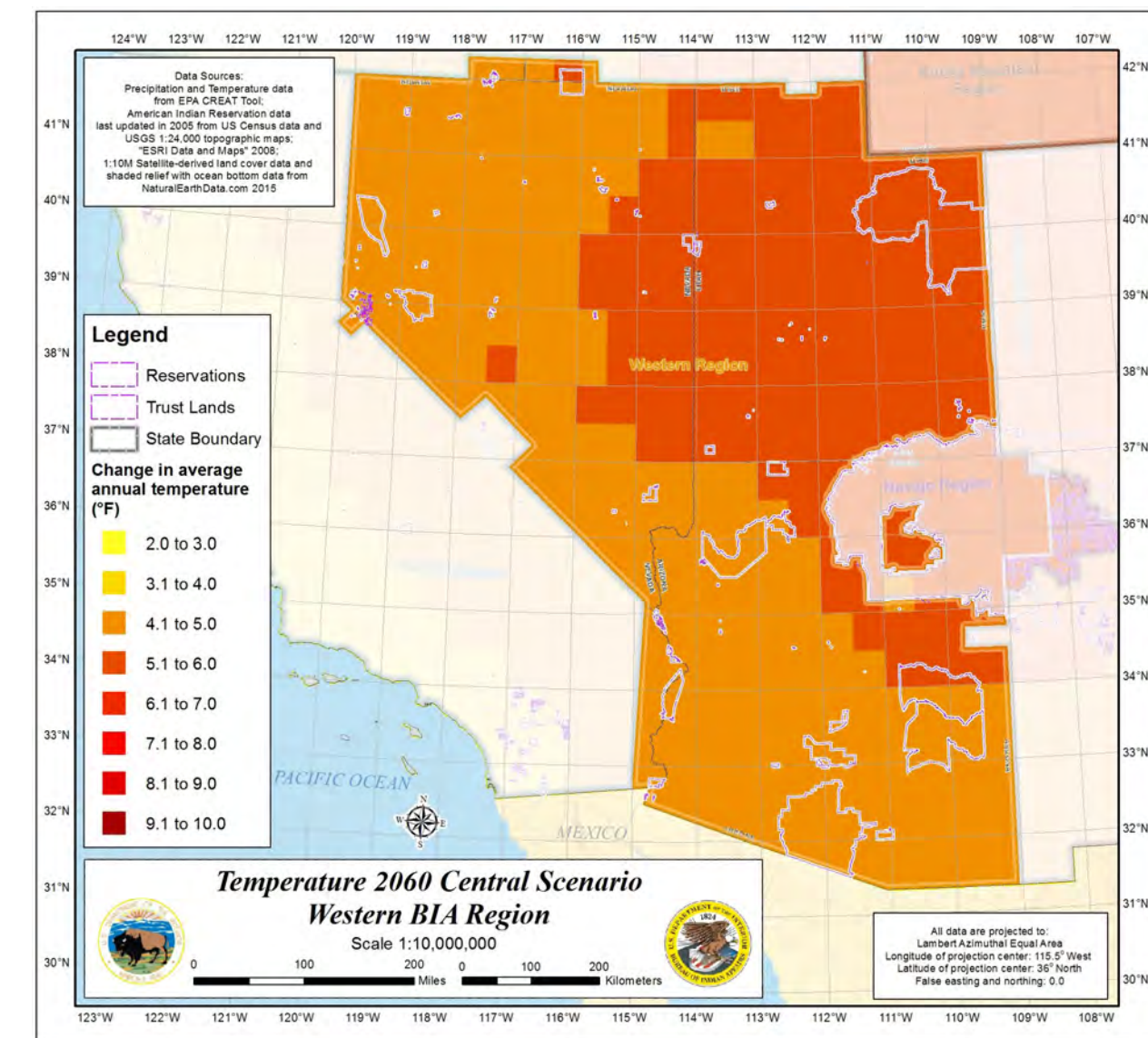
Hot 2035



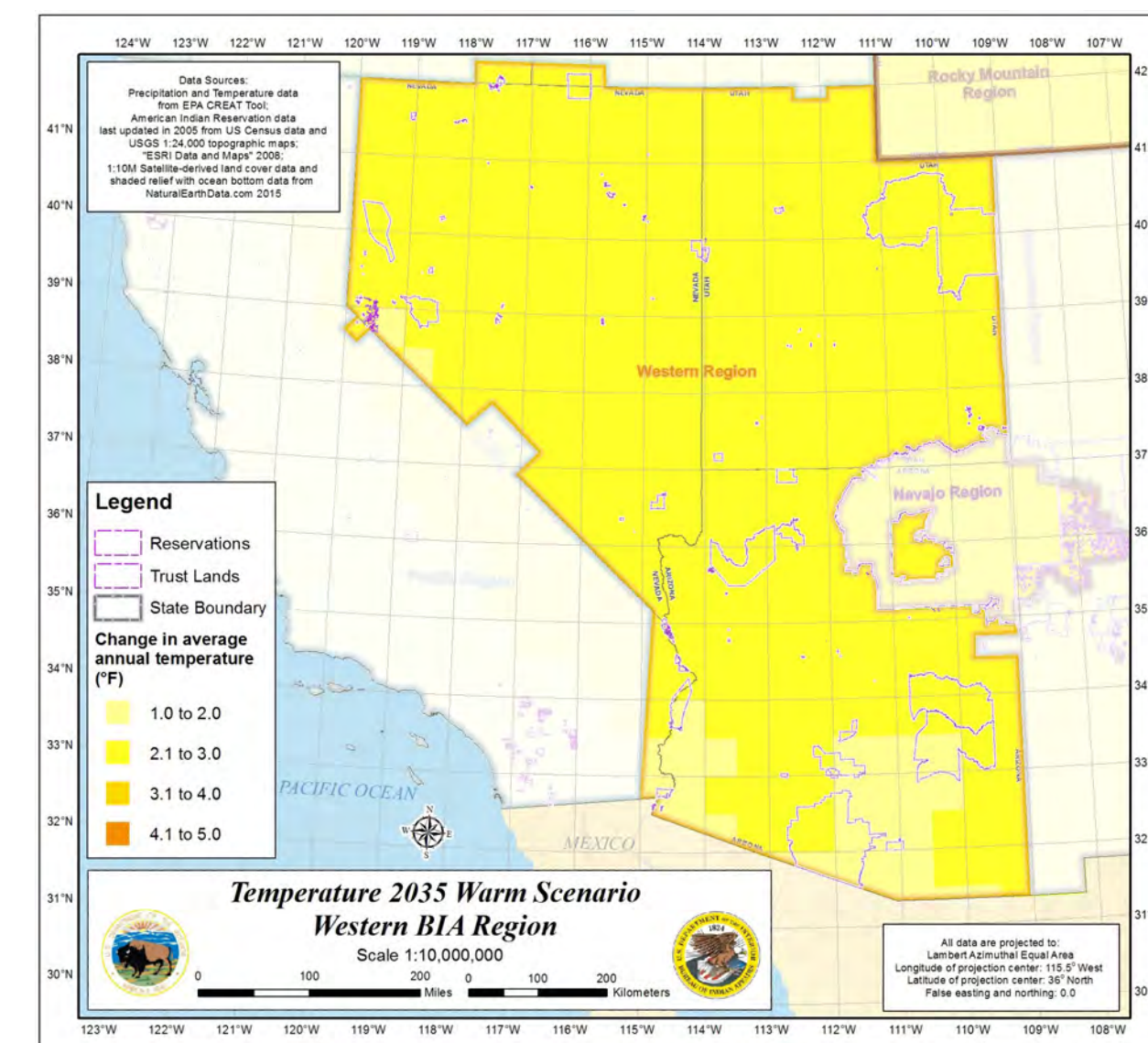
Hot 2060



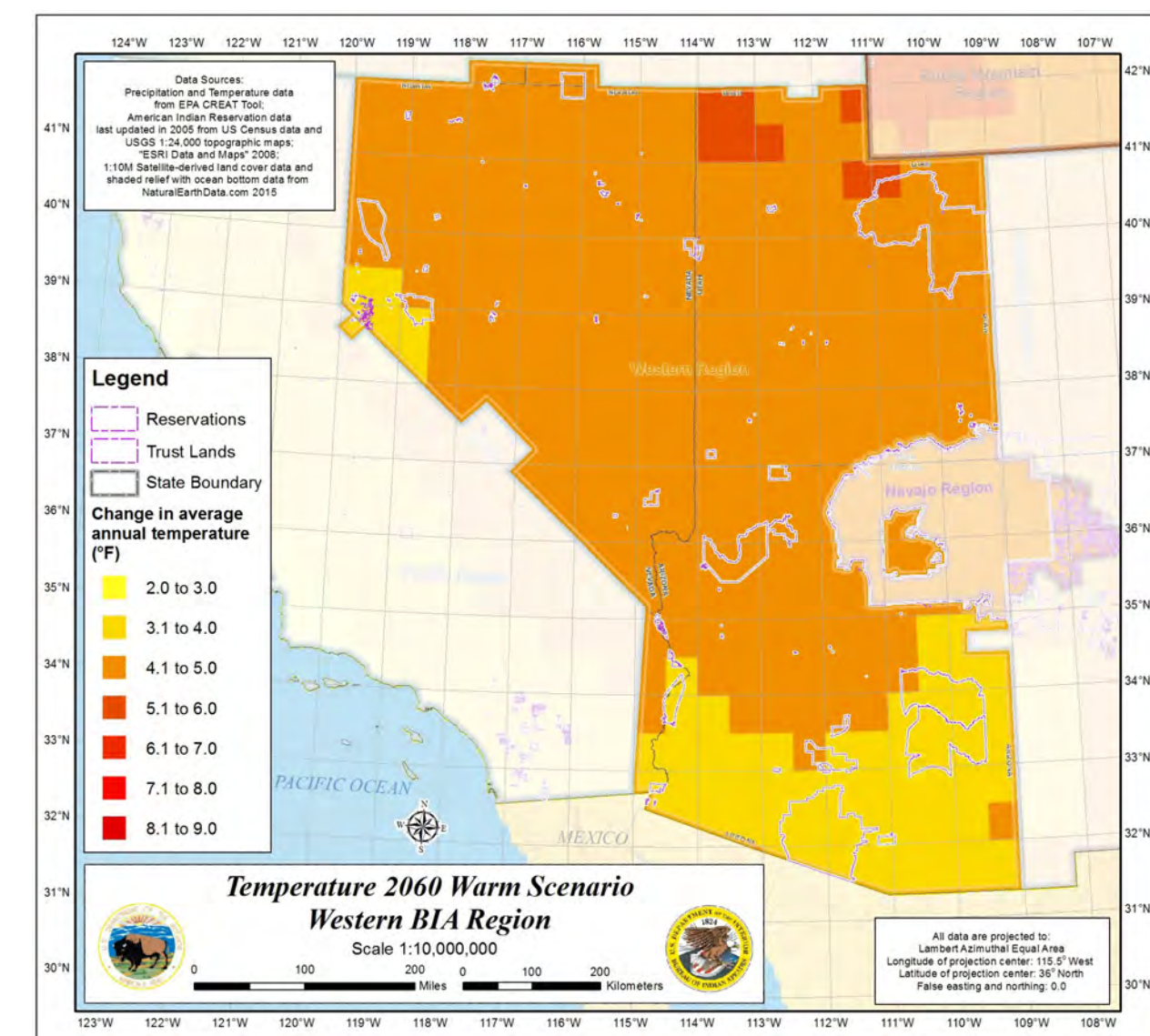
Central 2035



Central 2060



Warm 2035

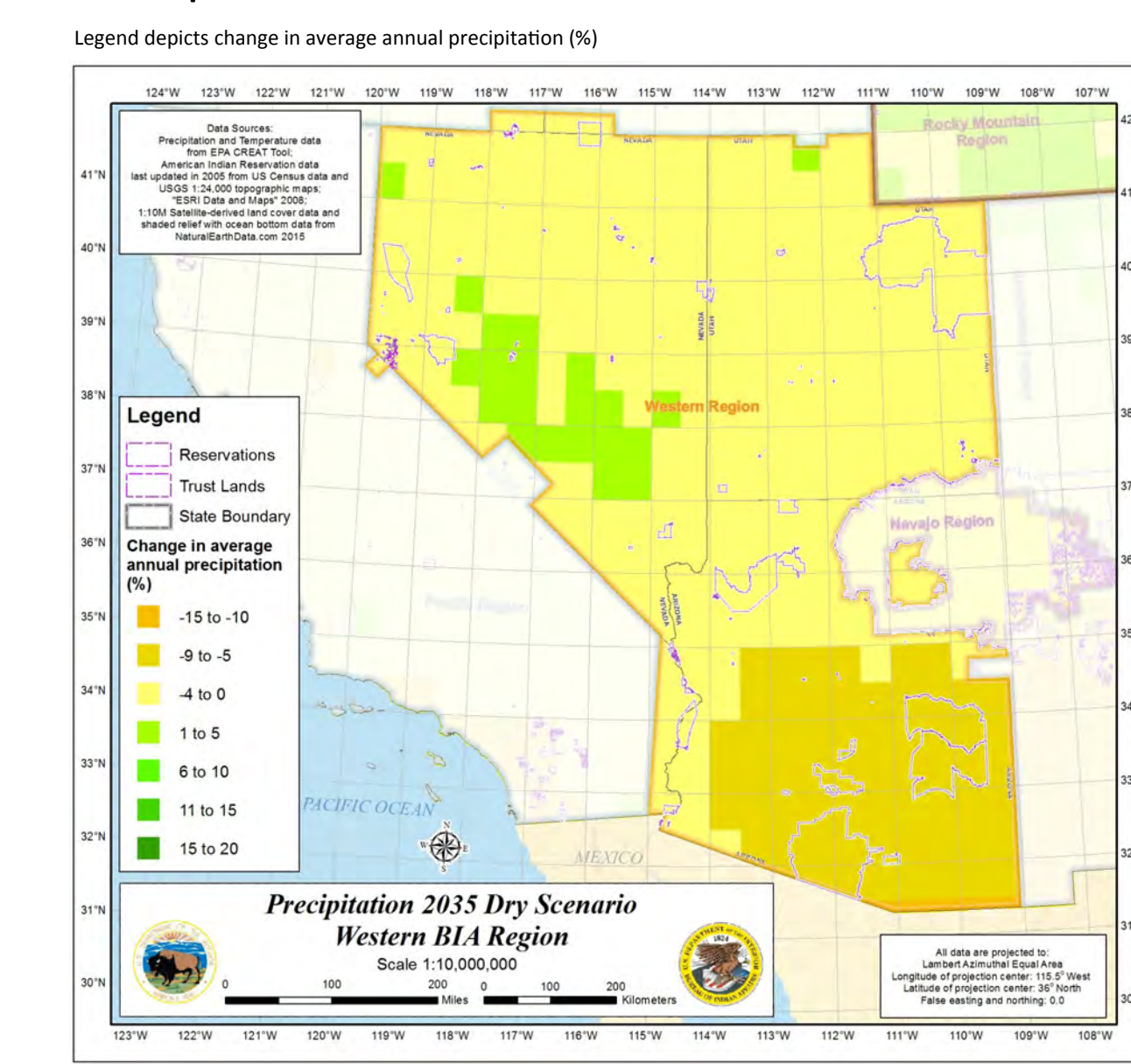


Warm 2060

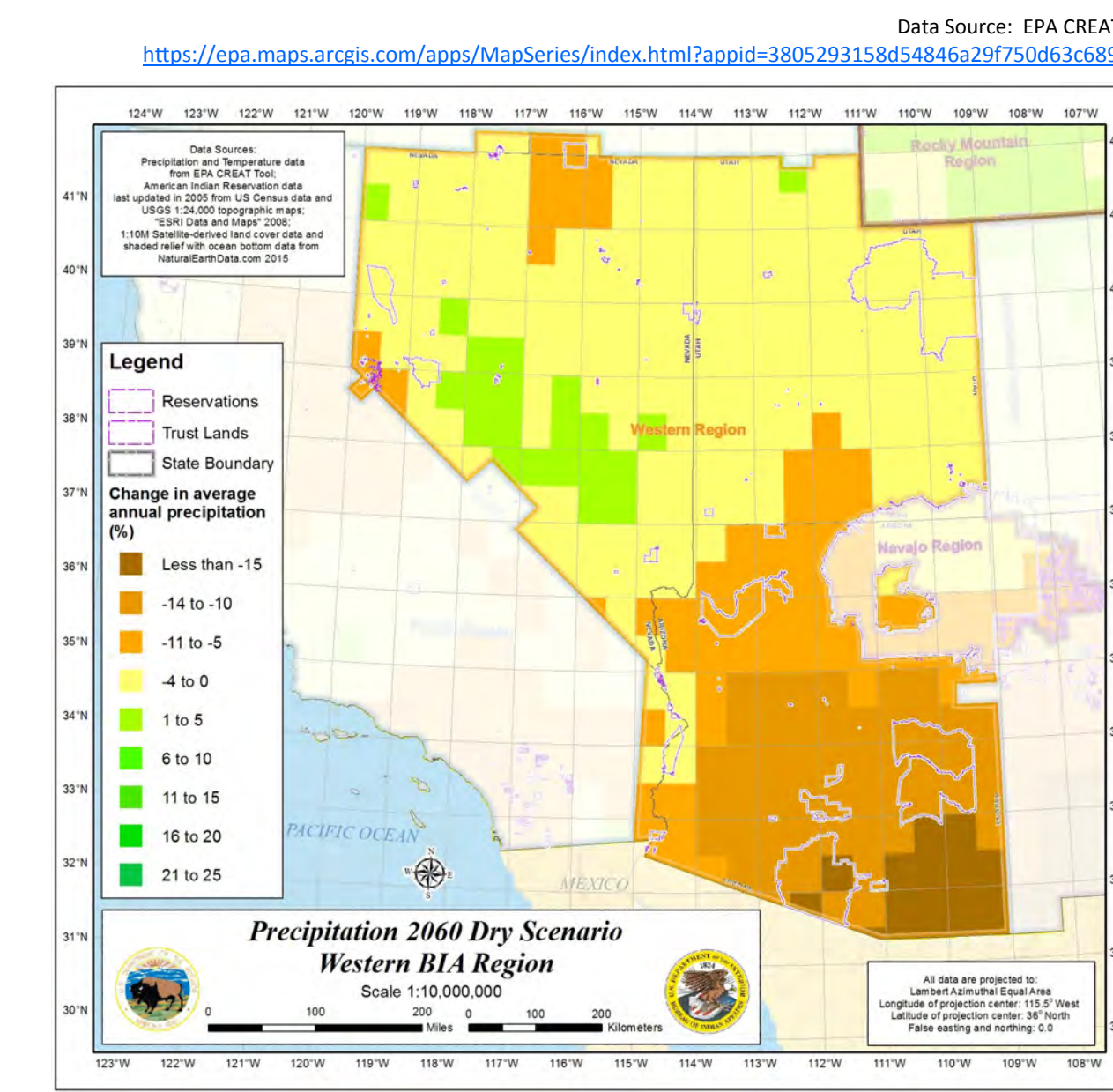
GIS for Tribal Resilience — BIA Western Region



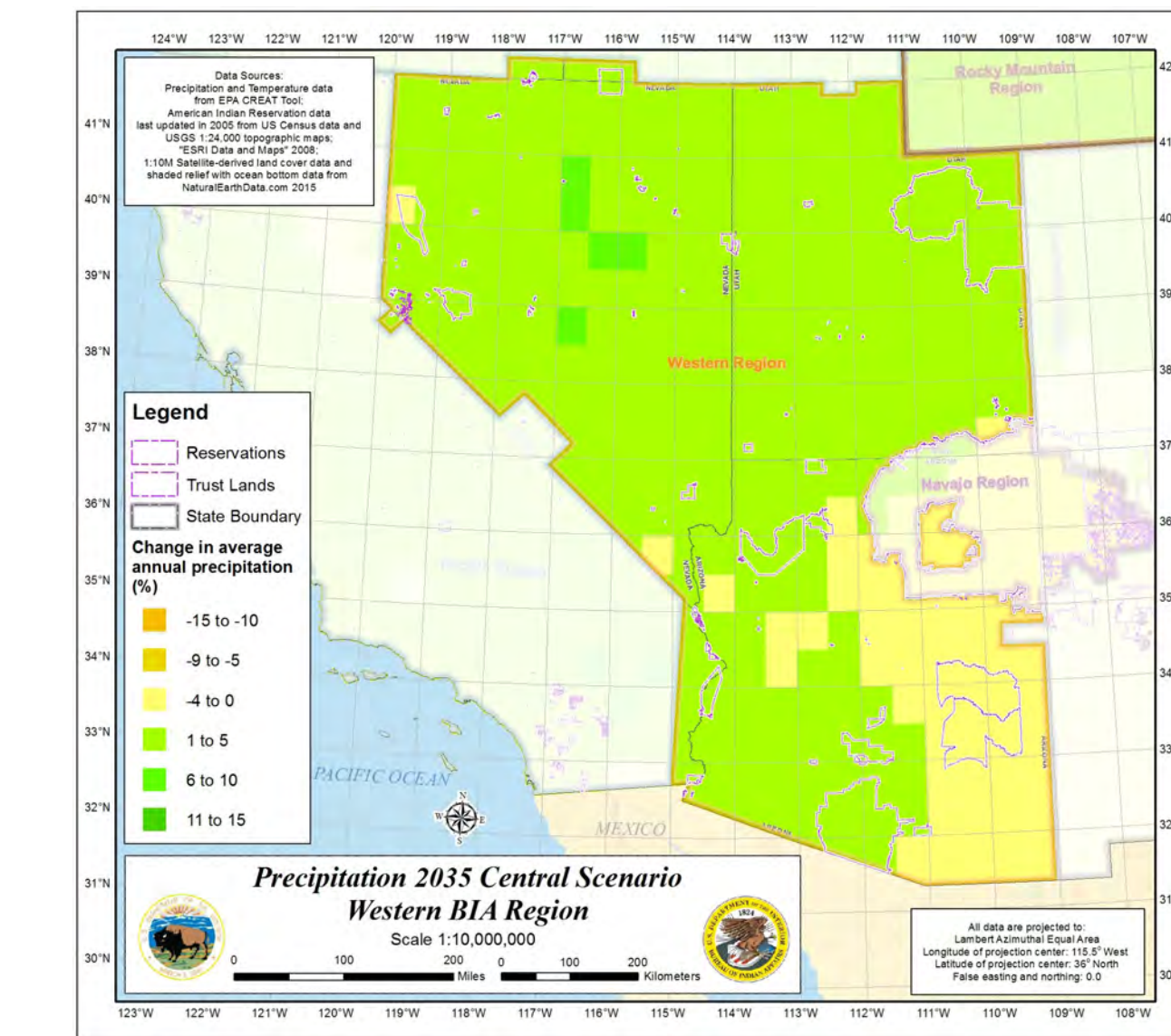
Precipitation Scenarios



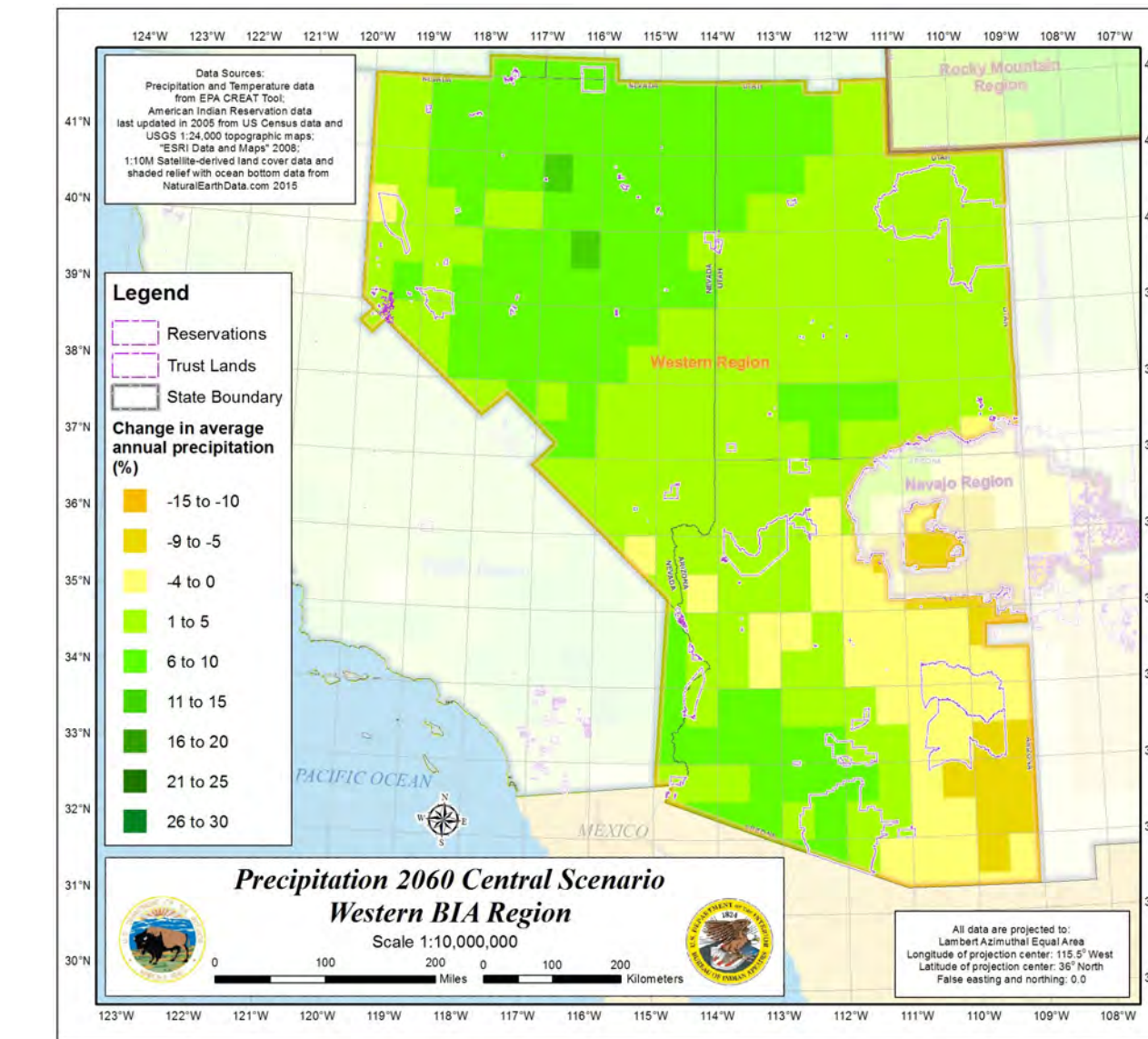
Dry 2035



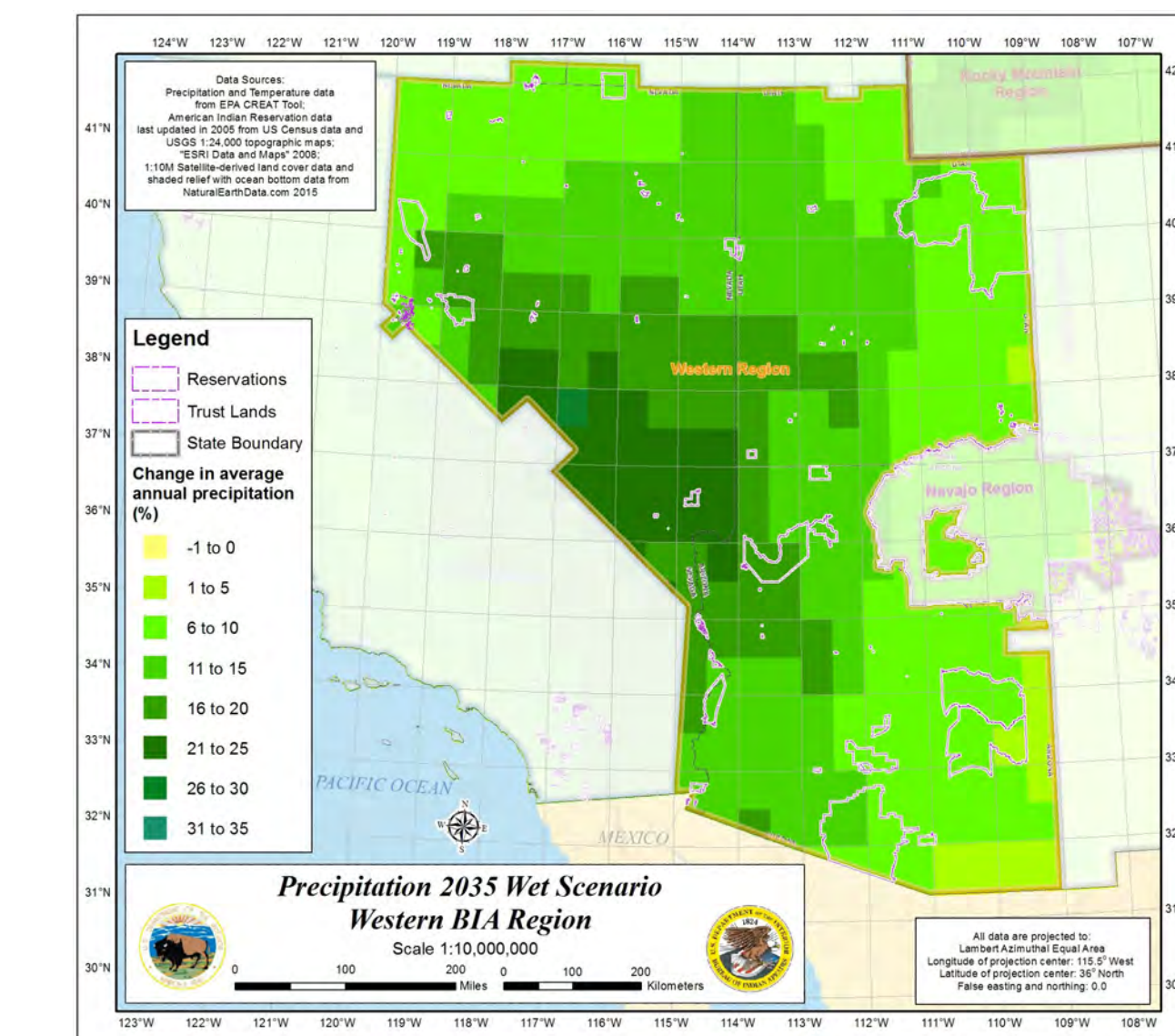
Dry 2060



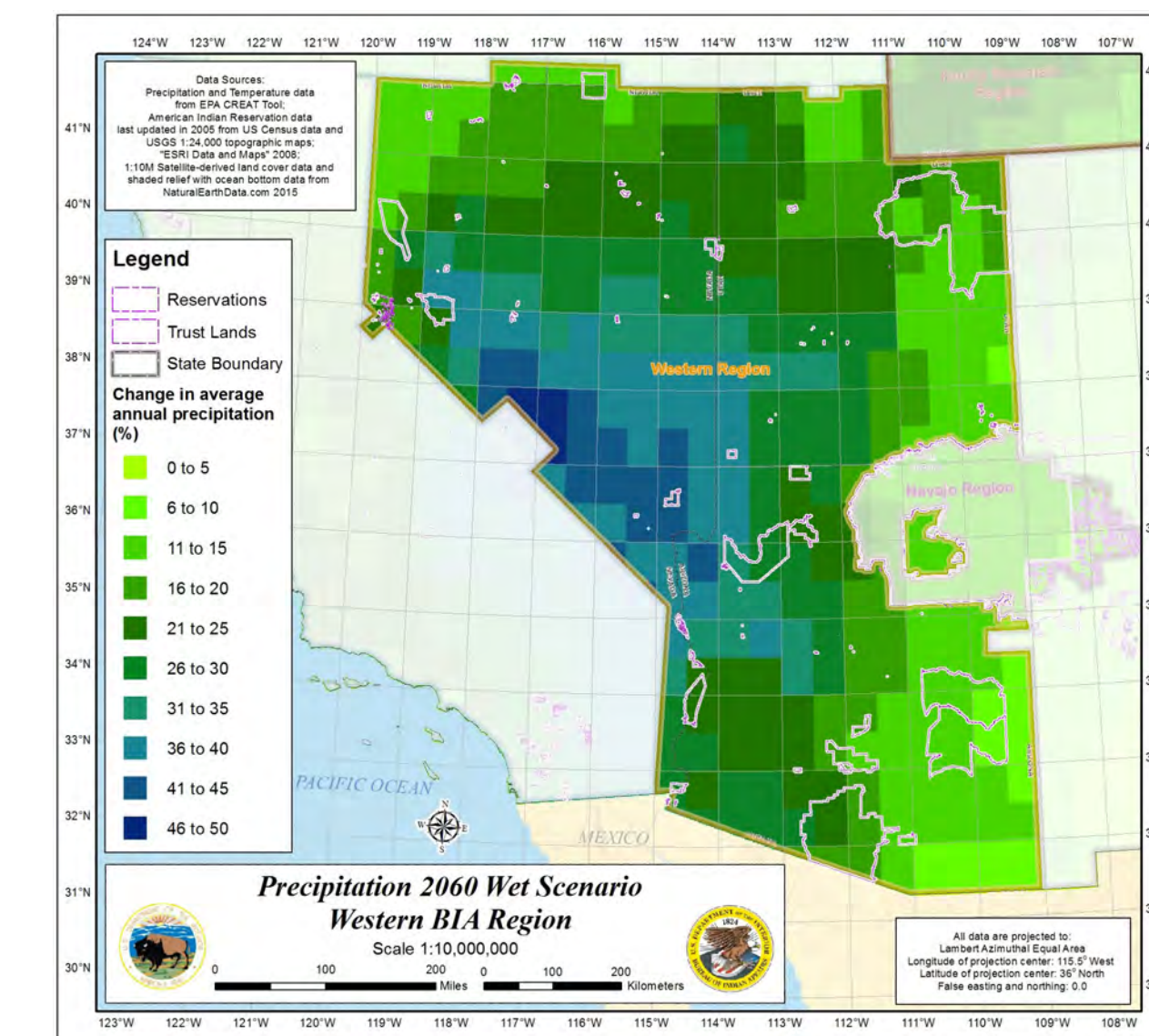
Central 2035



Central 2060

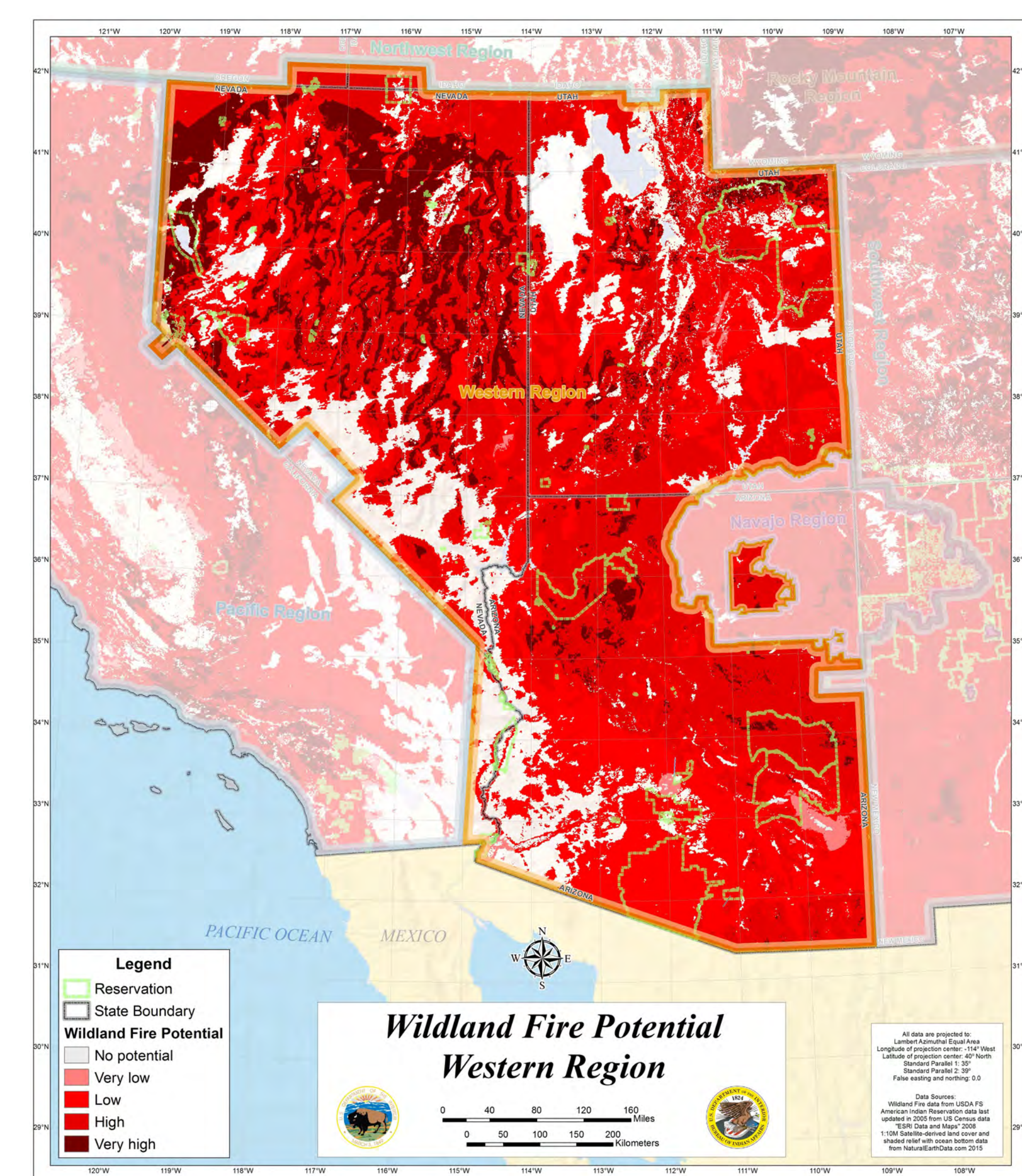


Wet 2035



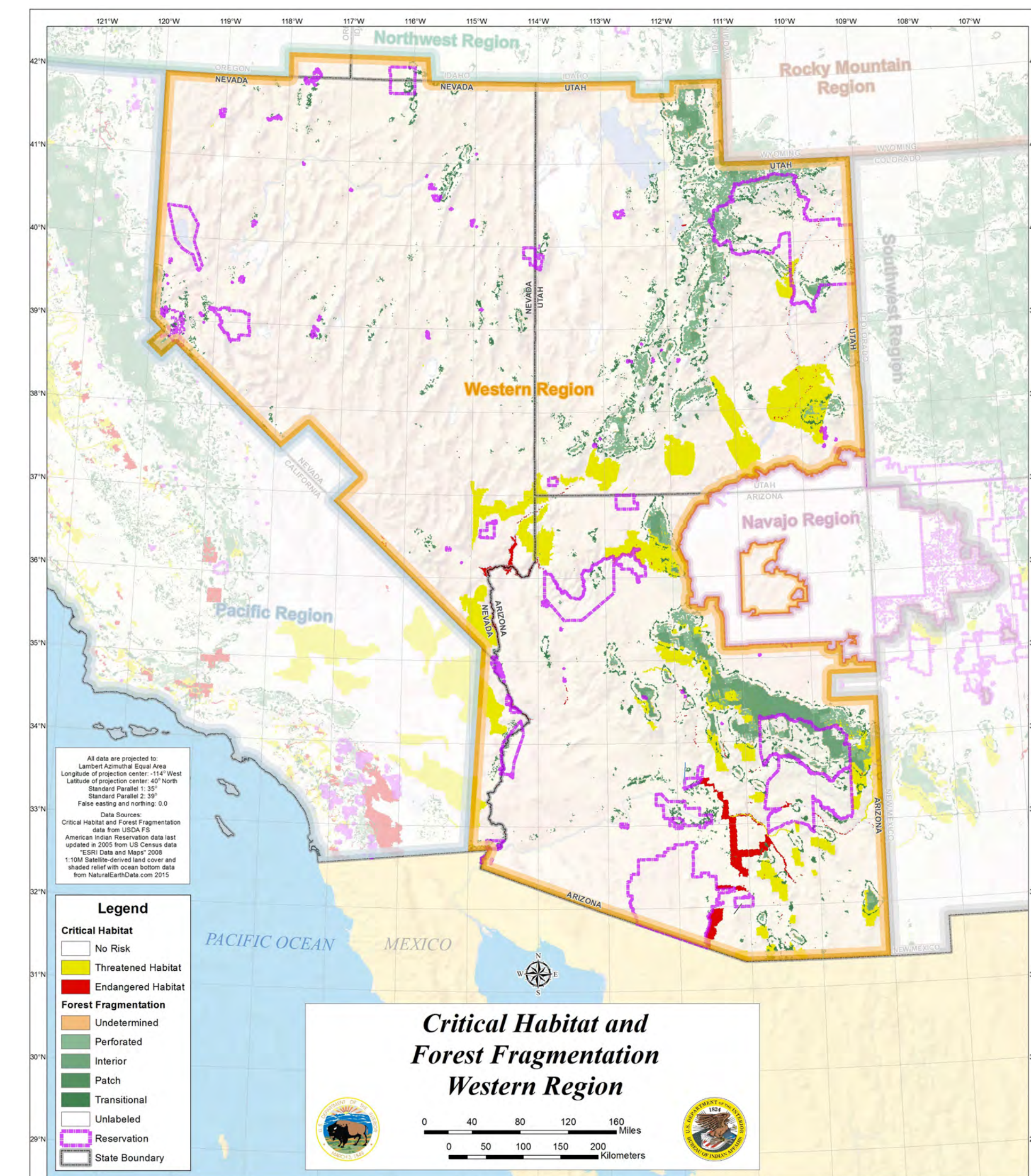
Wet 2060

Wildland Fire Potential



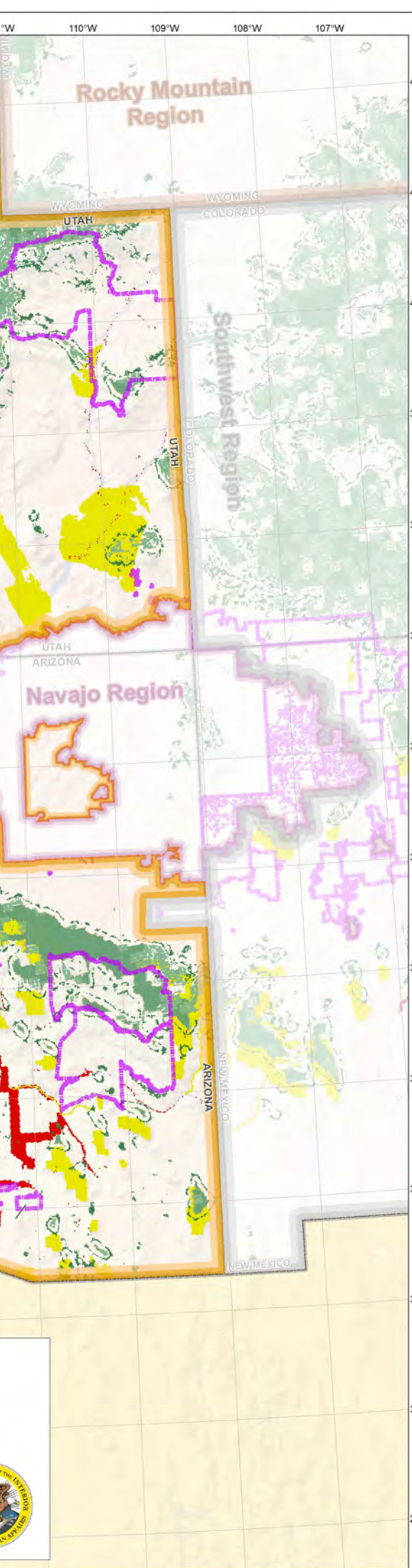
Data Source: USDA FS | <https://data.fs.usda.gov/geodata/shapefiles/private/rotpotential.shp>

Critical Habitat



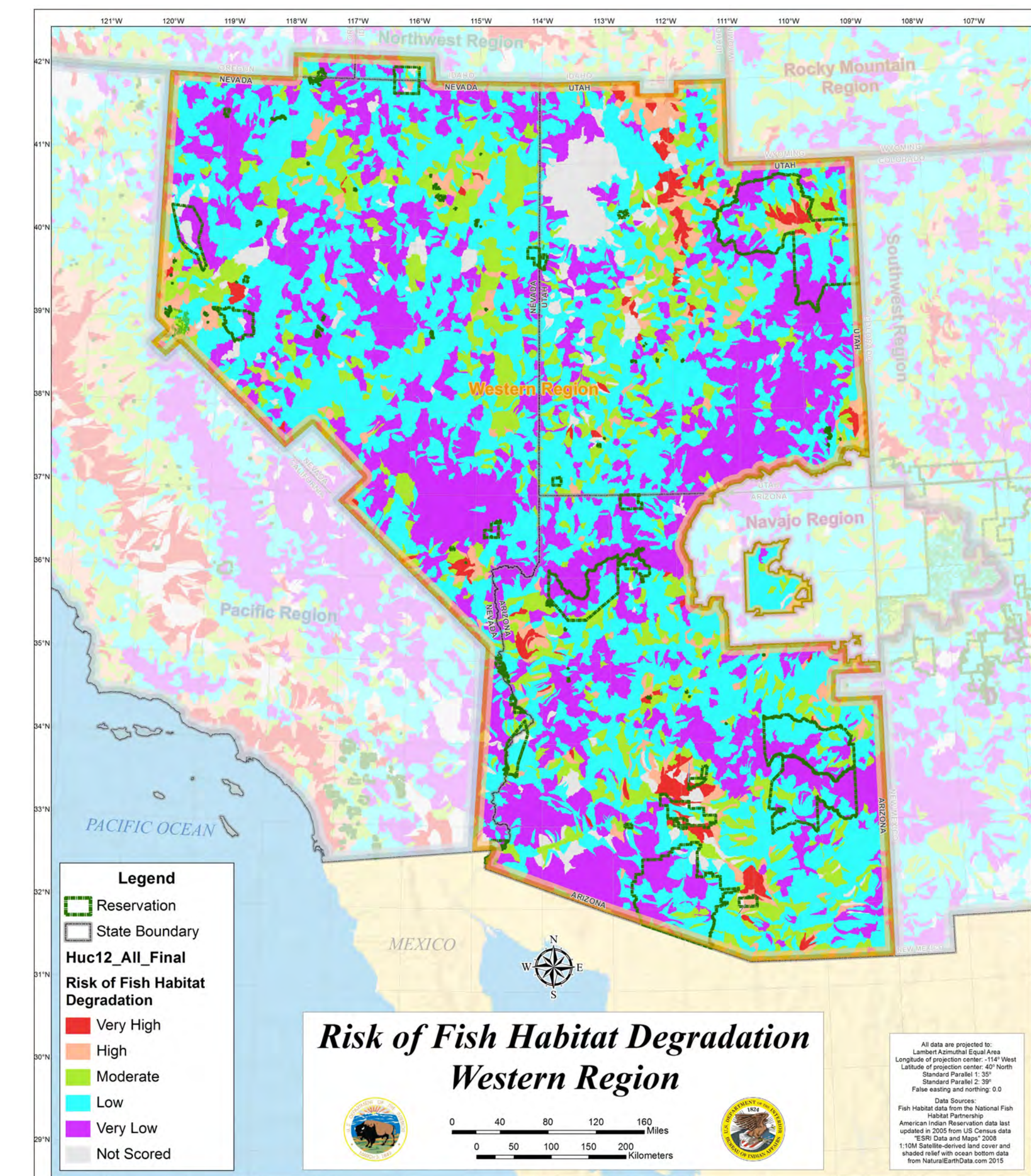
Data Source: USDA FS | <https://data.fs.usda.gov/geodata/shapefiles/private/nationaldata.shp>

Forest Fragmentation



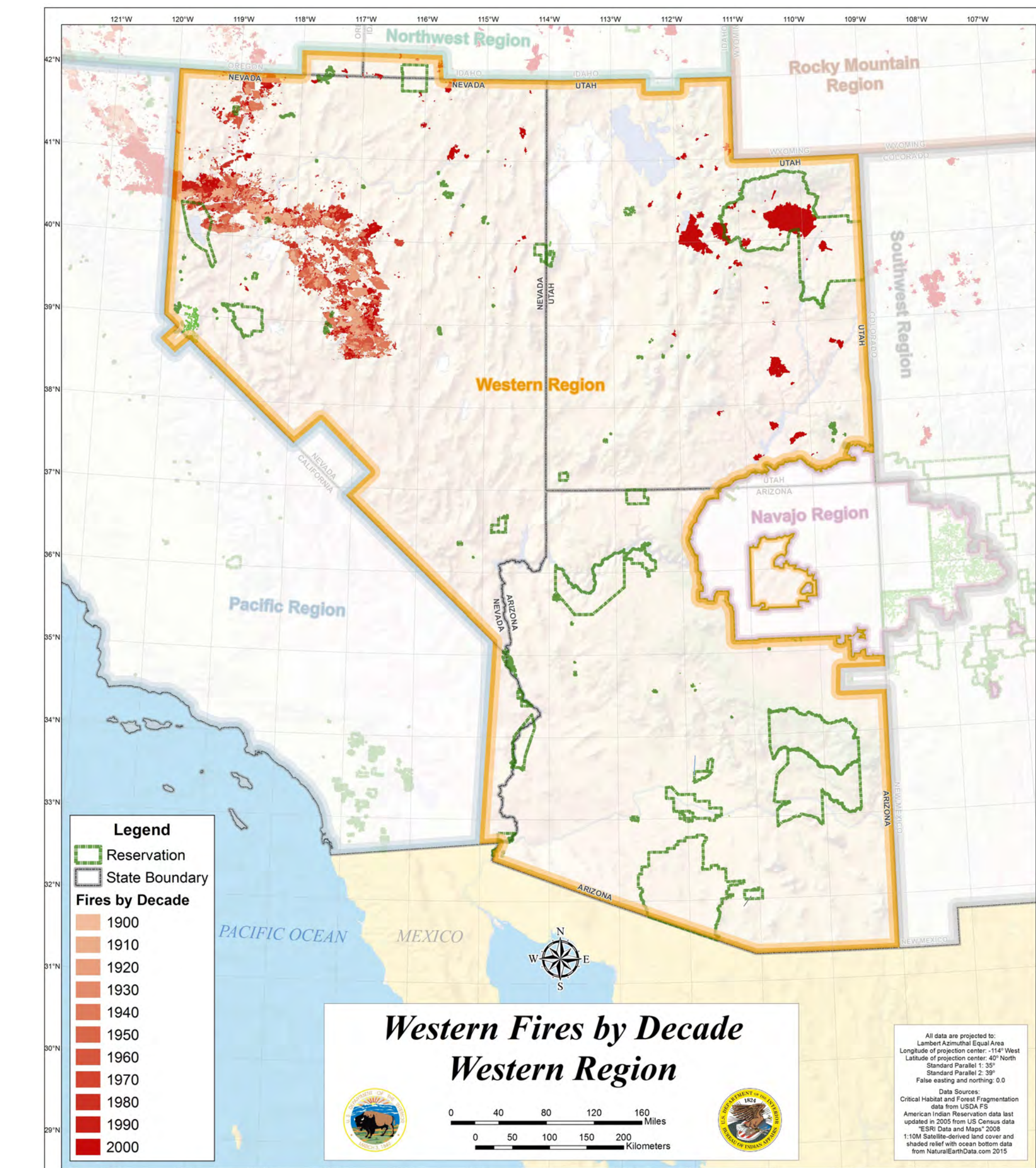
Data Source: USDA FS | <https://data.fs.usda.gov/geodata/shapefiles/private/nationaldata.shp>

Risk of Fish Habitat Degradation



Data Source: National Fish Habitat Partnership | <https://ecosystems.usgs.gov/nfhabitat/viewdataset.asp?dataset=5069&scene=49075392&lat=27.27>

Western Fires by Decade



Data Source: USGS | http://sfs.usgs.gov/Fresk_ScienceData/western_firees/1870-2007.shp