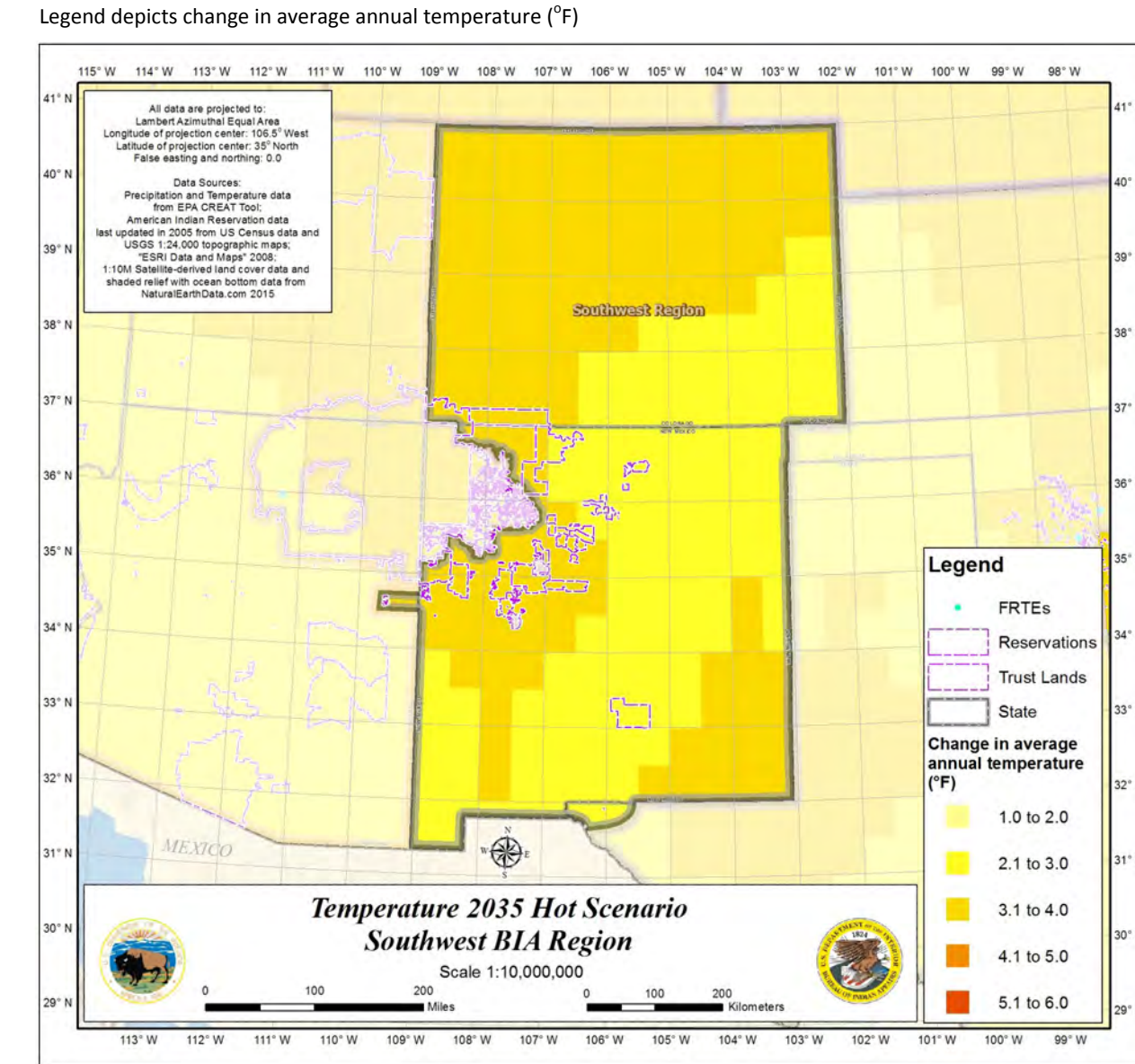
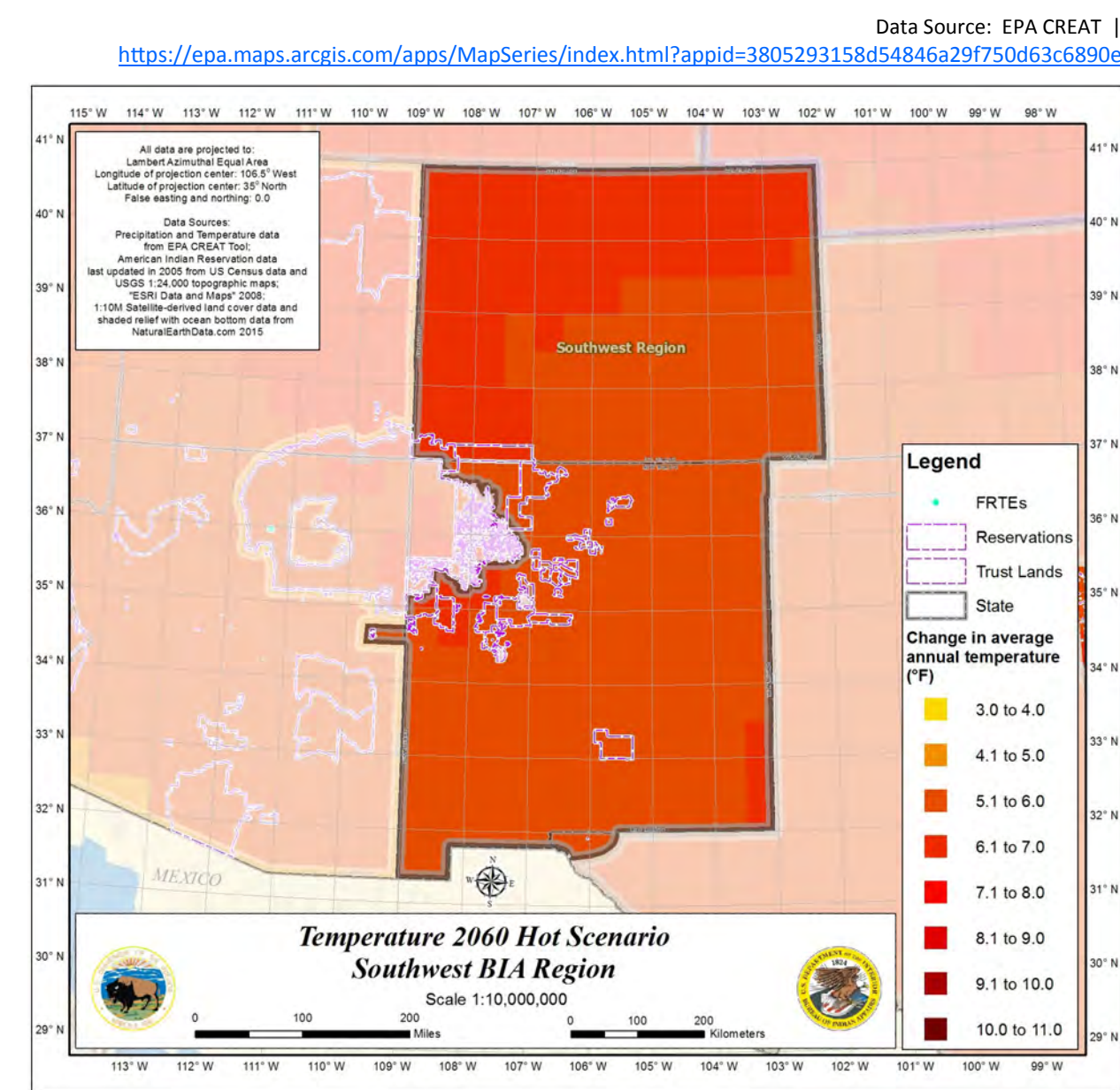


GIS for Tribal Resilience — BIA Southwest Region

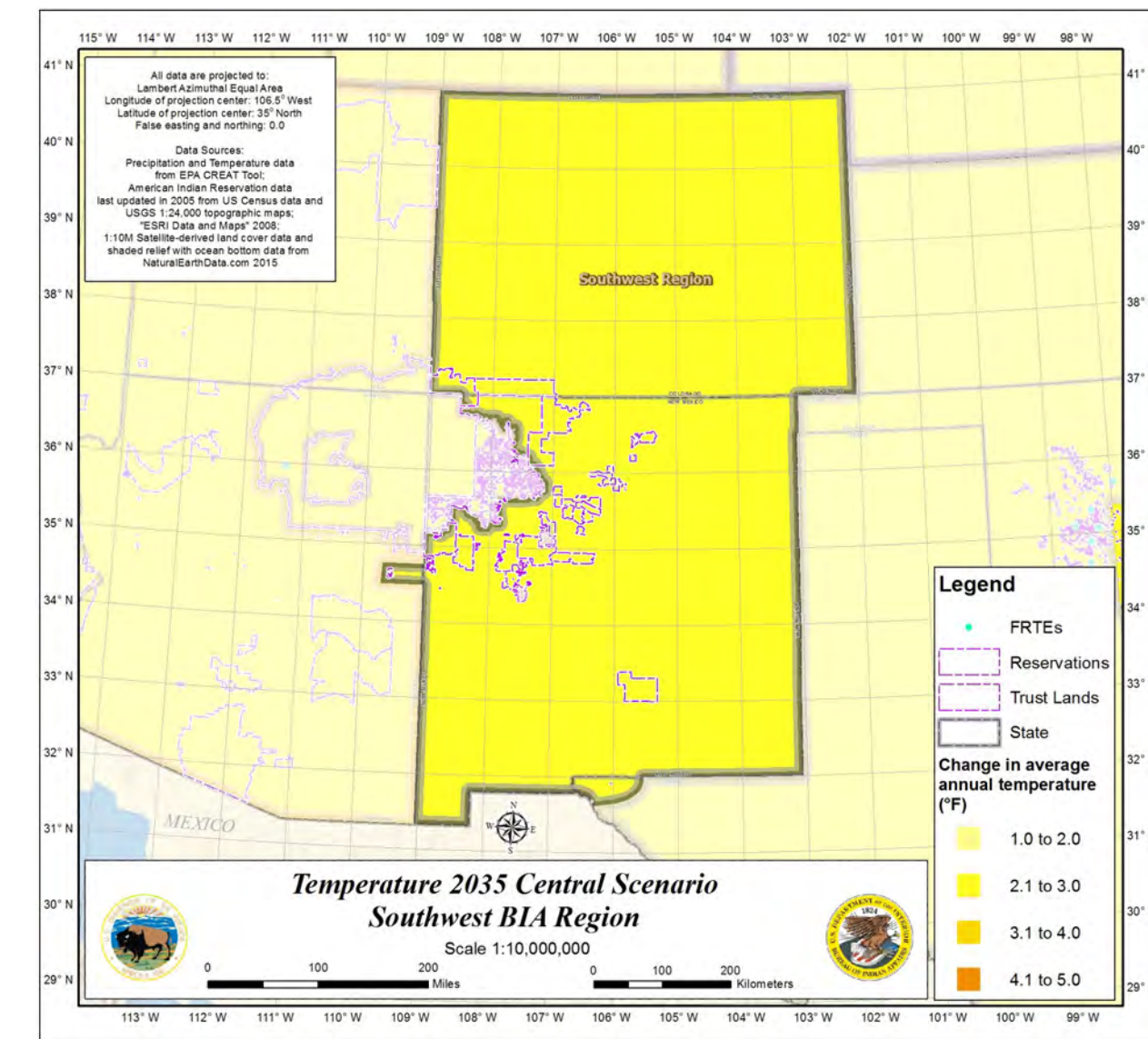
Temperature Scenarios



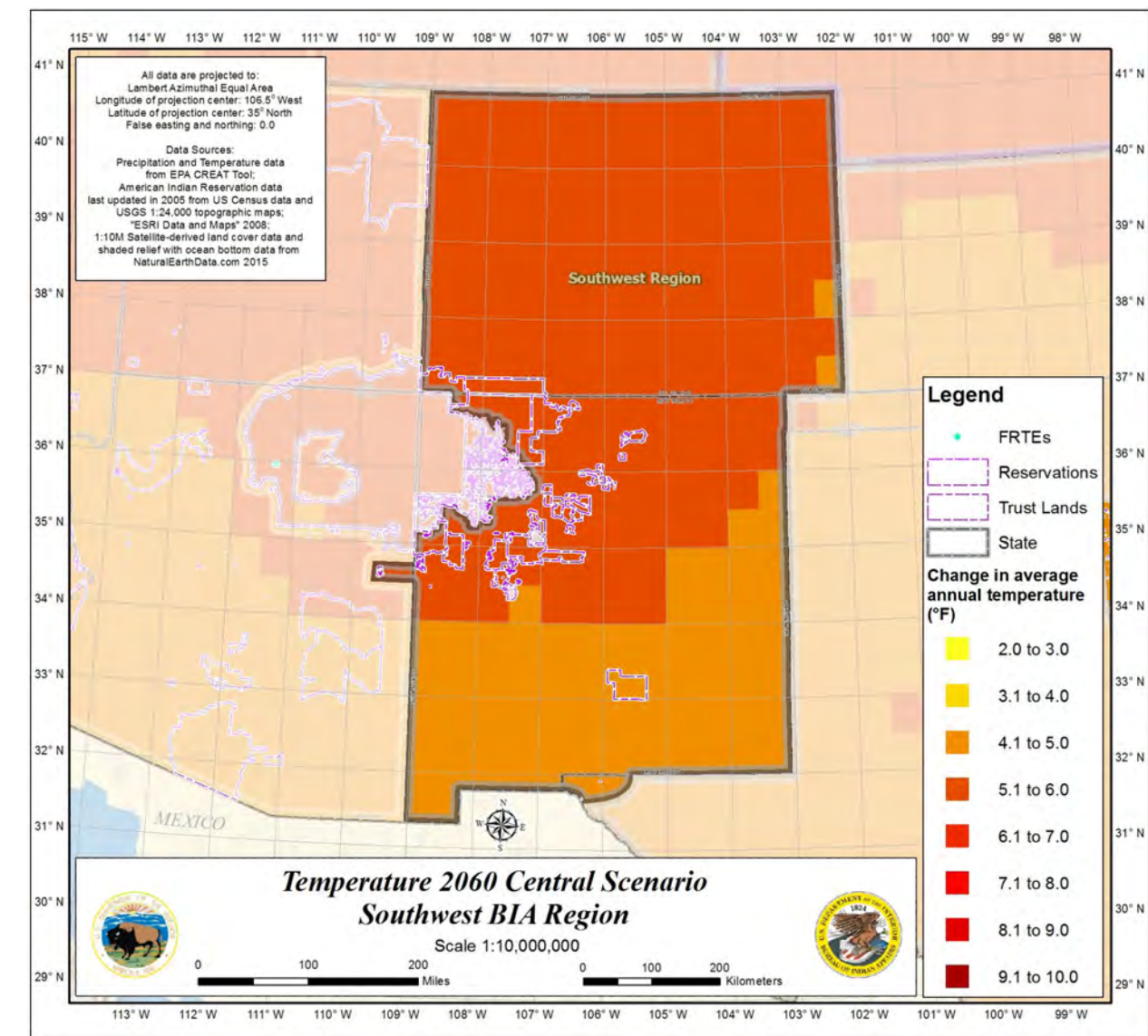
Hot 2035



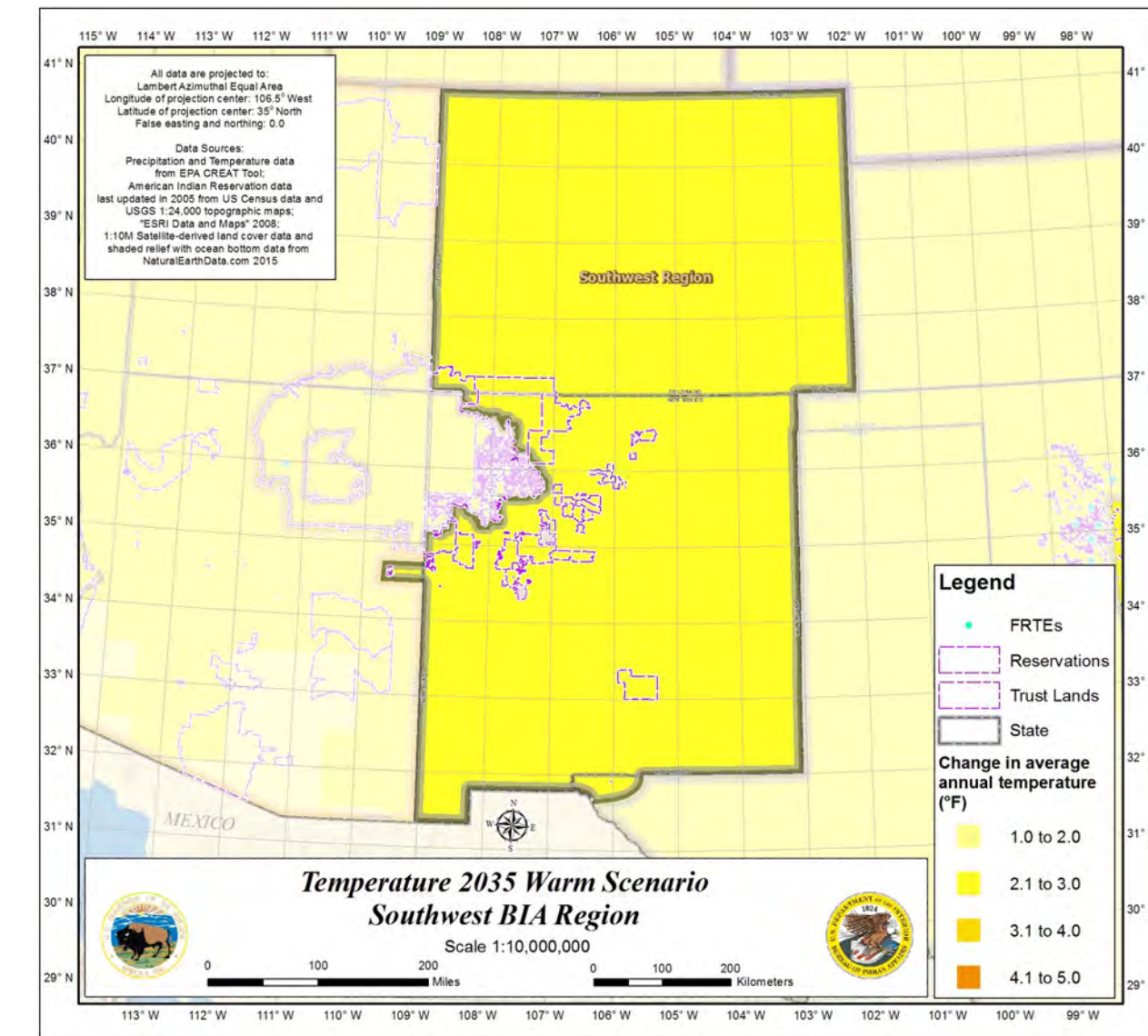
Hot 2060



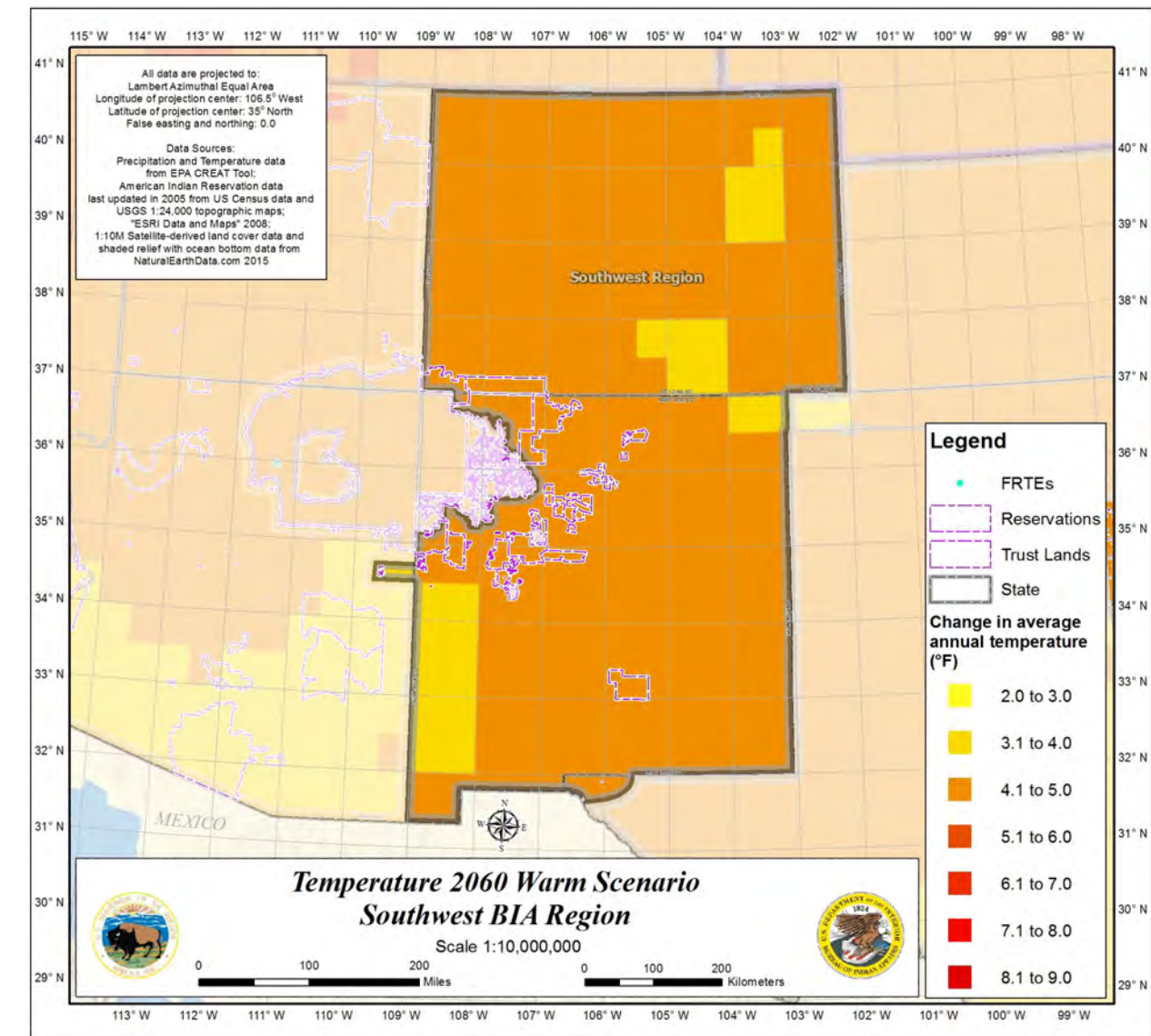
Central 2035



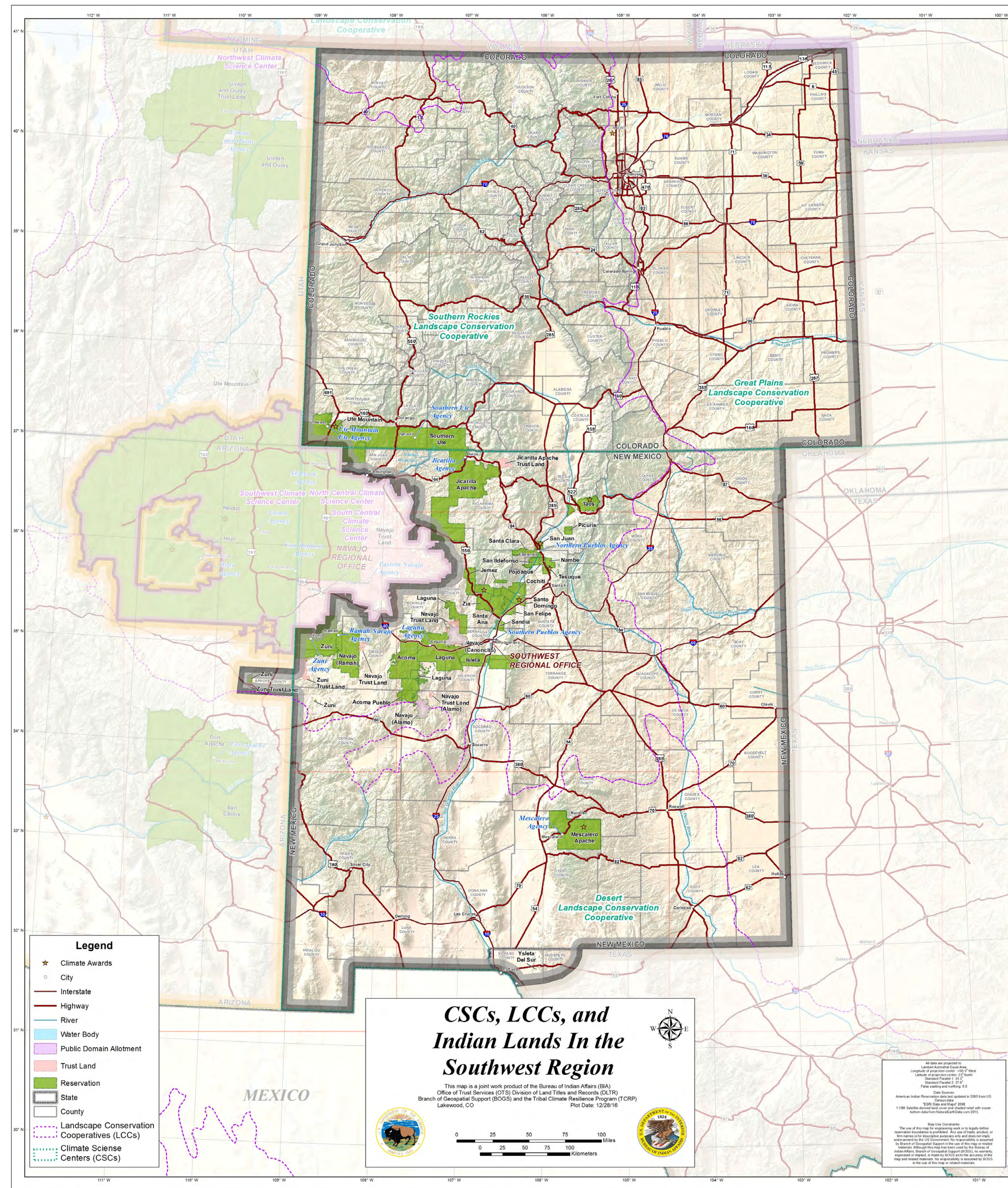
Central 2060



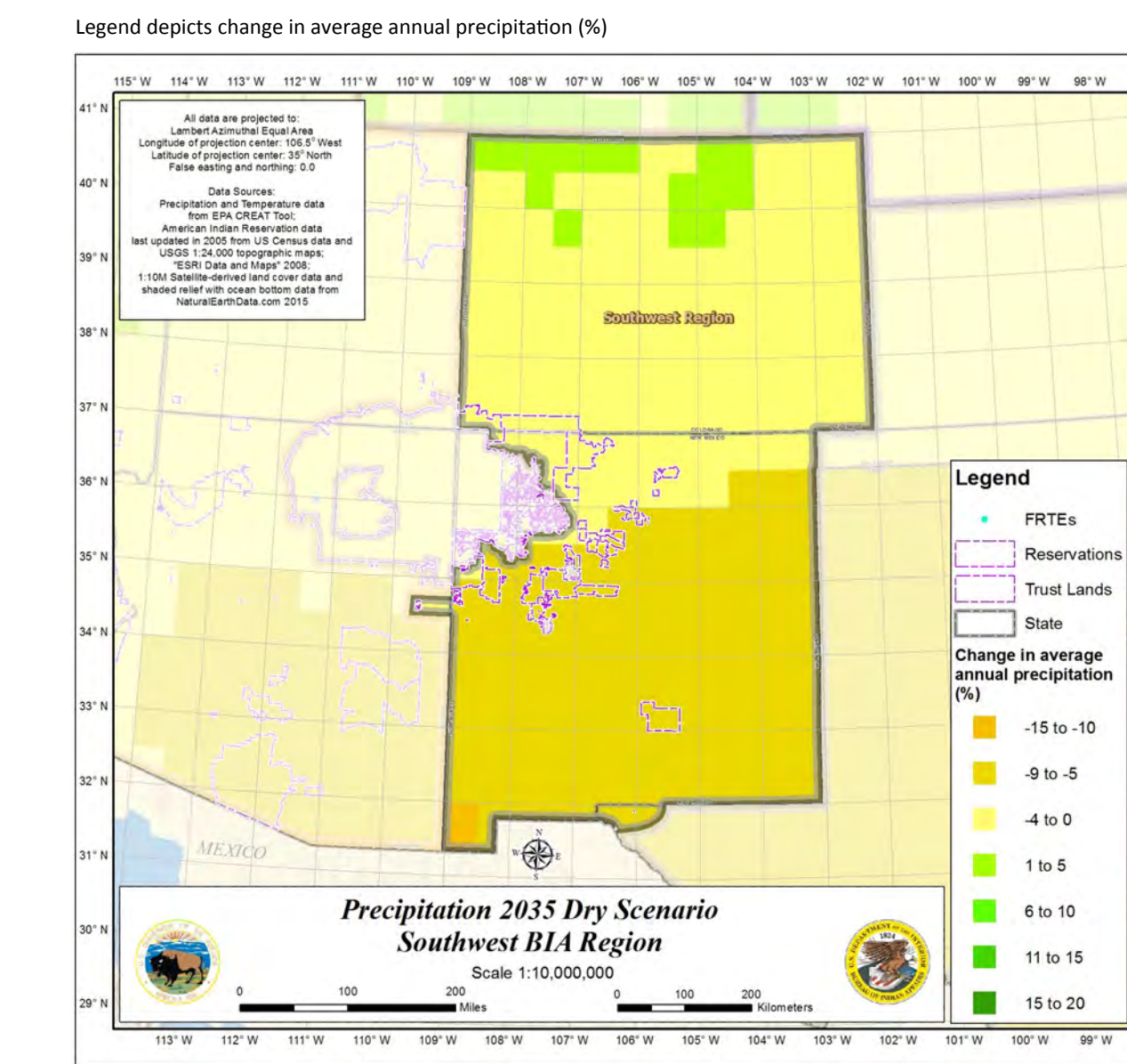
Warm 2035



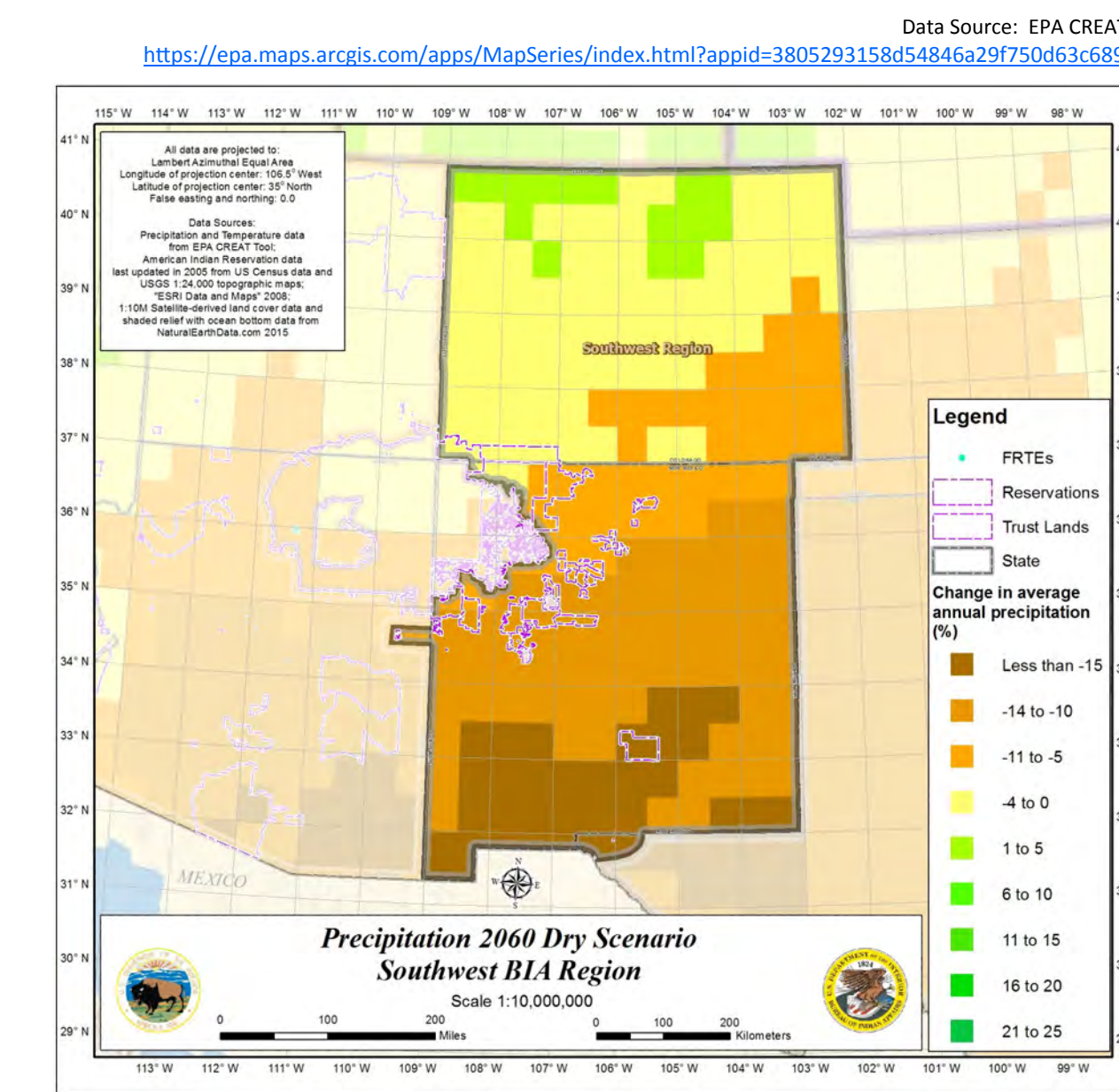
Warm 2060



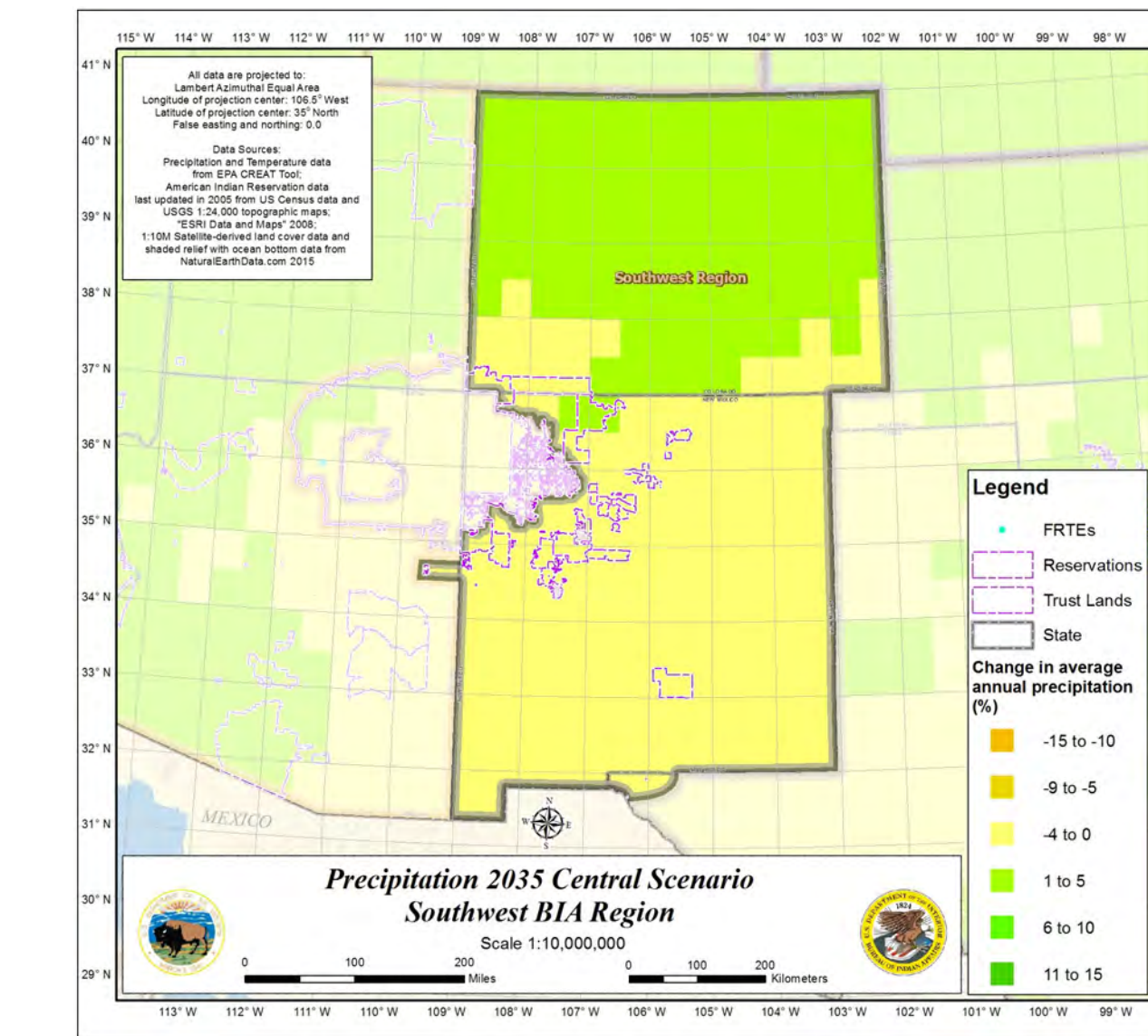
Precipitation Scenarios



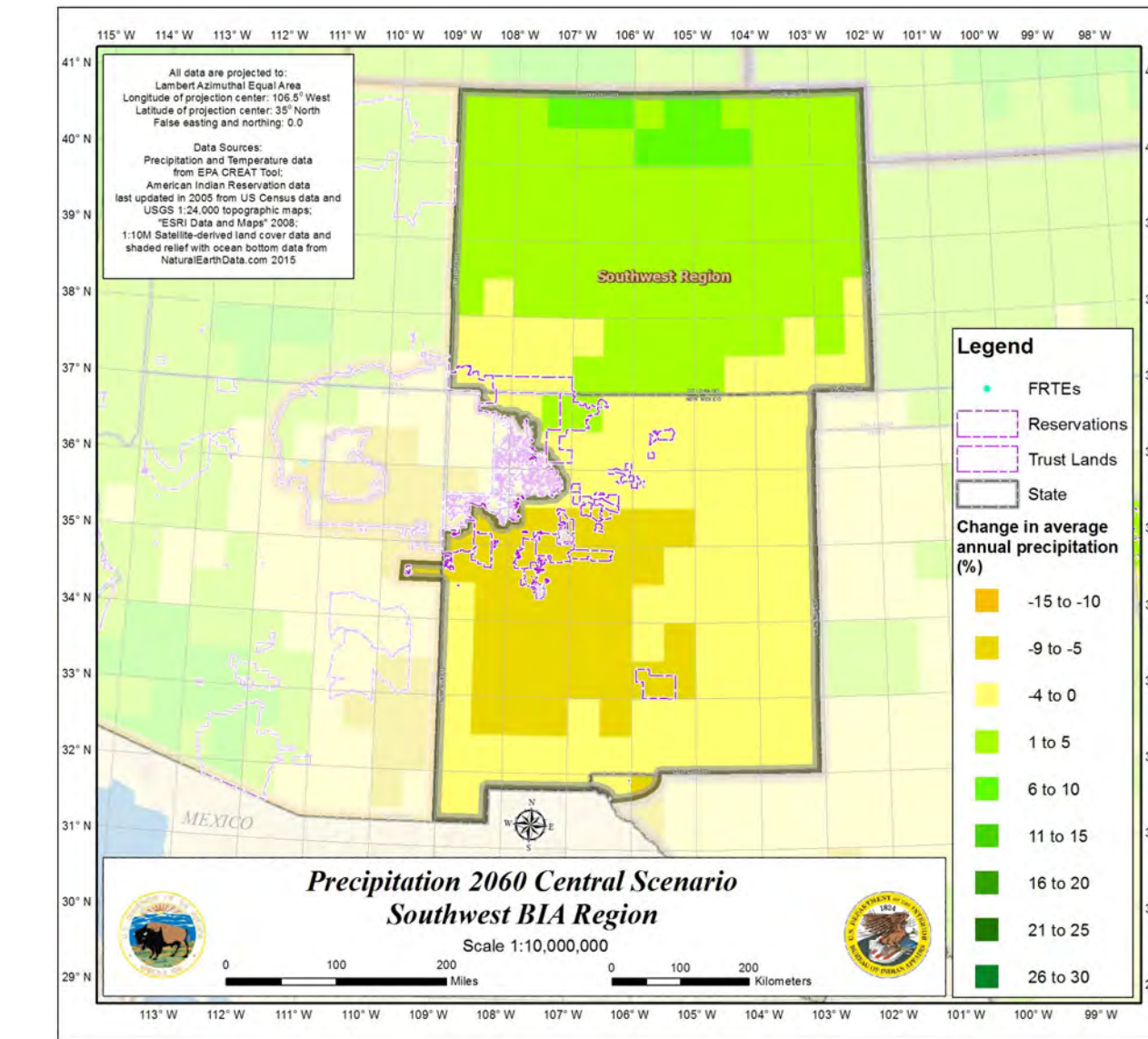
Dry 2035



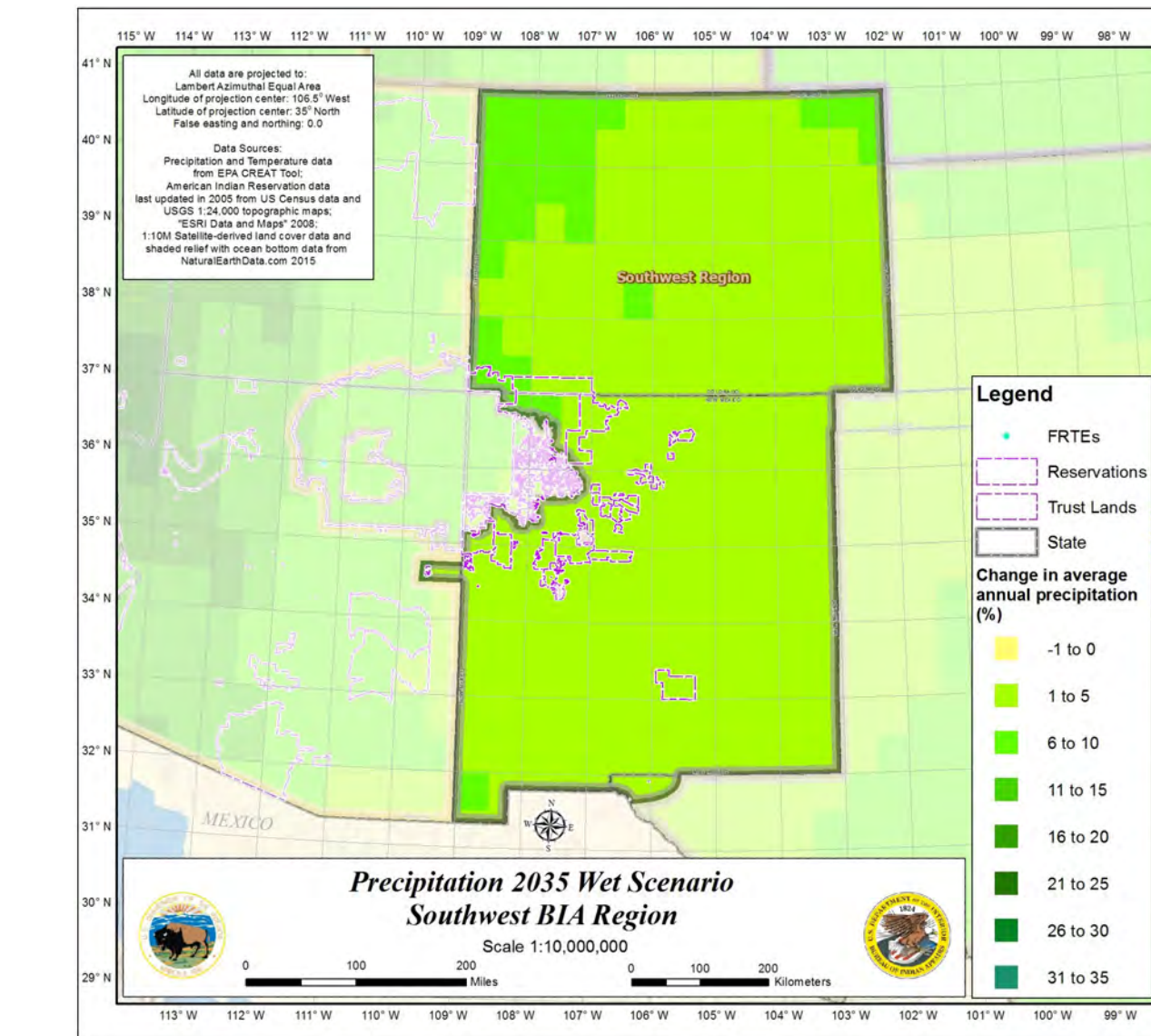
Dry 2060



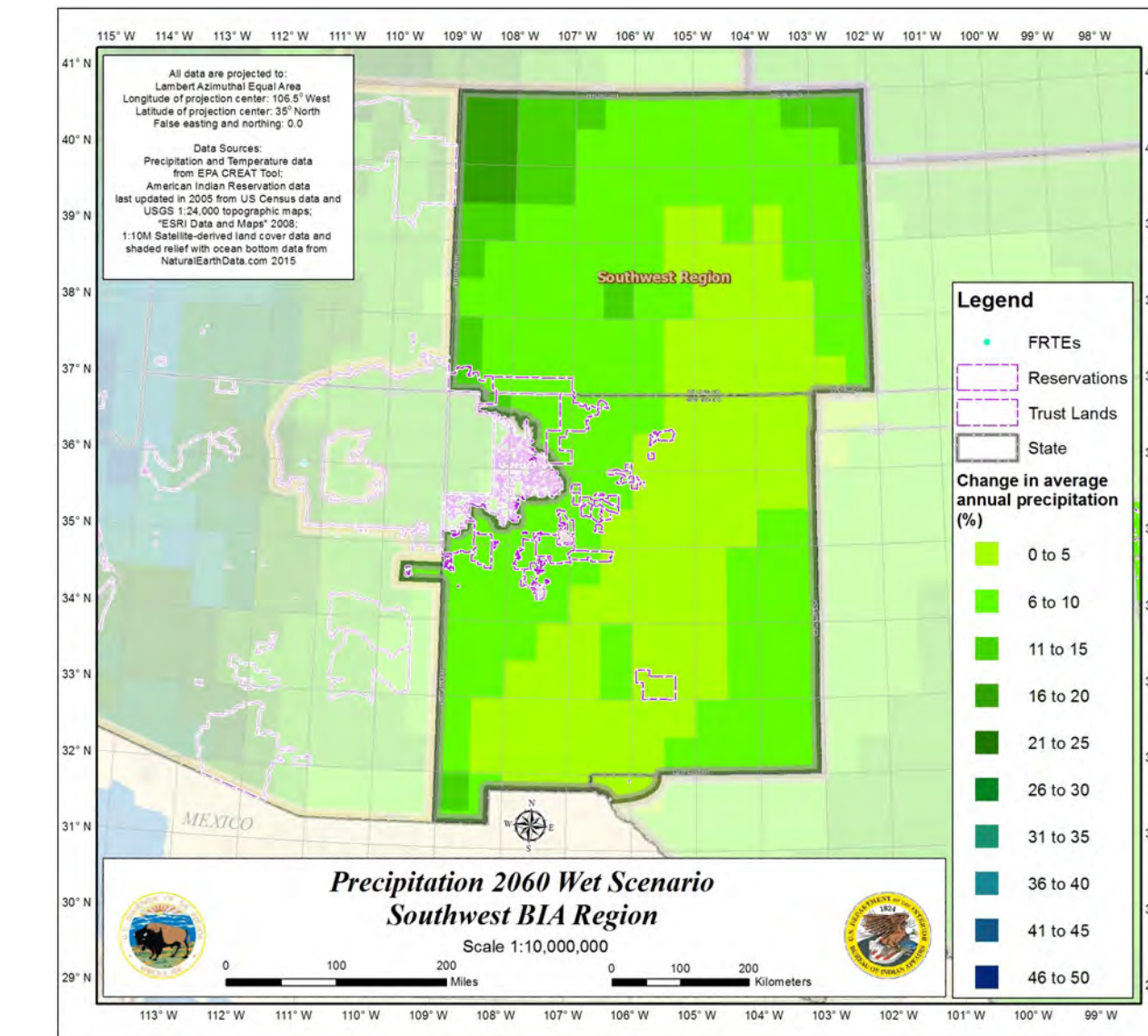
Central 2035



Central 2060

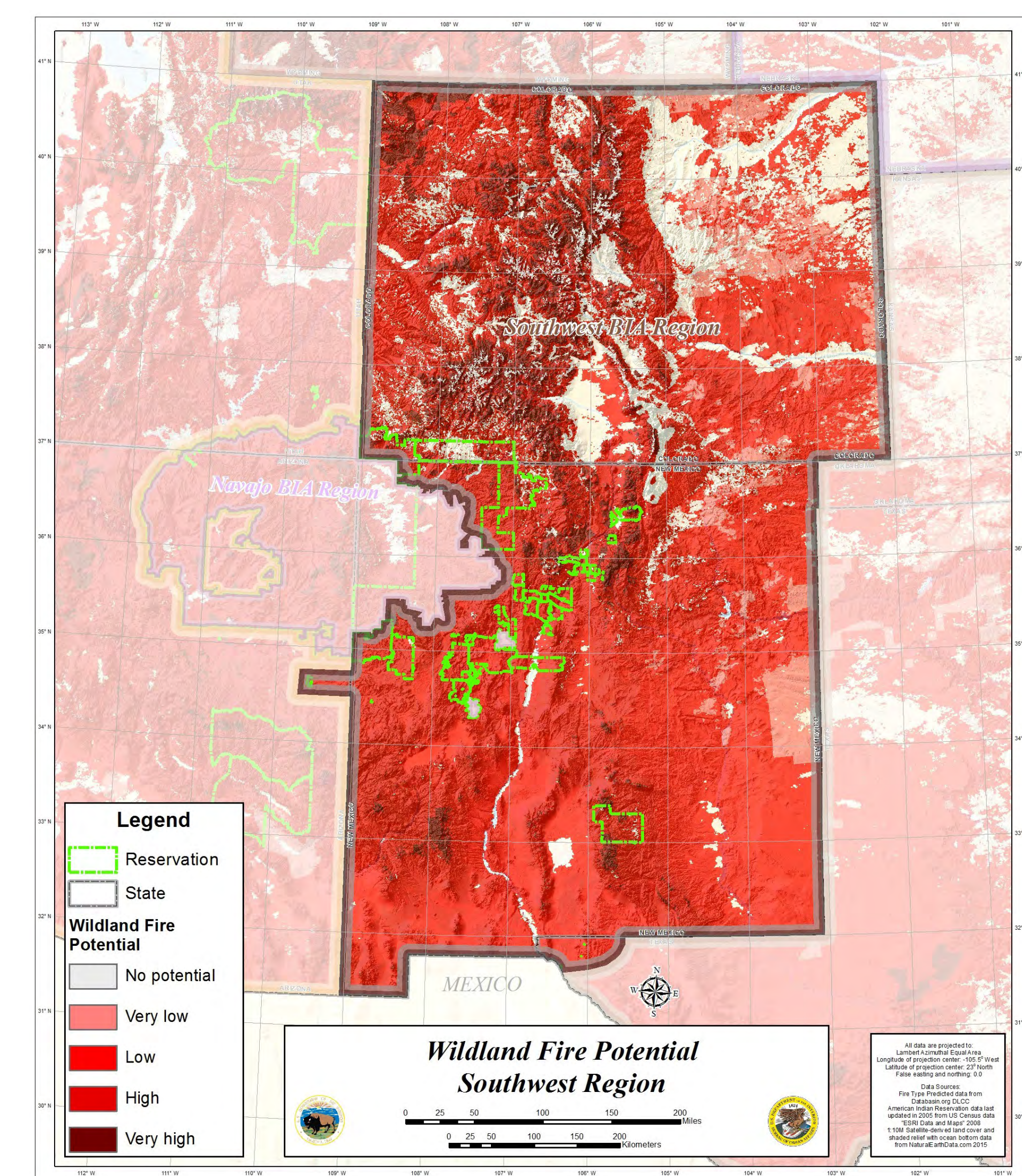


Wet 2035



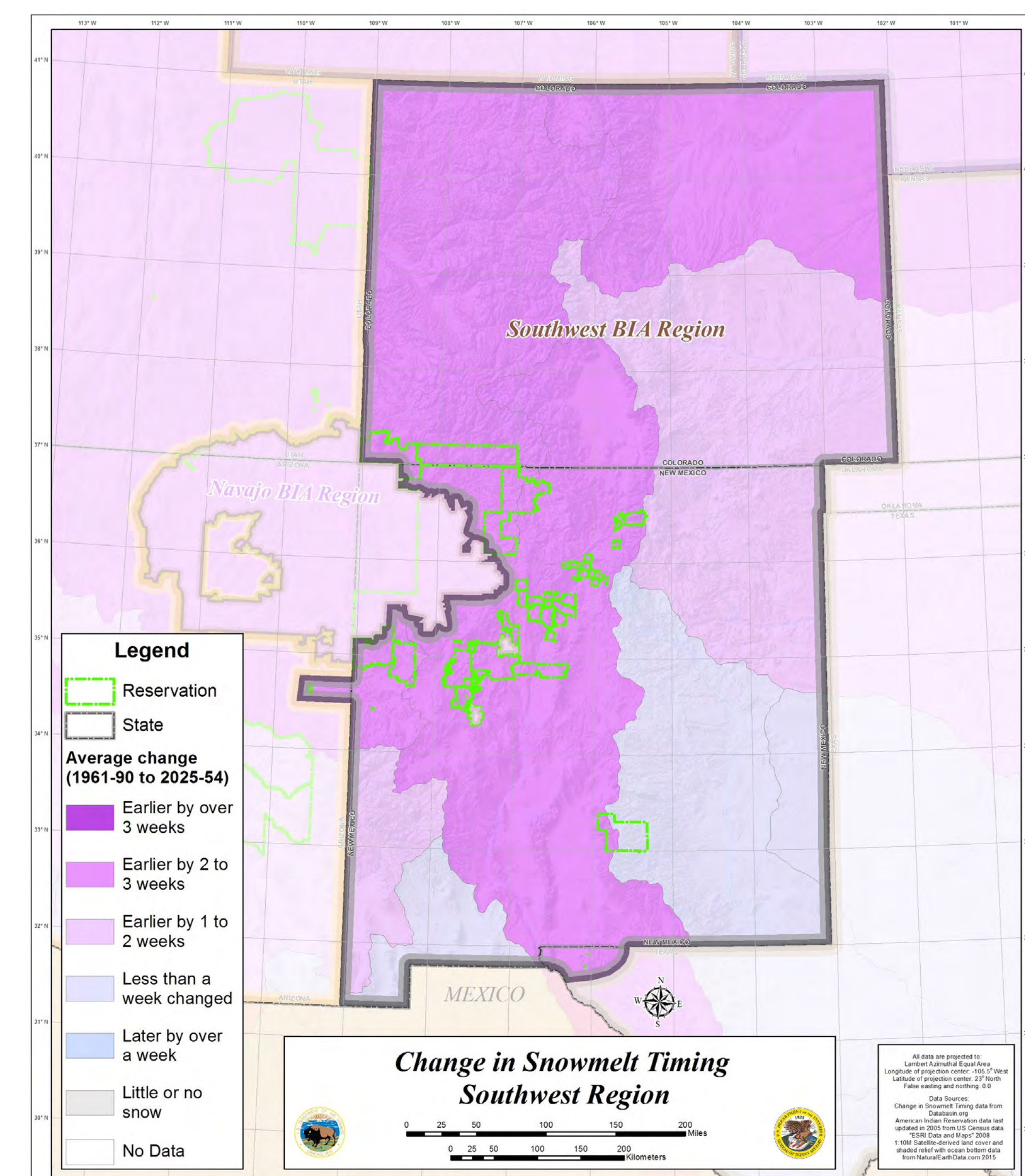
Wet 2060

Wildland Fire Potential



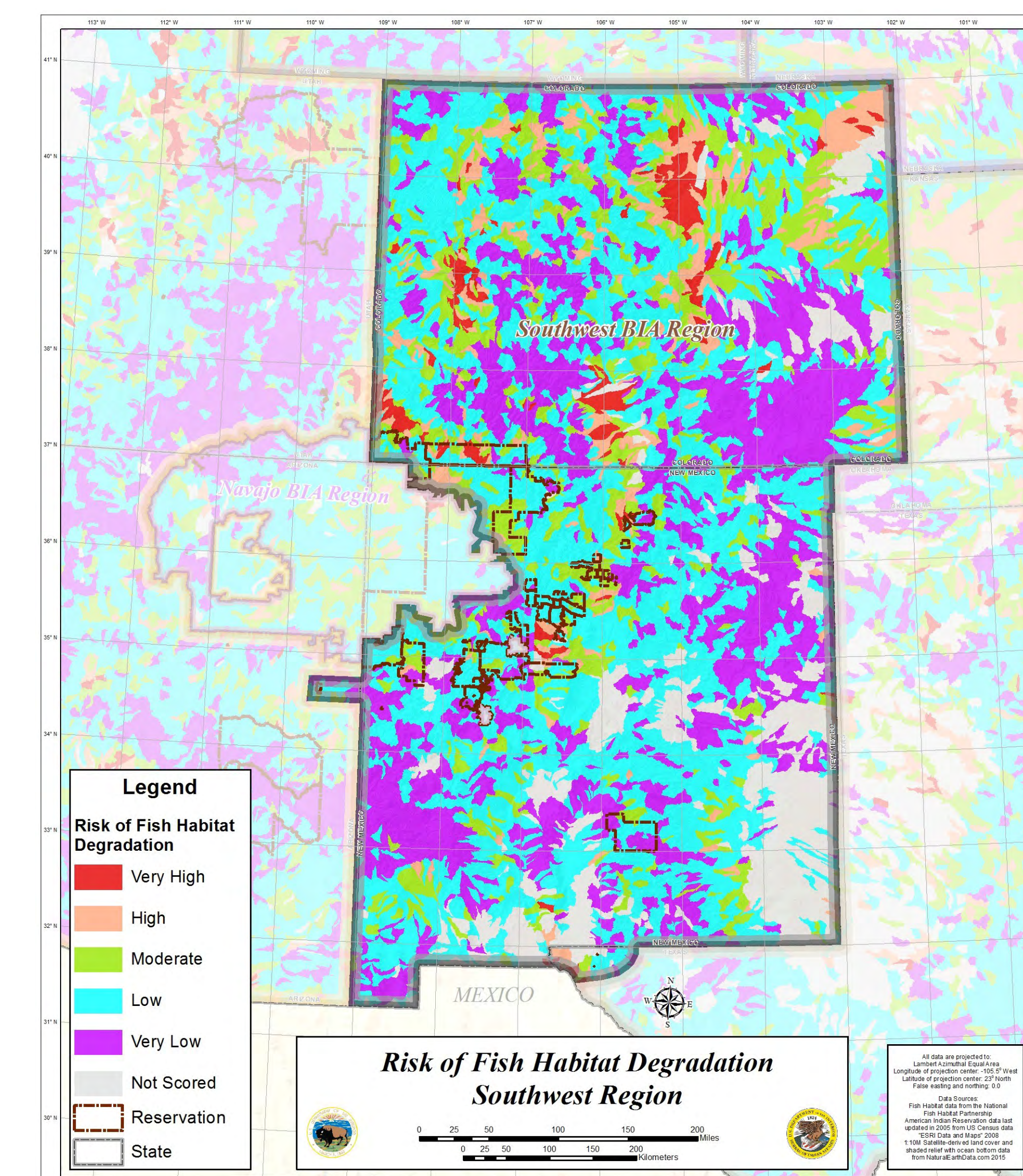
Data Source: USDA FS | https://data.fs.usda.gov/geodata/state_privates/rotpooldata.php

Change in Snowmelt Timing



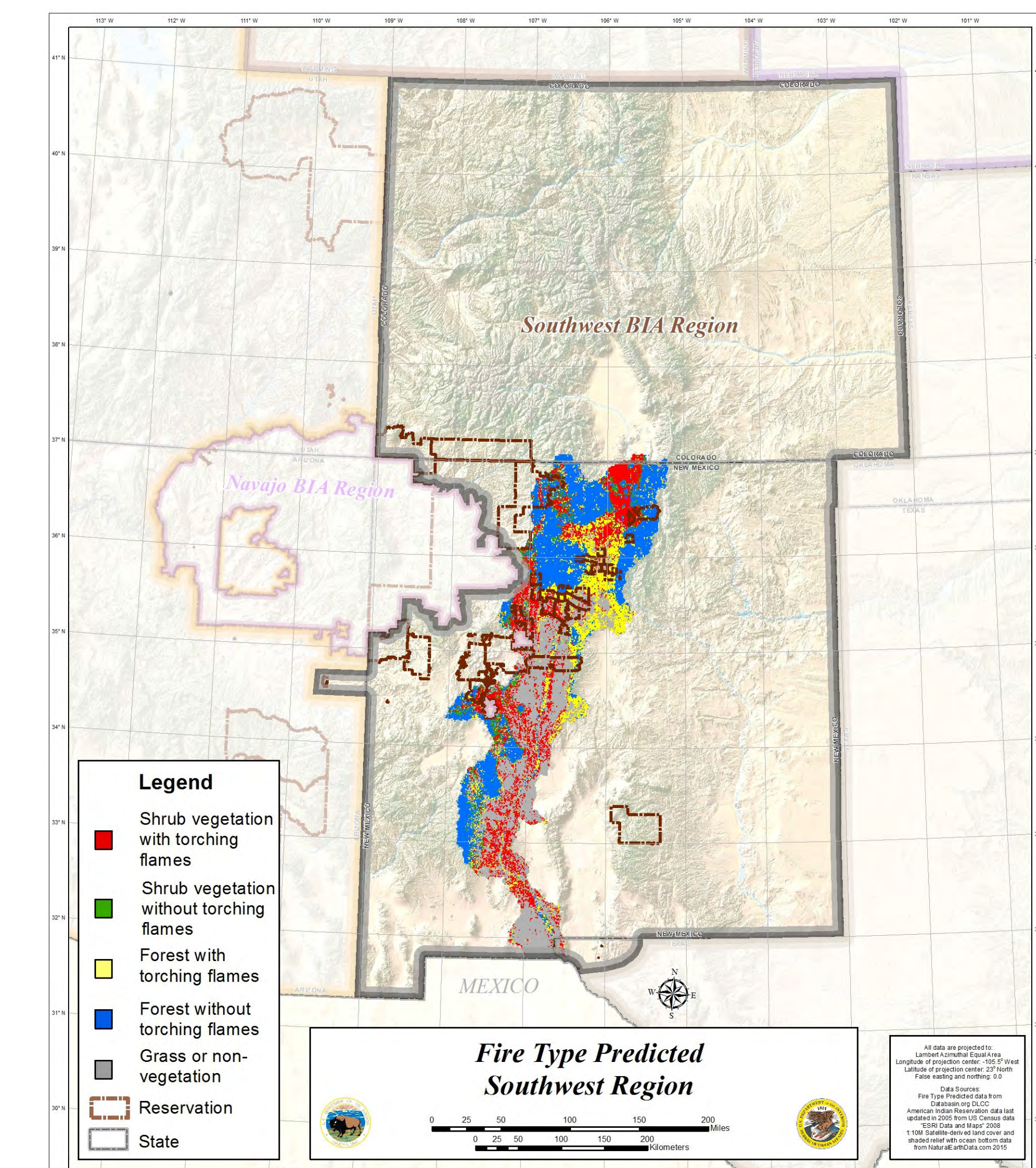
Data Source: Databasin.org | <https://databasin.org/datasets/7819b679e41d4e6952c3a379e0cd7b5>

Risk of Fish Habitat Degradation



Data Source: National Fish Habitat Partnership | <https://ecosystems.usgs.gov/fishhabitat/viewdataset.asp?bid=5069&ce=4075392&bt=727>

Fire Type Predicted



Data Source: Databasin.org DLCC | <https://dlcc.databasin.org/datasets/3f6e736e3c4ae6949669b9350266a>