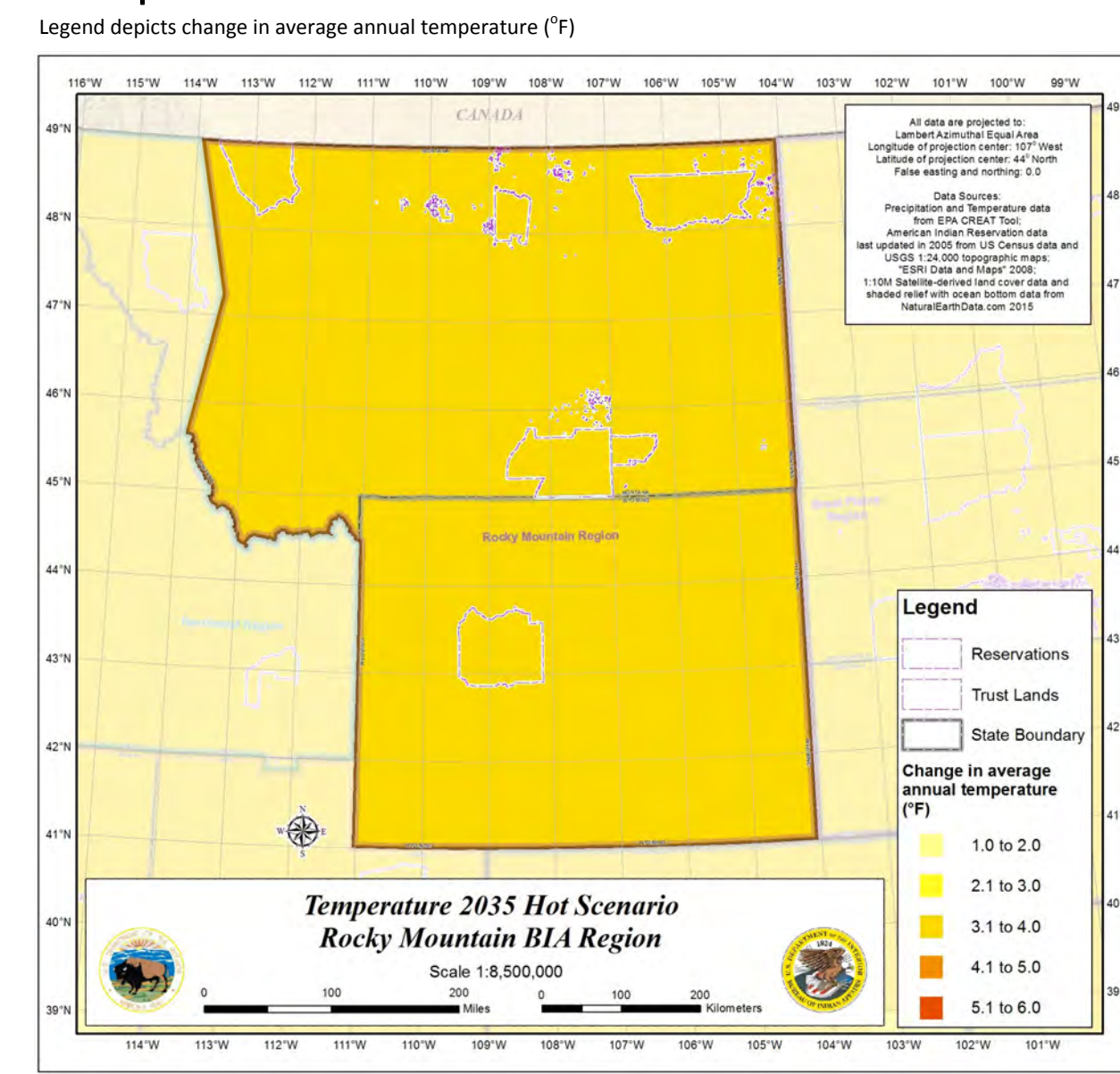
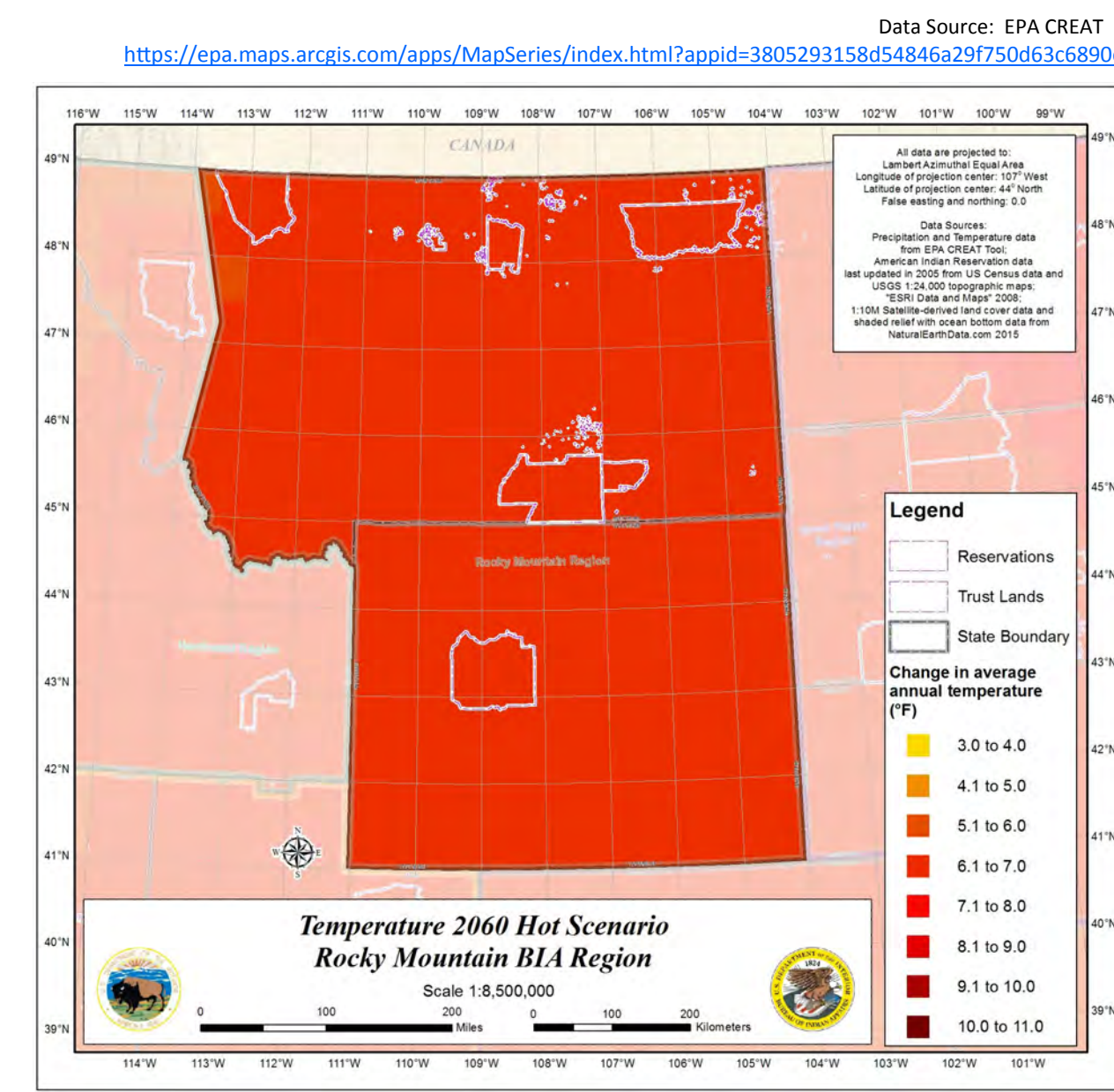


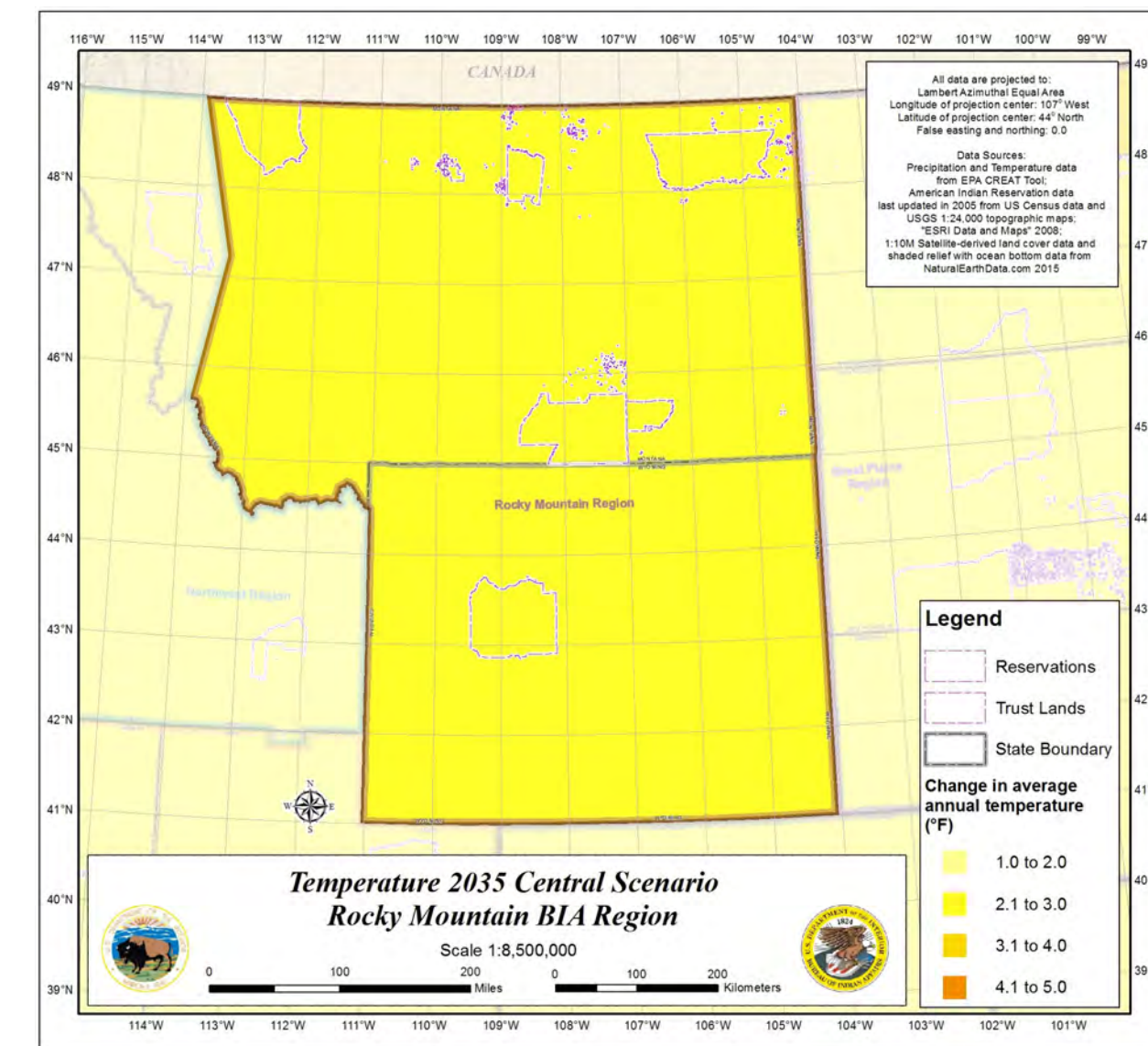
Temperature Scenarios



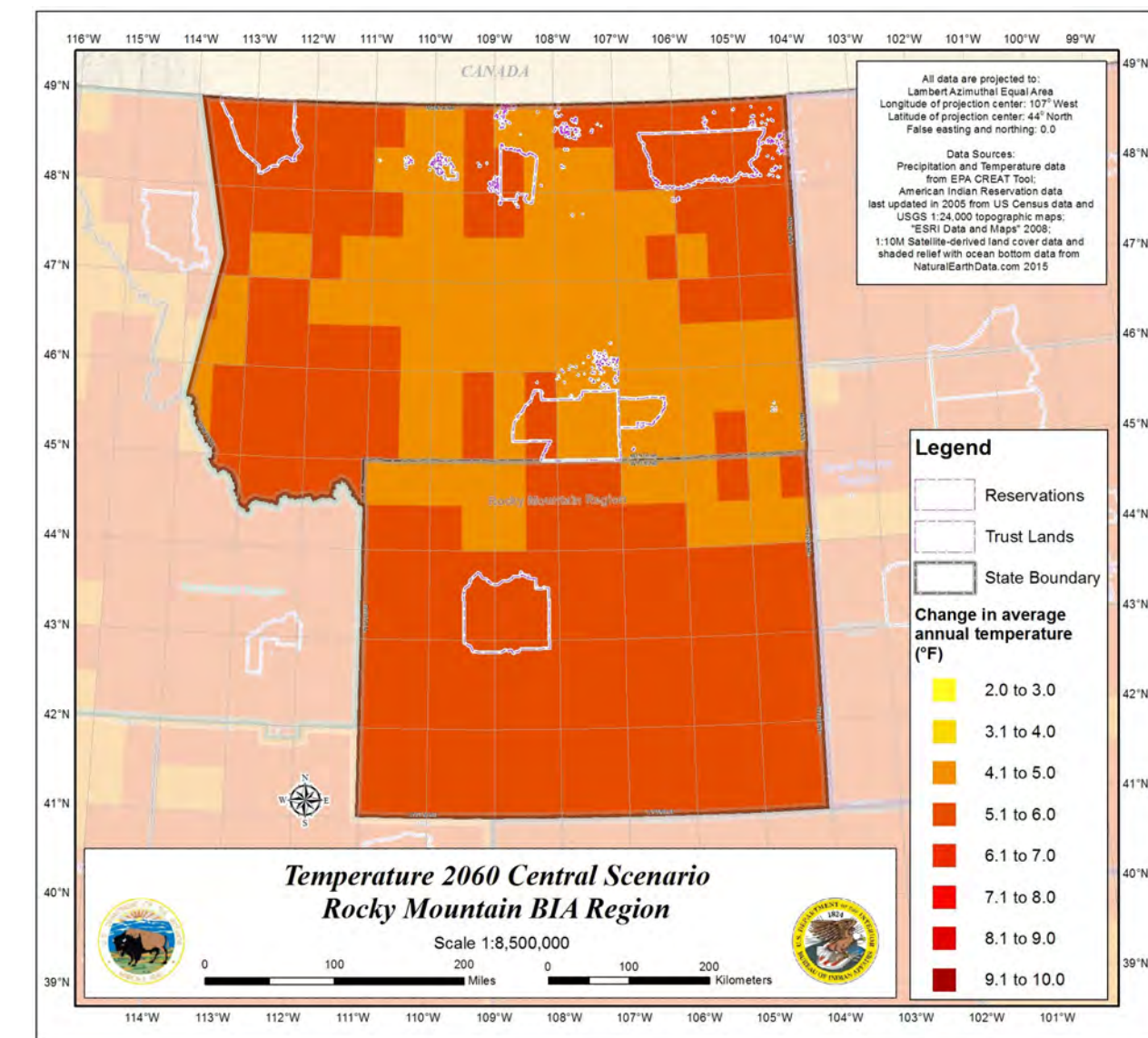
Hot 2035



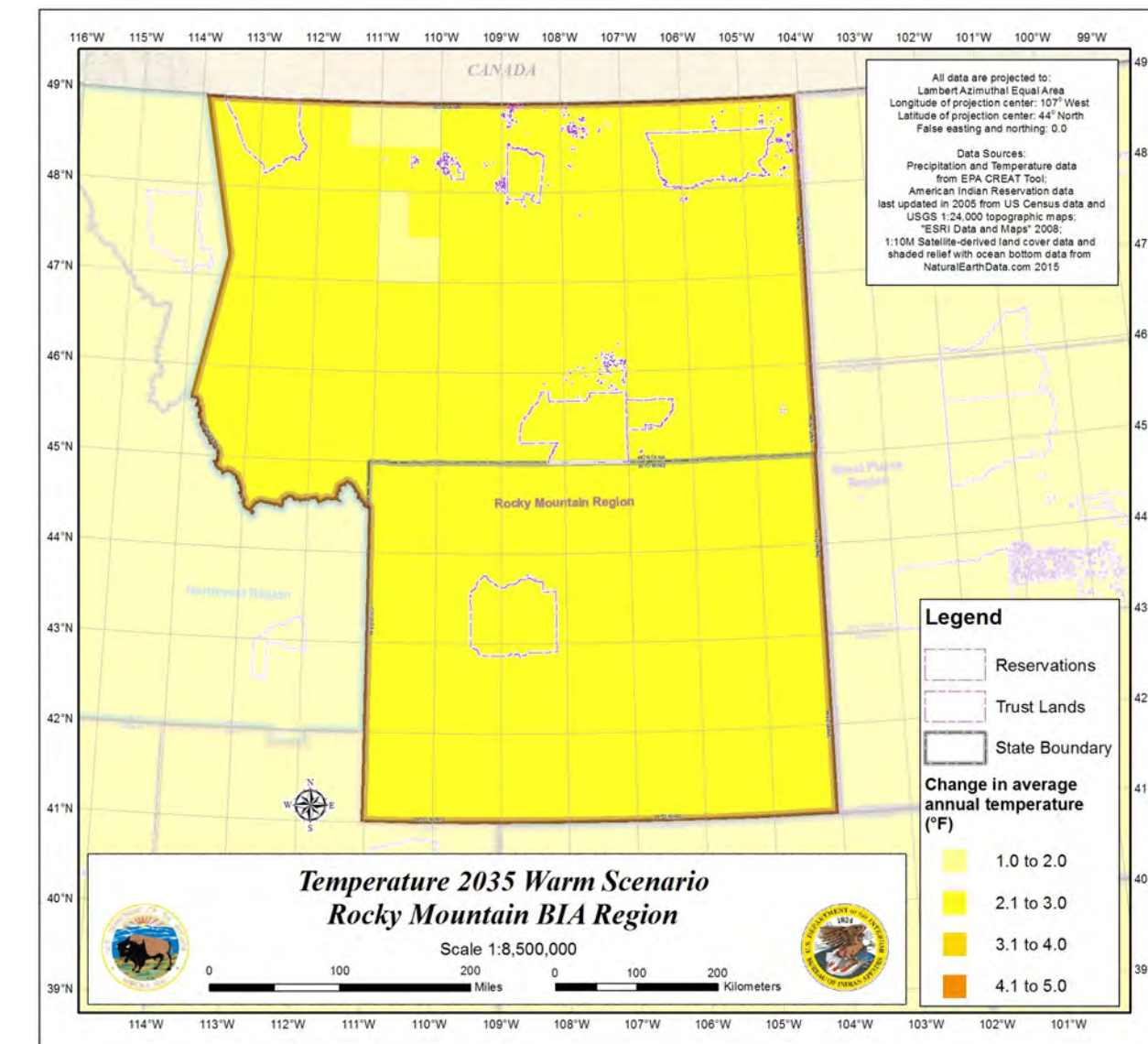
Hot 2060



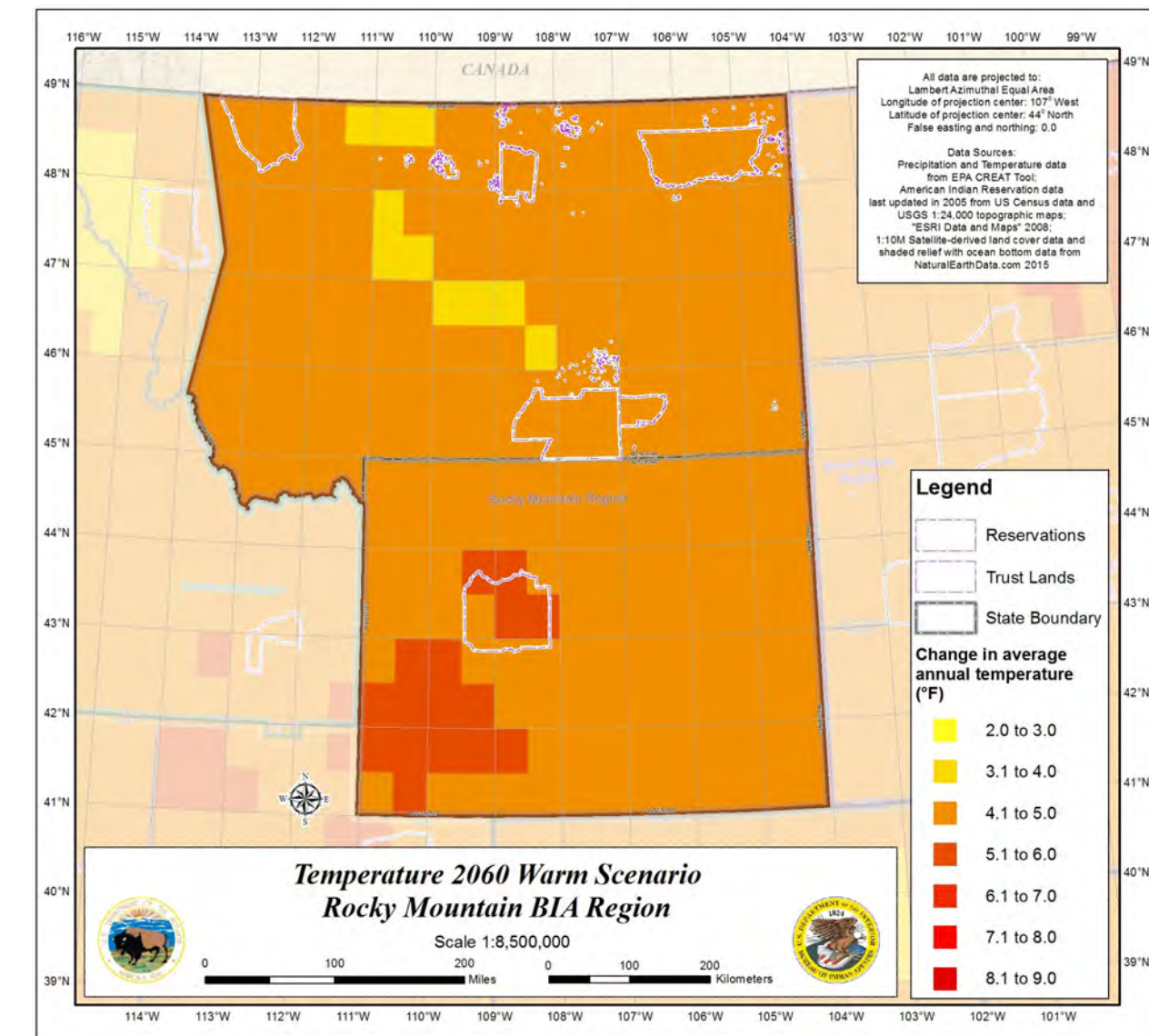
Central 2035



Central 2060

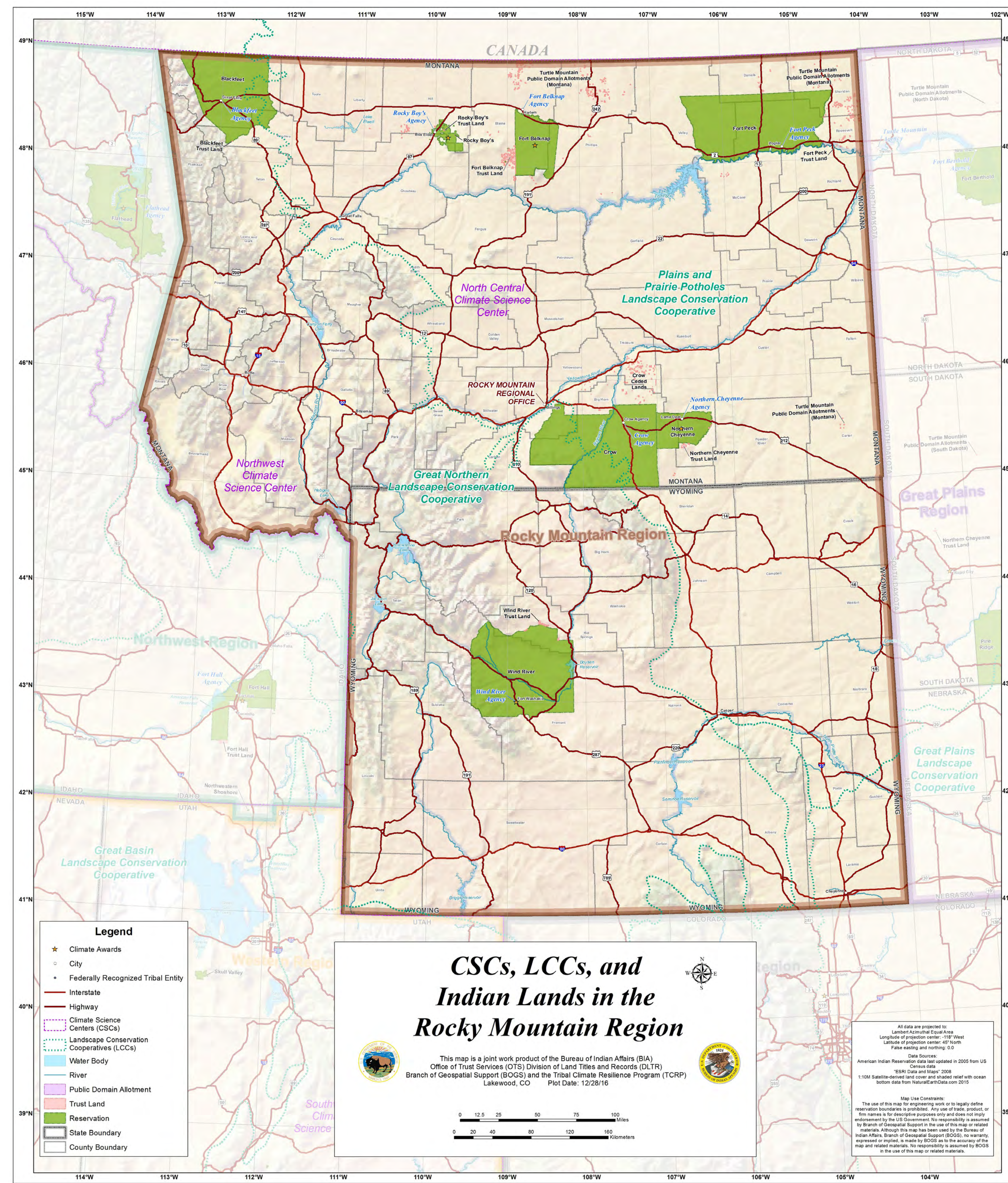


Warm 2035

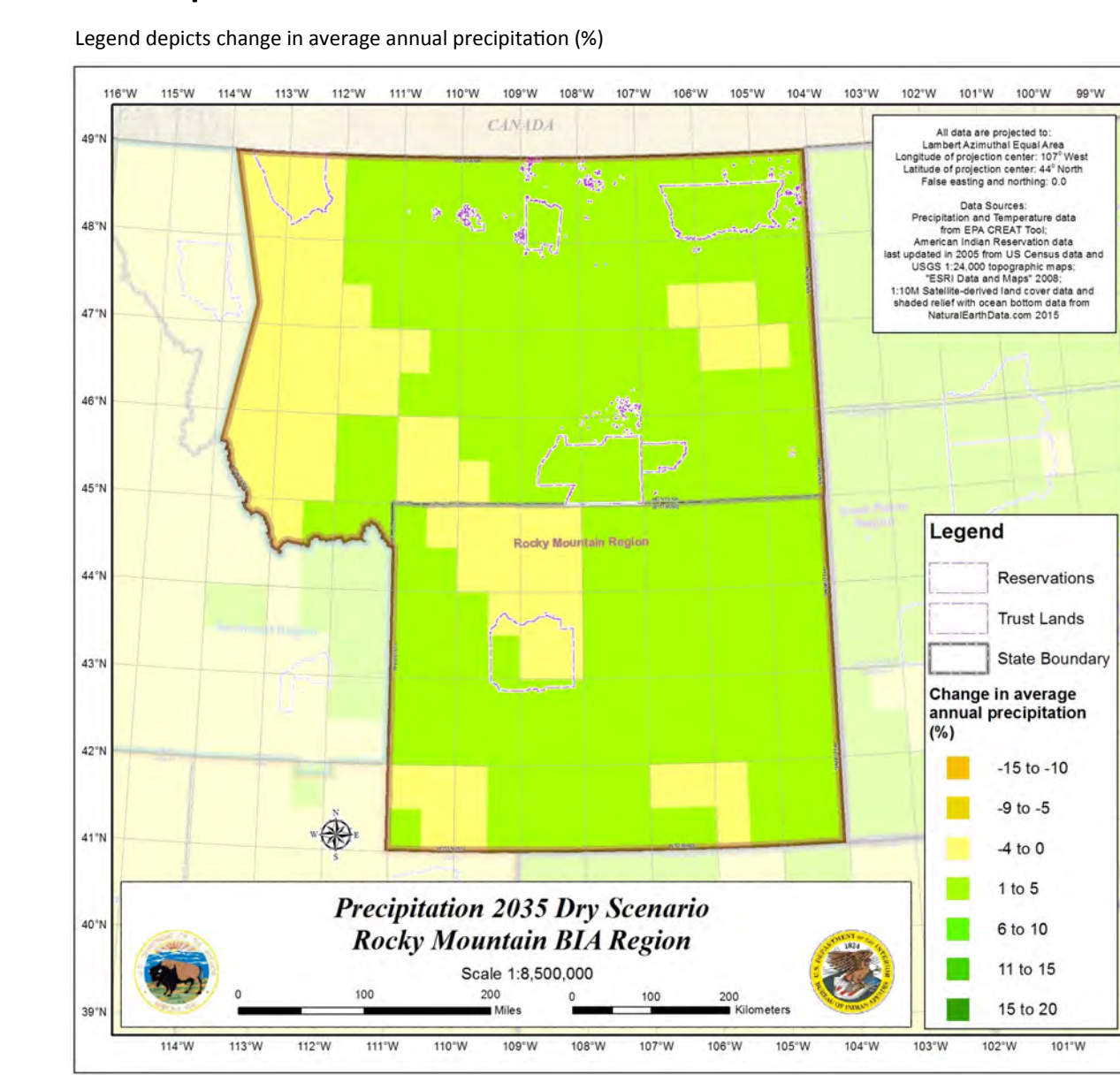


Warm 2060

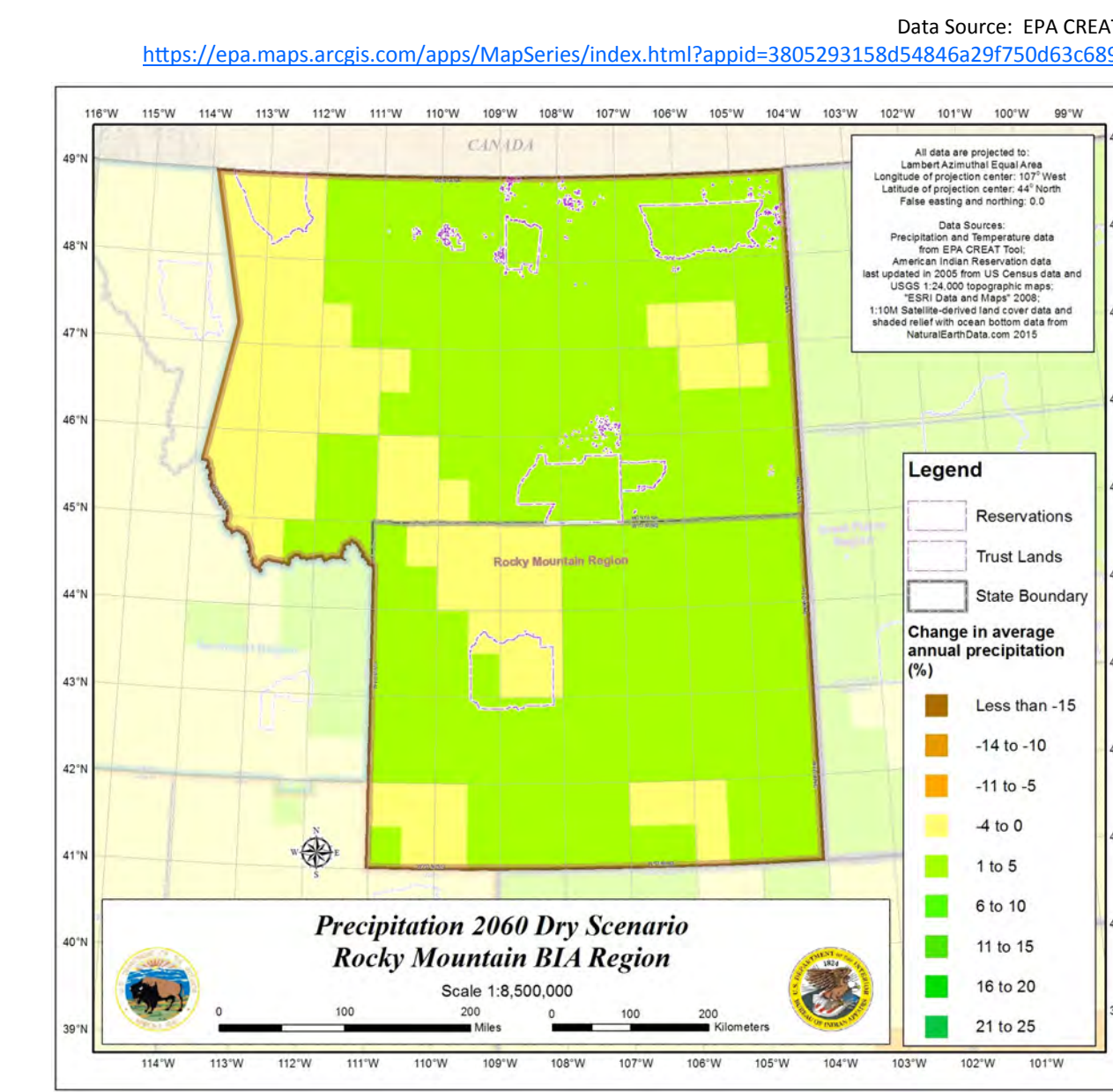
GIS for Tribal Resilience — BIA Rocky Mountain Region



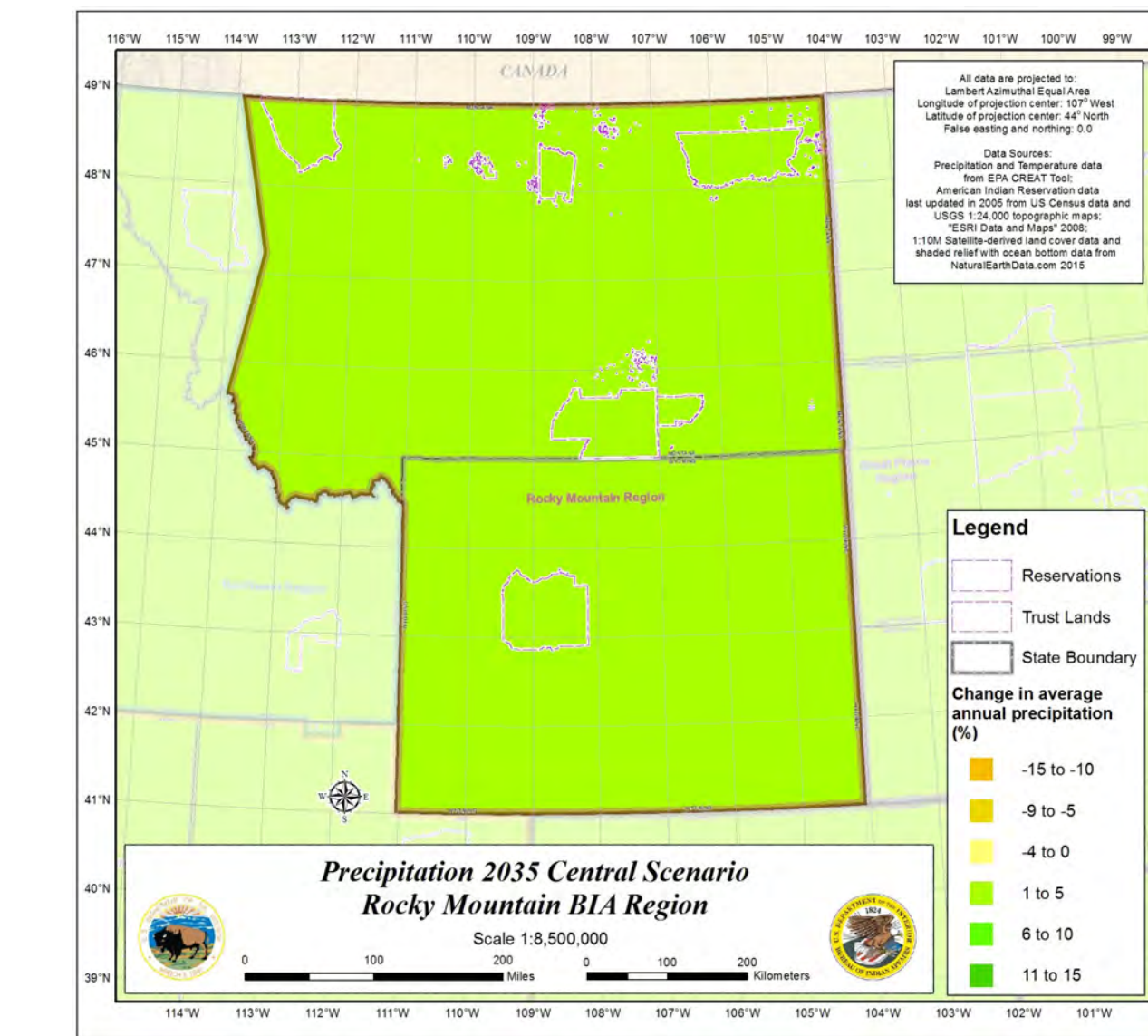
Precipitation Scenarios



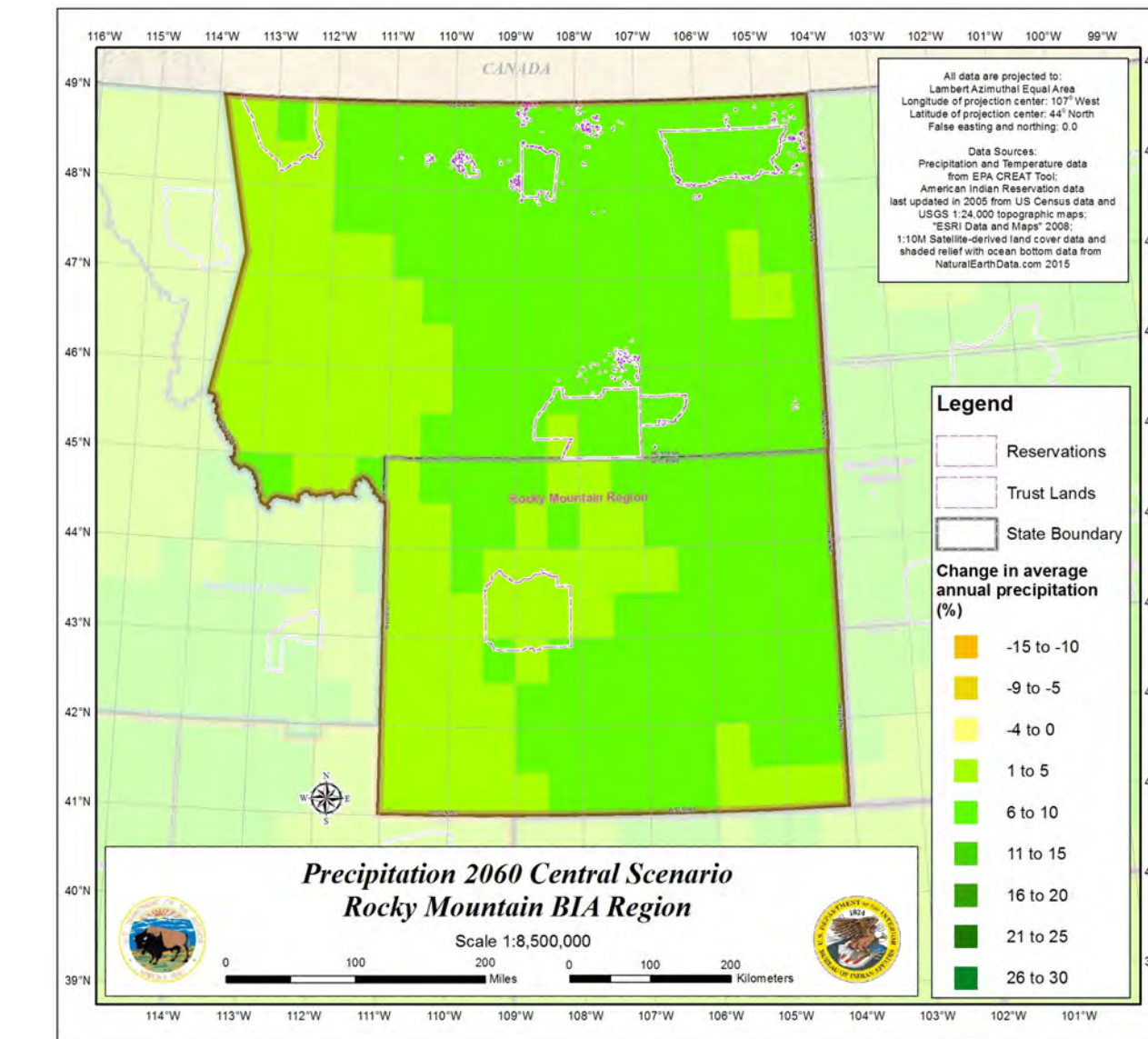
Dry 2035



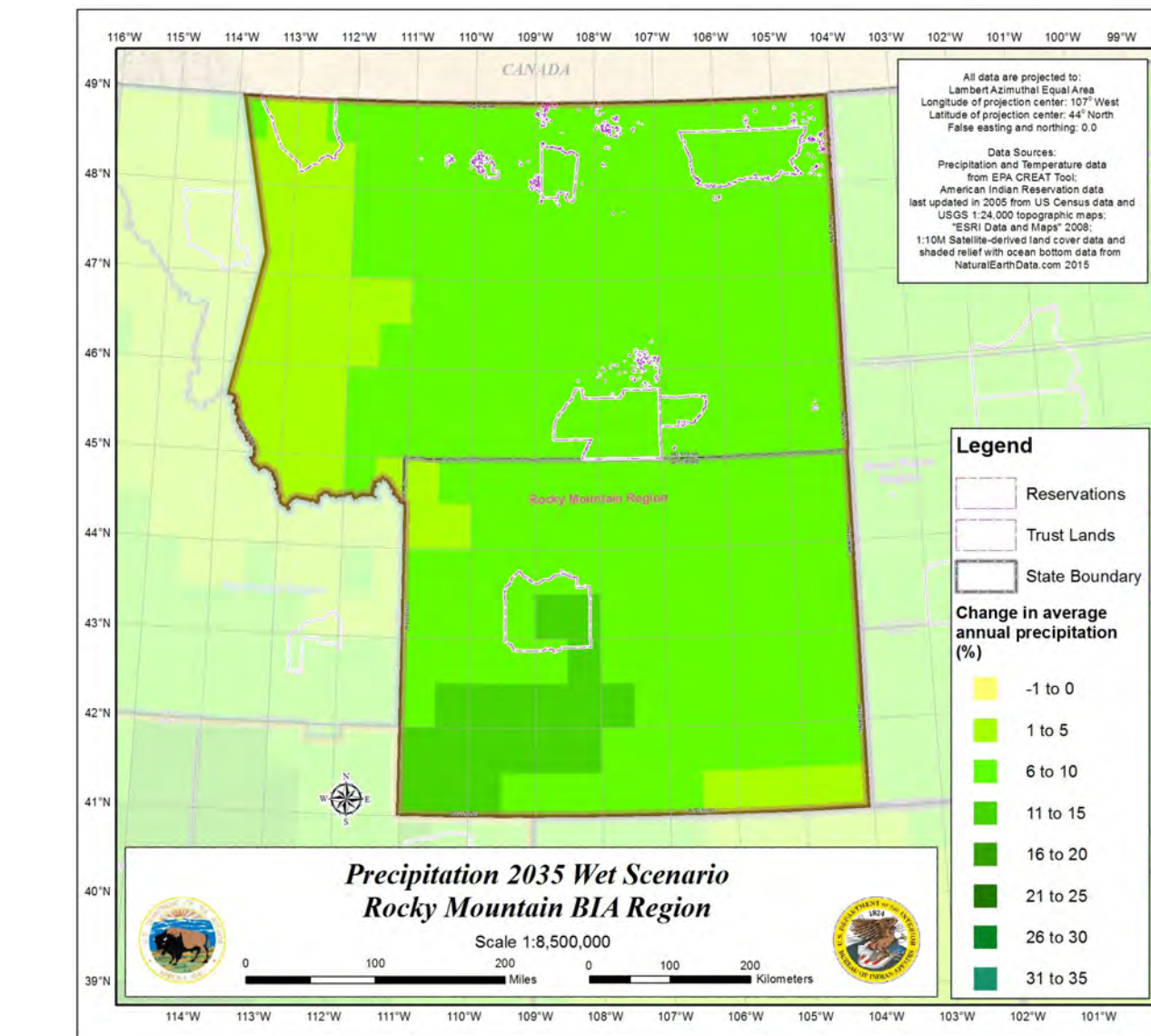
Dry 2060



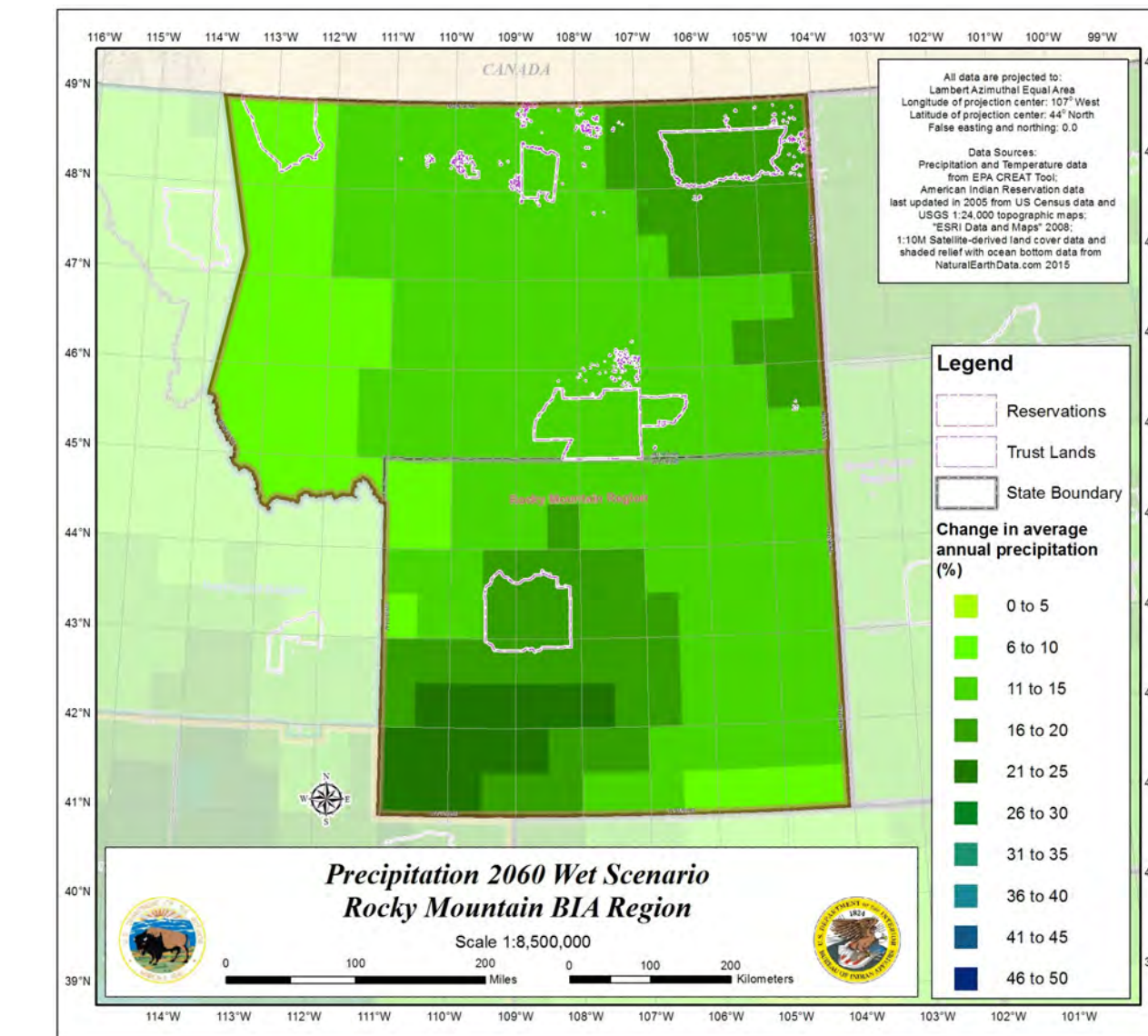
Central 2035



Central 2060

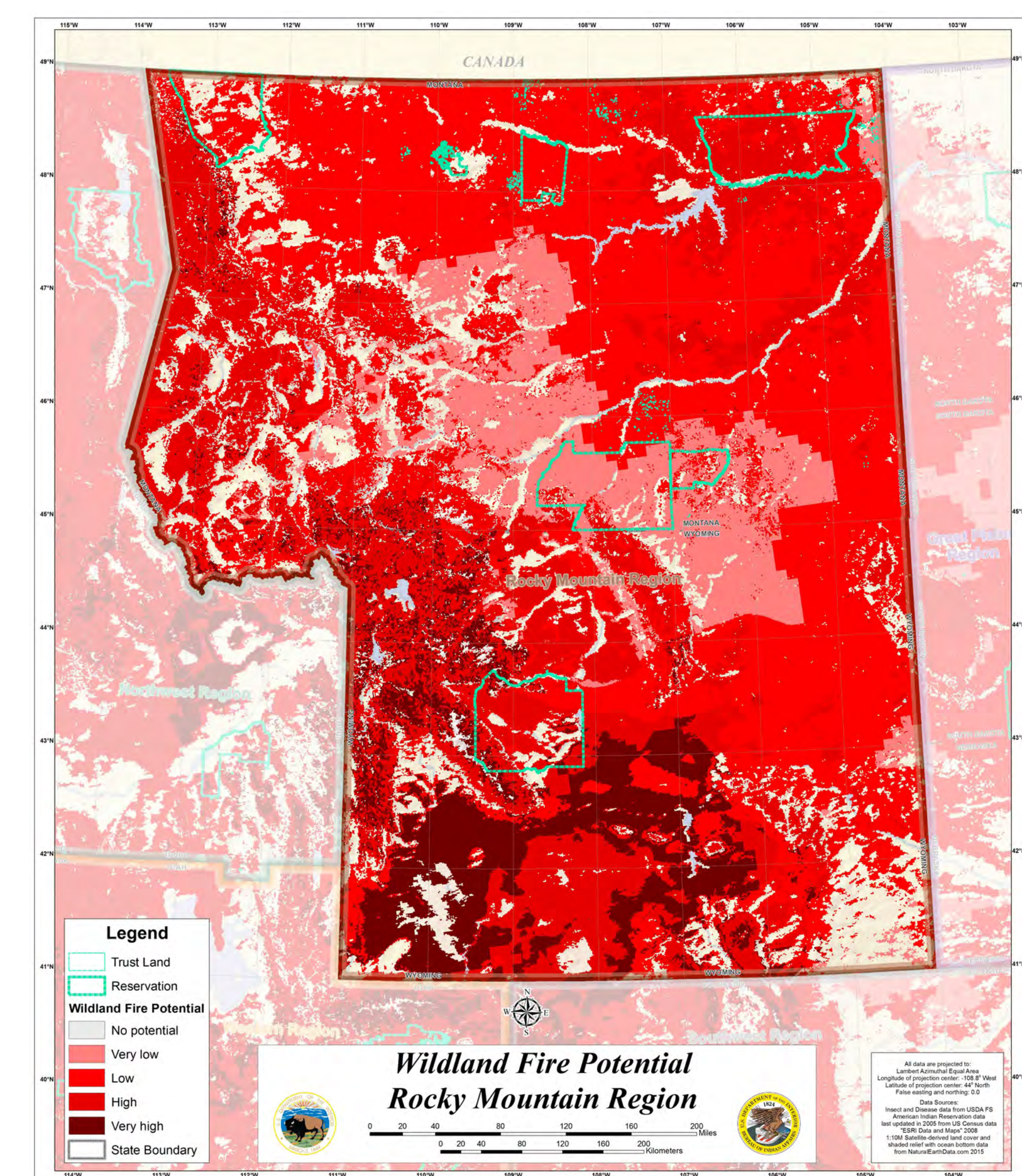


Wet 2035



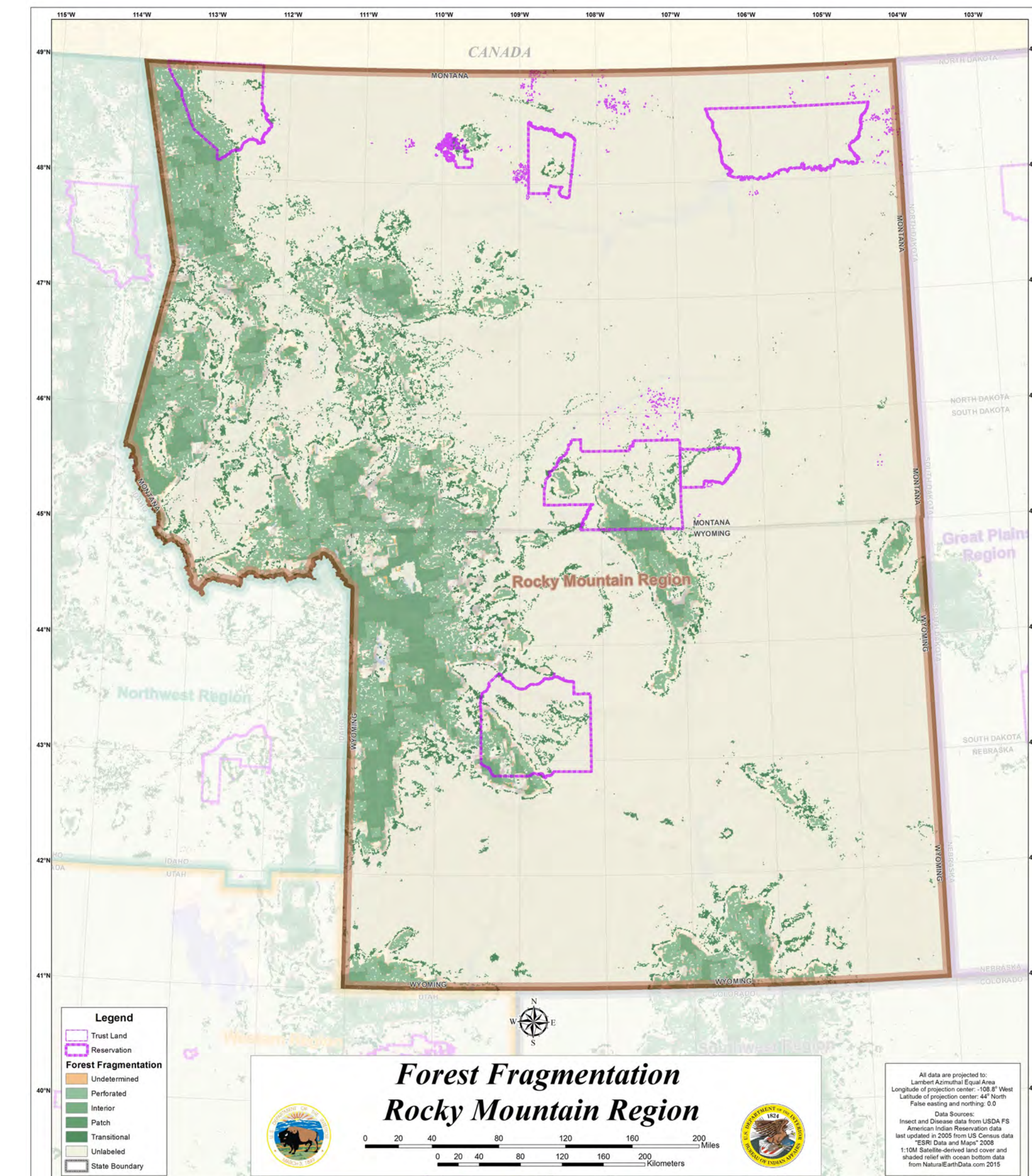
Wet 2060

Wildland Fire Potential



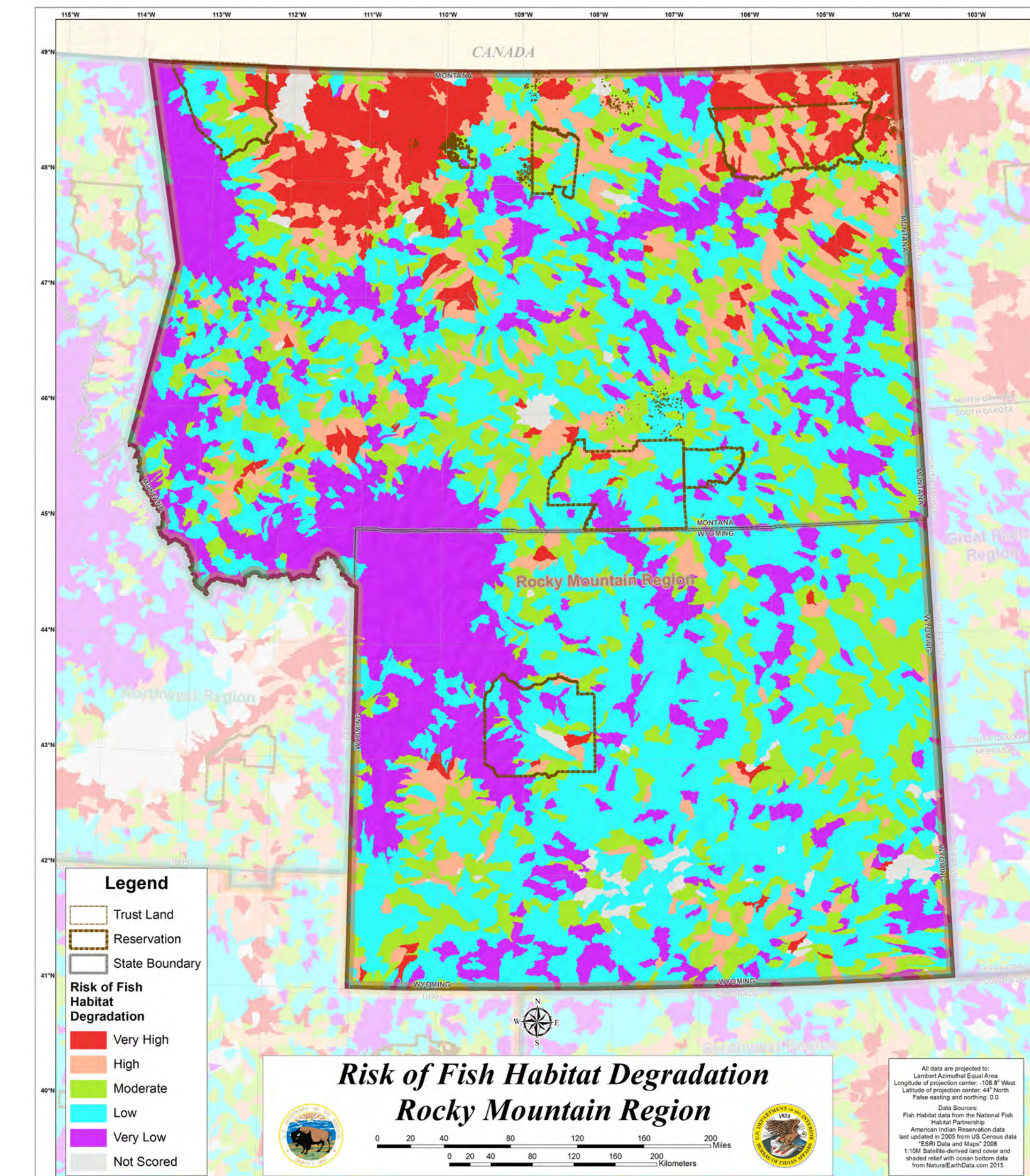
Data Source: USDA FS | https://data.fs.usda.gov/geodata/state_private/nationaldata

Forest Fragmentation



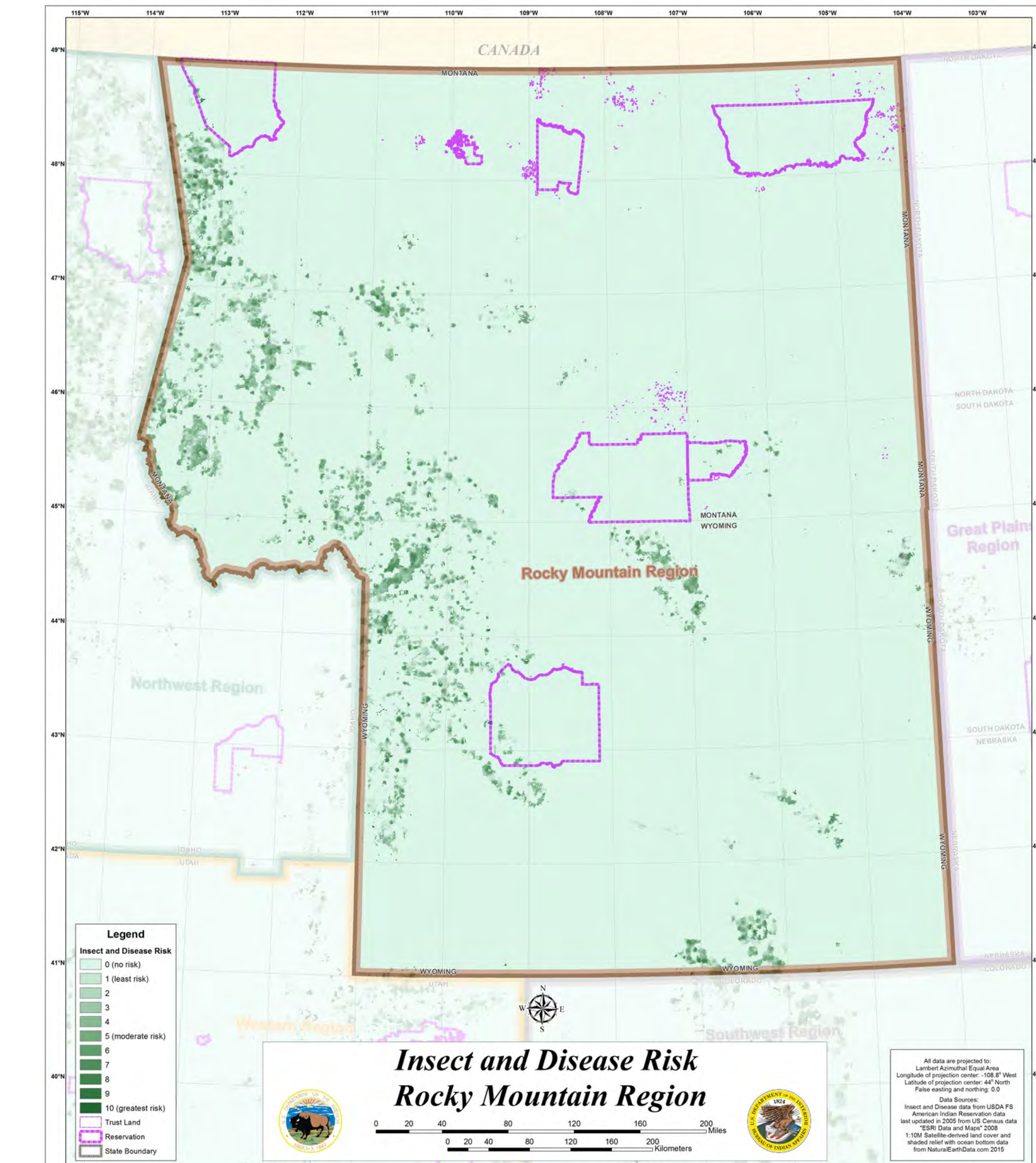
Data Source: USDA FS | https://data.fs.usda.gov/geodata/state_private/nationaldata

Risk of Fish Habitat Degradation



Data Source: National Fish Habitat Partnership | <https://ecosystems.usgs.gov/fishhabitat/viewdataset.asp?dbid=5069&cc=4075392&t=727>

Insect and Disease Risk



Data Source: USDA FS | https://data.fs.usda.gov/geodata/state_private/nationaldata