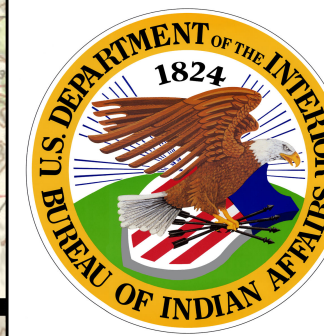


Bureau of Indian Affairs



Ute Mountain Ute Agency: Strategic Planning Map

[illegible]

FOR OFFICIAL USE ONLY (FOUO)

Ute Mountain Ute Agency Summary

The BIA, Ute Mountain Ute Reservation comprises 577,546 acres of Indian Tribal Lands in Colorado, New Mexico, and Utah. In Utah and Colorado there are tribal owned ranches that are excluded from this Fire Management Plan. The major portion of the reservation is located south of Cortez, Colorado. Scattered locations of the reservation are located northeast and northwest of the major portion of the reservation. The reservation borders Mesa Verde National Park on the east. Paved highways on the reservation are US Highway 160 and 491 and Colorado State Highway 41. There are two main gravel roads that cross the reservation, one follows Mancos River Canyon and the other goes west from Towaoc to the Cach Oilfield. Utah Highway 47 borders the reservation in Utah.


Reservation	Acres
Ute Mountain Reservation	577,546

Agency Contacts

Position	Agency/Tribal	Office Phone	Duties/Responsibilities
FWD	Ute Mountain Ute Agency	970-565-4789 * See Rocky Mtn Mbb Guide*	Coordinates suppression actions of all IA wildland fire resources. Initiates the WDFS process.
AFWD	Ute Mountain Ute Agency	970-565-4789 * See Rocky Mtn Mbb Guide*	Coordinates suppression actions of all IA wildland fire resources, assists FWD as duty officer
Aviation Operations	Ute Mountain Ute Agency	970-565-4789 * See Rocky Mtn Mbb Guide*	Coordinates all aviation operation for Ute Mountain Ute Agency.
UWA Sup1	Ute Mountain Ute Agency	970-565-8493	Signature required for WDFS decision exceeding wildland fire threshold involving trust land. Agency Ute Officer.
Center Mgr. Durango Dispatch	Durango Interagency Dispatch Center	970-385-1334 * See Rocky Mtn Mbb Guide*	Coordination and dispatch responsibility of interagency operations. Wildland fire resource planning and tracking.
RFWD	BIA SouthWest Regional Office	805-563-3385 * See Rocky Mtn Mbb Guide*	Regional coordination and administrative support between field units and BIA-NERC.
BLM	Mesa Dispatch	435-239-3851	Coordinates suppression actions for White Mesa BIA trust lands.

Ute Mountain Ute Agency Fire Management area contains two general areas of similar strategic objectives including: Asset Protection Unit (APU) and Resource Management Unit (RMU). Within these two defined areas, management strategies are further defined by Management Action Areas (MAA) with specific constraints, requirements, or guidelines as described below


Fire Management Units (FMU)

APU Asset Protection Unit-Wildland Urban Interface (WUI) 

Primary Objective: Protection of life/property, infrastructure, and high value resources without compromising firefighter safety. Wildland fire may be undesirable. Emphasize fuel treatments to create fire-adapted communities.

Primary Strategy/Operational Considerations:

- Place highest priority on the allocation of available suppression forces to fires threatening sites in the APU over fires in RMU or WMU.
- The perimeter control will receive highest priority for suppression resources. Confinement and fire use will be limited, maybe utilized in rare occasions, based on site-specific circumstances with documented direction from line officer.
- Examples include confining fire to a designated area to treat fuels once structures are secure or if fire is burning away from structures towards RMU.
- Place highest priority on fuels treatments over RMU or WMU to create defensible space and increase landscape resiliency.

RMU-Resource Management Unit (Non-WUI) 

Primary Objective: Protection of life/property, infrastructure, and high value resources without compromising firefighter safety. Promote the use of fire as a desirable component of the ecosystem. Coordinate fuels treatments with proposed strategies for unplanned ignitions to protect values at risk and promote landscape resiliency.

Primary Strategy/Operational Considerations:

- Prioritize response to wildland fire over WMU but secondary to APU.
- Emphasize perimeter control where needed, and confinement/containment protection elsewhere (based on operational thresholds).
- Use of Wildland Fire to protect, maintain, and enhance natural and cultural resources is available within defined wetland and fuel moisture conditions with documented decision analysis and support process.
- Prioritize fuels treatments within the RMU to increase opportunities to use confinement and control protection as strategies near values at risk and promote landscape resiliency. Areas with high hazard and strategic location will be identified for fuels projects to reduce or moderate fire behavior, especially at preplanned strategically located management action points.
- Interagency Cooperator agreements must be in place to determine the management of wildfire threat occurring on or off trust lands.

Management Action Areas

[illegible]

Wildland Fire Decision Support System (WFDSS)

The Wildland Fire Decision Support System (WFDSS) will be used to determine values, probabilities, hazards, and risk for all fires exceeding initial response. In addition, all wildland fire events will be entered into WFDSS. The following DOI Agency Administrator Approval Requirements must be adhered to.

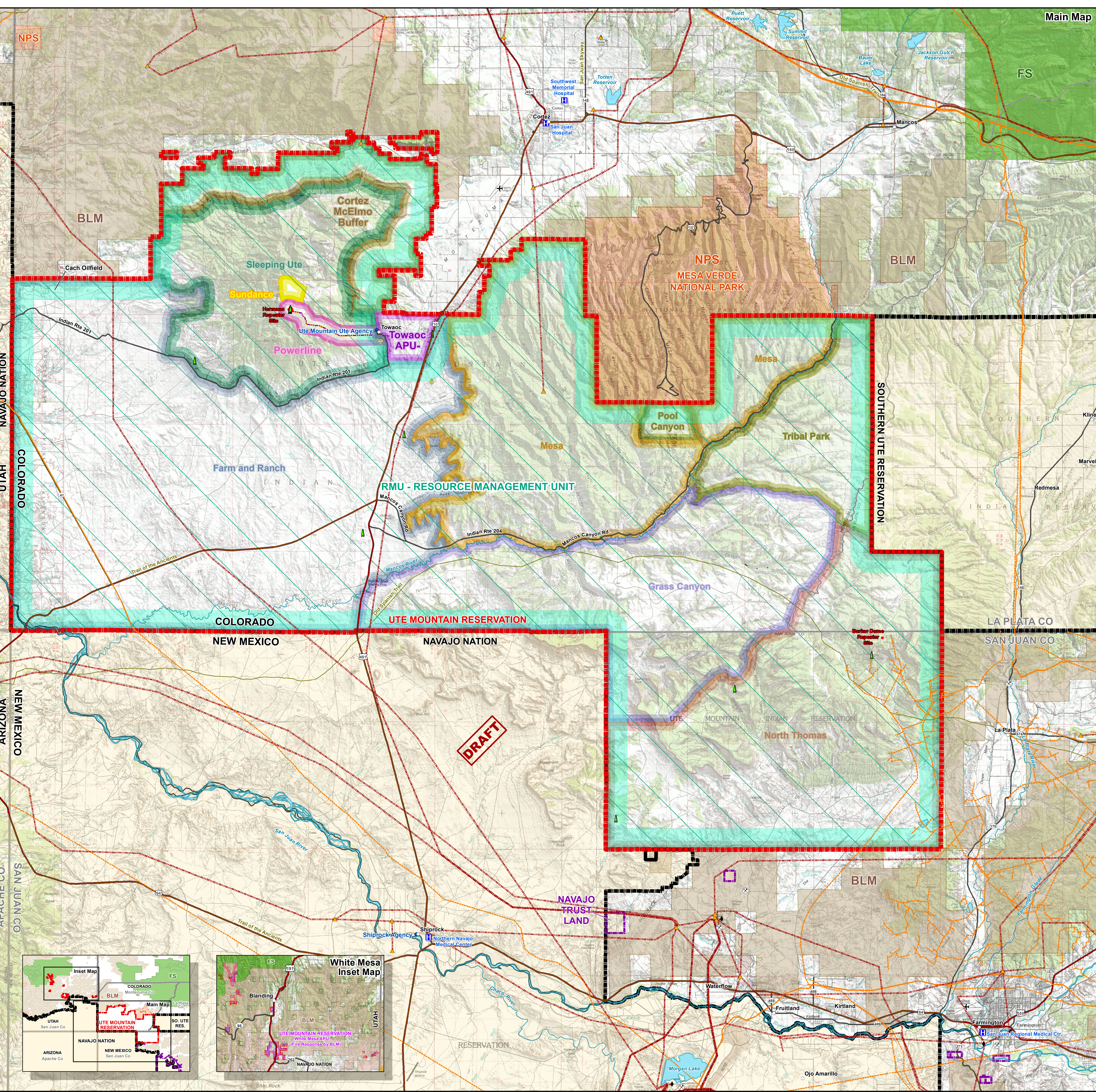
Cost Estimate	WFDSS Approval
Less than \$5 Million	Agency Superintendent, Park Superintendent, Field/District/Refuge Manager
\$5 Million - \$10 Million	State/Regional Director ²
Greater than \$10 Million	National Director ²

¹DOI- Cost estimate should be based on proportionate agency share of the total estimated cost of the incident. For example, on a Type I \$20 million fire that is 98% FS, 1% BLM, and 1% BIA, the USFS National Director and the BLM and BIA local agency administrators would be the certifying officials in a jointly published WFDSS decision.

*Reference - BIA Wildland Fire and Aviation Program Management and Operations Guide (Blue Book)

Legend

-
- Legend:**
- Airport**
 - Communication Tower**
 - Electric Substation**
 - Power Plant**
 - Helipoint**
 - Hospital**
 - City**
 - BIA Agency**
 - Transmission Line**
 - Oil Gas Pipeline**
 - FS - Forest Service**
 - BLM - Bureau of Land Management**
 - NPS - National Park Service**
 - Interstate**
 - Highway**
 - Major Road or Local Road**
 - National Trail**
 - American Indian Reservation**
 - Use Mountain Reservation**
 - Navajo Trust Land**
 - Critical Habitat**
 - Water Body**
 - Responder Site**
 - Fire Management Unit**
 - APU-Asset Protection Unit**
 - NPS Resource Management Unit**
 - Powerline**
 - Sundance**
 - Cortez McInnis Buffer**
 - Triple Peak & Pool Canyon**
 - Sleeping Ute**
 - Grass Canyon**
 - North Thoms**
 - Farm/Ranch**
 - Mosses & White Mesa (APU)**
- Scale:** 1:110,000
0 0.5 1.0 1.5 Miles
0 1 2 Kilometers
- DRAFT**
- Notes:**
by Office of Trust Services
Division of Water and Power
Questions regarding the data portrayed
in this map should be directed to:
Rene Anderson, 272-230-1210
Map Size: 30" x 42"
November 21, 2013 Version 3



Main Map