

NCLB Committee Meeting #2

Dormitory Standards Subcommittee

Report to The Committee

April 12, 2010

NCLB Mandate

Our committee charter includes authority to complete work that the first committee left undone. The earlier committee revised national standards for home-living (dormitory) situations, but not:

Part 1: the standards relating to heating, lighting, and cooling

Part 2: explanation to Congress how BIA will bring non-compliant facilities up to standards

25 U.S.C. § 2002 National criteria for home-living standards

(a) Revision of standards

• (1) In general

- The Secretary, in consultation with the Secretary of Education, Indian organizations and tribes, and Bureau-funded schools, shall revise the national standards for home-living (dormitory) situations to include such factors as
- heating, lighting, cooling, adult-child ratios, needs for counselors (including special needs related to off-reservation home-living (dormitory) situations), therapeutic programs, space, and privacy.

• (2) Implementation

- Such standards shall be implemented in Bureau-operated schools, and shall serve as minimum standards for contract or grant schools.

• (3) Revision after establishment

- Once established, any revisions of such standards shall be developed according to the requirements established under section 2017 of this title.

(b) Implementation

- The Secretary shall implement the revised standards established under this section immediately upon completion of the standards.

(c) Plan

• (1) In general

- The Secretary shall submit to the appropriate committees of Congress, the tribes, and the affected schools, and publish in the Federal Register, a detailed plan to bring all Bureau-funded schools that provide home-living (dormitory) situations up to the standards established under this section.

• (2) Components of plan

- The plan described in paragraph (1) shall include—
- (A) a statement of the relative needs of each Bureau-funded home-living (dormitory) school;
- (B) projected future needs of each Bureau funded home-living (dormitory) school;
- (C) detailed information on the status of each school in relation to the standards established under this section;
- (D) specific cost estimates for meeting each standard for each such school;
- (E) aggregate cost estimates for bringing all such schools into compliance with the criteria established under this section; and
- (F) specific timelines for bringing each school into compliance with such standards.

Part 1: Current Standards Used

Current BIA School Facilities Design Handbook establishes that BIA must comply with national construction standards that are appropriate for Indian School dormitories

OFMC related documents

- [BIA – OFMC School Facilities Design Handbook – \(03/30/2008\)](#)
- [Safety, Health and Accessibility Design Guidelines for Architects, Engineers and Design Firms dated 05/22/ 2008 V7\)](#)
- [BIA - OFMC Applicable Federal health and Safety Codes and Standards \(10/8/2009\)](#)
- [Final Safety and Health Inspection and Certificate of Occupancy Guidelines \(8/31/09\)](#)

Subcommittee Recommendation: Part 1: the standards relating to heating, lighting, and cooling

- 1) Status quo - BIA must continue to comply with national construction standards that are appropriate for Indian School dormitories. The Subcommittee cannot think of a reason why Indian school dorms should have different requirements than any other facilities.

Part 2: explanation to Congress how BIA will bring non-compliant facilities up to standards

- Our understanding is that developing “the Plan” is a task for OFMC.
- The Committee might opt to develop recommendations if it completes all of its assigned tasking.

The Subcommittee considered examples of how the current dorms standards are applied and updated.

HOW WE DID IT

HOMELIVING STANDARDS

NAVAJO PREPARATORY SCHOOL
Farmington, NM

Blending the old with contemporary...



Current process for bringing non-compliant facilities up to standards

- FMIS covers heating, lighting, and ventilation discrepancies
 - Contractors that do inspections capture non-compliant facilities
 - These are entered into FMIS
 - Updated through FMIS prioritization process

Planning



- Contemporary in design
- Responds to historic structures
- Geographical location
- Effective use of passive solar energy
- Hybrid structural system adapted to seasonal changes

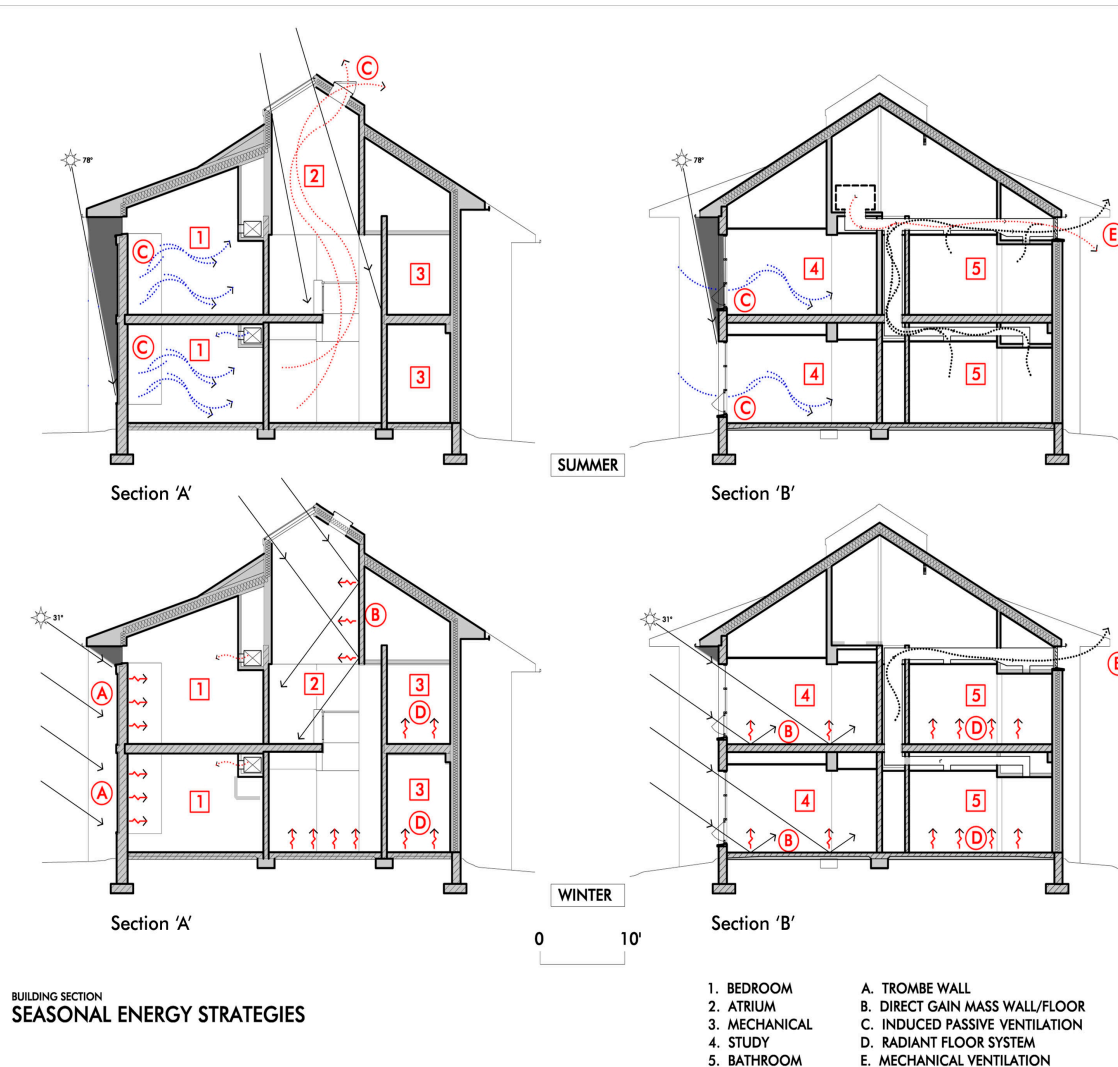


Interiors: Dormitory Spaces and Student Life

- Two Story
- 11,000+ Sq. ft.
- 2 students per room
- Neighborhoods of 4 bedrooms clusters – share one bath area
- One plumbing wall



Heating, Cooling & Ventilation



- Thick masonry trombe walls on south side (collects heat)
- Louvers on skylights for ventilation
- High thermal mass and passive solar techniques
- Radiant floor heating on north side
- Fan-coil units for heating on south side
- Natural day lighting
- Passive ventilation

Trombe Walls-Collect heat



Living Room: Designed similar to 8-sided Female Hogan



- Fire Place
- Student designed carpet
- Railing – basket NM design motif



- Skylit Space
- Banco Seating

HOW WE UPDATED HOMELIVING STANDARDS

Eufaula Dormitory

Eufaula OK

The Process

- Dorm built 1960s
- How discrepancies were identified
- How funding was secured
- How fixes were implemented

Committee comments or suggestions?