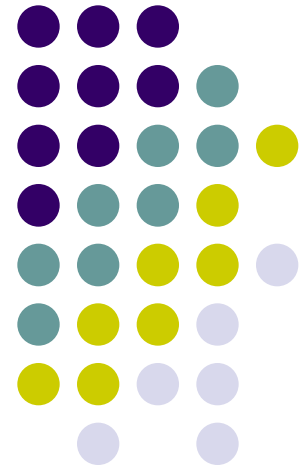


# FY 2011 Indian Affairs' President's Budget

---

Kevin Martin  
Acting Director, Office of Budget  
Management



# FY 2011 President's Budget



\$2,566M

-2% below FY 10 enacted level

No change after one-time funding

Congressional enacted level maintained

# FY 2011 Secretarial Priorities in Indian Affairs Budget



## Empowering Tribal Nations

- Advancing Nation-to-Nation Relationships: \$29.9M
- Protecting Indian Country: \$20.0M
- Advancing Indian Education: \$8.9M
- Improving Trust & Land Management: \$11.8M
  - New Energy Frontier \$2.5M
  - Climate Change Adaptation \$200K

# FY 2011

## Empowering Tribal Nations



Advancing Nation-to-Nation Relationships: \$29.9M

Contract Support & ISDF:	\$21.5M
Small & Needy Tribes:	\$2.95M
Social Workers:	\$2.0M
Self-Determination Specialists:	\$1.0M
Shellfish Settlement final adjustment:	\$1.5M
Data Management:	\$0.5M
Acquisition:	\$0.45M

# FY 2011

## Empowering Tribal Nations



Protecting Indian Country: \$20.0M

FBI Agents	\$19.0M
Detention Center Maintenance	\$ 1.0M

# FY 2011 Empowering Tribal Nations



<b>Advancing Indian Education:</b>	<b>\$8.9M</b>
ISEP Program Adjustments	\$3.9M
Environmental Audits	\$2.0M
Tribal Grant Support	\$3.0M

# FY 2011

## Empowering Tribal Nations



### Improving Trust & Land Management:

\$11.8M

- New Energy Frontier \$2.5M
- Climate Change Adaptation \$200K
- Trust Natural Resources \$1.2M
- Cadastral Surveys \$659K
- Probate \$1.879M
- Water programs \$1.5M
- Safety of Dams \$3.8M

# FY 2011 IA President's Budget



- Budget Supports Tribal Priorities

As defined by Tribal Budget Advisory Committee:

- Public Safety
- Education
- Economic Development (includes Energy)
- Natural Resources
- **Overarching: Contract Support**



# Reductions – 2011 budget

	\$ in Millions
One-time TCU forward funding	\$50.0M
Department-wide Savings	\$ 5.2M
Construction	\$55.4M
Probate Backlog (completed)	\$ 7.5M
Settlement Completed	\$ 2.4M
ILCA	\$ 2.0M
Efficiencies	\$ 1.7M

# Realignments of Programs

- Road Maintenance: \$26.4M
  - From: Community & Economic Development
  - To: Tribal Government
  
- Mineral & Mining: \$18.5M
  - From: Trust Natural Resources
  - To: Community & Economic Development

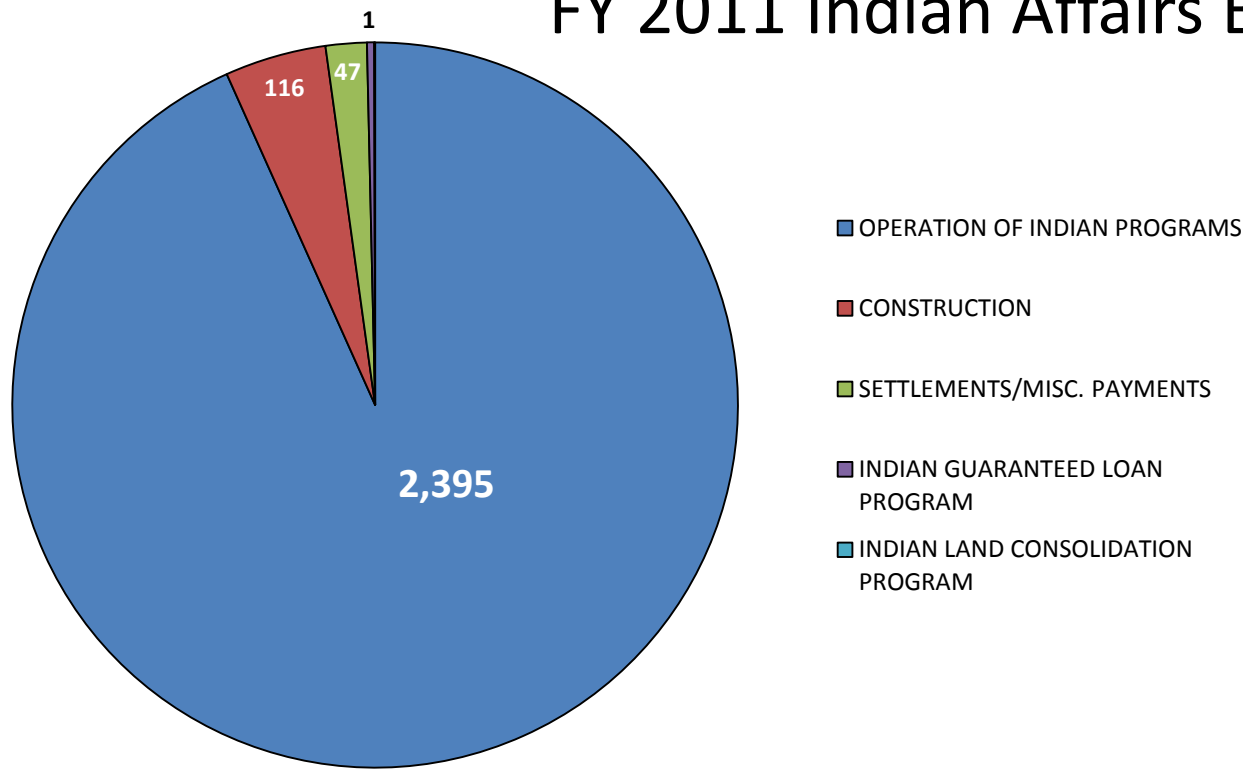
# Realignments of Programs

- Facilities Maintenance: \$50.7M
  - From: Education Construction
  - To: Education (Elem/Secondary)
  
- Facilities Maintenance: \$6.5M
  - From: PS&J Construction
  - To: Public Safety & Justice

# Realignments of Programs

- **Facilities Operations & Maintenance: \$6.3M**
  - From: Executive Direction & Admin
  - To: Public Safety & Justice

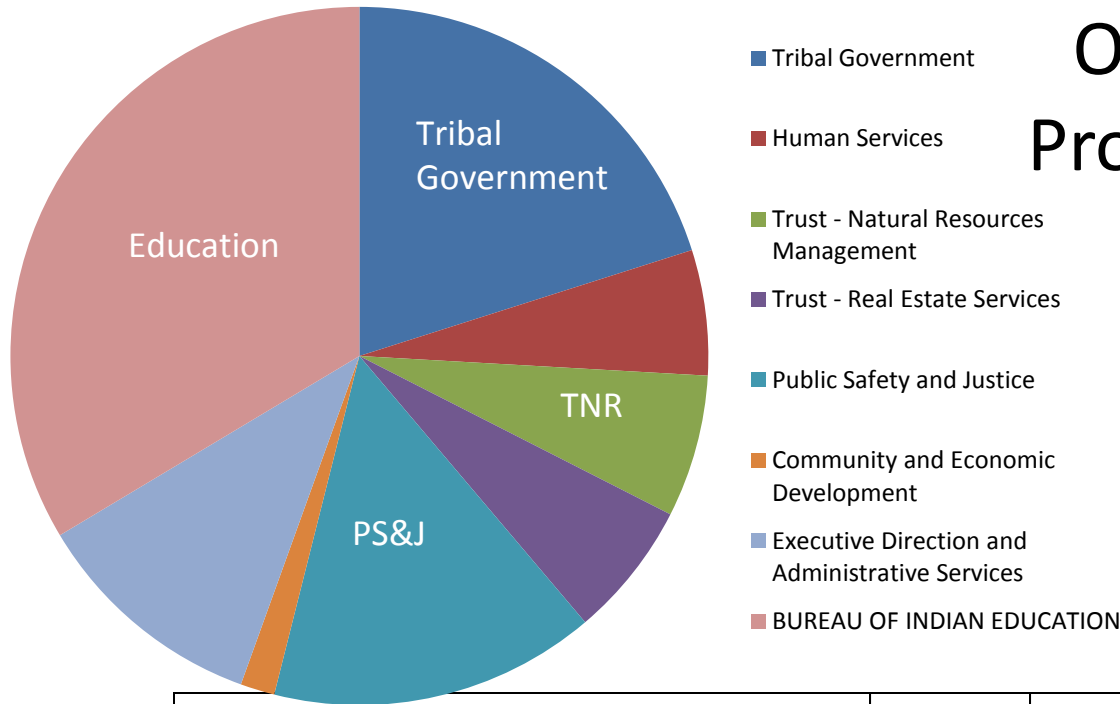
# FY 2011 Indian Affairs Budget Request



	FY2009	NET	FY 2010	NET	FY 2011
(\$ in Millions)	ENACTED	CHANGE	ENACTED	CHANGE	PRESIDENT'S BUDGET
<b>OPERATION OF INDIAN PROGRAMS</b>	2,128	+208	2,336	+59	2,395
<b>CONSTRUCTION</b>	218	+7	225	(109)	116
<b>SETTLEMENTS/MISC. PAYMENTS</b>	22	+25	47		47
<b>INDIAN GUARANTEED LOAN PROGRAM</b>	8	+0	8	+0	8
<b>INDIAN LAND CONSOLIDATION PROGRAM</b>	0	+3	3	(2)	1
<b>TOTAL, DIRECT APPROPRIATED FUNDS</b>	<b>2,376</b>	<b>+243</b>	<b>2,620</b>	<b>(52)</b>	<b>2,566</b>

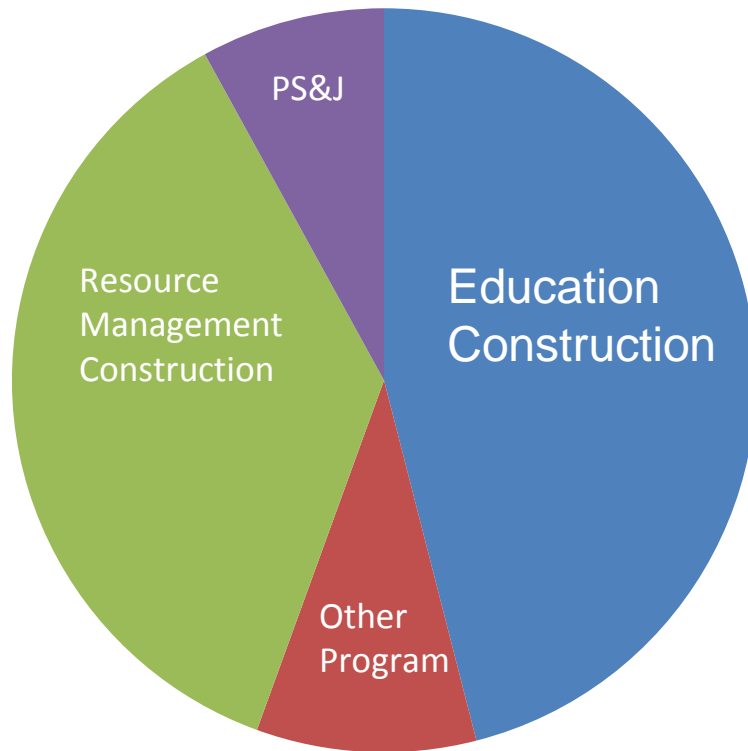
Program Changes: OIP: +6M; Construction: -\$51.6M; Settlements: -1M; ILCA: -2M;  
 One-time funding: \$50M; Efficiencies \$2M

# Operation of Indian Programs – By Activity



	FY 2009	Net	FY 2010	Net	FY 2011
	ENACTED	Change	ENACTED	Change	PRESIDENT'S
(\$ in Millions)					BUDGET
<b>Tribal Government</b>	<b>403</b>	<b>27</b>	<b>430</b>	<b>51</b>	<b>481</b>
<b>Human Services</b>	<b>137</b>	<b>0</b>	<b>137</b>	<b>2</b>	<b>139</b>
<b>Trust - Natural Resources Management</b>	<b>148</b>	<b>28</b>	<b>176</b>	<b>-18</b>	<b>158</b>
<b>Trust - Real Estate Services</b>	<b>150</b>	<b>2</b>	<b>152</b>	<b>-1</b>	<b>151</b>
<b>Public Safety and Justice</b>	<b>271</b>	<b>58</b>	<b>329</b>	<b>33</b>	<b>362</b>
<b>Community and Economic Development</b>	<b>44</b>	<b>1</b>	<b>45</b>	<b>-7</b>	<b>38</b>
<b>Executive Direction and Administrative Services</b>	<b>260</b>	<b>8</b>	<b>268</b>	<b>-7</b>	<b>261</b>
<b>BUREAU OF INDIAN EDUCATION</b>	<b>716</b>	<b>83</b>	<b>799</b>	<b>5</b>	<b>804</b>
<b>TOTAL, Operation of Indian Programs</b>	<b>2,129</b>	<b>207</b>	<b>2,336</b>	<b>58</b>	<b>2,394</b>

Pgm Changes: TG: +26M; HS: +2M; TNR: +1.9M; PS&J: +\$20M; EDUC: +\$6.9M



## Construction By Activity

	FY 2009	Net	FY 2010	Net	FY 2011
	Enacted	Change	Enacted	Change	Pres Budget
<b>Education Construction</b>	129	(16)	113	(60)	53
<b>Public Safety and Justice Construction</b>	39	+25	64	(53)	11
<b>Resources Management Construction</b>	40	(2)	38	+4	42
<b>Other Program Construction</b>	9	+0	9	+0	9
<b>TOTAL, CONSTRUCTION</b>	<b>217</b>	<b>+8</b>	<b>225</b>	<b>(109)</b>	<b>116</b>

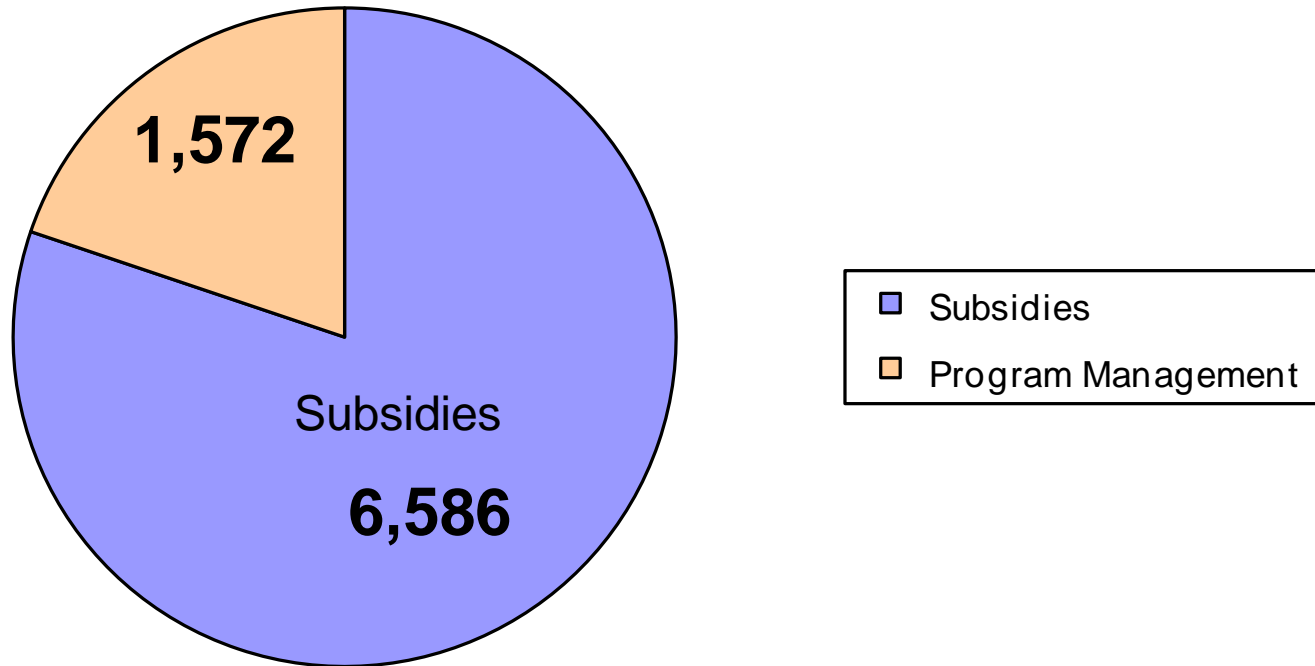
Replacement School: Dennehotso Phase II, Chinle, AZ;  
 Replacement Facility: Riverside Indian School Phase I, Riverside, OK  
 Reductions: ~\$55M; Realignment: ~\$58M

# Land & Water Settlements/Miscellaneous Payments

	FY 2009	Net	FY 2010	Net	FY 2011
	Enacted	Change	Enacted	Change	Pres Budget
<b>Land Settlements:</b>					
White Earth Land Settlement Act (Adm.)	625		625		625
Hoopa-Yurok Settlement	250		250		250
<b>Water Settlements:</b>					
Pyramid Lake Water Rights Settlement	142		142		142
Nez Perce/Snake River	15,210	+253	15,463		15,463
Navajo Water Resources Development Trust Fund		+6,000	6,000		6,000
Duck Valley Water Rights Settlement		+12,000	12,000		12,000
<b>Miscellaneous Payments:</b>					
Puget Sound Regional Shellfish Settlement	3,000	+2,000	5,000	+1,500	6,500
Pueblo of Isleta Settlement	2,400		2,400	(2,400)	
Soboba Band of Luiseno Indians Settlement		+5,500	5,500		5,500
<b>TOTAL, SETTLEMENTS/MISC. PAYMENTS</b>	21,627	+25,753	47,380	(900)	46,480



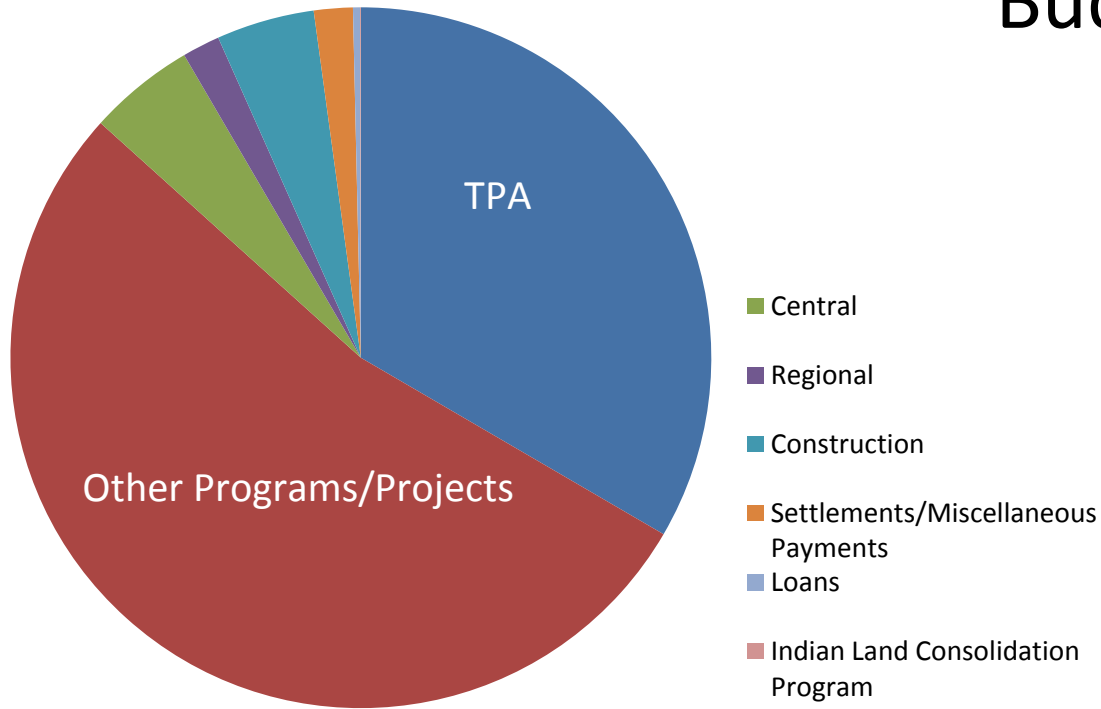
# Indian Guaranteed Loan Program



					FY 2011
	FY 2009	Net	FY 2010	Net	Pres
	Enacted	Change	Enacted	Change	Budget
Subsidies	6,586		6,586		6,586
Program Management	1,600	+29	1,629	(57)	1,572
<b>INDIAN GUARANTEED LOANS PRG</b>	8,186	+29	8,215	(57)	8,158

No Program Changes

# Budget Distribution

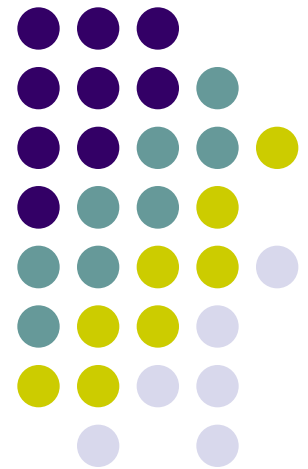


**TPA changes:**

- Contract Spt: +\$19.5M
- ISDF: +\$ 2.0M
- Small & Needy: +\$ 3.0M
- Social Workers: +\$ 2.0M
- “Bennett Freeze”: +\$ 1.2M
- Energy: +\$ 1.0M

	FY 2009	Net	FY 2010	Net	FY 2011
	ENACTED	Changes	ENACTED	Changes	PRESIDENT'S BUDGET
<b>Tribal Priority Allocations</b>	786	43	829	28	857
<b>Other Programs/Projects</b>	1,180	151	1,331	36	1,367
<b>Central</b>	119	12	131	-5	126
<b>Regional</b>	43	2	45	0	45
<b>Construction</b>	218	7	225	-109	116
<b>Settlements/Miscellaneous Payments</b>	22	25	47	-1	46
<b>Loans</b>	8	0	8	0	8
<b>Indian Land Consolidation Program</b>		3	3	-2	1
<b>Total :</b>	<b>2,376</b>	<b>243</b>	<b>2,619</b>	<b>-53</b>	<b>2,566</b>

# Questions?



[http://www.doi.gov/budget/2011/data/greenbook/FY2011\\_IA\\_Greenbook.pdf](http://www.doi.gov/budget/2011/data/greenbook/FY2011_IA_Greenbook.pdf)