

**ACTIVITIES**

**Subactivities  
Program Elements**

**2010      Net      2011      Net      2012  
Enacted   Changes   Enacted   Changes   Enacted**

	<b>2010 Enacted</b>	<b>Net Changes</b>	<b>2011 Enacted</b>	<b>Net Changes</b>	<b>2012 Enacted</b>
Operation of Indian Programs	2,336	-6	2,330	2,365,408	2,367,738
Construction	225	-15	210	123,420	123,630
Settlements/Misc. Payments	47	46,340	46,387	-13,585	32,802
Indian Guaranteed Loan Program	8	8,191	8,199	-1,096	7,103
Indian Land Consolidation Program	3	-3	0	0	0
<b>TOTAL, DIRECT APPROPRIATED FUNDS</b>	<b>2,620</b>	<b>54,506</b>	<b>2,594,012</b>	<b>-62,739</b>	<b>2,531,273</b>

<b>(\$ in Millions)</b>	<b>2010 Enacted</b>	<b>Net Changes</b>	<b>2011 Enacted</b>	<b>Net Changes</b>	<b>2012 Enacted</b>
Tribal Government	430	79	509	10	519
Human Services	137	-1	136	0	136
Trust - Natural Resources Management	176	-20	156	1	157
Trust - Real Estate Services	152	-7	145	-19	126
Public Safety and Justice	329	5	334	12	346
Community and Economic Development	45	-9	36	-2	34
Executive Direction and Administrative Services	268	-10	258	104	362
Bureau of Indian Education	799	-47	752	43	795
<b>Total, Operation of Indian Programs</b>	<b>2,336</b>	<b>-10</b>	<b>2,326</b>	<b>149</b>	<b>2,475</b>

**TRIBAL GOVERNMENT**

	<b>2010 Enacted</b>	<b>Net Changes</b>	<b>2011 Enacted</b>	<b>Net Changes</b>	<b>2012 Enacted</b>
Aid to Tribal Government (TPA)	33	31,853	31,886	-1,394	30,492
Consolidated Tribal Gov't Program (TPA)	72	71,638	71,710	4,688	76,398
Self Governance Compacts (TPA)	148	148,803	148,951	5,885	154,836
Contract Support (TPA)	166	219,394	219,560	-351	219,209
Indian Self-Determination Fund (TPA)	2	1,994	1,996	1	1,997
New Tribes (TPA)	*		310	4	314
Small & Needy Tribes (TPA)		0		1,947	1,947
Road Maintenance (TPA)		26,390	26,390	-1,000	25,390
Tribal Government Program Oversight	9	8,777	8,786	-38	8,748
<b>Total, Tribal Government</b>	<b>429</b>	<b>508,850</b>	<b>509,589</b>	<b>9,742</b>	<b>519,331</b>

**HUMAN SERVICES**

	<b>2010 Enacted</b>	<b>Net Changes</b>	<b>2011 Enacted</b>	<b>Net Changes</b>	<b>2012 Enacted</b>
Social Services (TPA)	34	33,845	33,879	445	34,324
Welfare Assistance (TPA)	75	74,686	74,761	30	74,791
Indian Child Welfare Act (TPA)	11	11,042	11,053	-203	10,850
Housing Improvement Program (TPA)	13	12,585	12,598	1	12,599
Human Services Tribal Design (TPA)	0	430	430	-1	429
Human Services Program Oversight	4	3,896	3,900	-533	3,367
<b>Total, Human Services</b>	<b>137</b>	<b>136,484</b>	<b>136,621</b>	<b>-261</b>	<b>136,360</b>

**TRUST - NATURAL RESOURCES MANAGEMENT**

	<b>2010 Enacted</b>	<b>Net Changes</b>	<b>2011 Enacted</b>	<b>Net Changes</b>	<b>2012 Enacted</b>
Natural Resources (TPA)	4	4,543	4,547	569	5,116
Irrigation Operations and Maintenance	12	11,898	11,910	10	11,920

Rights Protection Implementation	30	28,412	28,442	534	28,976
Tribal Management/Development Program	6	6,776	6,782	923	7,705
Endangered Species	1	1,247	1,248	-3	1,245
Cooperative Landscape Conservation	2	417	419	-219	200
Integrated Resource Info Program	29	2,076	2,105	1	2,106
Agriculture & Range	44	28,819	28,863	-27	28,836
Forestry	10	43,634	43,644	-70	43,574
Water Resources	11	10,139	10,150	-16	10,134
Fish, Wildlife and Parks	19	11,321	11,340	-18	11,322
Resource Management Program Oversight	7	6,625	6,632	-521	6,111
<b>Total, Trust-Natural Resources Management</b>	<b>175</b>	<b>155,907</b>	156,082	1,163	157,245

#### TRUST - REAL ESTATE SERVICES

	2010 Enacted	Net Changes	2011 Enacted	Net Changes	2012 Enacted
Trust Services (TPA)	10	9,630	9,640	1,342	10,982
Navajo-Hopi Settlement Program	1	1,223	1,224	-20	1,204
Probate (TPA)	13	13,045	13,058	-330	12,728
Land Title and Records Offices	15	14,481	14,496	-83	14,413
Real Estate Services	48	48,008	48,056	-10,364	37,692
Land Records Improvement	15	15,226	15,241	-8,459	6,782
Environmental Quality	15	14,653	14,668	1,839	16,507
Alaskan Native Programs	1	1,030	1,031	1	1,032
Rights Protection	12	11,990	12,002	-1,119	10,883
Trust - Real Estate Services Oversight	15	16,390	16,405	-1,869	14,536
<b>Total, Trust-Real Estate Services</b>	<b>145</b>	<b>145,676</b>	<b>145,821</b>	<b>-19,062</b>	<b>126,759</b>

#### PUBLIC SAFETY AND JUSTICE

	2010 Enacted	Net Changes	2011 Enacted	Net Changes	2012 Enacted
Law Enforcement	228	305,665	305,893	16,051	321,944

Criminal Investigations and Police Services	137	185,178	185,315	-297	185,018
Detention/Corrections	64	74,428	74,492	7,318	81,810
Inspections/Internal Affairs	3	3,191	3,194	-94	3,100
Law Enforcement Special Initiatives	14	17,738	17,752	-352	17,400
Indian Police Academy	4	5,129	5,133	-60	5,073
Tribal Justice Support	1	3,287	3,288	2,353	5,641
Law Enforcement Program Management	5	10,471	10,476	-331	10,145
Facilities Operations & Maintenance		6,243	6,243	7,514	13,757
Tribal Courts (TPA)	14	27,074	27,088	-3,681	23,407
Fire Protection (TPA)	1	1,108	1,109	-237	872
<b>Total, Public Safety and Justice</b>	<b>471</b>	<b>639,512</b>	<b>334,090</b>	<b>12,133</b>	<b>346,223</b>

#### COMMUNITY and ECONOMIC DEVELOPMENT

	2010 Enacted	Net Changes	2011 Enacted	Net Changes	2012 Enacted
Job Placement and Training (TPA)	12	11,540	11,552	-50	11,502
Economic Development (TPA)	2	2,369	2,371	-29	2,342
Road Maintenance (TPA)	26	-26			
Community Development	0	1,397	1,397	-1,397	
Minerals and Mining			18,461	199	18,660
Community Development Oversight	1	3,074	3,075	-769	2,306
<b>Total, Community and Economic Development</b>	<b>41</b>	<b>18,354</b>	<b>36,856</b>	<b>-2,046</b>	<b>34,810</b>

#### EXECUTIVE DIRECTION and ADMINISTRATIVE SERVICES

	2010 Enacted	Net Changes	2011 Enacted	Net Changes	2012 Enacted
Assistant Secretary Support	12	10,615	10,627	646	11,273
Executive Direction	21	20,047	20,068	-710	19,358

Administrative Services	51	52,873	52,924	-1,316	51,608
Safety and Risk Management	2	1,806	1,808	-25	1,783
Information Resources Technology	60	57,352	57,412	-3,427	53,985
Human Capital Management	31	30,831	30,862	-227	30,635
Facilities Management	25	18,380	18,405	-466	17,939
Intra-Governmental Payments	28	28,015	28,043	-3,377	24,666
Rentals [GSA/Direct]	38	37,902	37,940	2,343	40,283
<b>Total, Executive Direction &amp; Administrative Svcs</b>	<b>268</b>	<b>257,821</b>	<b>258,089</b>	<b>-6,559</b>	<b>251,530</b>

TOTAL, BUREAU OF INDIAN AFFAIRS 1,577,148 -4,890 1,572,258

#### BUREAU OF INDIAN EDUCATION

	2010 Enacted	Net Changes	2011 Enacted	Net Changes	2012 Enacted
Elementary and Secondary (forward funded)	519	519,529	520,048	2,199	522,247
Elementary/Secondary Programs	77	76,862	76,939	45,595	122,534
Post Secondary Programs (forward funded)	50	64,142	64,192	3,101	67,293
Post Secondary Programs	127	61,476	61,603	-168	61,435
Education Management	27	29,889	29,916	-7,945	21,971
<b>TOTAL, BUREAU OF INDIAN EDUCATION</b>	<b>800</b>	<b>751,898</b>	<b>752,698</b>	<b>42,782</b>	<b>795,480</b>

	2010 Enacted	Net Changes	2011 Enacted	Net Changes	2012 Enacted
Indian Arts and Crafts Board					
<b>TOTAL, Indian Arts and Crafts Board</b>					

#### CONSTRUCTION

	2010 Enacted	Net Changes	2011 Enacted	Net Changes	2012 Enacted
Education Construction	113	140,396	140,509	-69,683	70,826

Public Safety and Justice Construction	64	17,800	17,864	-6,553	11,311
Resources Management Construction	38	42,037	42,075	-9,116	32,959
Other Program Construction	9	9,123	9,132	-598	8,534
<b>TOTAL, CONSTRUCTION</b>	<b>225</b>	<b>209,355</b>	<b>209,580</b>	<b>-85,950</b>	<b>123,630</b>

	<b>2010 Enacted</b>	<b>Net Changes</b>	<b>2011 Enacted</b>	<b>Net Changes</b>	<b>2012 Enacted</b>
<b>Land Settlements:</b>					
White Earth Land Settlement Act (Adm.)	625	-1	624	0	624
Hoopa-Yurok Settlement	250	0	250	0	250
<b>Water Settlements:</b>					
Pyramid Lake Water Rights Settlement	142	0	142	0	142
Nez Perce/Snake River	15,463	-31	15,432	-5,997	9,435
Navajo Water Resources Development Trust Fund	6,000	-12	5,988	2	5,990
Navajo-Gallup Water Supply Project		0		4,381	4,381
Duck Valley Water Rights Settlement	12,000	-24	11,976	4	11,980
<b>Miscellaneous Payments:</b>					
Puget Sound Regional Shellfish Settlement	5,000	1,487	6,487	-6,487	
Soboba Band of Luiseno Indians Settlement	5,500	-12	5,488	-5,488	
<b>TOTAL, SETTLEMENTS/MISC. PAYMENTS</b>	<b>44,980</b>	<b>1,407</b>	<b>46,387</b>	<b>-13,585</b>	<b>32,802</b>

	<b>2010 Enacted</b>	<b>Net Changes</b>	<b>2011 Enacted</b>	<b>Net Changes</b>	<b>2012 Enacted</b>
Subsidies	6,586	-13	6,573	-433	6,140
Program Management	1,629	-3	1,626	-663	963
<b>TOTAL, INDIAN GUARANTEED LOAN PROGRAM</b>	<b>8,215</b>	<b>-16</b>	<b>8,199</b>	<b>-1,096</b>	<b>7,103</b>

<b>2010 Enacted</b>	<b>Net Changes</b>
774	-774

1,111	-1,111
118	-118
44	-44
204	-204
34	-34
6	-6
<b>2,291</b>	<b>-2,291</b>

**Overview**

<b>(\$ in Millions)</b>	<b>FY 2011 Enacted</b>	<b>Net Changes</b>	<b>FY 2012 Enacted</b>	<b>Net Changes</b>	<b>FY 2013 Enacted</b>
OPERATION OF INDIAN PROGRAMS	2,048	81	2,129	207	2,336
CONSTRUCTION	204	14	218	7	225
SETTLEMENTS/MISC. PAYMENTS	34	-12	22	26	47
INDIAN GUARANTEED LOAN PROGRAM	6	2	8	0	8
INDIAN LAND CONSOLIDATION PROGRAM	* [10]		* [0]	3	3
<b>TOTAL, DIRECT APPROPRIATED FUNDS</b>	<b>2,291</b>	<b>85</b>	<b>2,376</b>	<b>243</b>	<b>2,620</b>



<b>(\$ in Millions)</b>	<b>FY 2008 Enacted</b>	<b>Net Change</b>	<b>FY 2009 Enacted</b>	<b>Net Change</b>	<b>FY 2010 Enacted</b>
Tribal Government	400	3	403	27	430
Human Services	139	-2	137	0	137
Trust - Natural Resources Management	147	1	148	28	176
Trust - Real Estate Services	148	2	150	2	152
Public Safety and Justice	244	27	271	58	329
Community and Economic Development	39	4	44	1	45
Executive Direction and Administrative Services	240	20	260	8	268
BUREAU OF INDIAN EDUCATION	690	27	716	83	799
<b>TOTAL, Operation of Indian Programs</b>	<b>2,048</b>	<b>81</b>	<b>2,129</b>	<b>208</b>	<b>2,336</b>

<b>(\$ in Millions)</b>	<b>FY 2008 Enacted</b>	<b>Net Change</b>	<b>FY 2009 Enacted</b>	<b>Net Change</b>	<b>FY 2010 Enacted</b>
Aid to Tribal Government (TPA)	33	1	34	0	33
Consolidated Tribal Gov't Program (TPA)	68	1	69	3	72
Self Governance Compacts (TPA)	143	1	144	3	148
Contract Support (TPA)	147	0	147	19	166
Indian Self-Determination Fund (TPA)	0	0	0	2	2
New Tribes (TPA)	*	0	*	0	*
Tribal Government Program Oversight	8	1	8	1	9
<b>Total, Tribal Government</b>	<b>400</b>	<b>3</b>	<b>403</b>	<b>27</b>	<b>429</b>

<b>(\$ in Millions)</b>	<b>FY 2008 Enacted</b>	<b>Net Change</b>	<b>FY 2009 Enacted</b>	<b>Net Change</b>	<b>FY 2010 Enacted</b>
Social Services (TPA)	32	2	34	0	34
Welfare Assistance (TPA)	79	-4	75	0	75
Indian Child Welfare Act (TPA)	11		11	0	11
Housing Improvement Program (TPA)	14	0	14	-1	13
Human Services Tribal Design (TPA)	0		0	0	0
Human Services Program Oversight	4		4	0	4
<b>Total, Human Services</b>	<b>139</b>	<b>-2</b>	<b>137</b>	<b>0</b>	<b>137</b>

<b>(\$ in Millions)</b>	<b>FY 2008 Enacted</b>	<b>Net Change</b>	<b>FY 2009 Enacted</b>	<b>Net Change</b>	<b>FY 2010 Enacted</b>
Natural Resources (UTB) (TPA)	4		4	0	4
Irrigation Operations and Maintenance	12		12	0	12
Rights Protection Implementation	20	-2	18	12	30
Tribal Management/Development Program	6	0	6	0	6
Endangered Species (UTB)	1		1	0	1
Integrated Resource Info Program (UTB)	1	1	2	0	2
Agriculture & Range (UTB)	24		24	5	29
Forestry (UTB)	43		43	1	44
Water Resources (partial UTB)	10		10	0	10
Fish, Wildlife and Parks (UTB)	6	1	7	4	11
Minerals and Mining (UTB)	11	1	12	7	19
Resource Management Program Oversight (UTB)	8	-1	7	0	7
<b>Total, Trust-Natural Resources Management</b>	<b>147</b>	<b>1</b>	<b>148</b>	<b>27</b>	<b>175</b>

(\$ in Millions)	FY 2008 Enacted	Net Change	FY 2009 Enacted	Net Change	FY 2010 Enacted
Trust Services (UTB) (TPA)	10	1	11	-1	10
Navajo-Hopi Settlement Program	1		1	0	1
Probate (UTB) (TPA)	9	4	13	0	13
Probate Backlog (UTB)	11	-3	7	0	7
Land Title and Records Offices (UTB)	14		15	0	15
Real Estate Services (UTB)	47	1	48	0	48
Land Records Improvement (UTB)	16		16	0	15
Environmental Quality (UTB)	11	1	12	3	15
Alaskan Native Programs	1		1	0	1
Rights Protection	12	-1	11	1	12
Trust - Real Estate Services Oversight (UTB)	15		15	0	15
<b>Total, Trust-Real Estate Services</b>	<b>148</b>	<b>2</b>	<b>150</b>	<b>2</b>	<b>152</b>

<b>(\$ in Millions)</b>	<b>FY 2008 Enacted</b>	<b>Net Change</b>	<b>FY 2009 Enacted</b>	<b>Net Change</b>	<b>FY 2010 Enacted</b>
<b>Law Enforcement</b>	<b>228</b>	<b>27</b>	<b>255</b>	<b>48</b>	<b>303</b>
Criminal Investigations and Police Services	137	26	163	12	175
Detention/Corrections	64	1	65	6	70
Inspections/Internal Affairs	3		3	0	3
Law Enforcement Special Initiatives	14	1	15	2	17
Indian Police Academy	4		4	0	4
Tribal Justice Support	1		1	4	6
Law Enforcement Program Management	5	-1	4	4	8
Law Enforcement P.L.110-293	0	0	0	20	20
<b>Tribal Courts (TPA)</b>	<b>14</b>		<b>15</b>	<b>5</b>	<b>20</b>
<b>Tribal Courts P.L. 110-293</b>	<b>0</b>	<b>0</b>	<b>0</b>	<b>5</b>	<b>5</b>
<b>Fire Protection (TPA)</b>	<b>1</b>		<b>1</b>	<b>0</b>	<b>1</b>
<b>Total, Public Safety and Justice</b>	<b>244</b>	<b>27</b>	<b>271</b>	<b>58</b>	<b>329</b>

<b>(\$ in Millions)</b>	<b>FY 2008 Enacted</b>	<b>Net Change</b>	<b>FY 2009 Enacted</b>	<b>Net Change</b>	<b>FY 2010 Enacted</b>
Job Placement and Training (TPA)	8	4	12	0	12
Economic Development (TPA)	5	-1	3	-1	2
Road Maintenance (TPA)	26		26	0	26
Community and Economic Development	0	0	0	1	1
Community Development	0		*		*
Community Development Oversight	1		2	1	3
<b>Total, Community and Economic Development</b>	<b>39</b>	<b>4</b>	<b>44</b>	<b>1</b>	<b>45</b>

<b>(\$ in Millions)</b>	<b>FY 2008 Enacted</b>	<b>Net Change</b>	<b>FY 2009 Enacted</b>	<b>Net Change</b>	<b>FY 2010 Enacted</b>
Assistant Secretary Support	10	1	11	1	12
Executive Direction	18	1	19	2	21
Administrative Services	49	1	50	1	51
Safety and Risk Management	1		1	1	2
Information Resources Technology (UTB)	53	7	60	0	60
Human Capital Management	29	2	31	0	31
Facilities Management	24	1	25	-1	25
Intra-Governmental Payments	22	4	27	2	28
Rentals [GSA/Direct]	34	3	37	1	38
<b>Total, Executive Direction &amp; Admin Svcs</b>	<b>240</b>	<b>20</b>	<b>260</b>	<b>8</b>	<b>268</b>



<b>(\$ in Millions)</b>	<b>FY 2008 Enacted</b>	<b>Net Change</b>	<b>FY 2009 Enacted</b>	<b>Net Change</b>	<b>FY 2010 Enacted</b>
Elementary and Secondary (forward funded)	480	20	499	20	519
Elementary/Secondary Programs	75	1	75	2	77
Post Secondary Programs (forward funded)	0		0	50	50
Post Secondary Programs	112	4	115	12	127
Education Management	23	3	26	0	27
<b>TOTAL, BUREAU OF INDIAN EDUCATION</b>	<b>690</b>	<b>27</b>	<b>716</b>	<b>84</b>	<b>800</b>

<b>(\$ in Millions)</b>	<b>FY 2008 Enacted</b>	<b>Net Change</b>	<b>FY 2009 Enacted</b>	<b>Net Change</b>	<b>FY 2010 Enacted</b>
Education Construction	143	-14	129	-16	113
Public Safety and Justice Construction	14	25	39	25	64
Resources Management Construction	38	2	40	-2	38
Other Program Construction	8	1	9	0	9
<b>TOTAL, CONSTRUCTION</b>	<b>204</b>	<b>14</b>	<b>218</b>	<b>7</b>	<b>225</b>

(\$ in Thousands)	FY 2008 Enacted	Net Change	FY 2009 Enacted	Net Change	FY 2010 Enacted
<b>Land Settlements:</b>		0		0	
White Earth Land Settlement Act (Adm.)	625	0	625	0	625
Hoopa-Yurok Settlement	250	0	250	0	250
<b>Water Settlements:</b>		0		0	
Pyramid Lake Water Rights Settlement	142	0	142	0	142
Nez Perce/Snake River	15,463	-253	15,210	253	15,463
Navajo Water Resources Development Trust Fund		0		6,000	6,000
Duck Valley Water Rights Settlement		0		12,000	12,000
<b>Miscellaneous Payments:</b>		0		0	
Rocky Boys O&M Trust Fund	7,500	-7,500	0	0	0
Puget Sound Regional Shellfish Settlement	7,000	-4,000	3,000	2,000	5,000
Pueblo of Isleta Settlement	2,400	0	2,400	0	2,400
Soboba Band of Luiseno Indians Settlement	0	0	0	5,500	5,500
Settlement Rounding Adjustment	158	-158	0	0	0
<b>TOTAL, SETTLEMENTS/MISC. PAYMENTS</b>	<b>33,538</b>	<b>-11,911</b>	<b>21,627</b>	<b>25,753</b>	<b>47,380</b>

(\$ in Thousands)	FY 2008 Enacted	Net Change	FY 2009 Enacted	Net Change	FY 2010 Enacted
Subsidies	5,489	1,097	6,586	0	6,586
Program Management	689	911	1,600	29	1,629
<b>TOTAL, INDIAN GUARANTEED LOAN PROGRAM</b>	<b>6,178</b>	<b>2,008</b>	<b>8,186</b>	<b>29</b>	<b>8,215</b>

## Overview

(\$ in Millions)	FY 2008 Enacted	Net Changes	FY 2009 Enacted	Net Changes	FY 2010 Enacted
OPERATION OF INDIAN PROGRAMS	2,048	81	2,129	207	2,336
CONSTRUCTION	204	14	218	7	225
SETTLEMENTS/MISC. PAYMENTS	34	-12	22	26	47
INDIAN GUARANTEED LOAN PROGRAM	6	2	8	0	8
INDIAN LAND CONSOLIDATION PROGRAM	* [10]		* [0]	3	3
<b>TOTAL, DIRECT APPROPRIATED FUNDS</b>	<b>2,291</b>	<b>85</b>	<b>2,376</b>	<b>243</b>	<b>2,620</b>

## OIP

(\$ in Millions)	FY 2008 Enacted	Net Change	FY 2009 Enacted	Net Change	FY 2010 Enacted
Tribal Government	400	3	403	27	430
Human Services	139	-2	137	0	137
Trust - Natural Resources Management	147	1	148	28	176
Trust - Real Estate Services	148	2	150	2	152
Public Safety and Justice	244	27	271	58	329
Community and Economic Development	39	4	44	1	45
Executive Direction and Administrative Services	240	20	260	8	268
BUREAU OF INDIAN EDUCATION	690	27	716	83	799
<b>TOTAL, Operation of Indian Programs</b>	<b>2,048</b>	<b>81</b>	<b>2,129</b>	<b>208</b>	<b>2,336</b>

## Tribal Government

(\$ in Millions)	FY 2008 Enacted	Net Change	FY 2009 Enacted	Net Change	FY 2010 Enacted
Aid to Tribal Government (TPA)	33	1	34	0	33
Consolidated Tribal Gov't Program (TPA)	68	1	69	3	72
Self Governance Compacts (TPA)	143	1	144	3	148
Contract Support (TPA)	147	0	147	19	166
Indian Self-Determination Fund (TPA)	0	0	0	2	2
New Tribes (TPA)	*	0	*	0	*
Tribal Government Program Oversight	8	1	8	1	9
<b>Total, Tribal Government</b>	<b>400</b>	<b>3</b>	<b>403</b>	<b>27</b>	<b>429</b>

\* less than 500K

## Human Services

(\$ in Millions)	FY 2008 Enacted	Net Change	FY 2009 Enacted	Net Change	FY 2010 Enacted
Social Services (TPA)	32	2	34	0	34
Welfare Assistance (TPA)	79	-4	75	0	75
Indian Child Welfare Act (TPA)	11		11	0	11
Housing Improvement Program (TPA)	14	0	14	-1	13
Human Services Tribal Design (TPA)	0		0	0	0
Human Services Program Oversight	4		4	0	4
<b>Total, Human Services</b>	<b>139</b>	<b>-2</b>	<b>137</b>	<b>0</b>	<b>137</b>

## TNR

(\$ in Millions)	FY 2008 Enacted	Net Change	FY 2009 Enacted	Net Change	FY 2010 Enacted
Natural Resources (UTB) (TPA)	4		4	0	4
Irrigation Operations and Maintenance	12		12	0	12
Rights Protection Implementation	20	-2	18	12	30
Tribal Management/Development Program	6	0	6	0	6
Endangered Species (UTB)	1		1	0	1

Integrated Resource Info Program (UTB)	1	1	2	0	2
Agriculture & Range (UTB)	24		24	5	29
Forestry (UTB)	43		43	1	44
Water Resources (partial UTB)	10		10	0	10
Fish, Wildlife and Parks (UTB)	6	1	7	4	11
Minerals and Mining (UTB)	11	1	12	7	19
Resource Management Program Oversight (UTB)	8	-1	7	0	7
<b>Total, Trust-Natural Resources Management</b>	<b>147</b>	<b>1</b>	<b>148</b>	<b>27</b>	<b>175</b>

#### TRE

(\$ in Millions)	FY 2008 Enacted	Net Change	FY 2009 Enacted	Net Change	FY 2010 Enacted
Trust Services (UTB) (TPA)	10	1	11	-1	10
Navajo-Hopi Settlement Program	1		1	0	1
Probate (UTB) (TPA)	9	4	13	0	13
Probate Backlog (UTB)	11	-3	7	0	7
Land Title and Records Offices (UTB)	14		15	0	15
Real Estate Services (UTB)	47	1	48	0	48
Land Records Improvement (UTB)	16		16	0	15
Environmental Quality (UTB)	11	1	12	3	15
Alaskan Native Programs	1		1	0	1
Rights Protection	12	-1	11	1	12
Trust - Real Estate Services Oversight (UTB)	15		15	0	15
<b>Total, Trust-Real Estate Services</b>	<b>148</b>	<b>2</b>	<b>150</b>	<b>2</b>	<b>152</b>

#### PS&J

(\$ in Millions)	FY 2008 Enacted	Net Change	FY 2009 Enacted	Net Change	FY 2010 Enacted
<b>Law Enforcement</b>	<b>228</b>	<b>27</b>	<b>255</b>	<b>48</b>	<b>303</b>
Criminal Investigations and Police Services	137	26	163	12	175
Detention/Corrections	64	1	65	6	70
Inspections/Internal Affairs	3		3	0	3
Law Enforcement Special Initiatives	14	1	15	2	17
Indian Police Academy	4		4	0	4
Tribal Justice Support	1		1	4	6
Law Enforcement Program Management	5	-1	4	4	8
Law Enforcement P.L.110-293	0	0	0	20	20
<b>Tribal Courts (TPA)</b>	<b>14</b>		<b>15</b>	<b>5</b>	<b>20</b>
<b>Tribal Courts P.L. 110-293</b>	<b>0</b>	<b>0</b>	<b>0</b>	<b>5</b>	<b>5</b>
<b>Fire Protection (TPA)</b>	<b>1</b>		<b>1</b>	<b>0</b>	<b>1</b>
<b>Total, Public Safety and Justice</b>	<b>244</b>	<b>27</b>	<b>271</b>	<b>58</b>	<b>329</b>

#### Econ. Dev.

(\$ in Millions)	FY 2008 Enacted	Net Change	FY 2009 Enacted	Net Change	FY 2010 Enacted
Job Placement and Training (TPA)	8	4	12	0	12
Economic Development (TPA)	5	-1	3	-1	2
Road Maintenance (TPA)	26		26	0	26
Community and Economic Development	0	0	0	1	1
Community Development	0		*		*
Community Development Oversight	1		2	1	3
<b>Total, Community and Economic Development</b>	<b>39</b>	<b>4</b>	<b>44</b>	<b>1</b>	<b>45</b>

Exec Dir

(\$ in Millions)	FY 2008 Enacted	Net Change	FY 2009 Enacted	Net Change	FY 2010 Enacted
Assistant Secretary Support	10	1	11	1	12
Executive Direction	18	1	19	2	21
Administrative Services	49	1	50	1	51
Safety and Risk Management	1		1	1	2
Information Resources Technology (UTB)	53	7	60	0	60
Human Capital Management	29	2	31	0	31
Facilities Management	24	1	25	-1	25
Intra-Governmental Payments	22	4	27	2	28
Rentals [GSA/Direct]	34	3	37	1	38
<b>Total, Executive Direction &amp; Admin Svcs</b>	<b>240</b>	<b>20</b>	<b>260</b>	<b>8</b>	<b>268</b>

#### BIE

(\$ in Millions)	FY 2008 Enacted	Net Change	FY 2009 Enacted	Net Change	FY 2010 Enacted
Elementary and Secondary (forward funded)	480	20	499	20	519
Elementary/Secondary Programs	75	1	75	2	77
Post Secondary Programs (forward funded)	0		0	50	50
Post Secondary Programs	112	4	115	12	127
Education Management	23	3	26	0	27
<b>TOTAL, BUREAU OF INDIAN EDUCATION</b>	<b>690</b>	<b>27</b>	<b>716</b>	<b>84</b>	<b>800</b>

#### Construction

(\$ in Millions)	FY 2008 Enacted	Net Change	FY 2009 Enacted	Net Change	FY 2010 Enacted
Education Construction	143	-14	129	-16	113
Public Safety and Justice Construction	14	25	39	25	64
Resources Management Construction	38	2	40	-2	38
Other Program Construction	8	1	9	0	9
<b>TOTAL, CONSTRUCTION</b>	<b>204</b>	<b>14</b>	<b>218</b>	<b>7</b>	<b>225</b>

#### Sett.

(\$ in Thousands)	FY 2008 Enacted	Net Change	FY 2009 Enacted	Net Change	FY 2010 Enacted
<b>Land Settlements:</b>		0		0	
White Earth Land Settlement Act (Adm.)	625	0	625	0	625
Hoopa-Yurok Settlement	250	0	250	0	250
<b>Water Settlements:</b>		0		0	
Pyramid Lake Water Rights Settlement	142	0	142	0	142
Nez Perce/Snake River	15,463	-253	15,210	253	15,463
Navajo Water Resources Development Trust Fund		0		6,000	6,000
Duck Valley Water Rights Settlement		0		12,000	12,000
<b>Miscellaneous Payments:</b>		0		0	
Rocky Boys O&M Trust Fund	7,500	-7,500	0	0	0
Puget Sound Regional Shellfish Settlement	7,000	-4,000	3,000	2,000	5,000
Pueblo of Isleta Settlement	2,400	0	2,400	0	2,400
Soboba Band of Luiseno Indians Settlement	0	0	0	5,500	5,500
Settlement Rounding Adjustment	158	-158	0	0	0
<b>TOTAL, SETTLEMENTS/MISC. PAYMENTS</b>	<b>33,538</b>	<b>-11,911</b>	<b>21,627</b>	<b>25,753</b>	<b>47,380</b>

#### Loans

(\$ in Thousands)	FY 2008 Enacted	Net Change	FY 2009 Enacted	Net Change	FY 2010 Enacted
Subsidies	5,489	1,097	6,586	0	6,586

Program Management	689	911	1,600	29	1,629
<b>TOTAL, INDIAN GUARANTEED LOAN PROGRAM</b>	<b>6,178</b>	<b>2,008</b>	<b>8,186</b>	<b>29</b>	<b>8,215</b>

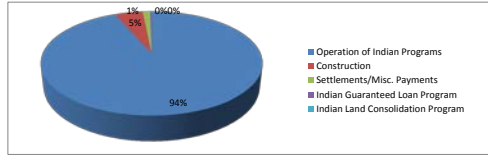
**Budget Distribution**

<b>(\$ in Millions)</b>	<b>FY 2008 Enacted</b>	<b>Net Change</b>	<b>FY 2009 Enacted</b>	<b>Net Change</b>	<b>FY 2010 Enacted</b>
Tribal Priority Allocations	774	12	786	43	829
Other Programs/Projects	1,111	69	1,180	154	1,334
Central Offices	118	1	119	9	128
Regional Offices	44	-1	43	2	45
Construction	204	14	218	7	225
Settlements	34	-12	22	25	47
Loans	6	2	8	0	8
Indian Land Consolidation				3	3
<b>Total</b>	<b>2,291</b>	<b>85</b>	<b>2,376</b>	<b>244</b>	<b>2,620</b>

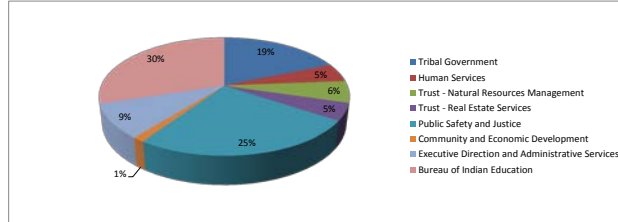


**OVERVIEW**

(\$ in Millions)	2010 Enacted	Net Changes	2011 Enacted	Net Changes	2012 Enacted
Operation of Indian Programs	2,336	-6	2,330	38	2,368
Construction	225	-15	210	-86	124
Settlements/Misc. Payments	47	-1	46	-14	33
Indian Guaranteed Loan Program	8	0	8	-1	7
Indian Land Consolidation Program	3	-3	0	0	0
<b>Total, Direct Appropriated Funds</b>	<b>2,620</b>	<b>-26</b>	<b>2,594</b>	<b>-63</b>	<b>2,531</b>

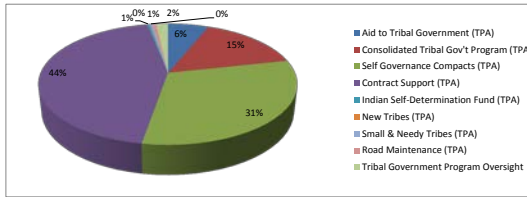


(\$ in Millions)	2010 Enacted	Net Changes	2011 Enacted	Net Changes	2012 Enacted
Tribal Government	429	56	486	11	496
Human Services	137	-0.4	137	-0.3	136
Trust - Natural Resources Management	173	-17	156	1	157
Trust - Real Estate Services	145	1	146	-19	127
Public Safety and Justice	471	169	640	28	668
Community and Economic Development	41	-23	37	-2	35
Executive Direction and Administrative Services	268	-10	258	-7	252
Bureau of Indian Education	800	-47	753	43	795
<b>Total, Operation of Indian Programs</b>	<b>2,464</b>	<b>129</b>	<b>2,612</b>	<b>55</b>	<b>2,667</b>



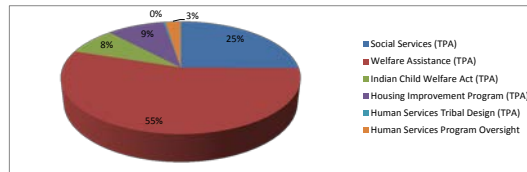
**TRIBAL GOVERNMENT**

(\$ in Millions)	2010 Enacted	Net Changes	2011 Enacted	Net Changes	2012 Enacted
Aid to Tribal Government (TPA)	33	-1	32	-1	30
Consolidated Tribal Gov't Program (TPA)	72	0	72	5	76
Self Governance Compacts (TPA)	148	1	149	6	155
Contract Support (TPA)	166	54	220	-0.4	219
Indian Self-Determination Fund (TPA)	2	0	2	0	2
New Tribes (TPA)	*	0.3	0	0	0.3
Small & Needy Tribes (TPA)		0		2	2
Road Maintenance (TPA)		3	3	-0.1	3
Tribal Government Program Oversight	9	0	9	0	9
<b>Total, Tribal Government</b>	<b>429</b>	<b>56</b>	<b>486</b>	<b>11</b>	<b>496</b>



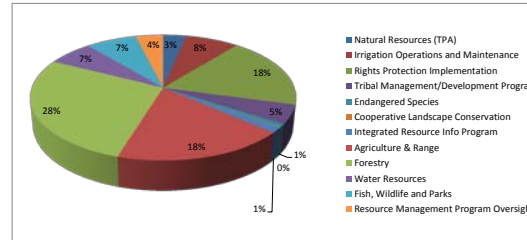
**HUMAN SERVICES**

(\$ in Millions)	2010 Enacted	Net Changes	2011 Enacted	Net Changes	2012 Enacted
Social Services (TPA)	34	0	34	0	34
Welfare Assistance (TPA)	75	0	75	0	75
Indian Child Welfare Act (TPA)	11	0	11	0	11
Housing Improvement Program (TPA)	13	0	13	0	13
Human Services Tribal Design (TPA)	0	0	0.4	0	0.4
Human Services Program Oversight	4	0	4	-1	3
<b>Total, Human Services</b>	<b>137</b>	<b>0</b>	<b>137</b>	<b>0</b>	<b>136</b>



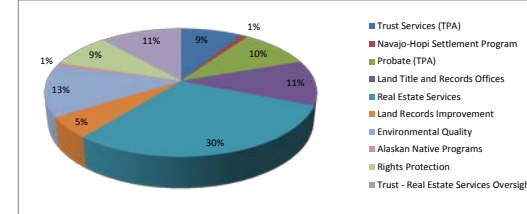
**TRUST - NATURAL RESOURCES MANAGEMENT**

(\$ in Millions)	2010 Enacted	Net Changes	2011 Enacted	Net Changes	2012 Enacted
Natural Resources (TPA)	4	1	5	1	5
Irrigation Operations and Maintenance	12	0	12	0	12
Rights Protection Implementation	30	-2	28	1	29
Tribal Management/Development Program	6	1	7	1	8
Endangered Species	1	0	1	0	1
Cooperative Landscape Conservation	0	0.4	0.4	-0.2	0.2
Integrated Resource Info Program	29	-27	2	0	2
Agriculture & Range	44	-15	29	0	29
Forestry	10	34	44	-0.1	44
Water Resources	11	-1	10	0	10
Fish, Wildlife and Parks	19	-8	11	0	11
Resource Management Program Oversight	7	0	7	-1	6
<b>Total, Trust-Natural Resources Management</b>	<b>173</b>	<b>-17</b>	<b>156</b>	<b>1</b>	<b>157</b>



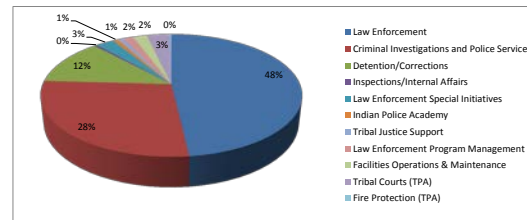
**TRUST - REAL ESTATE SERVICES**

(\$ in Millions)	2010 Enacted	Net Changes	2011 Enacted	Net Changes	2012 Enacted
Trust Services (TPA)	10	0	10	1	11
Navajo-Hopi Settlement Program	1	0	1	0	1
Probate (TPA)	13	-0.1	13	-0.3	13
Land Title and Records Offices	15	-0.1	14	-0.1	14
Real Estate Services	48	-0.3	48	-10	38
Land Records Improvement	15	-0.2	15	-8	7
Environmental Quality	15	0	15	2	17
Alaskan Native Programs	1	0	1	0	1
Rights Protection	12	0	12	-1	11
Trust - Real Estate Services Oversight	15	2	16	-2	15
<b>Total, Trust-Real Estate Services</b>	<b>145</b>	<b>1</b>	<b>146</b>	<b>-19</b>	<b>127</b>



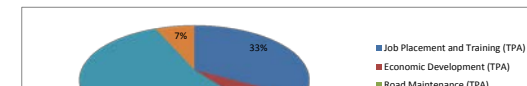
**PUBLIC SAFETY AND JUSTICE**

(\$ in Millions)	2010 Enacted	Net Changes	2011 Enacted	Net Changes	2012 Enacted
Law Enforcement	228	78	306	16	322
Criminal Investigations and Police Services	137	48	185	-0.3	185
Detention/Corrections	64	10	74	7	82
Inspections/Internal Affairs	3	0	3	-0.1	3
Law Enforcement Special Initiatives	14	4	18	-0.4	17
Indian Police Academy	4	1	5	-0.1	5
Tribal Justice Support	1	2	3	2	6
Law Enforcement Program Management	5	5	10	-0.3	10
Facilities Operations & Maintenance		6	6	8	14
Tribal Courts (TPA)	14	13	27	-4	23
Fire Protection (TPA)	1	0	1	-0.2	1
<b>Total, Public Safety and Justice</b>	<b>471</b>	<b>169</b>	<b>640</b>	<b>28</b>	<b>668</b>

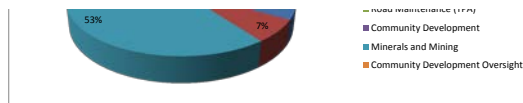


**COMMUNITY and ECONOMIC DEVELOPMENT**

(\$ in Millions)	2010 Enacted	Net Changes	2011 Enacted	Net Changes	2012 Enacted
Job Placement and Training (TPA)	12	0	12	0	12
Economic Development (TPA)	2	0	2	0	2

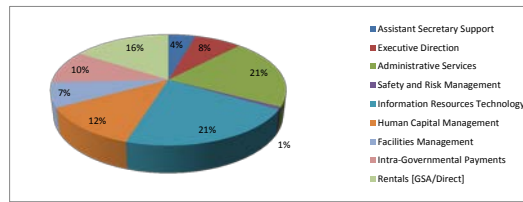


Road Maintenance (TPA)	26	-26			
Community Development	0	1	1	-1	
Minerals and Mining			18	0.2	19
Community Development Oversight	1	2	3	-1	2
<b>Total, Community and Economic Development</b>	<b>41</b>	<b>-23</b>	<b>37</b>	<b>-2</b>	<b>35</b>



**EXECUTIVE DIRECTION and ADMINISTRATIVE SERVICES**

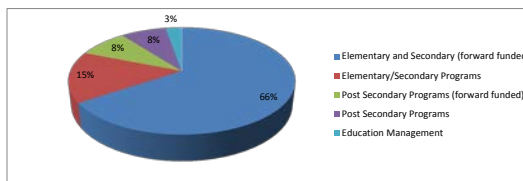
(\$ in Millions)	2010 Enacted	Net Changes	2011 Enacted	Net Changes	2012 Enacted
Assistant Secretary Support	12	-2	11	1	11
Executive Direction	21	-1	20	-1	19
Administrative Services	51	2	53	-1	52
Safety and Risk Management	2	0	2	0	2
Information Resources Technology	60	-2	57	-3	54
Human Capital Management	31	-1	31	-0.2	31
Facilities Management	25	-6	18	-0.5	18
Intra-Governmental Payments	28	0	28	-3	25
Rentals (GSA/Direct)	38	0	38	2	40
<b>Total, Executive Direction &amp; Administrative Svcs</b>	<b>268</b>	<b>-10</b>	<b>258</b>	<b>-7</b>	<b>252</b>



TOTAL, BUREAU OF INDIAN AFFAIRS 1,577,148 -4,890 1,572,258

**BUREAU OF INDIAN EDUCATION**

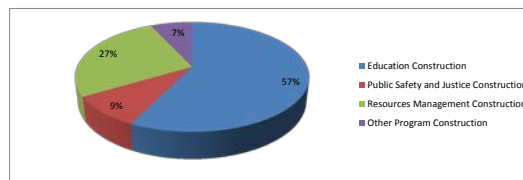
(\$ in Millions)	2010 Enacted	Net Changes	2011 Enacted	Net Changes	2012 Enacted
Elementary and Secondary (forward funded)	519	1	520	2	522
Elementary/Secondary Programs	77	0	77	46	123
Post Secondary Programs (forward funded)	50	14	64	3	67
Post Secondary Programs	127	-65	62	-0.2	61
Education Management	27	3	30	-8	22
<b>Total, Bureau of Indian Education</b>	<b>800</b>	<b>-47</b>	<b>753</b>	<b>43</b>	<b>795</b>



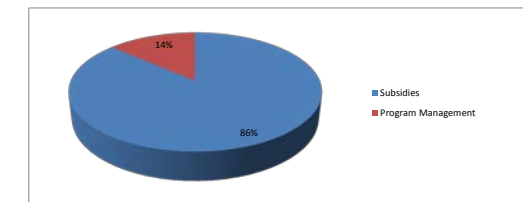
(\$ in Millions)	2010 Enacted	Net Changes	2011 Enacted	Net Changes	2012 Enacted
Indian Arts and Crafts Board					
<b>Total, Indian Arts and Crafts Board</b>					

**CONSTRUCTION**

(\$ in Millions)	2010 Enacted	Net Changes	2011 Enacted	Net Changes	2012 Enacted
Education Construction	113	28	141	-70	71
Public Safety and Justice Construction	64	-46	18	-7	11
Resources Management Construction	38	4	42	-9	33
Other Program Construction	9	0	9	-1	9
<b>Total, Construction</b>	<b>225</b>	<b>-15</b>	<b>210</b>	<b>-86</b>	<b>124</b>



(\$ in Thousands)	2010 Enacted	Net Changes	2011 Enacted	Net Changes	2012 Enacted
<b>Land Settlements:</b>					
White Earth Land Settlement Act (Adm.)	625	-1	624	0	624
Hoopa-Yurok Settlement	250	0	250	0	250
<b>Water Settlements:</b>					
Pyramid Lake Water Rights Settlement	142	0	142	0	142
Nez Perce/Snake River	15,463	-31	15,432	-5,997	9,435
Navajo Water Resources Development Trust Fund	6,000	-12	5,988	2	5,990
Navajo-Gallup Water Supply Project		0		4,381	4,381
Duck Valley Water Rights Settlement	12,000	-24	11,976	4	11,980
<b>Miscellaneous Payments:</b>					
Puget Sound Regional Shellfish Settlement	5,000	1,487	6,487	-6,487	
Soboba Band of Luiseno Indians Settlement	5,500	-12	5,488	-5,488	
<b>Total, Settlements/Misc. Payments</b>	<b>44,980</b>	<b>1,407</b>	<b>46,387</b>	<b>-13,585</b>	<b>32,802</b>



(\$ in Millions)	2010 Enacted	Net Changes	2011 Enacted	Net Changes	2012 Enacted
Subsidies	6,586	-13	6,573	-433	6,140
Program Management	1,629	4,944	1,626	-663	963
<b>Total, Indian Guaranteed Loan Program</b>	<b>8,215</b>	<b>4,931</b>	<b>8,199</b>	<b>-1,096</b>	<b>7,103</b>

**Budget Distribution**

(\$ in Millions)	2010 Enacted	Net Changes	2011 Enacted	Net Changes	2012 Enacted
Tribal Priority Allocations	774	110	884	7	891
Other Programs/Projects	1,111	162	1,273	53	1,326
Central Offices	118	11	129	-23	106
Regional Offices	44	0	44	1	45
Construction	204	6	210	-86	124
Settlements	34	12	46	-13	33
Loans	6	2	8	-1	7
Indian Land Consolidation			0	0	0
<b>Total</b>	<b>2,291</b>	<b>303</b>	<b>2,594</b>	<b>-62</b>	<b>2,532</b>

