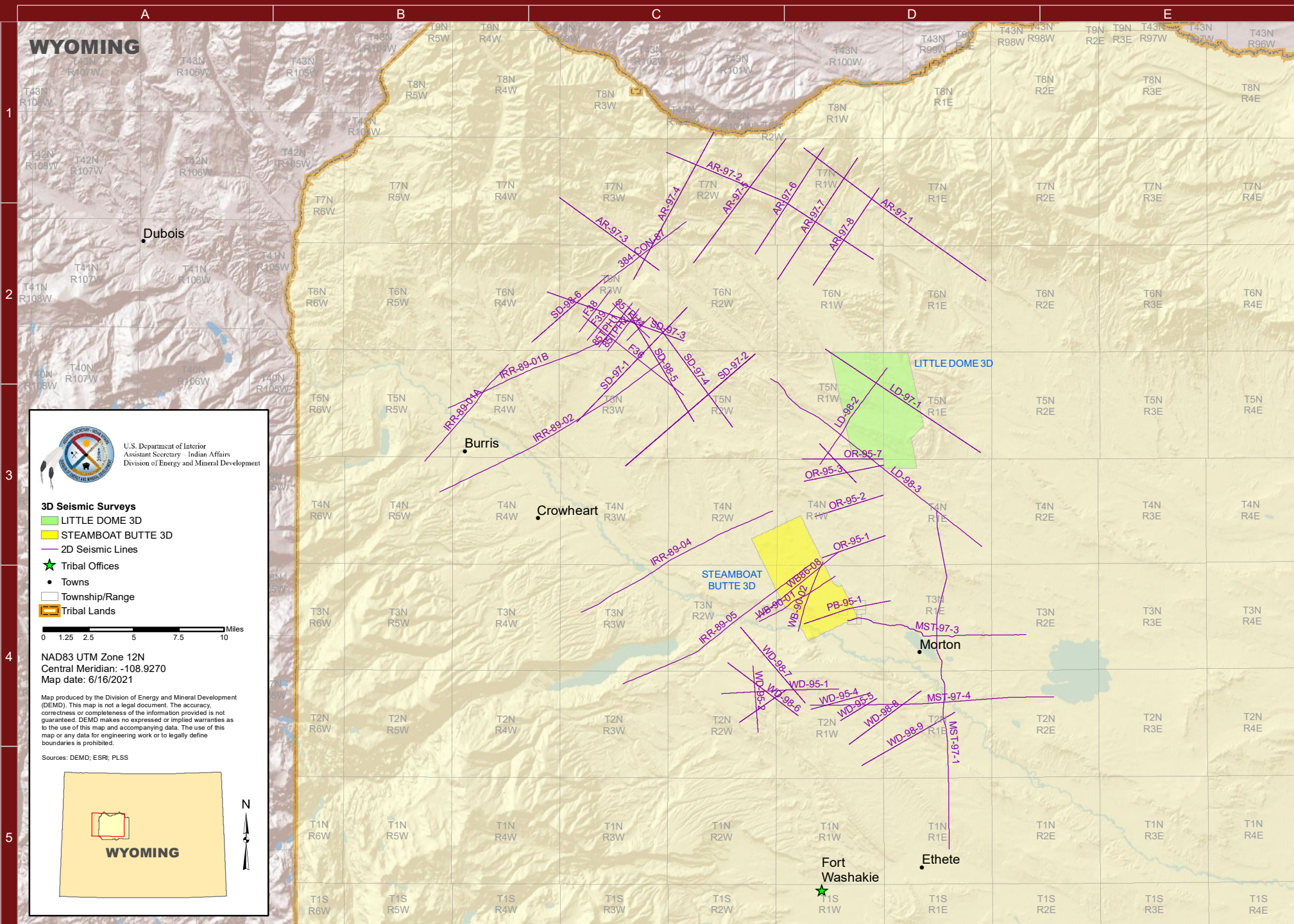


# WIND RIVER RESERVATION - WEST

NORTHERN ARAPAHO AND EASTERN SHOSHONE TRIBE



# WIND RIVER RESERVATION - WEST

NORTHERN ARAPAHO AND EASTERN SHOSHONE TRIBE

## 2D SEISMIC LINES

NAME	PROD	MILES	LOC	SHOT
384-CON-87	F	5.74	C2	
85TPH1	S	3.11	C2	
85TPH2	S	2.99	C2	
85TPH3	S	1.86	C2	
85TPH4	S	2.84	C2	
85TPH5	S	1.53	C2	
AR-97-1	F, S, M	12.59	D1	1997
AR-97-2	F, S, M	13.00	C1	1997
AR-97-3	F, S, M	6.92	C1	1997
AR-97-4	F, S, M	9.41	C2	1997
AR-97-5	F, S, M	8.67	C2	1997
AR-97-6	F, S, M	7.08	C2	1997
AR-97-7	F, S, M	8.17	C2	1997
AR-97-8	F, S, M	6.58	D2	1997
F36	F	7.15	C2	1984
F38	F	2.91	C2	1984
F39	F	2.71	C2	1984
IRR-89-01A	S	7.17	B3	1989
IRR-89-01B	S	9.60	B3	1989
IRR-89-02	S	14.57	B3	1989
IRR-89-04	S	12.09	C4	1989
IRR-89-05	S	12.50	C4	1989
LD-97-1	F, S, M	10.42	D2	1997
LD-98-2	F, S, M	6.58	D3	1998
LD-98-3	F, S, M	15.12	C2	1998
MST-97-1	F, S, M	19.28	D3	1997
MST-97-3	F, S, M	10.29	D4	1997
MST-97-4	F, S, M	13.52	D4	1997
OR-95-1	F, S, M	3.73	D3	1995
OR-95-2	F, S, M	3.97	D3	1995
OR-95-3	F, S, M	4.52	D3	1995
OR-95-7	F, S, M	4.50	D3	1995
OR-96-8	F, S, M	2.99	D3	1996
PB-95-1	F, S, M	4.99	D4	1995
SD-97-1	F, S, M	8.92	C3	1997
SD-97-2	F, S, M	19.15	C3	1997
SD-97-3	F, S, M	8.09	C2	1997
SD-97-4	F, S, M	7.58	C2	1997
SD-98-5	F, S, M	7.09	C2	1998
SD-98-6	F, S, M	5.67	C2	1998
WB86-08	F	5.89	C4	
WB-90-01	F, S	4.95	C4	1990
WB-90-02	F, S	4.14	D4	1990
WD-95-1	F, S, M	6.52	C4	1995
WD-95-2	F, S, M	3.78	C4	1995

## 3D SURVEYS

NAME	PROD	SQ MI	LOC	SHOT
LITTLE DOME 3D	F, M	25.30	D2	2010
STEAMBOAT BUTT	F	19.69	C3	1997

Note: Location is the north most or west most point

Products: D = DMO, F = FT, G = GATH, I = INTERP, P = PREMIG, M = MIG, S = STK

Data availability limited to tribal lands with tribal approval.

Prepared by:

**Assistant Secretary - Indian Affairs**  
**Division of Energy and Mineral Development**

13922 Denver West Parkway #200  
 Lakewood, CO 80401



Robert Anderson  
 Robert.Anderson@bia.gov

Paul Differding  
 Paul.Differding@bia.gov

Visit us at: [www.bia.gov/DEMD](http://www.bia.gov/DEMD)