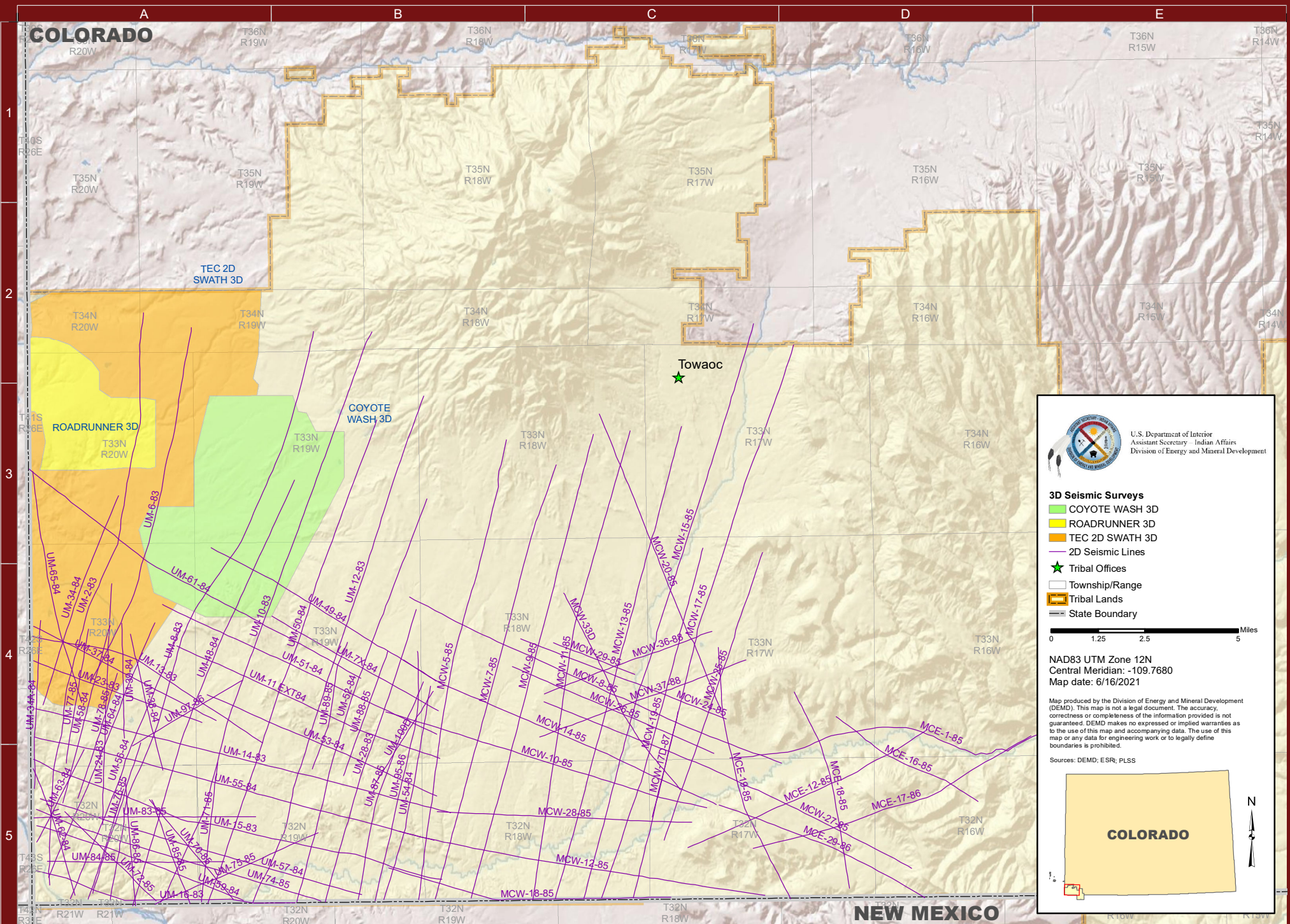



UTE MOUNTAIN UTE RESERVATION - C





U.S. Department of Interior
Assistant Secretary - Indian Affairs
Division of Energy and Mineral Development

3D Seismic Surveys

- COYOTE WASH 3D
- ROADRUNNER 3D
- TEC 2D SWATH 3D
- 2D Seismic Lines
- Tribal Offices
- Township/Range
- Tribal Lands
- State Boundary


★ Towaoc

0 1.25 2.5 5 Miles

NAD83 UTM Zone 12N
Central Meridian: -109.7680
Map date: 6/16/2021

Map produced by the Division of Energy and Mineral Development (DEM). This map is not a legal document. The accuracy, correctness or completeness of the information provided is not guaranteed. DEMD makes no expressed or implied warranties as to the use of this map and accompanying data. The use of this map or any data for engineering work or to legally define boundaries is prohibited.

Sources: DEMD; ESR; PLSS



COLORADO

UTE MOUNTAIN UTE RESERVATION - C

UTE MOUNTAIN UTE TRIBE

2D SEISMIC LINES

NAME	PROD	MILES	LOC	SHOT
MCE-1-85	F, S, M	11.56	D4	1985
MCE-12-85	F, S, M	7.19	D4	1985
MCE-16-85	F, S, M	4.48	D4	1985
MCE-17-86	F, S, M	8.12	D4	1986
MCE-18-85	F, S, M	5.56	D4	1985
MCE-19-85	F, S, M	7.17	C4	1985
MCE-29-86	F, S, M	6.08	C5	1986
MCW-5-85	F, S, M	12.70	B3	1985
MCW-7-85	F, S, M	12.20	C3	1985
MCW-8-85	F, S, M	10.94	B4	1984
MCW-9-85	F, S, M	12.97	C3	1985
MCW-10-85	F, S, M	8.98	B4	1984
MCW-11-85	F, S, M	12.98	C3	1985
MCW-12-85	F, S, M	9.95	B5	1985
MCW-13-85	F, S, M	13.22	C3	1985
MCW-14-85	F, S, M	9.27	B4	1985
MCW-15-85	F, S, M	16.23	C2	1985
MCW-17-85	F, S, M	15.60	D2	1985
MCW-17D-87	F, S, M	2.94	C4	1987
MCW-18-85	F, S, M	7.69	B5	1985
MCW-19-85	F, S, M	9.86	C3	1985
MCW-20-85	F, S, M	8.71	C3	1985
MCW-24-85	F, S, M	5.92	B4	1985
MCW-25-85	F, S, M	8.22	C3	1985
MCW-26-85	F, S, M	5.88	B4	1985
MCW-27-85	F, S, M	10.84	C4	1985
MCW-28-85	F, S, M	6.82	B5	1985
MCW-29-85	F, S, M	2.33	C4	1985
MCW-33D	F, S, M	6.21	C4	1987
MCW-36-88	F, S, M	4.81	C4	1988
MCW-37-88	F, S, M	5.92	C4	1988
UM-2-83	F	15.85	A2	1983
UM-6-83	F	10.07	A2	1983
UM-8-83	F, S, M	16.48	B2	1983
UM-10-83	F, S, M	16.48	B2	1983
UM-11 EXT84	F, S, M	7.69	A4	1984
UM-12-83	F, S, M	14.47	B3	1983
UM-13-83	F, S, M	6.92	A4	1983
UM-14-83	F, S, M	11.47	A4	1983
UM-15-83	F, S, M	11.47	A4	1983
UM-16-83	F, S, M	7.10	A5	1983
UM-23-83	F	4.82	A4	1983
UM-24-83	F, S, M	6.54	A4	1983
UM-28-83	F, S, M	8.29	B4	1983
UM-34-84	F	6.02	A3	1984

NAME	PROD	MILES	LOC	SHOT
UM-34A-84	F	4.56	A4	1984
UM-37-84	F, S, M	5.52	A4	1984
UM-38-84	F, S, M	3.78	A4	1984
UM-39-84	F	3.12	A4	1984
UM-48-84	F, S, M	12.34	B3	1984
UM-49-84	F, S, M	7.03	A3	1984
UM-50-84	F, S, M	13.84	B3	1984
UM-51-84	F, S, M	8.15	A4	1984
UM-52-84	F, S, M	11.47	B3	1984
UM-53-84	F, S, M	6.73	A4	1984
UM-54-84	F, S, M	5.92	B4	1984
UM-55-84	F, S, M	11.08	A4	1984
UM-56-84	F, S, M	7.96	A4	1984
UM-57-84	F, S, M	8.99	A5	1984
UM-58-84	F, S, M	4.98	A4	1984
UM-59-84	F, S, M	5.90	A5	1984
UM-61-84	F, S, M	10.58	A3	1984
UM-62-84	F, S, M	3.62	A4	1984
UM-63-84	F, S, M	2.81	A4	1984
UM-64-84	F, S, M	7.46	A4	1984
UM-65-84	F	6.41	A3	1984
UM-70-85	F, S, M	3.52	A5	1985
UM-71-85	F, S, M	3.81	A4	1985
UM-72-85	F, S, M	3.44	A5	1985
UM-74-85	F, S, M	8.03	A5	1985
UM-75-85	F, S, M	4.78	A5	1985
UM-76-85	F, S, M	4.27	A4	1985
UM-77-85	F, S, M	3.69	A4	1985
UM-78-85	F, S, M	3.55	A4	1985
UM-7X-84	F, S, M	5.15	B4	1984
UM-83-85	F, S, M	5.94	A5	1985
UM-84-85	F, S, M	4.75	A5	1985
UM-85-85	F, S, M	2.99	A5	1985
UM-86-85	F, S, M	3.44	A5	1985
UM-87-85	F, S, M	6.18	B4	1985
UM-88-85	F, S, M	3.58	B4	1985
UM-89-85	F, S, M	3.57	B4	1985
UM-95-86	F	6.89	B4	1986
UM-97-86	F, S, M	3.46	A4	1985
UM-98D-87	F	3.14	A5	1987
UM-100D	F, S, M	3.12	B4	1987

3D SEISMIC SURVEYS

NAME	PROD	SQ MI	LOC	SHOT
COYOTE WASH 3D	F, S, M	22.26	A3	2004
ROADRUNNER 3D	F, S, M	8.74	A2	2004
TEC 2D SWATH 3D	F, S, M	56.80	A2	1991/2007

Note: Location is the north most or west most point

Products: D = DMO, F = FT, G = GATH, I = INTERP, P = PREMIG, M = MIG, S = STK

Data availability limited to tribal lands with tribal approval.

Prepared by:

Assistant Secretary - Indian Affairs
Division of Energy and Mineral Development

13922 Denver West Parkway #200
Lakewood, CO 80401



Robert Anderson
Robert.Anderson@bia.gov

Paul Differding
Paul.Differding@bia.gov

Visit us at: www.bia.gov/DEMD