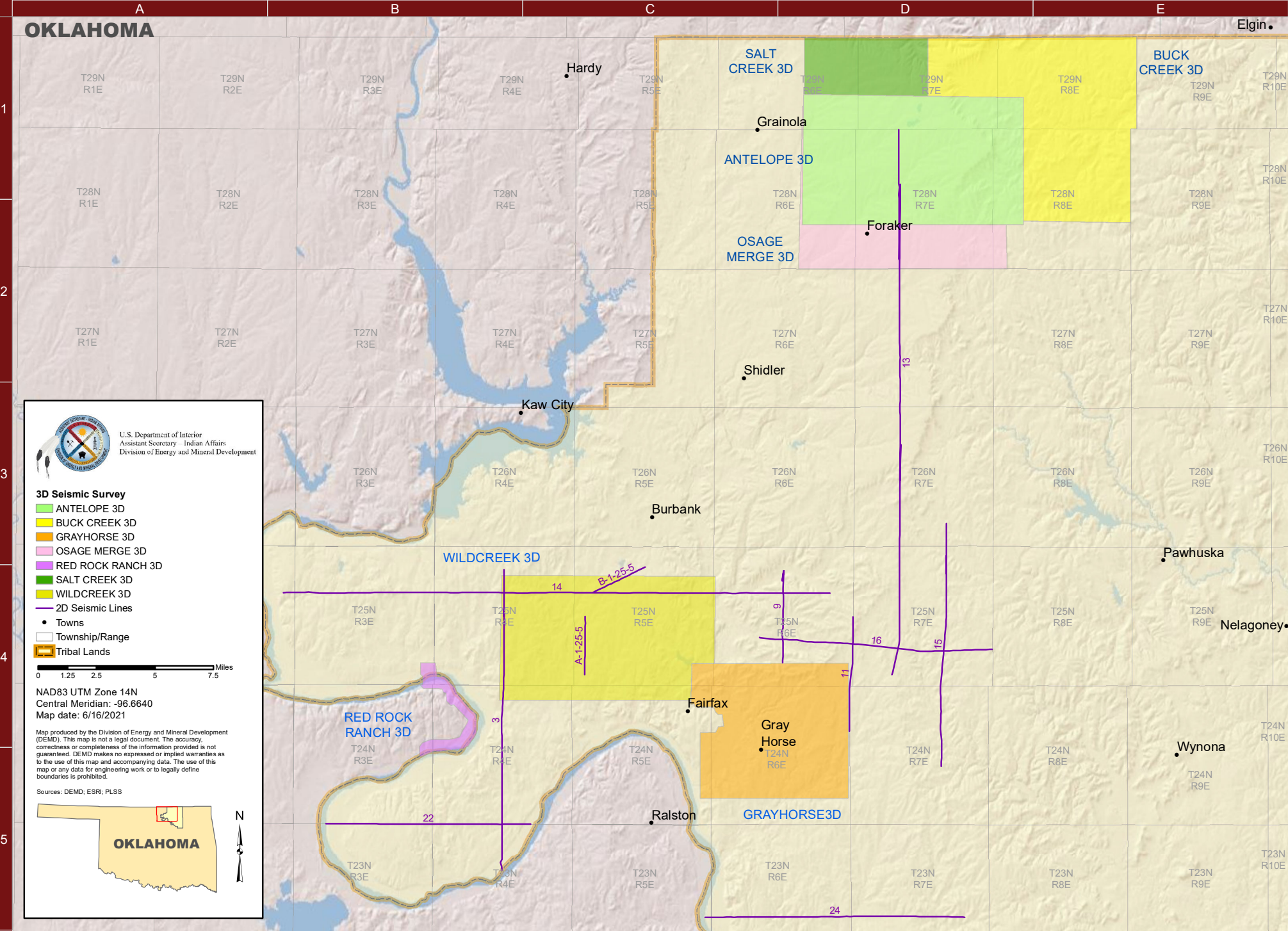


Seismic Data Basemap of the

OSAGE RESERVATION - B

OSAGE TRIBE



# OSAGE RESERVATION - B

OSAGE TRIBE

## 2D SEISMIC LINES

NAME	PROD	MILES	LOC	SHOT
3	S	13.58	B4	1986
9	S	4.89	D4	1986
11	S	4.94	D4	1986
13	S	33.15	D1	1986
14	S	23.43	B4	1986
15	S	12.03	D3	1986
16	S	10.01	C4	1986
22	S	8.79	B5	1986
24	S	11.13	C5	1986
A-1-25-5	F	2.51	C4	1991
B-1-25-5	F	2.50	C4	1991

## 3D SURVEYS

NAME	PROD	SQ MI	LOC	SHOT
ANTELOPE 3D	F, M	52.51	D1	1997
BUCK CREEK 3D	F, M	56.20	D1	
GRAYHORSE 3D	M	36.70	C4	1997
OSAGE MERGE 3D	P	116.77	D1	2014
RED ROCK RANCH	F, S, M, E	3.27	B4	6/2011
SALT CREEK 3D	F, S, M, E	20.93	D1	2012
WILDCREEK 3D	F, M	49.36	B4	1997

## UNMAPPED DATA

NAME	PROD	MILES	SHOT
93-1	S, M	5.75	1994
93-2	S, M	5.30	1994
93-3		-1.00	1993
93-4		-1.00	1993
93-5		-1.00	1993
WBE-99-OA-2208E-	F	4.51	1999
WBE-99-OA-2308E-	F	1.35	1999

Note: Location is the north most or west most point

Products: D = DMO, F = FT, G = GATH, I = INTERP, P= PREMIG, M = MIG, S = STK

Prepared by:

**Assistant Secretary - Indian Affairs**  
**Division of Energy and Mineral Development**

13922 Denver West Parkway #200  
Lakewood, CO 80401



Robert Anderson  
Robert.Anderson@bia.gov

Paul Differding  
Paul.Differding@bia.gov

*Data availability limited to tribal lands with tribal approval.*

Visit us at: [www.bia.gov/DEMD](http://www.bia.gov/DEMD)