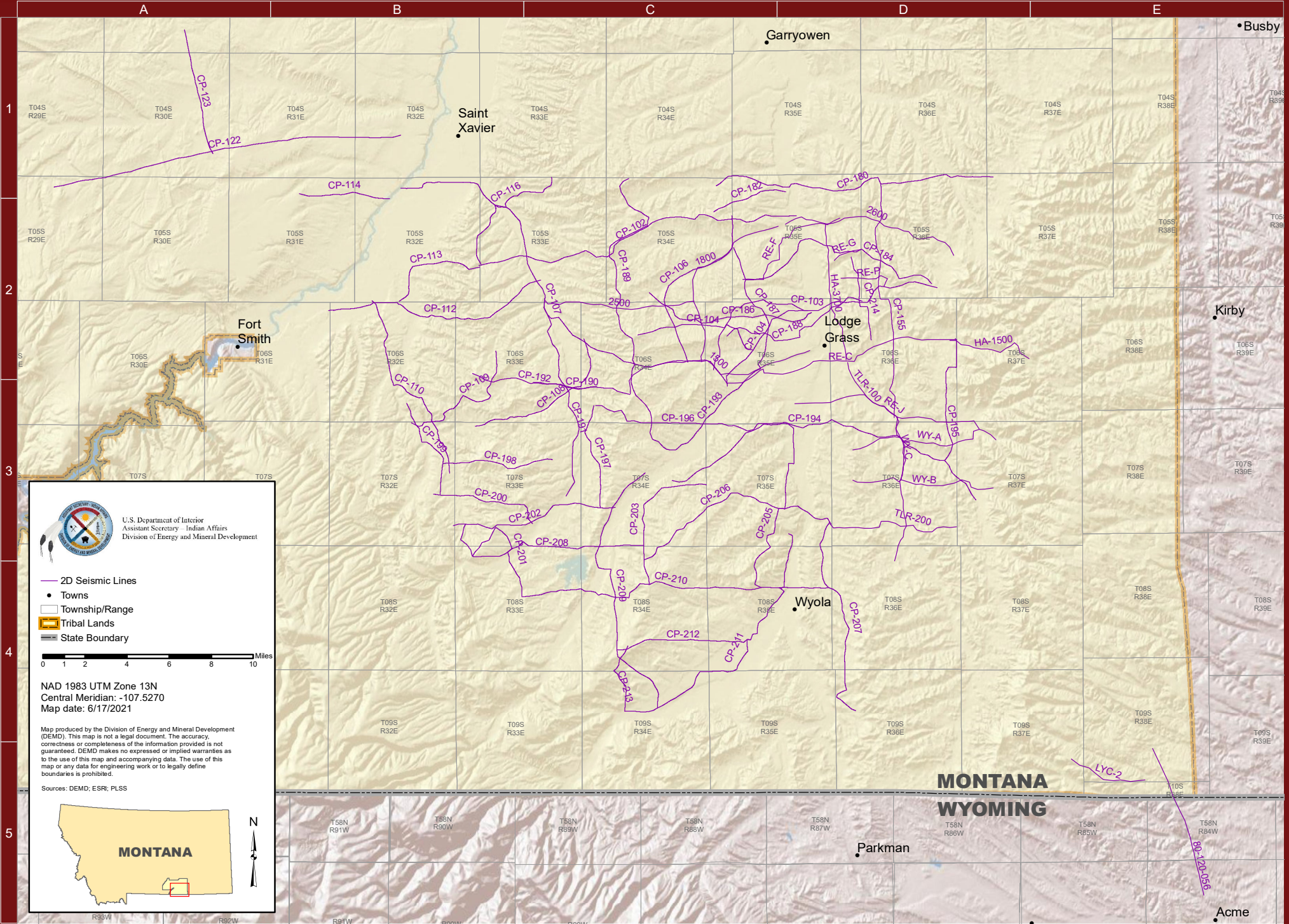



Seismic Data Basemap of the CROW RESERVATION - SOUTH

CROW NATION




U.S. Department of Interior
Assistant Secretary - Indian Affairs
Division of Energy and Mineral Development


- 2D Seismic Lines
- Towns
- Township/Range
- ▭ Tribal Lands
- ▬ State Boundary

0 1 2 4 6 8 10 Miles

NAD 1983 UTM Zone 13N
Central Meridian: -107.5270
Map date: 6/17/2021

Map produced by the Division of Energy and Mineral Development (DEMD). This map is not a legal document. The accuracy, correctness or completeness of the information provided is not guaranteed. DEMD makes no expressed or implied warranties as to the use of this map and accompanying data. The use of this map or any data for engineering work or to legally define boundaries is prohibited.

Sources: DEMD; ESRI; PLSS


MONTANA

N

CROW RESERVATION - SOUTH

CROW NATION

2D SEISMIC LINES

NAME	PROD	MILES	LOC	SHOT
CP-205	S, M	9.43	D3	1954
80-120-056	F, S, M	7.55	E5	1980
1500	F, S	10.12	C2	1953
1800	F, S	9.23	C2	1953
2500	F, S	7.27	C2	1953
2600	F, S	8.96	D2	1953
CP-102	S, M	16.46	B2	2015
CP-103	S, M	13.86	C2	2015
CP-104	S, M	5.86	C2	2015
CP-104	S, M	6.35	C2	2015
CP-106	S, M	9.10	C2	2015
CP-107	S, M	21.50	B1	2015
CP-108	S, M	8.11	B3	2015
CP-109	S, M	7.19	B3	2015
CP-110	S, M	10.00	B2	2015
CP-112	S, M	11.16	B2	2015
CP-113	S, M	5.27	B2	2015
CP-114	S, M	4.38	B1	2015
CP-116	S, M	7.79	C1	2015
CP-155	S, M	11.98	D1	2015
CP-122	S	16.79	A1	
CP-180	S, M	14.06	C1	
CP-182	S, M	3.68	C2	1955
CP-184	S	10.85	C2	
CP-186	S, M	8.58	C2	
CP-187	S, M	6.55	C2	
CP-188	S, M	7.83	C2	
CP-189	S	16.47	C1	
CP-190	S, M	4.74	C3	1953
CP-191	S, M	10.41	C2	1953
CP-192	S, M	6.09	B2	
CP-193	S	5.99	C3	
CP-194	S	14.71	C3	
CP-195	S	8.94	D2	
CP-196	S, M	9.82	C3	1954
CP-197	S, M	5.24	C3	1954
CP-198	S, M	5.41	B3	
CP-199	S, M	5.16	B3	1954
CP-200	S, M	5.46	B3	
CP-201	S, M	5.77	B3	1954
CP-202	S, M	8.22	B3	1954
CP-203	S, M	7.24	C3	1954
CP-206	S, M	10.81	C3	1955
CP-207	S, M	12.90	D3	1955
CP-208	S, M	10.29	B3	1952

NAME	PROD	MILES	LOC	SHOT
CP-209	S, M	13.70	C3	1954
CP-211	S, M	14.15	D3	1955
CP-210	S, M	10.82	B4	1955
CP-213	S, M	3.57	C4	1954
CP-212	S, M	6.10	C4	1954
CP-214	S, M	11.23	D2	1955
HA-1500	S, M	4.44	D2	
HA-3700	S, M	6.83	D2	
LYC-2	F, S	3.83	E5	1982
RE-C	S, M	11.87	C3	
RE-F	S, M	6.58	C2	
RE-G	S, M	1.40	D2	
RE-J	S, M	9.53	D3	
RE-P	S, M	2.71	D2	
TLR-100	S, M	11.06	D2	
TLR-200	S, M	6.62	D3	
WY-A	S, M	7.67	D3	
WY-B	S, M	7.16	D3	
WY-C	S, M	3.16	D3	

Note: Location is the north most or west most point

Products: D = DMO, F = FT, G = GATH, I = INTERP, P = PREMIG, M = MIG, S = STK

Data availability limited to tribal lands with tribal approval.

Prepared by:

Assistant Secretary - Indian Affairs
Division of Energy and Mineral Development

13922 Denver West Parkway #200
Lakewood, CO 80401



Robert Anderson
Robert.Anderson@bia.gov

Paul Differding
Paul.Differding@bia.gov

Visit us at: www.bia.gov/DEMD