

CONSULTATION PROTOCOL

- Please mute your phones.
- To conserve bandwidth during this presentation, please turn off your video.
- The moderator will call on you for questions and comments. Please state your full name and Tribal/organizational affiliation when called upon.
- All participants will be placed on mute while the presentation is being provided.
- A copy of the presentation may be found on the COVID-19 School Reopening webpage, <https://www.bia.gov/covid-19/school-reopening>
- Comments typed in the chat box need to be to “everyone.” Please do not send private comments because they may not be recorded by the moderator and court reporter.
- If time allows, we will address comments in the chat box. Please put your name and Tribal/organizational affiliation in the chat box.



TRIBAL CONSULTATION ON BIE DRAFT SCHOOL REOPENING PLAN

BUREAU OF INDIAN EDUCATION (BIE)

Welcome and Introductions

- Mark Cruz, Deputy Assistant Secretary for Policy and Economic Development – Indian Affairs
- Tony L. Dearman, BIE Director

Presenters

- Dr. Tamarah Pfeiffer, BIE Chief Academic Officer
- Clint J. Bowers, BIE Chief of Staff

PURPOSE OF CONSULTATION

- The BIE is conducting consultation to obtain oral and written comments on the draft BIE School Reopening Plan (Plan) for BIE-Operated Schools and recommendations for Tribally Controlled Schools for school year 2020-2021 to strengthen BIE support to its schools and local staff.
- Consultation is intended to ensure BIE is meeting the needs of its students, schools, and Tribal communities to provide a safe environment for the continuation of education of the students in response to the COVID-19 pandemic and following guidance issued by the Centers for Disease Control and Prevention (CDC).
- Due to the COVID-19 pandemic and the approaching start of the 2020-2021 school year, BIE provided an expedited notification period of 15 days instead of the usual 30-day notification period. The same 15-day time period will be used to receive formal comments post consultation no later than 11:59pm EST on July 25, 2020.

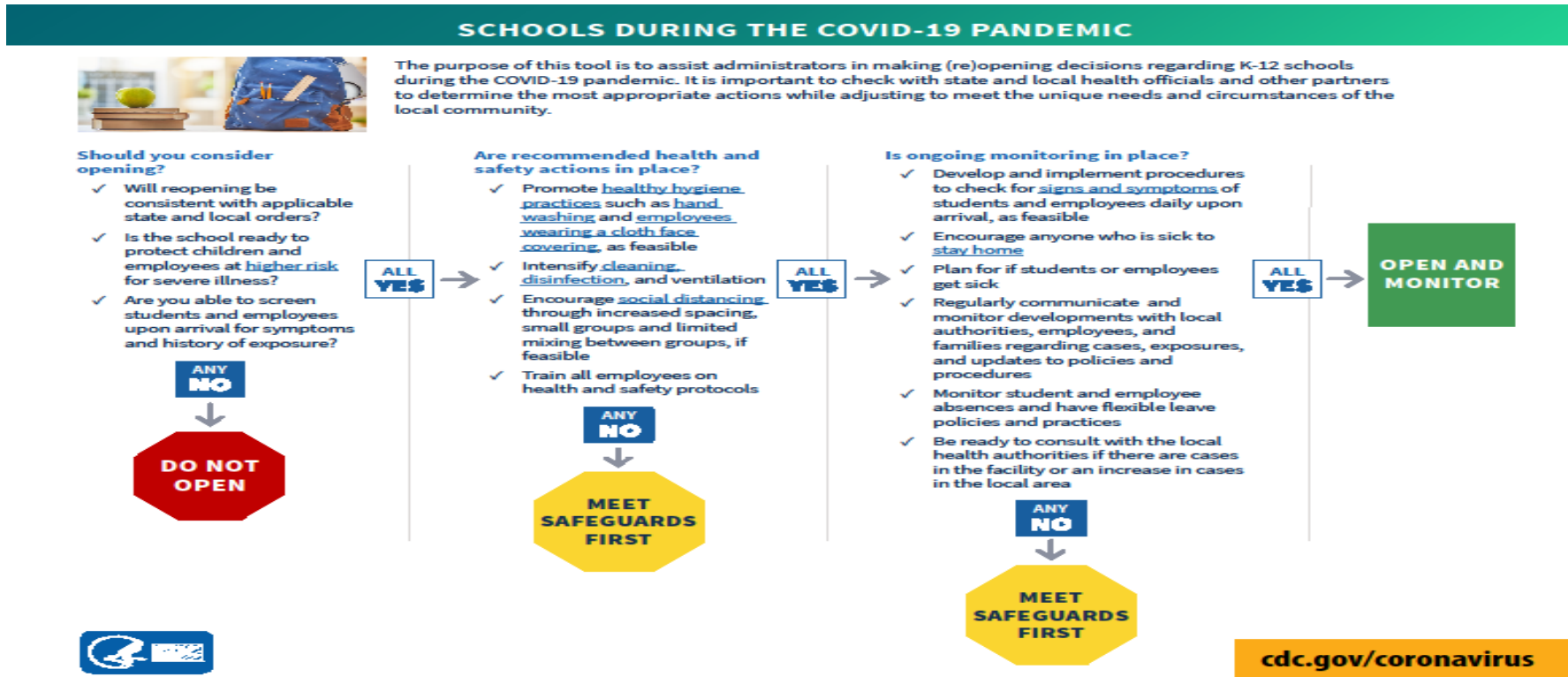
OVERVIEW OF PLAN

- BIE Draft School Reopening Plan: <https://www.bia.gov/covid-19/school-reopening>
- The Plan is a high-level **guidance** document intended to support schools while allowing for local flexibility for school leaders to coordinate with their local, state, Tribal and public health officials.
- The Plan will:
 - Provide reopening support to BIE-Operated Schools for developing individual school site reopening plans with adequate time before school year 2020-2021.
 - Provide reopening guidance to BIE-Funded Schools, including Tribally Controlled Schools, who may use the Plan's recommendations to support their individual school site reopening plans.
 - Serve as structural guidance for formal government-to-government Tribal consultation as well as separate engagement events with pertinent union organizations, such as the Federation of Indian Service Employees (FISE), and national organizations like the National Indian Education Association (NIEA).

LOCAL REOPENING PLAN IMPLEMENTATION

- School administrators are responsible for the development of their individual reopening plans for school year 2020-2021 with approval from the respective BIE Education Program Administrator (EPA).
- School administrators should use the components and recommendations outlined in this Plan to develop their local reopening plans.
- EPAs hold the authority to reopen and/or close school sites but the decision should be made in consultation with the respective BIE Associate Deputy Directors (ADD), school leadership, Tribal leadership, local Public Health Officials and Local Incident Commands, if applicable.

CDC DECISION TREE FOR REOPENING SCHOOLS



PLAN TOPIC AREAS

- The Plan is divided into sections or topic areas, including:
 - Guidelines for school reopening;
 - Considerations for teachers and staff;
 - School building mitigation and cleaning;
 - Health screening; and
 - Social distancing and other safety protocols.
- The Plan is intended to support back-to-school planning in BIE-Operated Schools and provide guidance for Tribally Controlled Schools as it incorporates best practices recommended by the CDC Decision Tree for Reopening Schools.

GUIDELINES FOR SCHOOL REOPENING

- Any action taken to reopen a school should be done in coordination with a school's respective BIE EPA and should use guidance from pertinent local, state, and Tribal officials as well as local public health officials.
- In keeping with CDC guidance, school administrators should consider state, Tribal, local emergency orders, level of community transmission, the ability to provide personal protective equipment (PPE) to staff and students, and other preventative measures for staff and students.
- Where states are open - but local Indian Tribes served by the school requests a school site stay closed - school administrators should consult with local Indian Tribes and make a local determination.
- The decision to reopen a school should generally be made when local infection rates have slowed significantly and other parts of the local economy have reopened. This should be coordinated with the respective EPA and ADD for approval.
- School reopening should be informed by CDC School Decision Tree (Slide 5) and additional CDC guidance.

CONSIDERATIONS FOR LOCAL SCHOOL REOPENING PLANS

- What criteria will be used to determine how and when a school brings students, teachers, and staff back to campus?
- How do we ensure reopening is not done too early?
- What coordination needs to occur between the school and community when developing a reopening plan?
- How can you work with respective EPAs to assist with forming reopening teams to develop local school reopening plans?
- Do you have protocols in place if the schools must close again due to infection?

CONSIDERATIONS FOR TEACHERS AND STAFF

- Which employees will be able or allowed to work from the school?
- What safety protocols will be in place and how will employees be trained in safety protocols, and how will they be enforced?
- Which employees will be allowed or required to work from their homes?
- Is full-time onsite instruction being provided or a hybrid model utilizing distance learning?
- What technology and access to connectivity will be available to staff to continue productivity if schools are providing distance learning?
- How will the school provide teachers and staff training for use of new learning platforms or resources?

CONSIDERATIONS FOR SCHOOL BUILDING MITIGATION AND CLEANING

- How will schools implement and review daily protocols to ensure a safe and clean environment?
- How will schools ensure buildings are being cleaned throughout the day to reduce exposure?
- Who will provide training to staff and who will order cleaning and PPE supplies?
- Will the school install physical barriers to promote and practice social distancing? When will they be installed?

CONSIDERATIONS FOR HEALTH SCREENING

- How will schools educate parents in the continuum of health screening so children are screened prior to going to school or boarding a bus?
- What training will be provided for staff to follow CDC recommended screening guidelines?
- How will the regular screening of students, staff and others be provided to ensure people are not exhibiting signs of illness?
- How will school leaders use approved protocols and determine how and where screening takes place?
- What steps will be taken to reduce risk and isolate individuals with symptoms in a compassionate manner and in a safe environment?

CONSIDERATIONS FOR SOCIAL DISTANCING AND OTHER SAFETY PROTOCOLS

- Staff members and students should exercise social distancing to the extent practicable in an indoor structured environment.
- Implement social distancing, hand washing and other safety protocols within a school facility to mitigate spread.
- Provide appropriate social distancing for the teachers, principals and school-based staff who are in the high-risk category for COVID-19. Are masks required?
- Group students with staff for the purpose of instruction, meals, bus, physical education to diminish risk.
- Adjust student transportation to meet social distancing requirements.
- Should schools use outdoor space to help meet social distancing needs?

PLAN'S ADDITIONAL CONSIDERATIONS

- Transportation
- Vulnerable students, and staff
- Special Populations with IEP's and 504 plans
- School-based Health Services
- Residential Boarding Schools/Dormitories (additional consultation scheduled for July 14, 2020)
- Post-Secondary
 - Haskell Indian Nations University
 - Southwest Indian Polytechnic Institute
- Communications

BIE SCHOOL TASK FORCE SUPPORT FOR REOPENING

- The BIE Task Force includes the Chief Academic Officer, ADDs and Division of Performance and Accountability representatives who will work with field staff to support schools regarding individual school reopening plans.
- Examples of Scenarios for Reopening
 - In-person/on-site Learning
 - Distance Learning
 - Blended In-person and Distance Learning

TASK FORCE REPRESENTATIVES

- **Hankie Ortiz**, Associate Deputy Director, Bureau Operated - Hankie.Ortiz@bie.edu
- **Dr. Cherie Poitra**, Acting Associate Deputy Director, Tribally Controlled - Cherie.Poitra@bie.edu
- **Emily Arviso**, Acting Associate Deputy Director, Navajo - Emily.Arviso@bie.edu
- **Margo DeLaune**, Acting Associate Deputy Director, Division of Performance and Accountability - Margo.Delaune@bie.edu
- **Dr. Tamarah Pfeiffer**, Chief Academic Officer - Tamarah.Pfeiffer@bie.edu

COMMENTS & RECOMMENDATIONS

- What are your recommendations to improve the Plan?
- Is there information that should be included that was omitted?
- How does the Plan support/conflict with your state's reopening guidance?

RESOURCES

- **COVID-19 Planning Considerations: Guidance for School Re-entry --**
<https://services.aap.org/en/pages/2019-novel-coronavirus-covid-19-infections/clinical-guidance/covid-19-planning-considerations-return-to-in-person-education-in-schools/>
- **COVID-19: Update on Progress Toward Safely Getting Back to Work and Back to School – Senate Committee on Health, Education, Labor and Pensions --**
<https://www.help.senate.gov/hearings/covid-19-update-on-progress-toward-safely-getting-back-to-work-and-back-to-school>
- **Supporting your child’s mental health as they return to school during COVID-19 --**
<https://www.unicef.org/coronavirus/supporting-your-childs-mental-health-during-covid-19-school-return>
- **Remarks by the President regarding Safely Reopening America’s Schools --**
<https://www.whitehouse.gov/briefings-statements/remarks-president-trump-safely-reopening-americas-schools/>

NEXT STEPS AND TIMELINES

- Oral comments received as part of the consultation sessions will be collected through a court reporter.
- Written comments must be received within 15 days on or before **July 25, 2020** or other date TBD upon approval to publish at **11:59 p.m. EST**.
- Send comments to consultation@bia.gov or Bureau of Indian Education, Juanita Mendoza, 1849 C Street NW MIB-3612, Washington, DC 20240.
- BIE will analyze all comments and determine how to utilize feedback to improve the current Plan to better support its schools.
- July 14, 2020 consultation session on reopening of Off Reservation Boarding Schools and Residential/Dorms:
 - <https://us02web.zoom.us/meeting/register/tZcodO2tqDkuHdCGcQTFK4cfsafKmUNRDd5P>
- For further information, please contact: Juanita Mendoza, Special Assistant to the Director, Bureau of Indian Education; phone (202) 208-3559 or email Juanita.Mendoza@bie.edu