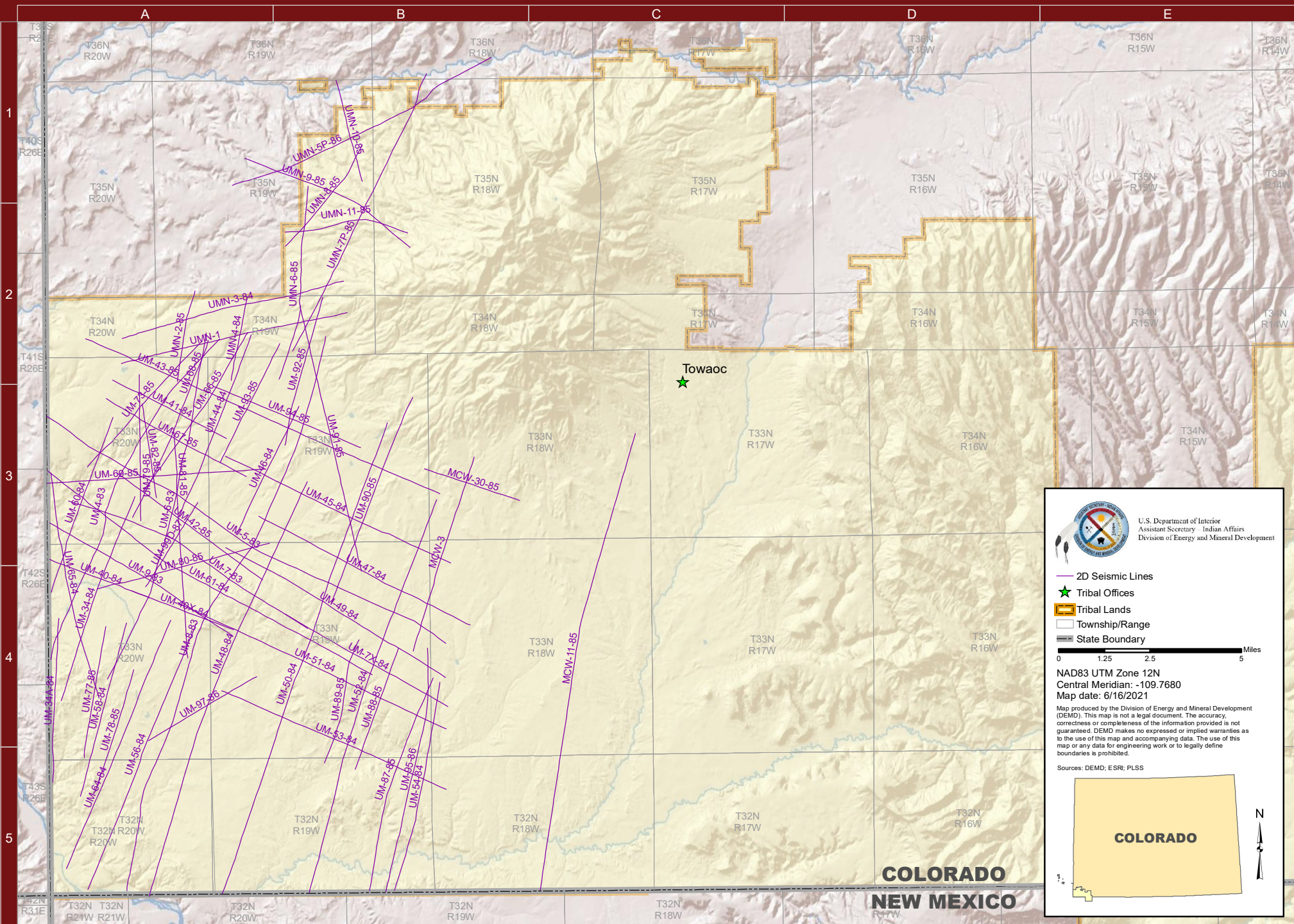





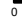


UTE MOUNTAIN UTE RESERVATION - B

U.S. Department of Interior
Assistant Secretary - Indian Affairs
Division of Energy and Mineral Development


-  2D Seismic Lines
-  Tribal Offices
-  Tribal Lands
-  Township/Range
-  State Boundary

0 1.25 2.5 5 Miles

NAD83 UTM Zone 12N
Central Meridian: -109.7680
Map date: 6/16/2021

Map produced by the Division of Energy and Mineral Development (DEMD). This map is not a legal document. The accuracy, correctness or completeness of the information provided is not guaranteed. DEMD makes no expressed or implied warranties as to the use of this map and accompanying data. The use of this map or any data for engineering work or to legally define boundaries is prohibited.

Sources: DEMD; ESR; PLSS



COLORADO

**COLORADO
NEW MEXICO**

2D SEISMIC LINES

NAME	PROD	MILES	LOC	SHOT
MCW-3	F, S, M	5.66	B3	1985
MCW-11-85	F, S, M	12.98	C3	1985
MCW-30-85	F, S, M	2.75	B3	1985
UM-4-83	F, S, M	10.21	A2	1983
UM-5-83	F, S, M	12.68	A3	1983
UM-6-83	F	10.07	A2	1983
UM-7-83	F, S, M	7.50	A3	1983
UM-7X-84	F, S, M	5.15	B4	1984
UM-8-83	F, S, M	16.48	B2	1983
UM-9-83	F	5.93	A3	1983
UM-34-84	F	6.02	A3	1984
UM-34A-84	F	4.56	A4	1984
UM-40-84	F	2.93	A3	1984
UM-40X-84	F	3.00	A4	1984
UM-41-84	F	3.53	A2	1984
UM-42-85	F	4.98	A3	1984
UM-43-85	F, S, M	10.62	A2	1984
UM-44-84	F	5.44	A2	1984
UM-45-84	F, S, M	6.85	A3	1984
UM-46-84	F	3.96	A3	1984
UM-47-84	F, S, M	6.54	A3	1984
UM-48-84	F, S, M	12.34	A3	1984
UM-49-84	F, S, M	7.03	A3	1984
UM-50-84	F, S, M	13.84	B3	1984
UM-51-84	F, S, M	8.15	A4	1984
UM-52-84	F, S, M	11.47	B3	1984
UM-53-84	F, S, M	6.73	A4	1984
UM-54-84	F, S, M	5.92	B4	1984
UM-56-84	F, S, M	7.96	A4	1984
UM-58-84	F, S, M	4.98	A4	1984
UM-60-84	F	5.15	A3	1984
UM-61-84	F, S, M	10.58	A3	1984
UM-64-84	F, S, M	7.46	A4	1984
UM-65-84	F	6.41	A3	1984
UM-66-85	F	5.25	A2	1985
UM-67-85	F	4.41	A3	1985
UM-68-85	F	5.34	A2	1985
UM-69-85	F	6.01	A3	1985
UM-73-85	F	4.67	A2	1985
UM-77-85	F, S, M	3.69	A4	1985
UM-78-85	F, S, M	3.55	A4	1985
UM-79-85	F	4.07	A2	1985
UM-80-85	F	4.89	A3	1985
UM-81-85	F	6.38	A3	1985
UM-82-85	F	2.64	A3	1985

NAME	PROD	MILES	LOC	SHOT
UM-87-85	F, S, M	6.18	B4	1985
UM-88-85	F, S, M	3.58	B4	1985
UM-89-85	F, S, M	3.57	B4	1985
UM-90-85	F, S, M	6.14	B3	1985
UM-91-85	F, S, M	7.62	B2	1985
UM-92-85	F, S, M	4.24	B2	1985
UM-93-85	F	3.69	A2	1985
UM-94-85	F, S, M	4.38	A2	1985
UM-95-86	F	6.89	B4	1986
UM-97-86	F, S, M	3.46	A4	1985
UM-99D-87	F	2.75	A3	1987
UMN-1	F, S, M	6.35	A2	1984
UMN-2-85	F	2.57	A2	1985
UMN-3-84	F, S, M	6.28	A2	1984
UMN-4-84	F	2.37	A2	1984
UMN-5P-86	F, S, M	7.98	A1	1986
UMN-6-85	F, S, M	5.47	B1	1985
UMN-7P-85	F, S, M	8.56	B1	1985
UMN-8-85	F, S, M	3.54	B1	1985
UMN-9-85	F, S, M	5.22	A1	1985
UMN-10-85	F, S, M	2.91	B1	1985
UMN-11-85	F, S, M	3.46	B2	1985

UNMAPPED DATA

NAME	PROD	MILES	SHOT
3	F	9.00	1973
39-WY-92	F, S	4.40	1992
8-25-70	F	18.87	1970
A861-D	SEC	8.25	1973
A-872	SEC	14.56	1973
AHC-82-WRB-60	F	9.89	1982

E. RIVERTON DOM

Note: Location is the north most or west most point

Products: D = DMO, F = FT, G = GATH, I = INTERP, P = PREMIG, M = MIG, S = STK

Prepared by:

Assistant Secretary - Indian Affairs
Division of Energy and Mineral Development

13922 Denver West Parkway #200
 Lakewood, CO 80401



Robert Anderson
 Robert.Anderson@bia.gov

Paul Differding
 Paul.Differding@bia.gov

Visit us at: www.bia.gov/DEMD

Data availability limited to tribal lands with tribal approval.